

Bellemave Twin Size Race Car Bed with Storage

Bellemave Twin Size Race Car Bed with Storage Instruction Manual

Model: Twin Size Race Car Bed with Storage (B0CD7YMR4)

1. IMPORTANT SAFETY INFORMATION

Please read and understand all instructions and safety warnings before assembling and using this product. Keep this manual for future reference.

- **Weight Capacity:** Do not exceed the maximum weight capacity of 250 lbs (113 kg). Exceeding this limit may result in injury or damage to the bed.
- **Moving the Bed:** Be cautious of the wheels when moving the bed. Ensure the bed is lifted or moved carefully to prevent damage or injury.
- **Assembly:** Ensure proper assembly to prevent instability. All bolts and screws must be securely tightened. Periodically check and re-tighten all connections.
- **Sharp Edges:** Be careful around any potential sharp edges during assembly and use.
- **Small Parts:** Keep all small parts and hardware out of reach of children during assembly to prevent choking hazards.
- **Mattress:** Use a mattress with a recommended thickness of 6 inches (15 cm) for optimal safety and fit.

2. PRODUCT OVERVIEW

The Bellemave Twin Size Race Car Bed with Storage is designed for children, featuring a unique race car shape and integrated storage. It provides a comfortable sleeping area with a sturdy wood platform frame.



Figure 2.1: Overall view of the Bellemave Twin Size Race Car Bed in dark blue with yellow accents.

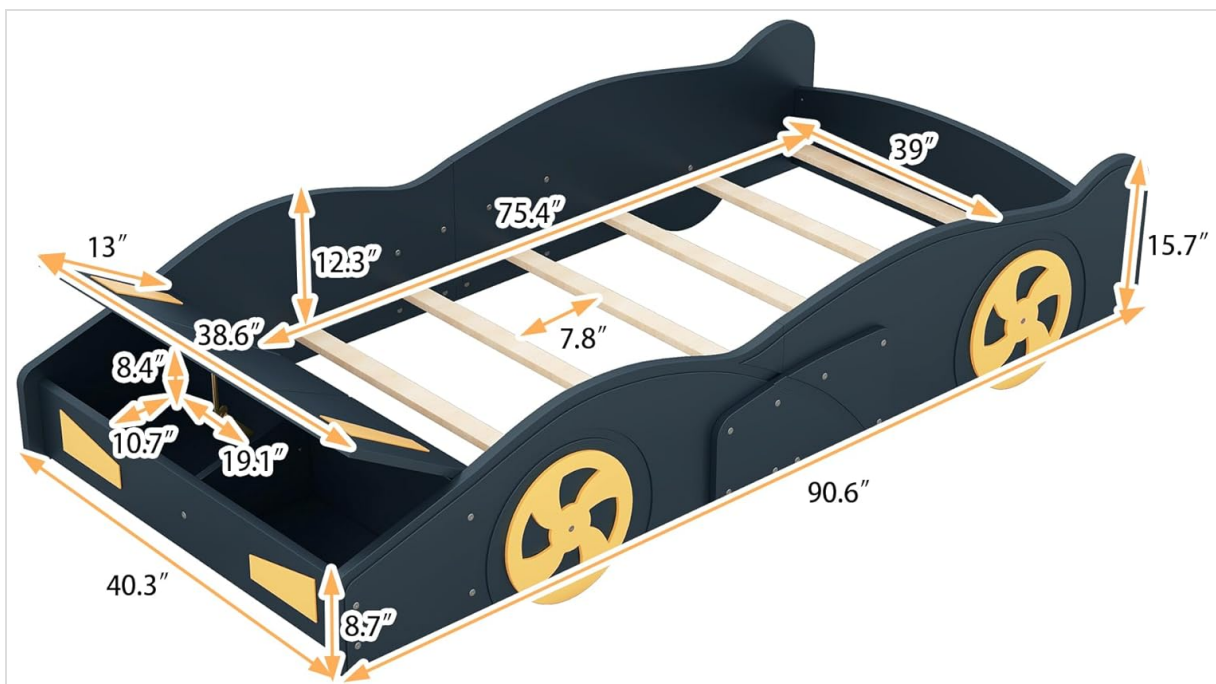


Figure 2.2: Detailed dimensions of the race car bed, showing length, width, and height measurements.

Key Features:

- **Sturdy Construction:** Crafted from solid pine wood and MDF for durability and high load capacity.
- **Race Car Design:** Appealing race car shape with yellow wheel decorations.
- **Integrated Storage:** The front section of the bed provides convenient storage space for clothes, bedding, or toys.
- **Comfortable Design:** Engineered for comfort and maximum safety with rails on both sides.
- **No Box Spring Required:** Wood slats provide direct mattress support, extending mattress life.

3. PACKAGE CONTENTS

Before beginning assembly, ensure all parts and hardware are present. Refer to the packing list included in your package for a complete inventory. Typical components include:

- Bed Frame Panels (Headboard, Footboard, Side Rails)
- Wood Slats
- Storage Compartment Components
- Decorative Wheels/Casters
- Assembly Hardware (Screws, Bolts, Washers, Allen Wrench)
- Instruction Manual

4. ASSEMBLY INSTRUCTIONS (SETUP)

Assembly is required for this product. It is recommended to have two adults for assembly. Please follow the step-by-step diagrams and instructions provided in the separate assembly guide included in your package. The general steps are outlined below:

Tools Required (Not Included):

- Phillips Head Screwdriver
- Hammer (optional, for dowels)

General Assembly Steps:

1. **Unpack and Identify:** Carefully unpack all components and hardware. Lay them out on a soft, clean surface to prevent scratches. Identify each part using the provided parts list.
2. **Assemble Main Frame:** Connect the headboard, footboard, and side rails according to the diagrams. Secure with the provided bolts and nuts. Do not fully tighten all fasteners until the bed is completely assembled.
3. **Install Bed Slats:** Place the wood slats across the bed frame. Ensure they are evenly spaced and secured to the side rails using the provided screws.
4. **Attach Decorative Elements:** Secure the decorative wheels and any other external design elements to the bed frame.
5. **Assemble Storage Compartment:** Construct the storage compartment at the front of the bed and integrate it into the main frame as per the instructions.
6. **Final Tightening:** Once all components are in place and aligned, fully tighten all bolts and screws.



Figure 4.1: View of the bed frame structure with wooden slats installed, prior to mattress placement.

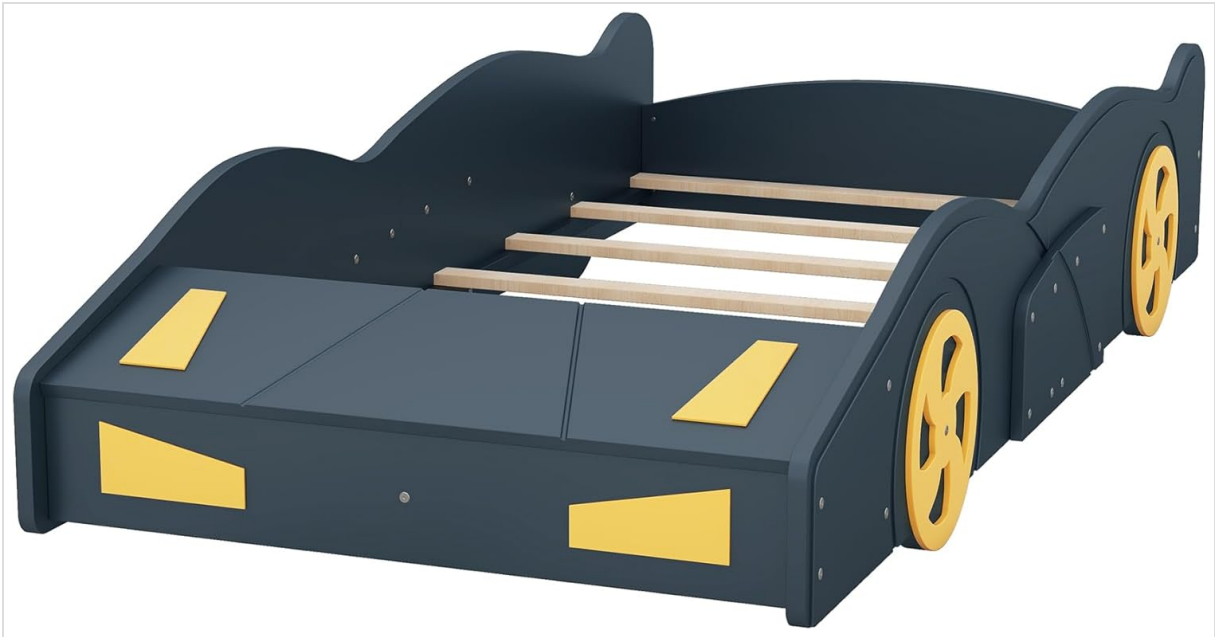


Figure 4.2: Front view of the race car bed, illustrating the integrated storage compartment in its closed position.

5. OPERATING INSTRUCTIONS

Once assembled, the Bellemave Race Car Bed is ready for use.

- **Mattress Placement:** Place a twin-size mattress (recommended thickness 6 inches) directly onto the wooden slats. No box spring is required.
- **Using Storage:** The front section of the bed features a storage compartment. Open the lid to access the space for storing items like toys, books, or extra bedding. Ensure the lid is securely closed when not in use.
- **Weight Limit:** Adhere strictly to the 250 lbs (113 kg) weight capacity.



Figure 5.1: Front view of the race car bed, demonstrating the storage compartment in its open position.

6. MAINTENANCE AND CARE

Proper care will ensure the longevity and appearance of your Bellemave Race Car Bed.

- **Cleaning:** Wipe the bed frame with a soft, damp cloth. Avoid using harsh chemicals, abrasive cleaners, or polishes that may damage the finish.
- **Hardware Check:** Periodically check all bolts, screws, and connections to ensure they remain tight. Re-tighten as necessary to maintain stability and safety.
- **Avoid Excessive Moisture:** Protect the bed from prolonged exposure to moisture or direct sunlight, which can cause warping or fading.
- **Moving:** When moving the bed, lift it rather than dragging it to prevent damage to the frame or floor.

7. TROUBLESHOOTING

If you encounter any issues with your Bellemave Race Car Bed, refer to the following common troubleshooting tips:

- **Bed Feels Unstable/Wobbly:**
 - Ensure all assembly hardware (bolts, screws) are fully tightened.
 - Verify that all parts are correctly aligned according to the assembly instructions.
- **Squeaking Noises:**
 - Check and re-tighten all connections, especially where the slats meet the side rails.
 - Ensure the mattress is properly seated and not causing friction.
- **Storage Compartment Not Opening/Closing Smoothly:**
 - Check for any obstructions inside or around the compartment.
 - Ensure the compartment components were assembled correctly and are aligned.

If these steps do not resolve the issue, please contact customer support for further assistance.

8. SPECIFICATIONS

Feature	Specification
Product Dimensions (Overall)	90.6"L x 40.3"W x 15.7"H
Twin Bed Dimensions	75.4"L x 39"W
Total Height	15.7"
Number of Bed Slats	8 pcs
Recommended Mattress Thickness	6"
Overall Product Weight	107.5 lbs
Bed Weight Capacity	250 lbs
Material	Pine Wood + MDF
Included Components	Casters, Slat
Assembly Required	Yes

9. WARRANTY AND SUPPORT

For warranty information or if you require further assistance, please contact Bellemave customer support. Keep your purchase receipt and model information handy when contacting support.

You can visit the official Bellemave store for more information: [Bellemave Store on Amazon](#)