

[Manuals.plus](#) /

> [TYMO](#) /

> TYMO AIRHYPE Lite Ionic Hair Dryer User Manual

TYMO HC602 series

TYMO AIRHYPE Lite Ionic Hair Dryer User Manual

Model: HC602 series

INTRODUCTION

Thank you for choosing the TYMO AIRHYPE Lite Ionic Hair Dryer. This manual provides essential information for the safe and effective use, maintenance, and care of your new hair dryer. Please read all instructions carefully before use and retain this manual for future reference.



Image: The TYMO AIRHYPE Lite Ionic Hair Dryer in its sleek silver design.

IMPORTANT SAFETY INFORMATION

To reduce the risk of electric shock, burns, fire, or injury, always follow these basic safety precautions:

- Keep out of reach of children.
- Do not use the hair dryer while bathing or in a shower.
- Keep the power plug and cord away from heated surfaces.
- Always unplug the appliance immediately after use.
- Do not use with a voltage converter.

PRODUCT OVERVIEW

The TYMO AIRHYPE Lite features a compact design with intuitive controls for a personalized drying experience.



MILD SOUND, MAXIMUM CARE

Brushless motor minimizes noise to **69 dB**, providing a quieter drying experience for you and your loved ones.



Image: Close-up view of the hair dryer's handle, showing the power button and heat/speed adjustment controls.

Key Components:

- **Nozzle:** Directs airflow for precise styling.
- **Handle:** Ergonomically designed for comfortable grip.
- **Control Buttons:** For adjusting power, heat, and speed settings.
- **Air Filter:** Located at the rear, designed to prevent hair and debris from entering.

SETUP

Follow these steps to prepare your hair dryer for first use:

1. Remove the hair dryer from its packaging.
2. Plug the hair dryer into a standard power outlet. Ensure the outlet voltage matches the device's requirements (120V).
3. Attach desired nozzle (e.g., concentrator) by aligning it with the magnetic connection point on the front of the dryer.

STRONG AIRFLOW, GENTLE TOUCH

NTC overheat protection, no damage, no static

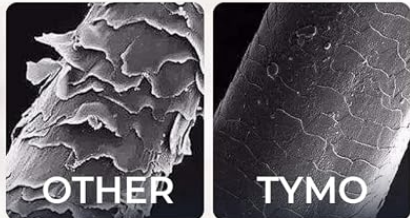


Image: The hair dryer with the concentrator nozzle attached, ready for use.

OPERATING INSTRUCTIONS

The TYMO AIRHYPE Lite offers multiple settings for optimal hair drying and styling.

1. **Power On:** Press the power button located on the handle.
2. **Select Settings:** Use the dedicated buttons to select your desired heat and speed settings. The dryer features 3 airspeeds (Gentle, Medium, Fast) and 4 stable heat settings (80°F/27°C, 140°F/60°C, 180°F/80°C, 210°F/100°C).
3. **Positioning:** Hold the hairdryer at least 6 inches (15 cm) away from your hair to prevent heat damage.
4. **Drying:** Direct the airflow at your hair, moving the dryer continuously to ensure even drying.

5. **Cool Shot:** Press the cool shot button for a burst of cool air to set your style.
6. **Power Off:** Turn off and unplug the hairdryer when you are finished using it.



Image: Diagram illustrating the various airspeed and heat settings available on the hair dryer.

Official Product Video:

Your browser does not support the video tag.

Video: A short demonstration video from TYMO US titled "Enjoy your happy morning!" showcasing the product in use.

KEY FEATURES

- **Powerful Faster Drying:** Equipped with a 110,000 RPM brushless high-speed motor and optimized high-volume airflow, the TYMO AIRHYPE Lite offers significantly faster drying results.



Image: An internal view illustrating the powerful 110,000 RPM motor and efficient airflow.

- **ThermaGlide Technology:** Ensures precise temperature control and even heat distribution, preventing hotspots and heat damage for all hair textures.



Image: Comparison of hair strands, highlighting the benefits of ThermoGlide technology in reducing damage.

- **Billion Level Negative Ions:** The integrated negative ion generator emits billions of negative ions, resulting in smoother, healthier hair with significantly reduced frizz.



Image: A woman showcasing hair with increased smoothness, shine, and volume due to negative ion technology.

- **Constant Heat Monitoring:** A built-in T-sensor monitors and adjusts temperature 100 times per second, ensuring consistent and safe heat levels to prevent over-drying.
- **Featherlight Compact Design:** Weighing just 0.8lb, this blow dryer is lightweight and compact, making it ideal for travel.

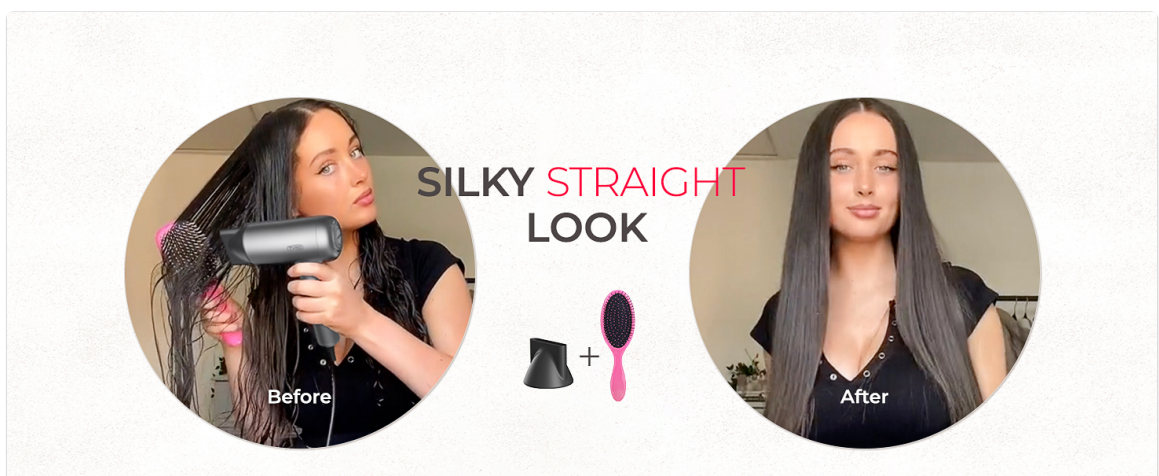


Image: The hair dryer positioned next to a smartphone for a visual comparison of its compact size.

- **Low Noise Operation:** The brushless motor minimizes noise to 69 dB, providing a quieter drying experience.



Image: A graphic demonstrating the reduced noise level of the hair dryer compared to typical household sounds.

MAINTENANCE

Regular maintenance ensures optimal performance and extends the lifespan of your hair dryer.

- **Cleaning the Air Filter:** The TYMO AIRHYPE Lite features a closed filter design to prevent hair and debris from being drawn in. Periodically check and clean the air filter to maintain optimal airflow. Gently remove any accumulated dust or lint.



Image: A visual representation of the hair dryer's closed filter design.

- **Exterior Cleaning:** Wipe the exterior of the hair dryer with a soft, damp cloth. Do not use abrasive cleaners or solvents.
- **Storage:** Store the hair dryer in a cool, dry place when not in use. Do not wrap the power cord tightly around the appliance, as this can damage the cord.

TROUBLESHOOTING

If you encounter any issues with your TYMO AIRHYPE Lite, refer to the following common solutions:

- **No Power:** Ensure the power cord is securely plugged into a functional electrical outlet. Check if the ALCI safety plug has tripped; if so, reset it.
- **Weak Airflow:** Check the air filter at the rear of the dryer for any blockages (e.g., lint, hair). Clean the filter as described in the Maintenance section.
- **Overheating:** The dryer has a built-in constant heat monitoring system to prevent overheating. If the dryer shuts off unexpectedly, unplug it and allow it to cool down for a few minutes before restarting. Ensure the air intake and outlet are not blocked.
- **Unusual Noise:** Ensure the air filter is clean and properly seated. If the noise persists, discontinue use and contact customer support.

SPECIFICATIONS

Model Number	HC602 series
Product Dimensions	6.7 x 1.4 x 7.6 inches
Item Weight	13.4 ounces (0.38 Kilograms)
Wattage	1500 watts
Voltage	120V
Power Source	Corded Electric
Motor Speed	110,000 RPM
Number of Speeds	3
Number of Heat Settings	4
Hair Type Compatibility	All
Special Features	ALCI Safety Plug, Cool Shot Button, Indicator Light, Ionic Technology, Removable Air Filter
Included Components	Concentrator

WARRANTY AND SUPPORT

The TYMO AIRHYPE Lite Ionic Hair Dryer comes with a **1-year manufacturer's warranty** from the date of purchase. Please retain your proof of purchase for warranty claims.

For further assistance, technical support, or to download a PDF version of this manual, please visit the official TYMO website or refer to the contact information provided with your product packaging.

You can also access the official User Manual (PDF) [here](#).