

## MOVSSOU E7 Basic C

# MOVSSOU E7 Active Noise Cancelling Headphones User Manual

Model: E7 Basic C

## 1. INTRODUCTION

Thank you for choosing the MOVSSOU E7 Active Noise Cancelling Headphones. This manual provides essential information for setting up, operating, and maintaining your headphones to ensure optimal performance and longevity. Please read this manual thoroughly before using the product.

## 2. PACKAGE CONTENTS

- 1 x MOVSSOU E7 Active Noise Cancelling Bluetooth Wireless Headphones
- 1 x Charge Cable
- 1 x Audio Cable (3.5mm Jack)
- 1 x User Manual

## 3. PRODUCT OVERVIEW

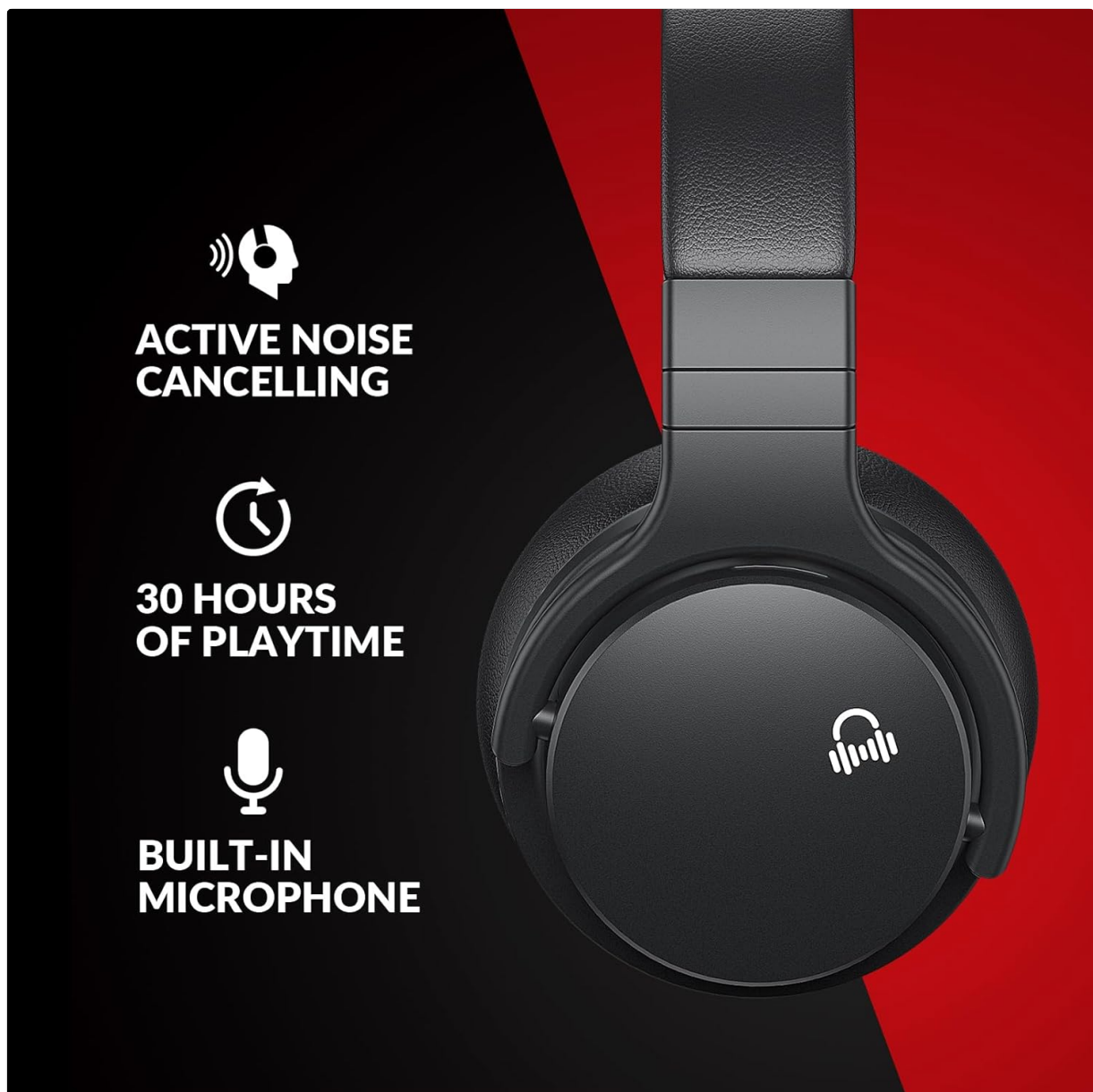
The MOVSSOU E7 headphones are designed for superior audio experience and comfort. Familiarize yourself with the main components and controls.



*Image: Front view of the MOVSSOU E7 Active Noise Cancelling Headphones in black.*

### Key Features:

- **Advanced Active Noise Cancelling (ANC) Technology:** Reduces ambient noise for an immersive listening experience.
- **Superior Call Quality:** Built-in microphone with advanced audio signal processing for clear conversations.
- **Premium Sound Quality:** 45mm drivers deliver deep, powerful, and immersive sound.
- **Pressure-Free Comfort:** Lightweight design with super-soft protein earpads for extended wear.
- **Extended Playtime:** Up to 30 hours of battery life on a single charge.



*Image: Visual representation of key features: Active Noise Cancelling, 30 Hours Playtime, and Built-in Microphone.*

## 4. SETUP

---

### 4.1 Initial Charging

Before first use, fully charge your MOVSSOU E7 headphones. Connect the provided USB charging cable to the charging port on the headphones and the other end to a USB power source (e.g., computer USB port, wall adapter). The LED indicator will show charging status and turn off when fully charged.

### 4.2 Bluetooth Pairing

1. Ensure the headphones are powered off.
2. Press and hold the Power button until the LED indicator flashes blue and red alternately, indicating pairing mode.
3. On your device (smartphone, tablet, laptop), enable Bluetooth and search for available devices.
4. Select "MOVSSOU E7" from the list of devices.
5. Once connected, the LED indicator will turn solid blue.

*Note:* If pairing fails, ensure the headphones are within range (up to 10 meters) and not connected to another device. You may need to forget the device on your Bluetooth list and try pairing again.

## 5. OPERATING INSTRUCTIONS

---

### 5.1 Power On/Off

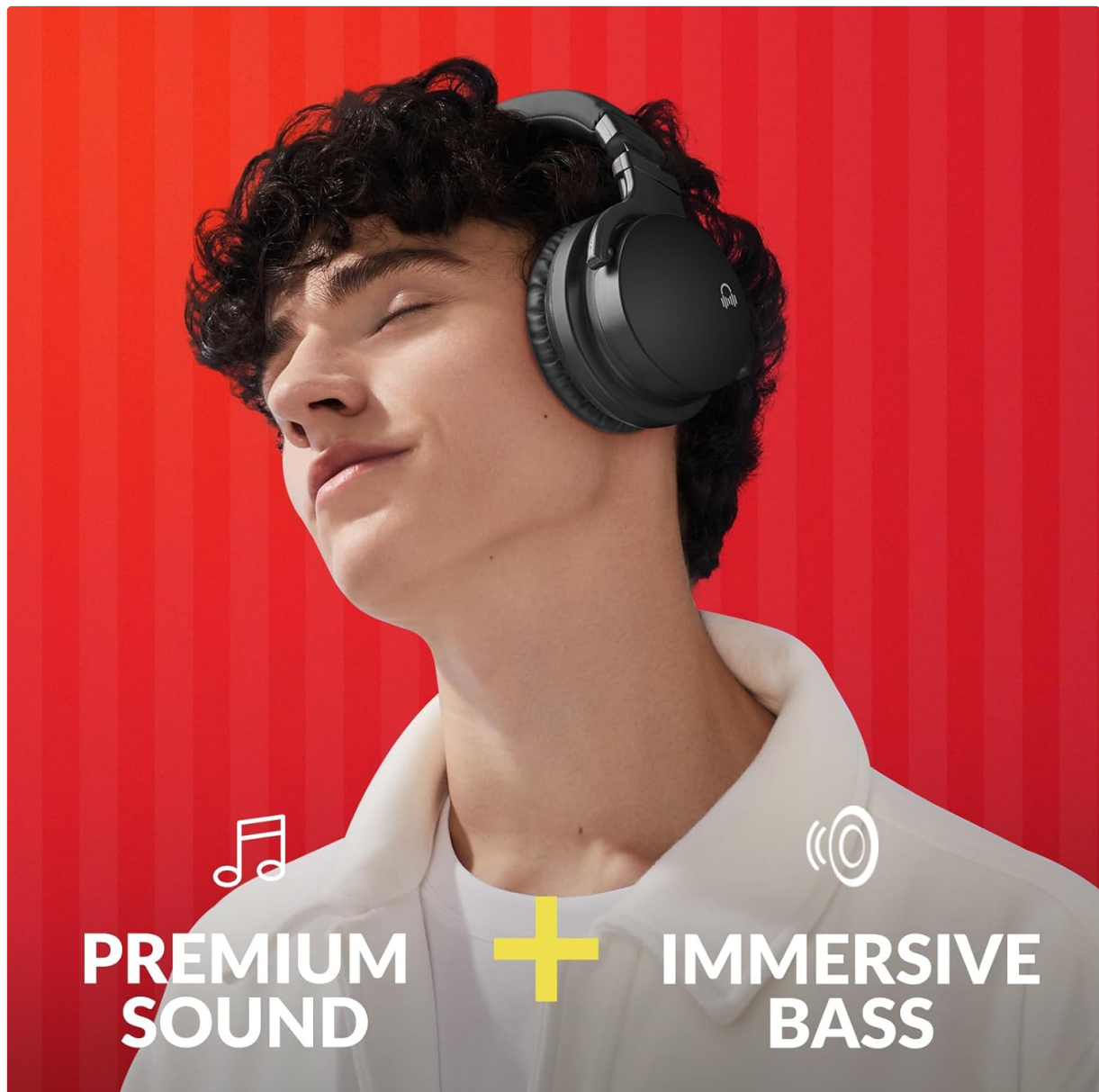
- **Power On:** Press and hold the Power button for approximately 3 seconds until the LED indicator lights up.
- **Power Off:** Press and hold the Power button for approximately 3 seconds until the LED indicator turns off.

### 5.2 Volume Control

- **Volume Up:** Short press the "+" button.
- **Volume Down:** Short press the "-" button.

### 5.3 Music Playback

- **Play/Pause:** Short press the Multi-function button (usually the power button or a dedicated play/pause button).
- **Next Track:** Long press the "+" button.
- **Previous Track:** Long press the "-" button.



*Image: A user experiencing the premium sound and immersive bass of the MOVSSOU E7 headphones.*

## 6. ACTIVE NOISE CANCELLING (ANC)

---

The MOVSSOU E7 headphones feature advanced Active Noise Cancelling technology to reduce ambient noise.

- **Activate ANC:** After powering on the headphones, press the dedicated ANC button (usually located on one of the earcups). The ANC indicator light will illuminate.
- **Deactivate ANC:** Press the ANC button again. The ANC indicator light will turn off.

ANC is most effective at cancelling low and mid-frequency noises, such as engine hums or air conditioning sounds, making it ideal for travel or noisy environments.

## 7. CHARGING AND BATTERY LIFE

---

The MOVSSOU E7 headphones are equipped with a 750mAh battery, providing up to 30 hours of playtime on a single charge.

- **Charging:** Use the provided USB cable to charge the headphones. A full charge typically takes approximately 2-3 hours.
- **Battery Indicator:** The LED indicator will show red during charging and turn off when charging is complete.
- **Low Battery Warning:** An audible prompt will indicate when the battery is low, prompting you to recharge.





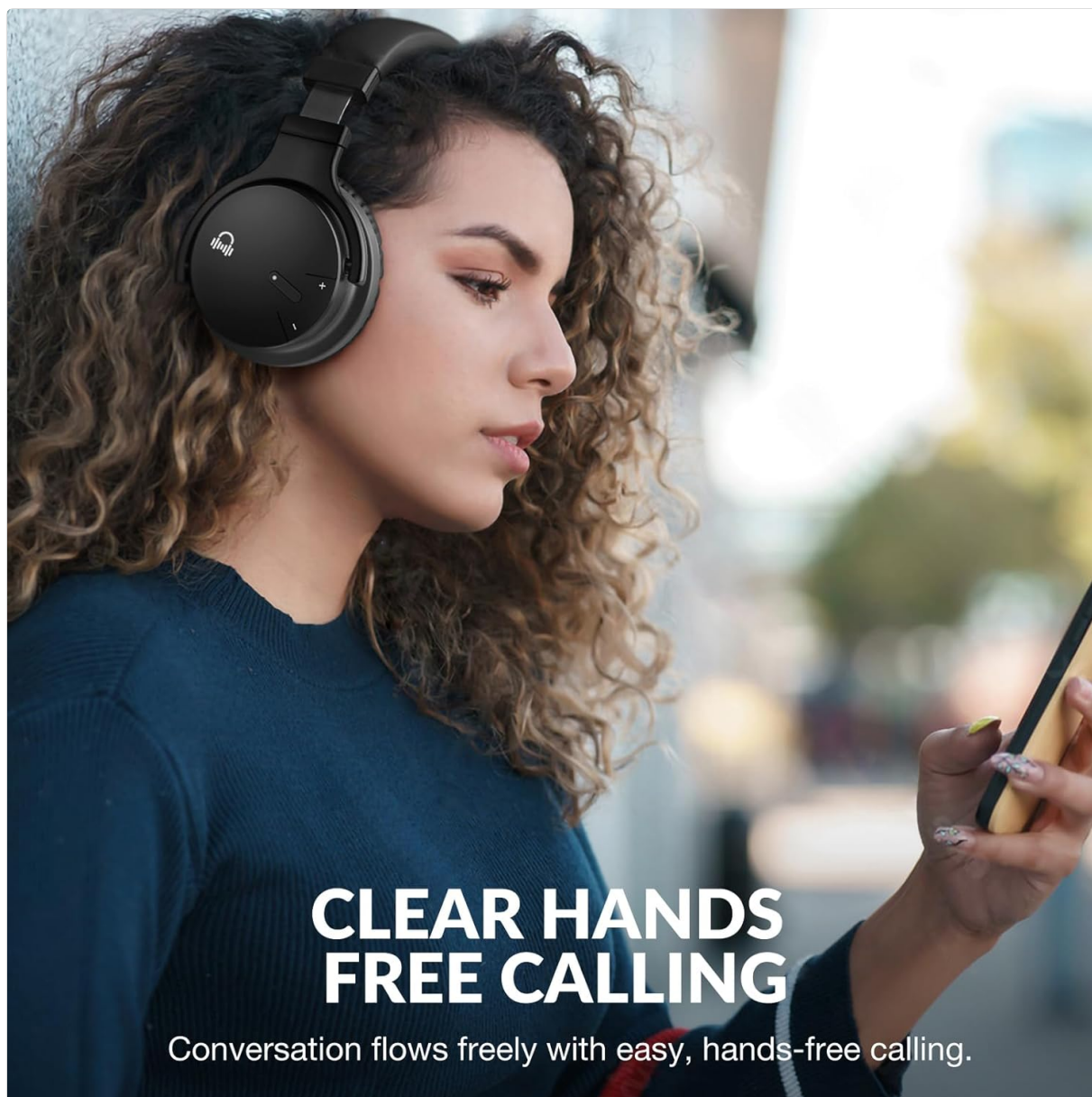
*Image: Graphic illustrating the 30-hour battery life of the MOVSSOU E7 headphones, emphasizing extended playtime.*

## 8. CALL FUNCTIONS

---

The built-in microphone allows for clear, hands-free calling when connected via Bluetooth.

- **Answer/End Call:** Short press the Multi-function button.
- **Reject Call:** Long press the Multi-function button.
- **Redial Last Number:** Double-press the Multi-function button.



*Image: A woman demonstrating clear hands-free calling with the MOVSSOU E7 headphones.*

## 9. MAINTENANCE

---

Proper care ensures the longevity and performance of your headphones.

- **Cleaning:** Use a soft, dry cloth to clean the headphones. Do not use abrasive cleaners or solvents.
- **Storage:** Store the headphones in a cool, dry place away from direct sunlight and extreme temperatures.
- **Avoid Moisture:** The headphones are not water-resistant. Avoid exposure to water or excessive humidity.
- **Handle with Care:** Do not drop, disassemble, or modify the headphones.

## 10. TROUBLESHOOTING

---

If you encounter issues with your MOVSSOU E7 headphones, refer to the following common solutions:

Problem	Possible Cause	Solution
---------	----------------	----------

Problem	Possible Cause	Solution
Headphones do not power on	Low battery	Charge the headphones fully.
Cannot pair via Bluetooth	Headphones not in pairing mode; device Bluetooth off; out of range	Ensure headphones are in pairing mode (flashing red/blue). Turn on device Bluetooth. Move headphones closer to device. Forget "MOVSSOU E7" on device and re-pair.
No sound or low volume	Volume too low; incorrect audio source; loose cable (if wired)	Increase volume on both headphones and connected device. Ensure correct audio output is selected on your device. Check 3.5mm audio cable connection if using wired mode.
ANC not working effectively	ANC not activated; type of noise	Ensure ANC is activated (ANC indicator light on). ANC is most effective for low-frequency, constant noises, not sudden or high-frequency sounds.
Poor call quality	Microphone obstructed; weak Bluetooth connection	Ensure microphone is clear. Move closer to the connected device to improve Bluetooth signal.

## 11. SPECIFICATIONS

Feature	Detail
Model Name	E7 Wireless Noise Cancelling Headphones
Connectivity Technology	Wireless, Bluetooth
Bluetooth Version	5.0
Noise Control	Active Noise Cancellation
Audio Driver Size	45 mm
Frequency Response	20 Hz - 20,000 Hz
Battery Life	Up to 30 Hours
Headphones Jack	3.5 mm Jack
Item Weight	14.4 ounces
Ear Placement	Over Ear
Control Type	Noise Control, Voice Control, Call Control, Volume Control

## 12. WARRANTY AND SUPPORT

For warranty information and customer support, please refer to the documentation included with your purchase or visit the official MOVSSOU brand store. You can find more information and contact details at the [MOVSSOU Store on Amazon](#).



