

## Midea NY2009-22M

# Midea 2000W Electric Oil-Filled Radiator

MODEL: NY2009-22M

## Important Safety Instructions

Please read this entire instruction manual carefully before operating the appliance. Failure to follow these instructions may result in electric shock, fire, or serious injury.

- Always unplug the heater when not in use or before cleaning.
- Do not operate the heater with a damaged cord or plug, or after the heater malfunctions or has been dropped or damaged in any manner.
- Do not use outdoors. This heater is intended for indoor use only.
- Keep combustible materials such as furniture, pillows, bedding, papers, clothes, and curtains at least 1 meter (3 feet) from the front and sides of the heater.
- Do not insert or allow foreign objects to enter any ventilation or exhaust opening as this may cause an electric shock or fire, or damage the heater.
- To prevent a possible fire, do not block air intakes or exhaust in any manner. Do not use on soft surfaces, like a bed, where openings may become blocked.
- This heater includes a tip-over switch and overheat protection feature for enhanced safety. If the heater tips over or overheats, it will automatically shut off.
- Do not use in bathrooms, laundry areas, or similar indoor locations where water is present.

## Product Overview

The Midea NY2009-22M is a 2000W electric oil-filled radiator designed for efficient and quiet heating of indoor spaces. It features 9 heating elements, an adjustable thermostat, and an ECO mode for energy saving.

# ECO-Modus, intelligente Energieeinsparung

Stoppt automatisch die Heizung nach Erreichen der Zieltemperatur, effiziente Nutzung der Energie.



**Image:** Front control panel of the Midea radiator, showing the heat setting dial, power indicator, and thermostat control. This image highlights the ECO mode feature and intelligent energy saving capabilities.

The unit is equipped with a control panel for easy operation, including a power switch, heat setting dial, and thermostat knob. It also features integrated wheels for convenient portability.

## Setup

Follow these steps for initial setup:

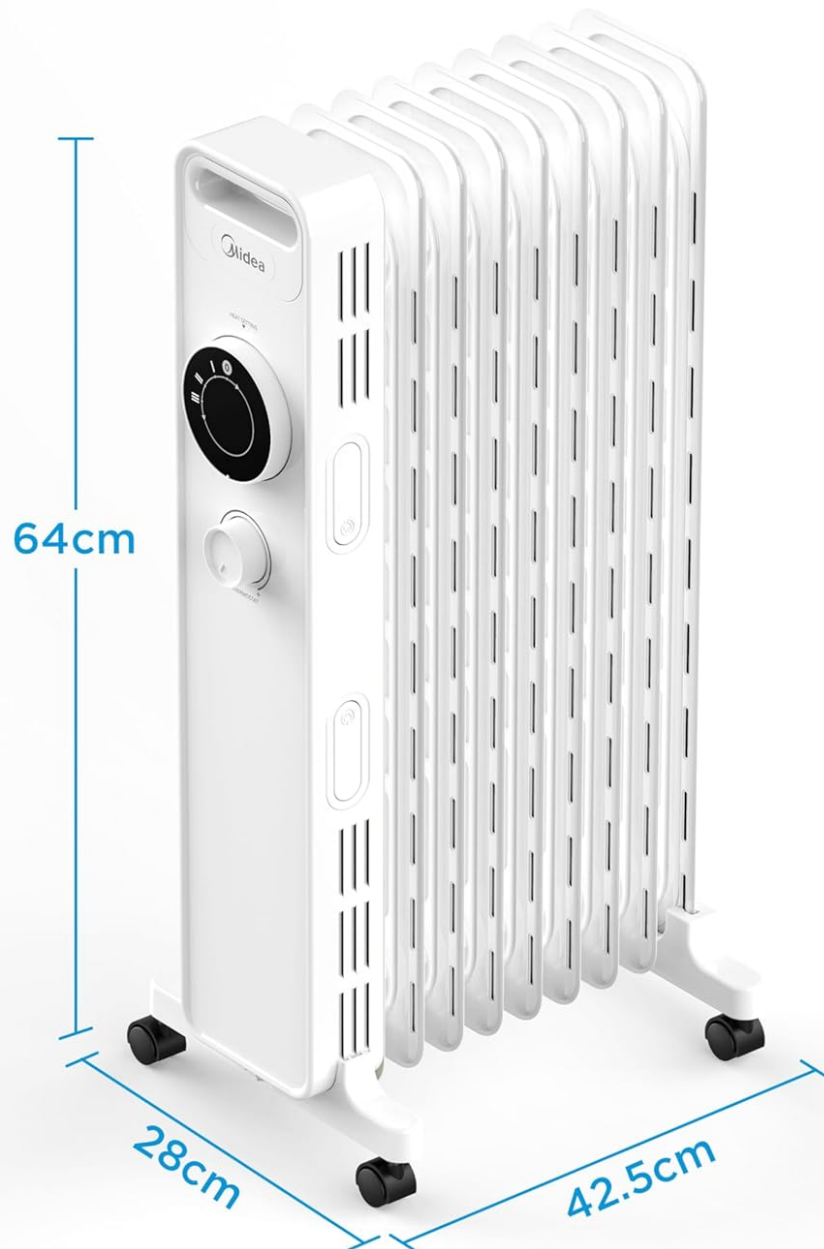
1. **Unpacking:** Carefully remove the heater from its packaging. Retain packaging for future storage.
2. **Placement:** Place the heater on a firm, level surface. Ensure there is at least 1 meter (3 feet) of clear

space around the heater from walls, furniture, and other objects to allow for proper air circulation and prevent fire hazards.

3. **Power Connection:** Plug the power cord into a grounded 230V AC electrical outlet. Do not use extension cords or power strips.

## Kompakte Größe, einfach zu platzieren

Spezifikation 2000W / 9Flossen



**Image:** The Midea radiator with its dimensions (64cm height, 28cm width, 42.5cm depth) highlighted, illustrating its compact size and ease of placement. The image also shows the integrated wheels for portability.

### Operating Instructions

To operate your Midea oil-filled radiator:

1. **Power On:** Plug the heater into a suitable electrical outlet. Turn the heat setting dial to your desired power level (e.g., I, II, III for different wattage outputs, up to 2000W).
2. **Set Thermostat:** Turn the thermostat knob clockwise to increase the desired temperature or counter-

clockwise to decrease it. The heater will cycle on and off to maintain the set temperature.

3. **ECO Mode:** For energy-efficient operation, select the ECO mode (if available on your model's control panel). In ECO mode, the heater automatically adjusts its power output to maintain the set temperature while minimizing energy consumption.
4. **Power Off:** To turn off the heater, turn the heat setting dial to the '0' position and unplug the unit from the wall outlet.

## Breiteres Spektrum der Heizung

Leistungsstarke 2000W  
Heizung bietet Wärme für große Räume.



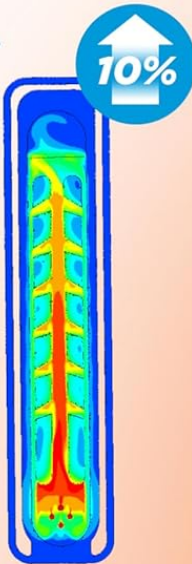
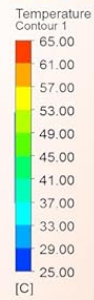
**Image:** The Midea 2000W radiator effectively heating a spacious living room, demonstrating its wide heating range and powerful performance for larger areas.



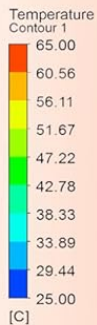
# Neuer Ölkreislauf für Schnelles Aufheizen

Hochwertiger Ölkreislauf des Fischgrätentyps,  
erhöhen Sie schnell die Raumtemperatur.

**New**



**Old**



**Image:** An illustration of the Midea radiator's new, high-quality herringbone-type oil circuit, designed for fast heating and quick room temperature increase.

## 3D gleichmäßige Wärmeableitung

Mit patentiertem Wabenloch-Kühlkörper,  
effiziente Nutzung von Energie



**Image:** A visual representation of the Midea radiator's 3D uniform heat dissipation system, featuring a patented honeycomb-hole heat sink for efficient energy use and even heat distribution.

# Schlaffreundlich, geräuschlos und lichtlos

Sorgen Sie beim Heizen für eine  
hochwertige Schlafumgebung.



**Image:** The Midea radiator operating quietly in a bedroom, illustrating its sleep-friendly, noiseless, and lightless design, contributing to a high-quality sleeping environment.

## Maintenance

Regular maintenance ensures optimal performance and longevity of your heater.

- **Cleaning:** Always unplug the heater and allow it to cool completely before cleaning. Wipe the exterior surfaces with a soft, damp cloth. Do not use abrasive cleaners or solvents. Do not immerse the heater in water.
- **Storage:** When not in use, store the heater in a cool, dry place. It is recommended to store it in its original packaging to protect it from dust and damage.



## Troubleshooting

If your heater is not operating correctly, please check the following:

Problem	Possible Cause	Solution
Heater does not turn on.	No power to the unit.	Ensure the power cord is securely plugged into a working electrical outlet. Check the circuit breaker.
Heater is on but not heating.	Thermostat set too low.	Increase the thermostat setting.
Heater automatically shuts off.	Overheat or tip-over protection activated.	Unplug the heater, allow it to cool for 30 minutes. Check for obstructions around the heater. Ensure it is on a stable, level surface. Plug back in and restart.

## Specifications

Feature	Specification
Brand	Midea
Model Number	NY2009-22M
Power	2000W
Voltage	230 Volts (AC)
Number of Speeds	3
Color	White
Dimensions (L x W x H)	42.5 x 28 x 64 cm
Item Weight	9.43 Kilograms
Special Features	Electronic Thermostat, Energy Efficient
Heating Method	Convection
Indoor/Outdoor Use	Indoor
Mounting Type	Floor Mount

## Warranty and Support

For warranty information or technical support, please refer to the warranty card included with your product or contact Midea customer service directly. Keep your purchase receipt as proof of purchase.

Contact information for Midea customer support can typically be found on the manufacturer's official website or on the product packaging.



