

vidaXL 153200

vidaXL Garden Gate 100x175 cm Corten Steel Square Design Instruction Manual

1. INTRODUCTION

This manual provides essential information for the assembly, operation, and maintenance of your vidaXL Garden Gate 100x175 cm Corten Steel Square Design. This gate combines durability with an elegant laser-cut design, serving as an ideal entrance for your garden or patio. Please read these instructions carefully before installation and use to ensure safe and correct operation.



Figure 1: The vidaXL Garden Gate installed, showcasing its Corten steel finish and square design.

2. SAFETY INFORMATION

For detailed safety guidelines and warnings, please refer to the separate 'Safety Information' PDF document provided with your product. Always prioritize safety during assembly and use. Ensure all components are securely fastened before operating the gate.

Important: Keep children and pets away from the gate during installation and ensure proper supervision during its use to prevent accidents.

You can access the safety document here: [Safety Information \(PDF\)](#)

3. PACKAGE CONTENTS

Verify that all parts are present and undamaged before beginning assembly. The package should contain:

- 1x Garden Gate Panel (100x175 cm)
- 2x Gate Posts with Flanged Plates
- 1x Lock System (handle, lock cylinder, keys)
- Mounting Accessories (screws, bolts, hinges, etc.)

4. SETUP AND ASSEMBLY

The gate is designed for straightforward installation. Follow these steps carefully:

1. **Prepare the Installation Area:** Ensure the ground where the posts will be installed is level and stable. Mark the precise positions for the gate posts according to the gate's dimensions.
2. **Install the Gate Posts:** Securely fasten the two gate posts using the provided flanged plates and mounting accessories. Depending on your surface (concrete, decking), appropriate anchors may be required (not always included). Ensure the posts are plumb and at the correct distance for the gate panel.

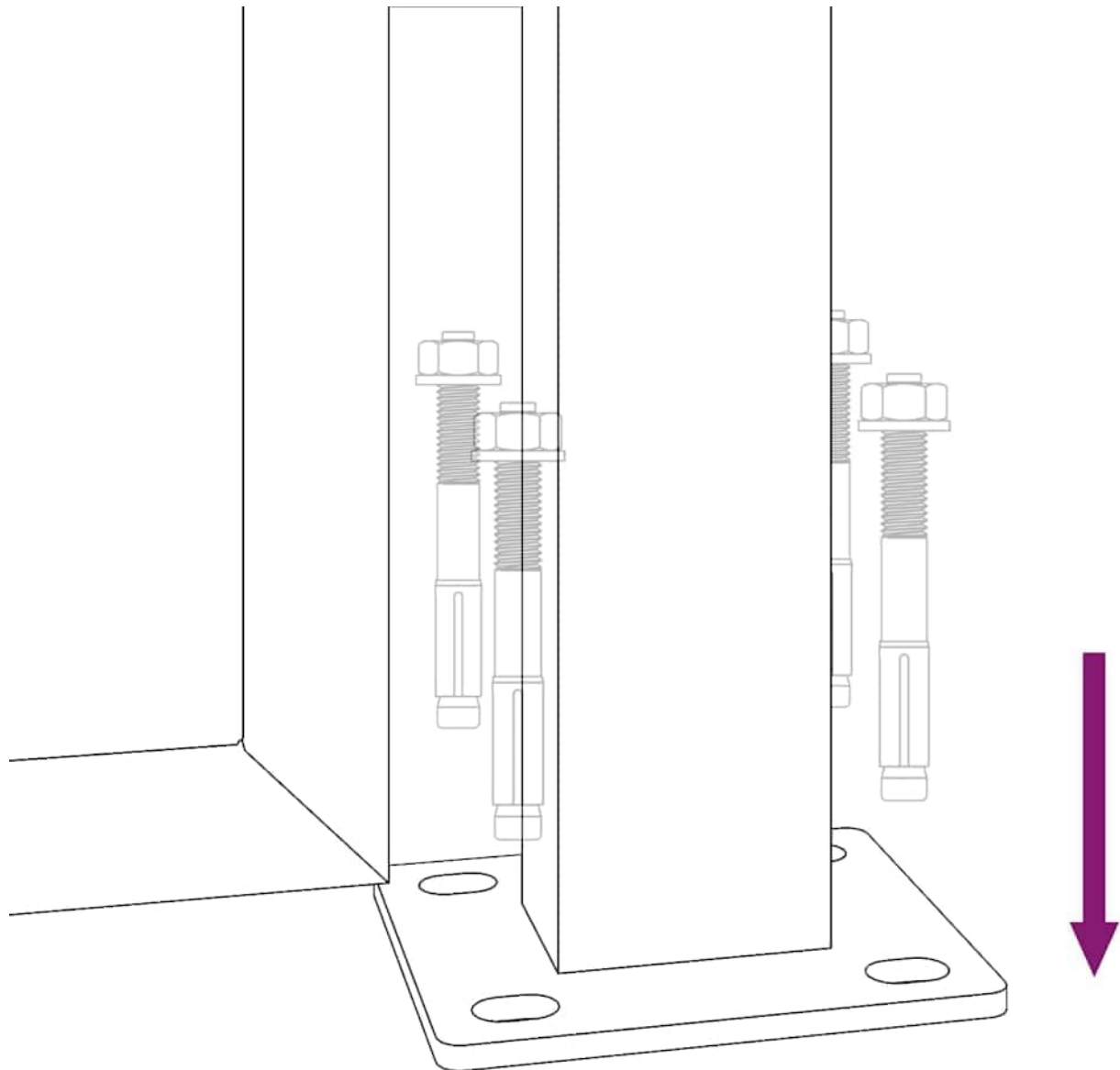


Figure 2: Illustration of securing a gate post using flanged plates and bolts.

3. **Attach the Gate Panel:** Mount the gate panel to the installed posts using the provided hinges. Ensure the hinges are aligned correctly for smooth opening and closing.
4. **Install the Lock System:** Attach the handle and lock cylinder to the designated area on the gate panel. Test the lock mechanism to ensure it functions correctly.
5. **Final Adjustments:** Check the gate's alignment and ensure it opens and closes freely without obstruction. Make any necessary adjustments to the hinges or post positions.

Dimensions Overview

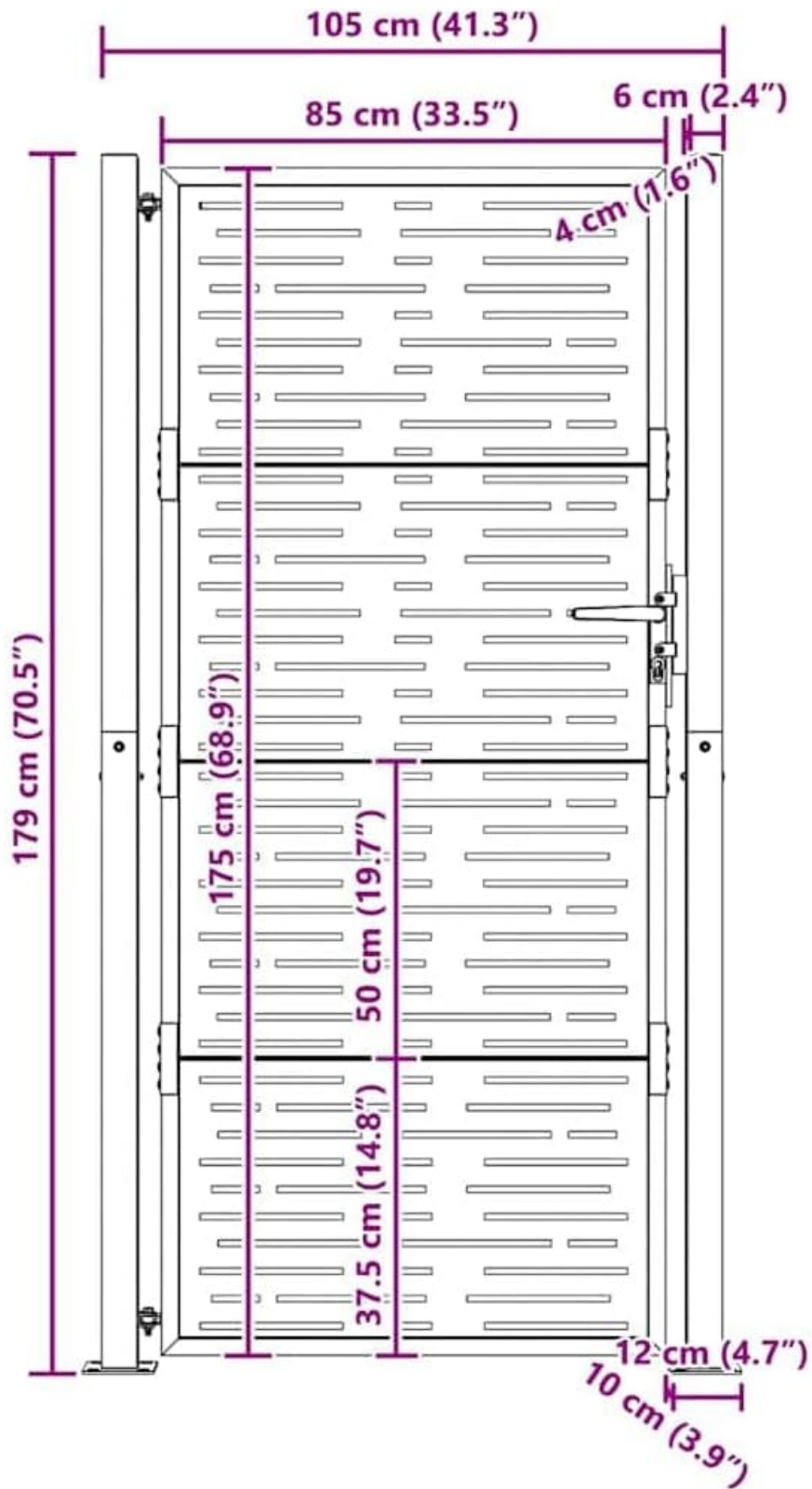


Figure 3: Detailed dimensions of the garden gate, including height, width, and post measurements.

5. OPERATING INSTRUCTIONS

The vidaXL Garden Gate is equipped with a secure lock system for your peace of mind.

- **Opening the Gate:** Insert the key into the lock cylinder and turn to unlock. Depress the handle to disengage the latch and pull the gate open.
- **Closing the Gate:** Push the gate shut until the latch engages with the strike plate. For added security, turn the key to lock the gate.



Figure 4: Close-up view of the integrated lock and handle for secure operation.

6. MAINTENANCE

Your Corten steel garden gate is designed to develop a unique rust-like appearance over time, which also forms a protective layer against further corrosion. This process is natural and intended.

Corten Steel Weathering Process

Upon delivery, the gate may appear grey or unruled (see Figure 5). The distinctive rust color develops gradually when exposed to weather elements like rain and humidity. This process can take several weeks to months, depending on environmental conditions. The resulting rust layer is stable and adheres to the surface, protecting the underlying steel.



Figure 5: The gate in its initial state, before the Corten steel develops its characteristic rust patina.

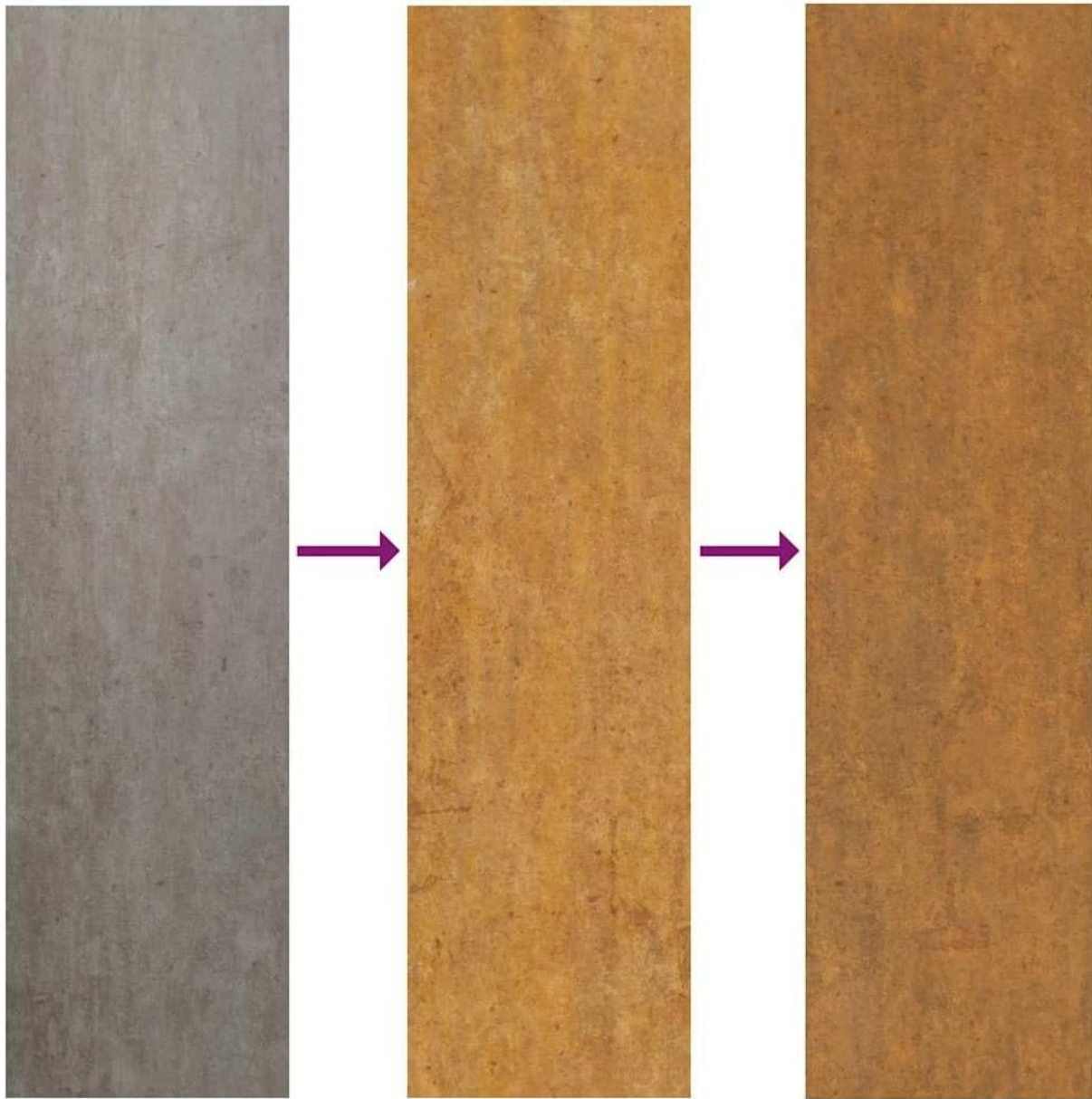


Figure 6: Visual representation of Corten steel developing its protective rust layer over time.

Cleaning and Care

- **Regular Cleaning:** Periodically wipe the gate with a soft cloth to remove dirt and debris. Avoid abrasive cleaners or harsh chemicals, as these can damage the protective rust layer.
- **Rust Development:** Do not attempt to remove the rust, as it is an integral part of the Corten steel's protective and aesthetic properties.
- **Hinge Lubrication:** Lubricate hinges annually with a suitable outdoor lubricant to ensure smooth operation and prevent squeaking.

7. TROUBLESHOOTING

- **Gate appears grey or unrudded upon arrival:** This is normal for Corten steel. The rust patina develops naturally over time with exposure to weather. This is not a defect.
- **Gate is stiff or squeaks:** Check hinges for dirt or rust. Clean and apply a suitable lubricant. Ensure no parts are bent or misaligned.
- **Gate does not close or latch properly:** Verify that the gate posts are plumb and parallel. Check if the hinges are securely fastened and correctly aligned. Inspect the latch and strike plate for any obstructions or damage.

- **Lock mechanism is difficult to operate:** Ensure the key is fully inserted. Apply a small amount of graphite lubricant to the lock cylinder if it feels stiff.

8. SPECIFICATIONS

Product Dimensions	105 x 105 x 180 cm (L x W x H)
Gate Panel Dimensions	100 x 175 cm (W x H)
Product Weight	24.4 kg
Material	Corten Steel (Metal)
Model Number	153200
Design	Square, Laser-cut

9. WARRANTY AND SUPPORT

While specific warranty details are not provided in this document, vidaXL products typically adhere to standard consumer protection laws regarding product quality and fitness for purpose.

Returns: This product is generally returnable within 30 days of receipt. Please refer to your purchase platform's return policy for specific terms and conditions.

Customer Support: For any questions, assistance with assembly, or issues with your product, please contact vidaXL's specialized customer service. Contact details can usually be found on the vidaXL website or through your purchase platform.