

LENSGO Smoke B

LENSGO Smoke B 40W Portable Handheld Fog Machine Instruction Manual

Model: Smoke B

INTRODUCTION

The LENS GO Smoke B is a versatile 40W portable handheld fog machine designed to produce a substantial amount of smoke for various applications. Its compact size and remote control functionality make it ideal for photography, outdoor events, parties, stage effects, Halloween, disinfection, and weddings. This manual provides essential information for the safe and effective operation and maintenance of your device.

WHAT'S IN THE BOX

- LENS GO Smoke B Fog Machine (1 unit)
- Fog Machine 12ml Fluid (6 bottles)
- Remote control (1 unit)
- Hard straight tube (1 unit)
- Hard Elbow (1 unit)
- Silicone hose (1 unit)
- Liquid smoke filter (1 unit)
- High pressure nozzle (1 unit)
- Charging cable (1 unit)
- Receiving bag (1 unit)
- Box (1 unit)

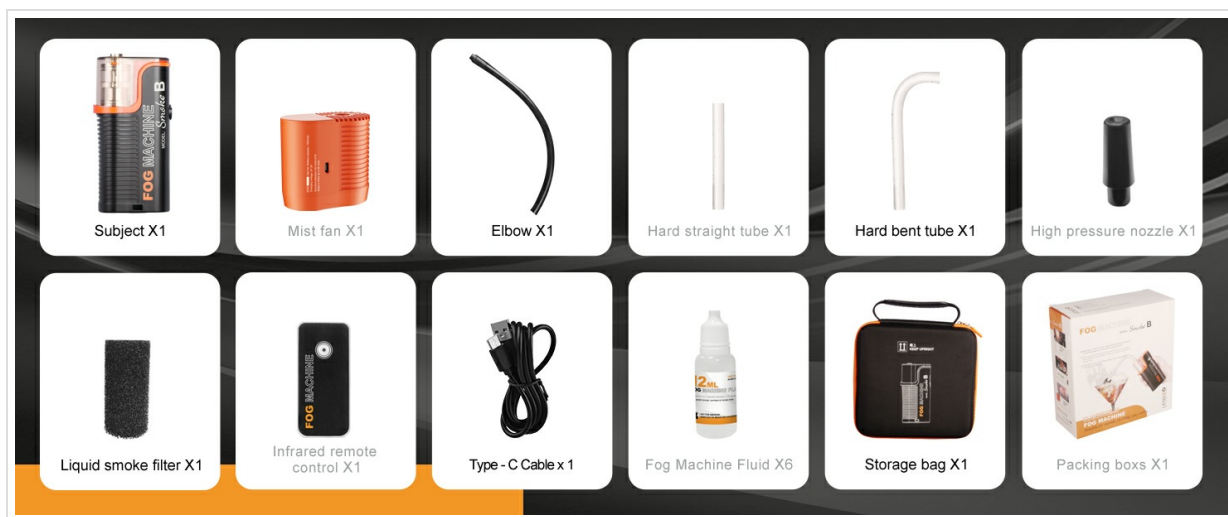


Image: Detailed view of all items included in the LENS GO Smoke B package, neatly arranged in its carrying case.

SETUP

- 1. Initial Charge:** For shipping safety, the fog machine battery is only about 20% charged. Fully recharge the device using the provided charging cable before first use. Charging takes approximately 3 hours.
- 2. Fill Fluid Tank:**
 - Gently lift the silicone cover on the fluid tank.
 - Locate the oil injection hole.
 - Carefully fill the tank with the LENS GO fog fluid. Ensure the tank is not overfilled.
 - Replace the silicone cover securely.
 - Wait 5 minutes after refilling before using to allow the fluid to saturate the system.
- 3. Attach Accessories:** Select the desired tube (hard straight, hard elbow, silicone hose) and nozzle (liquid smoke filter, high pressure nozzle) for your intended effect and securely attach them to the device's output port.

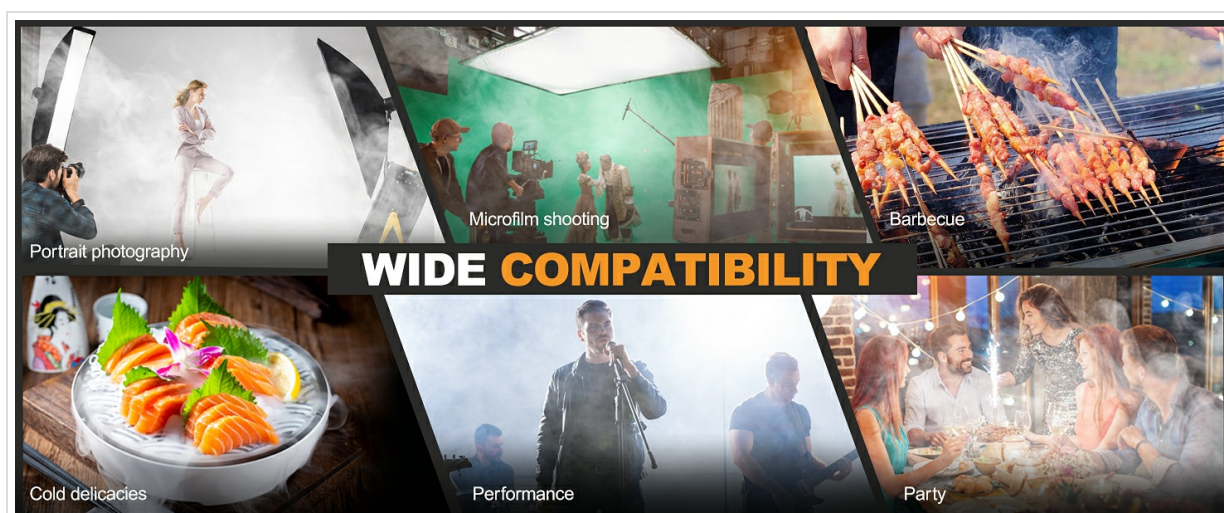


Image: Visual guide demonstrating the steps for refueling the LENS GO Smoke B fog machine and installing the heat shield.

Video: Official LENS GO instruction video demonstrating the setup and basic operation of the handheld fog machine, including fluid loading and accessory attachment.

OPERATING INSTRUCTIONS

- 1. Power On/Off:** Press the power button for 3 seconds to turn the device on or off.
- 2. Activate Smoke:** After the device is powered on, press the power button twice to open the smoke output.

3. **Remote Control:** The included wireless remote control allows you to activate the smoke from a distance of up to 10 meters. Press the 'A' button twice to open the smoke, and press the 'B' button once to turn off the smoke.
4. **Smoke Modes/Effects:** The LENS GO Smoke B supports various smoke modes and effects depending on the attached accessories and settings. These include: Portrait mode, Dry ice mode, Film Level Mist mode, Smoke effects, Incense burning mode, and Controlled smoke.
5. **Continuous Use:** The machine is designed to work continuously for 3 minutes, then stops spraying for 2 seconds to prevent overheating. When fully charged, it can produce smoke continuously for 18 minutes.

Q: What if the smoke machine light is Red or Green ?

A: If Red: Maybe the fog machine is low battery

If Green: (1) Please tighten the oil tank manually; (2) The tank has damaged the pipeline, replacement a new Tank

If all not, Please let's us know

Q: What if the fog machine can't turn on?

A: Maybe the fog machine is low battery. For shipping safety, the fog machine new battery is only about 20% charged. Please recharge it before use.

If all not, Please let's us know

Q: What If the fog machine is black smoke, and there are strange smells or loud noises?

A: Please clean the remaining liquid in the tank and inject new fog fluid

Q: What If the smoke machine will be oil injection when turn on ?

A: This is normal. Almost all fog machines will have this phenomenon. Please trying it a few more times, it will not spray oil.

Instructions Manual and Tips:

The machine must stop for 3 seconds if it works continuously for 3 minutes. And after 18 minutes of work, the machine must wait to cool down. And if dry heat the machine when out of liquid, the oil tank would become hot and damage the pipe.

LENS GO Offers 24 hours consulting service. If you have any questions about our product, Please let us know

Image: Illustration of six different smoke modes achievable with the LENS GO Smoke B and its various accessories.

Video: Official LENS GO promotional video showcasing the Smoke B fog machine in action, demonstrating various smoke effects for different shooting scenarios.

MAINTENANCE

- **Fluid Management:** Always ensure there is sufficient fog fluid in the tank. Operating the machine without fluid can cause the oil tank to become hot and potentially damage the pipe.
- **Cleaning:** If the fog machine produces black smoke or strange odors, clean any remaining liquid in the tank and inject new fog fluid.
- **Storage:** Store the device in its receiving bag or case in an upright position to prevent leaks.

TROUBLESHOOTING

Q: What if the smoke machine light is Red or Green?

A: If Red, the fog machine may have low battery. If Green, (1) please lighten the oil tank manually; (2) the tank has damaged the pipeline, replacement of a new tank may be needed. If all else fails, please contact support.

Q: What if the fog machine can't turn on?

A: The fog machine may have low battery. For shipping safety, the fog machine new battery is only about 20% charged. Please recharge it before use. If all else fails, please contact support.

Q: What if the fog machine is black smoke, and there are strange smells or loud noises?

A: Please clean the remaining liquid in the tank and inject new fog fluid.

Q: What if the smoke machine will be oil injection when turn on?

A: This is normal. Almost all fog machines will have this phenomenon. Please try it a few more times; it will not spray oil.

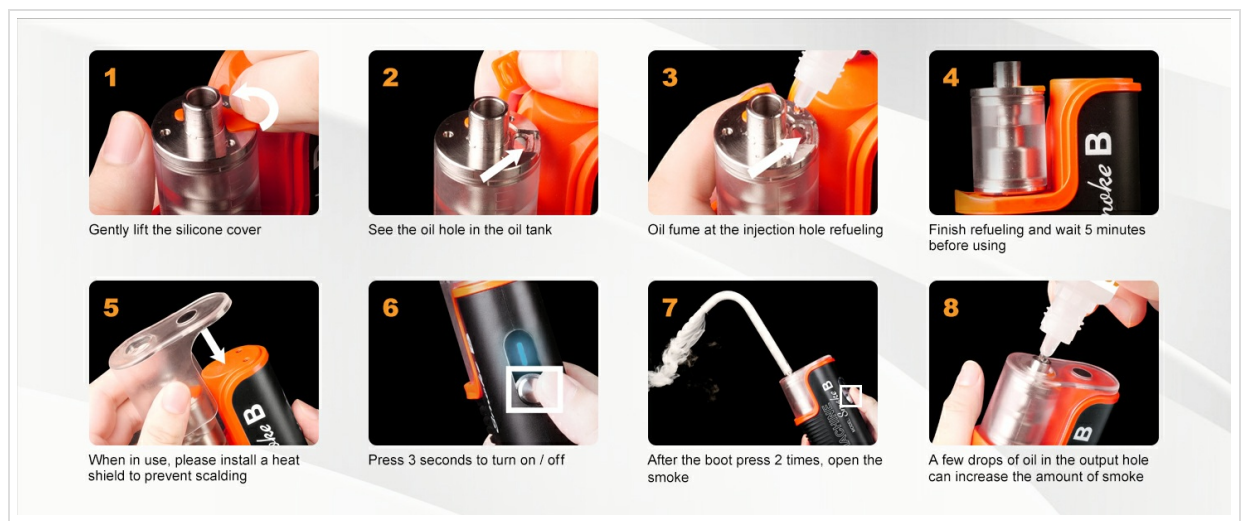


Image: A visual representation of common troubleshooting questions and answers for the LENS GO Smoke B fog machine.

SPECIFICATIONS

Model	Smoke B
Item Weight	2.66 pounds
Package Dimensions	9.17 x 8.74 x 3.46 inches
Power	40W
Voltage	7.4V
Charging Voltage	5V 2A
Battery Capacity	2550 mAh
Continuous Use Time	18 minutes (after 2 hours charge)
Charging Time	Approximately 3 hours
Tank Capacity	12 ml
Liquid Composition	VG (vegetable glycerin) + PG (propylene glycol)
Smoke Output	Covers 20 cubic meters in 1 minute
Color	Black

WARRANTY AND SUPPORT

LENS GO offers 24-hour consulting service for any questions or concerns about your product. Please contact us for assistance.