

NJOY Echo Pro 2000

NJOY Echo Pro 2000 UPS Server User Manual

Model: Echo Pro 2000 | Brand: NJOY

1. INTRODUCTION

The NJOY Echo Pro 2000 is an advanced Uninterruptible Power Supply (UPS) designed to provide reliable power protection for critical equipment such as servers, workstations, and networking devices. Featuring double conversion online technology, it delivers a pure sine wave output, ensuring the highest degree of compatibility and protection for sensitive electronics. This manual provides essential information for the safe and efficient installation, operation, and maintenance of your Echo Pro 2000 UPS.



**2000
VA**

**1600
W**

4x Battery



12V@7,0Ah

**USB
HID**

Figure 1.1: Front view of the NJOY Echo Pro 2000 UPS. This image shows the main unit with its front panel display and control buttons.

2. SAFETY INFORMATION

Please read and follow all safety instructions carefully before installing, operating, or servicing the UPS. Failure to comply with these instructions may result in electric shock, fire, or serious injury.

- **Electrical Safety:** The UPS contains hazardous voltages. Do not attempt to disassemble the unit. Servicing should only be performed by qualified personnel.
- **Battery Safety:** Batteries can present a risk of electrical shock and high short-circuit current. Observe proper polarity when connecting batteries. Do not dispose of batteries in a fire.
- **Environment:** Install the UPS in a well-ventilated area, free from excessive dust, humidity, and corrosive substances. Avoid direct sunlight and heat sources.
- **Grounding:** Ensure the UPS is properly grounded to prevent electrical shock.
- **Emergency Power Off (EPO):** Familiarize yourself with the EPO function for immediate shutdown in emergencies.

3. PRODUCT OVERVIEW

3.1 Key Features

- **Double Conversion Online Technology:** Provides continuous, clean power by converting incoming AC to DC and then back to AC, isolating connected equipment from utility power fluctuations.
- **Pure Sine Wave Output:** Ensures compatibility with all types of electronic loads, preventing distortion and electrical noise.
- **Low Noise Level:** Operates at less than 40 dB, suitable for office environments.
- **Software Management:** Includes specialized software for remote monitoring, scheduled power on/off, battery tests, and complete UPS configuration.
- **Communication Ports:** Equipped with RS232, HID USB, and EPO ports. An optional SNMP card slot is available for advanced network monitoring.
- **Internal Batteries:** Features 4 x 12V7Ah sealed lead-acid batteries for reliable backup power.

3.2 Rear Panel Connections



Figure 3.1: Rear panel of the NJOY Echo Pro 2000 UPS, showing various connection ports.

1. **RS232 Interface:** For serial communication with a computer or network device.
2. **Schuko Outlets (x4):** Output receptacles for connecting protected equipment.
3. **Input Circuit Breaker:** Overcurrent protection for the UPS input.
4. **Fan:** Cooling fan for internal components.
5. **SNMP Slot:** Expansion slot for an optional SNMP card (not included) for network management.
6. **EPO (Emergency Power Off):** Connector for remote emergency shutdown.
7. **USB Interface:** For USB communication with a computer.
8. **AC Input:** Power input connector for the UPS.

4. SETUP

Follow these steps to properly set up your NJOY Echo Pro 2000 UPS:

1. **Unpacking:** Carefully unpack the UPS and inspect it for any shipping damage. Report any damage to your dealer.
2. **Placement:** Place the UPS in a clean, dry, and well-ventilated indoor environment. Ensure adequate clearance around the unit for proper airflow. Avoid placing it near heat sources or in direct sunlight.
3. **Initial Charging:** Connect the UPS to a grounded AC power outlet using the provided power cord. Allow the UPS to charge for at least 8 hours before connecting any equipment to ensure optimal battery performance. The LCD display will indicate charging status.
4. **Connecting Equipment:** Once the UPS is fully charged, connect your critical equipment (servers, computers, monitors, etc.) to the Schuko output receptacles on the rear panel. Do not connect surge suppressors or power strips to the UPS output.
5. **Communication Setup:** For monitoring and management, connect the UPS to your computer using the provided USB or RS232 cable. Install the specialized management software (refer to Section 5.2).
6. **EPO Connection (Optional):** If using the Emergency Power Off function, connect the EPO cable to the designated port.

5. OPERATING INSTRUCTIONS

5.1 Powering On/Off

- **To Power On:** Press and hold the 'ON' button on the front panel for approximately 2 seconds until the UPS powers on and the LCD display illuminates.
- **To Power Off:** Press and hold the 'OFF' button for approximately 2 seconds. The UPS will shut down, and the display will turn off.

5.2 LCD Display and Control Buttons

The front panel LCD provides real-time status information. Use the 'ENTER' and 'ESC' buttons to navigate through the display menus and view various parameters such as input/output voltage, battery level, load level, and operating mode.

5.3 Software Management

The included software allows for comprehensive monitoring and control of the UPS. Install the software on a connected computer to:

- Monitor real-time UPS status and parameters.
- Schedule automatic power on/off and battery tests.
- Configure UPS settings and alarm thresholds.
- Receive notifications for power events.

- Perform safe shutdown of connected computer systems during extended power outages.

Il Software Management consente di:

- *Visualizzazione dello stato di funzionamento.*
- *Schedulazione dell'accensione, spegnimento, test batteria.*
- *Configurazione completa dell'UPS.*

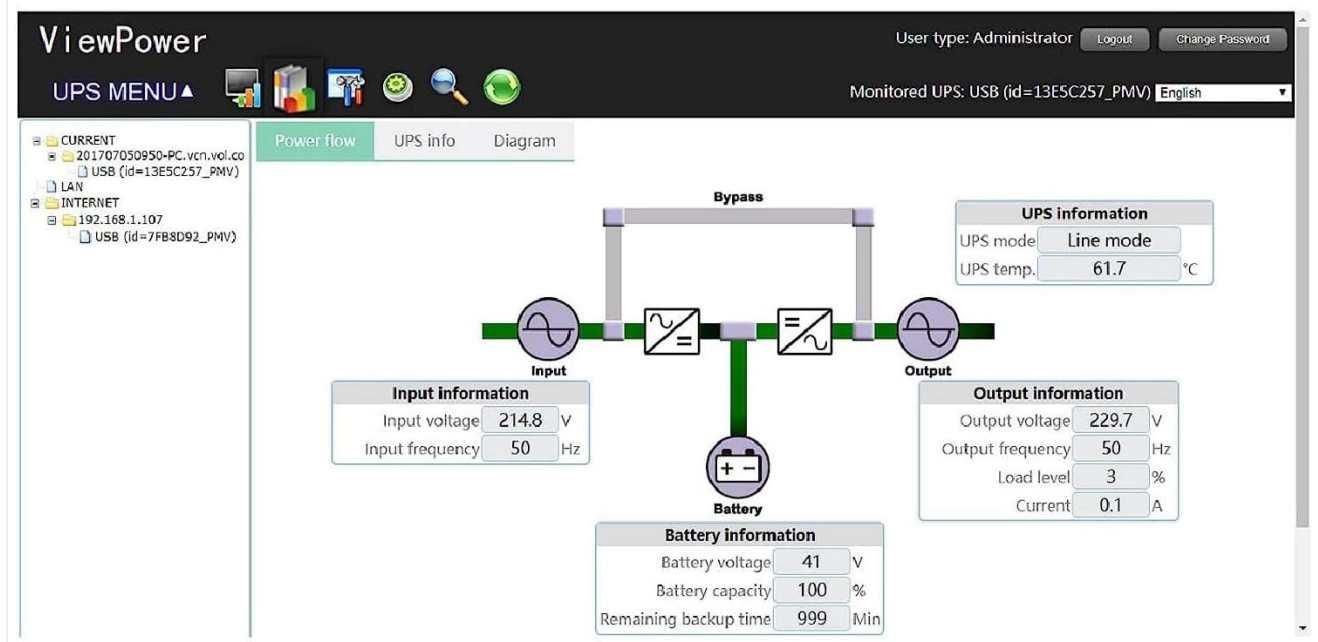


Figure 5.1: Example of the UPS management software interface, showing status and configuration options.

6. MAINTENANCE

Regular maintenance ensures the longevity and optimal performance of your UPS.

- **Battery Care:** The UPS contains sealed lead-acid batteries. These batteries typically last 3-5 years under normal operating conditions. Replace batteries when their runtime significantly decreases. Only use replacement batteries of the same type and rating (4 x 12V7Ah). Battery replacement should be performed by qualified service personnel.
- **Cleaning:** Keep the UPS clean and free of dust. Use a dry cloth to wipe the exterior. Do not use liquid cleaners or solvents. Ensure ventilation openings are clear of obstructions.
- **Environmental Conditions:** Maintain the UPS within the recommended operating temperature and humidity ranges to prolong its lifespan.
- **Self-Test:** Periodically perform a battery self-test using the management software or front panel controls to assess battery health.

7. TROUBLESHOOTING

This section provides solutions to common issues you might encounter with your UPS. If the problem persists, contact technical support.

Problem	Possible Cause	Solution
UPS does not turn on	No AC input; Low battery; UPS fault	Check AC power cord connection; Allow UPS to charge; Contact support if fault persists.
UPS beeps continuously	Overload; Low battery; UPS fault	Reduce connected load; Allow UPS to charge; Check LCD for error codes.
Short backup time	Overload; Batteries need replacement	Reduce connected load; Perform battery test and replace if necessary.
Software not communicating with UPS	Incorrect cable; Driver issue; Software settings	Ensure correct USB/RS232 cable is used; Reinstall drivers; Check software communication settings.

8. SPECIFICATIONS

Feature	Specification
Brand	NJOY
Model Number	UPOL-OL200EP-CG01B_SIL
Product Type	Tower UPS
Technology	Online (VFI) Double Conversion
Power Capacity	2000 VA / 1600 W
Output Power Factor	0.8
Input Nominal Voltage	230 V AC
Input Voltage Range	80 – 300 V AC
Input Frequency	50 Hz / 60 Hz (auto-sensing)
Output Nominal Voltage	208/220/230/240 V AC
Output Waveform	Pure Sine Wave
Outlets	4 x Schuko
Batteries	4 x 12V7Ah Sealed Lead-Acid (internal)
Efficiency	Up to 96%
Display	LCD
Communication Ports	RS232, HID USB, EPO, SNMP Slot (optional card)
Noise Level	<40 dB
Compatible Devices	Gaming Computers, DVRs, Video Surveillance Systems, WiFi/ADSL/Fiber Modems, Monitors, Printers, TVs, NAS, Servers

TEMPO DI AUTONOMIA



Figure 8.1: Runtime autonomy chart for the NJOY Echo Pro 2000 UPS. This chart illustrates the approximate backup duration at different load levels. For example, at 1600W (100% load), the runtime is approximately 1 minute, while at 400W (25% load), it is approximately 17 minutes.

9. WARRANTY INFORMATION

For detailed warranty terms and conditions, please refer to the warranty card included with your product or visit the official NJOY website. Keep your proof of purchase for warranty claims.

10. SUPPORT

If you require technical assistance or have questions regarding your NJOY Echo Pro 2000 UPS, please contact NJOY customer support through their official website or the contact information provided in your product documentation.