

Manuals+

[Q & A](#) | [Deep Search](#) | [Upload](#)

Manuals.plus /

› [Walker](#) /

› Walker Ultra 70419 Catalytic Converter Instruction Manual

Walker 70419

Walker Ultra 70419 Catalytic Converter Instruction Manual

MODEL: 70419

Brand: Walker

1. Introduction

The Walker® Ultra 70419 catalytic converter is engineered for reliable performance and regulatory compliance. Crafted to meet EPA standards for OBDII vehicles, this catalytic converter features a robust stainless-steel body designed for strength and longevity. Its direct-fit design simplifies installation, ensuring seamless integration into existing exhaust systems without the need for cutting or welding. This automotive replacement catalytic converter supports optimal exhaust performance while maintaining strict emissions standards. Walker® Ultra converters are built to withstand demanding conditions, providing a dependable solution that combines durability, compliance, and ease of use.

2. Safety Information

- Always wear appropriate personal protective equipment (PPE), including safety glasses and gloves, when handling and installing automotive parts.
- Ensure the vehicle is securely supported on jack stands or a lift before working underneath it. Never rely solely on a jack.
- Allow the exhaust system to cool completely before beginning installation to prevent burns.
- Work in a well-ventilated area to avoid exposure to exhaust fumes.
- Refer to your vehicle's service manual for specific torque specifications and additional safety precautions.

3. Package Contents

Verify that all components are present before beginning installation:

- Walker Ultra 70419 Catalytic Converter assembly
- Gaskets (if included with the specific kit)
- Mounting hardware (if included with the specific kit)

If any parts are missing or damaged, do not proceed with installation. Contact your supplier for assistance.

4. Setup and Installation

The Walker Ultra 70419 catalytic converter features a direct-fit design for straightforward installation. No cutting or welding is typically required for compatible vehicles.

1. **Preparation:** Park the vehicle on a level surface and engage the parking brake. Raise the vehicle safely using a lift or jack stands. Allow the exhaust system to cool completely.
2. **Removal of Old Converter:** Locate the existing catalytic converter. Remove the bolts securing the old converter to the exhaust manifold and the downstream exhaust pipe. Carefully detach the old converter, ensuring all old gaskets are removed.
3. **Installation of New Converter:** Position the new Walker Ultra 70419 catalytic converter into place. Ensure proper alignment with the exhaust manifold (3-bolt flange inlet) and the downstream exhaust pipe (2-bolt flange outlet).
4. **Secure Fasteners:** Install new gaskets (if applicable) and secure the converter using the appropriate bolts and nuts. Tighten all fasteners to the vehicle manufacturer's recommended torque specifications.
5. **Final Check:** Inspect all connections for proper fit and tightness. Ensure there is adequate clearance around the converter and exhaust system components.

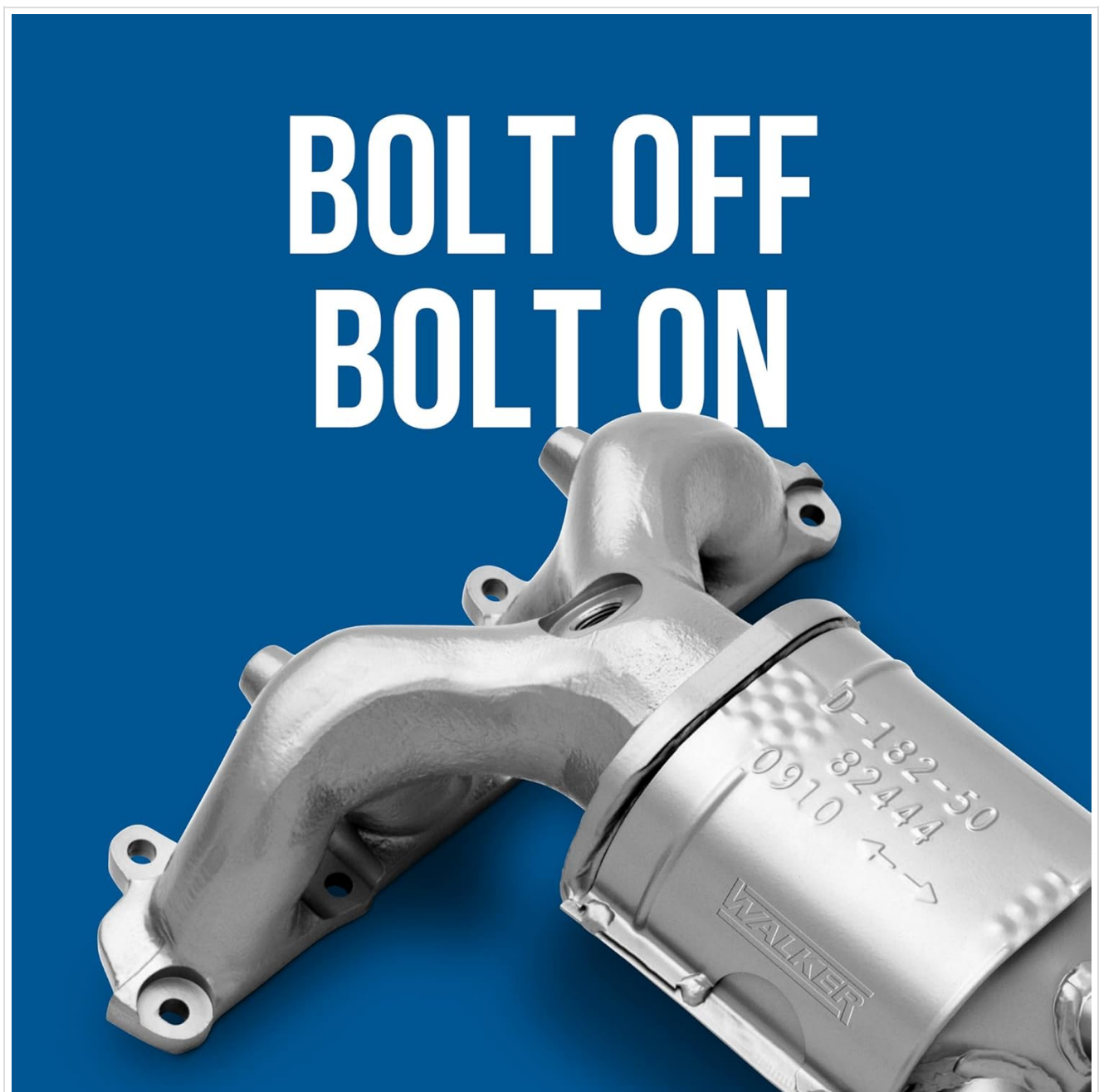


Image: The Walker Ultra 70419 is designed for a direct bolt-on installation, simplifying the replacement process.



Image: Vehicle-designed and tested for precision fit and finish, ensuring proper alignment and function.

5. Operation

The Walker Ultra 70419 catalytic converter is designed to convert harmful pollutants in exhaust gases into less toxic substances. It is EPA compliant and approved for use on OBDII vehicles, ensuring adherence to federal emissions standards.

- **No Break-In Required:** This converter is ready to operate immediately after installation, featuring an application-specific converter shell design and mat compression.
- **Optimal Washcoat Technology:** The advanced washcoat technology helps maintain optimal emissions performance, preventing the illumination of the check engine light due to emissions codes.
- **Durable Construction:** The robust stainless-steel body ensures enhanced durability and longevity, even under demanding automotive conditions.

NO BREAK-IN REQUIRED

Ready to operate with application-specific
converter shell design and mat compression

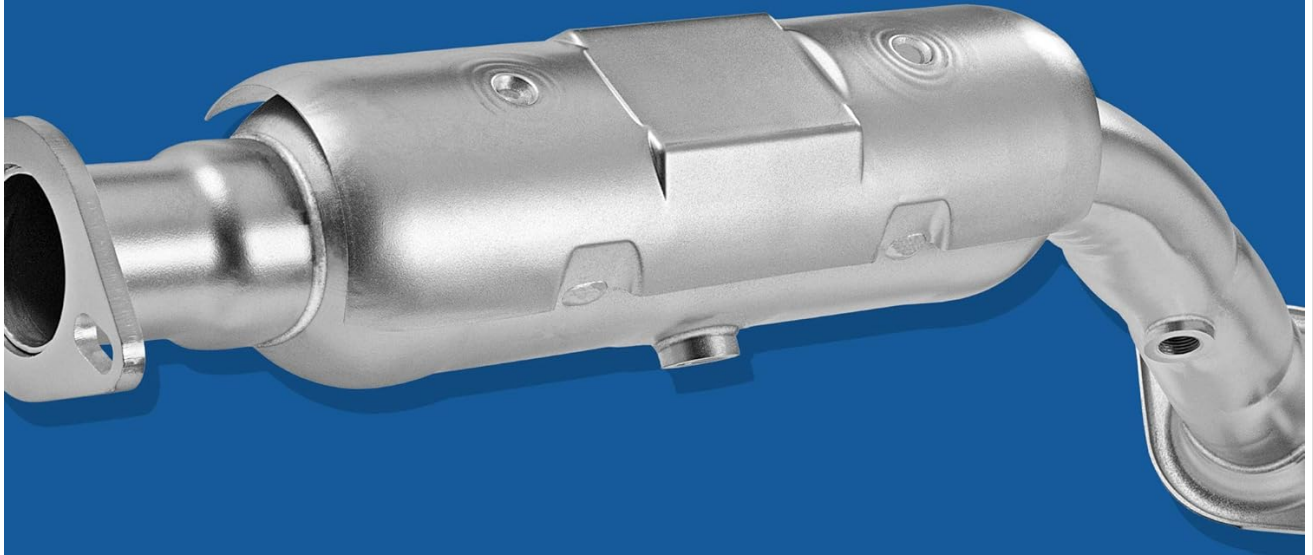


Image: The converter's design allows for immediate operation without a break-in period.

KEEPS THE

CHECK ENGINE LIGHT OFF

Optimal washcoat technology keeps
the check engine light off for emissions codes

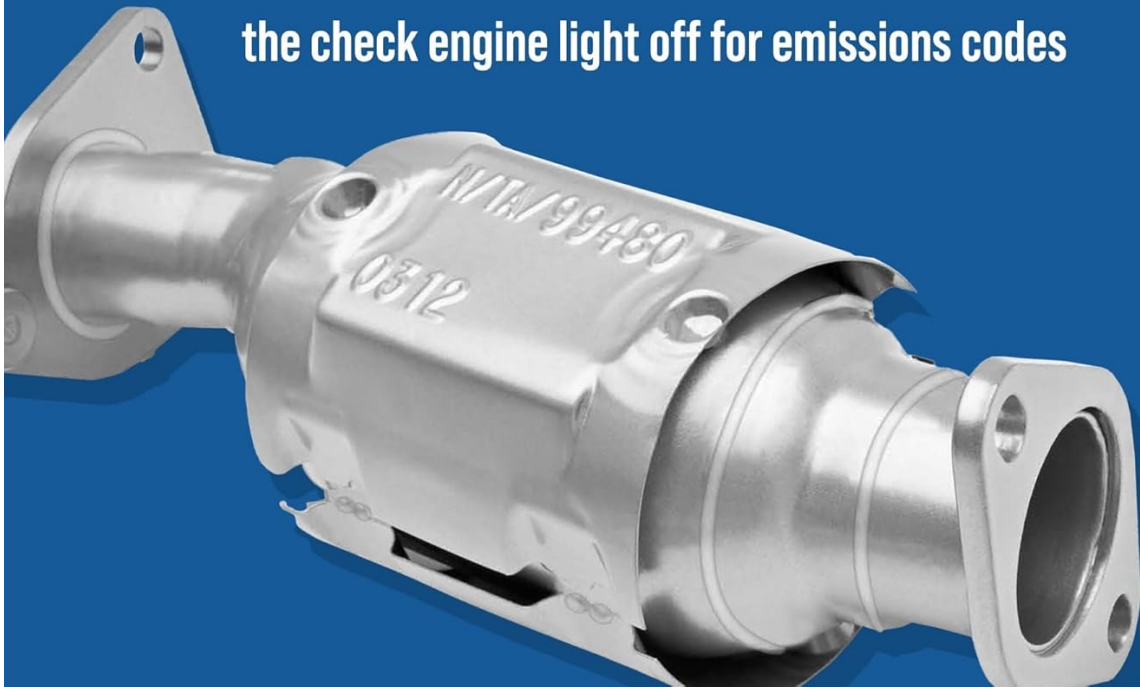


Image: Optimal washcoat technology helps prevent the check engine light from illuminating due to emissions-related issues.



Designed for use on OBDII vehicles, 1996 & newer. Not legal for sale or use in California, Colorado, or New York. Legal in Maine on EPA Federal Emission Equipped Vehicles only. Consult your state's aftermarket converter regulations for details.

Image: The Walker Ultra 70419 is EPA Compliant, designed for use on OBDII vehicles 1996 & newer. Note: Not legal for sale or use in California, Colorado, or New York. Legal in Maine on EPA Federal Emission Equipped Vehicles only. Consult your state's aftermarket converter regulations for details.

6. Maintenance

Catalytic converters are generally maintenance-free components. However, proper vehicle maintenance is crucial for their longevity and efficient operation:

- Ensure your engine is running efficiently. Misfires, rich fuel mixtures, or excessive oil consumption can damage the catalytic converter.
- Regularly check and replace spark plugs, oxygen sensors, and fuel injectors as recommended by your vehicle manufacturer.
- Address any engine warning lights promptly to prevent potential damage to the emissions system.

7. Troubleshooting

If you experience issues after installing the catalytic converter, consider the following:

- **Check Engine Light (CEL) On:** If the CEL illuminates after installation, it may indicate an issue with the oxygen sensors, a leak in the exhaust system, or an underlying engine problem. Use an OBDII scanner to retrieve diagnostic trouble codes (DTCs) and address the root cause.

- **Exhaust Leaks:** Listen for hissing or puffing sounds, which may indicate a leak at the flange connections. Retighten bolts or replace gaskets if necessary.
- **Rattling Noise:** A rattling sound from the converter could indicate internal damage. This is rare for new converters but can occur if the unit was mishandled or if there's an underlying engine issue causing excessive heat.

For persistent issues, consult a qualified automotive technician.

8. Specifications

Specification	Detail
Model Number	70419
Brand	Walker
Manufacturer	DRiV Incorporated
Inlet Flange Type	3-Bolt
Outlet Flange Type	2-Bolt
Compliance	EPA Compliant (for OBDII vehicles)
Construction Material	Stainless Steel
Item Weight	6.19 kg
Parcel Dimensions	118.11 x 34.29 x 15.24 cm

9. Warranty and Support

For warranty information and technical support, please refer to the official Walker website or contact your authorized dealer. Keep your purchase receipt as proof of purchase.