



[Manuals.plus](#) /

> [pearlstar](#) /

> [pearlstar 16-Pack Solar Step Lights Instruction Manual \(Model 588\)](#)

## pearlstar 588

# pearlstar 16-Pack Solar Step Lights Instruction Manual (Model 588)

Outdoor Waterproof LED Fence Lamp for Patios, Stairs, Gardens, Pathways, Balconies, and Fences

[Contents](#)   [Specifications](#)   [Setup](#)   [Operation](#)   [Maintenance](#)   [Troubleshooting](#)   [Warranty & Support](#)

[Introduction](#)   [Safety Information](#)   [Package](#)

## 1. INTRODUCTION

Thank you for choosing pearlstar Solar Step Lights. This manual provides detailed instructions for the proper installation, operation, and maintenance of your new solar lights. These lights are designed to provide ambient illumination and enhance safety for outdoor areas such as decks, stairs, fences, patios, and pathways. Please read this manual thoroughly before use to ensure optimal performance and longevity of your product.



Figure 1: pearlstar Solar Step Lights installed on a deck railing.

## 2. SAFETY INFORMATION

- Ensure the solar panel receives direct sunlight for at least 6-8 hours daily for optimal charging.
- Do not submerge the lights in water. While waterproof (IP44 rated), prolonged submersion can cause damage.
- Keep the solar panel clean from dirt, dust, and debris to maintain charging efficiency.
- Do not attempt to open or modify the internal components of the light, as this may void the warranty and cause damage.
- Install lights in locations where they will not be easily damaged by foot traffic or other activities.
- Dispose of batteries according to local regulations if replacement is ever needed.

## 3. PACKAGE CONTENTS

Your pearlstar Solar Step Lights package includes:

- 16 x pearlstar Solar Step Lights
- Screws (32x)
- Adhesive Tapes (16x)

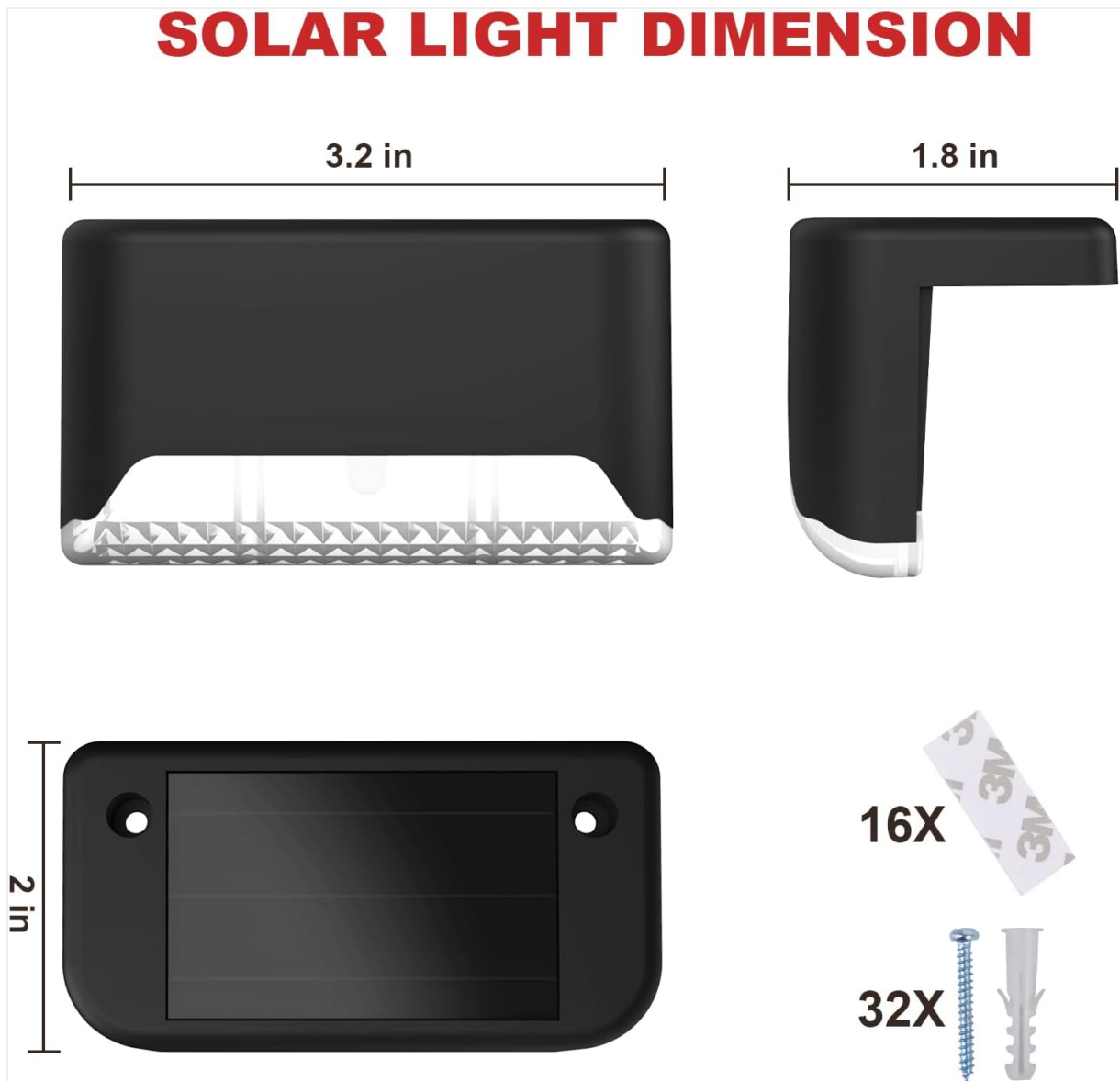


Figure 2: Product dimensions and included installation hardware.

#### 4. PRODUCT SPECIFICATIONS

<b>Brand</b>	pearlstar
<b>Model Name</b>	588 (HWL588.V0)
<b>Color</b>	Black
<b>Material</b>	Acrylonitrile Butadiene Styrene (ABS)
<b>Product Dimensions</b>	3.07"L x 1.65"W x 1.81"H
<b>Item Weight</b>	1.83 Pounds (for 16 lights)
<b>Power Source</b>	Solar Powered
<b>Light Source Type</b>	LED
<b>Light Color</b>	White

<b>Installation Type</b>	Wall Mount (Screws or Adhesive Tapes)
<b>Special Feature</b>	Waterproof (IP44)
<b>Switch Type</b>	Automatic (Dusk to Dawn Sensor)
<b>Recommended Use</b>	Outdoor use only (Fence, Stairs, Deck, Patio, Garden Pathway, Balcony)

## 5. SETUP AND INSTALLATION

### 5.1 Initial Activation

1. Carefully separate the transparent lid from the brown main body of the light.
2. Locate the ON/OFF switch inside the unit. Shift the button to the LEFT to turn on the light.
3. Reinstall the transparent lid securely onto the brown main body.



Figure 3: Steps for initial activation of the solar light.

### 5.2 Charging

Place the solar lights in a location where the solar panel can receive 6-8 hours of direct sunlight daily. This ensures the internal battery is fully charged for optimal performance at night.

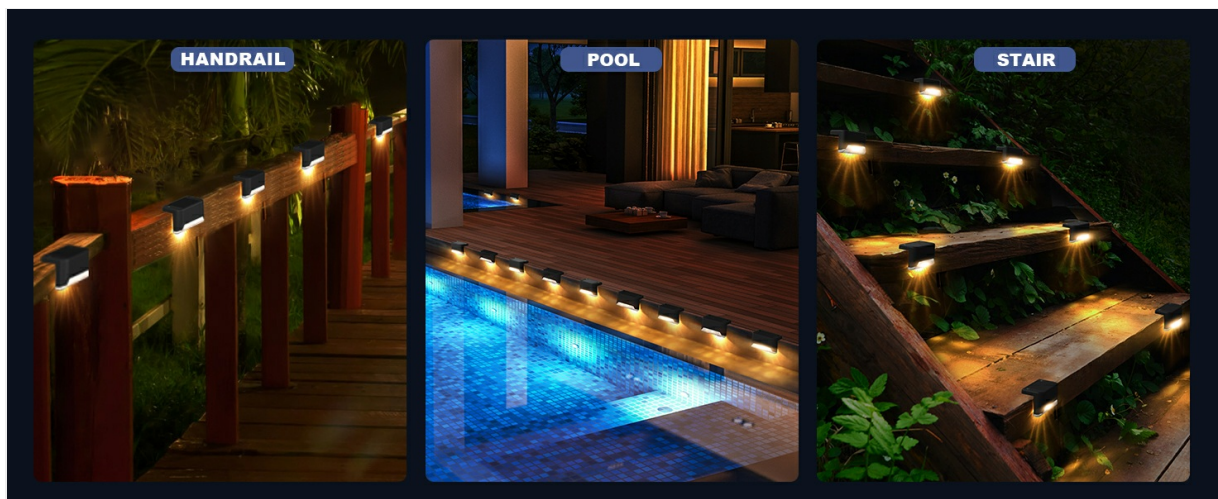


Figure 4: Solar lights charging during the day and illuminating at night.

### 5.3 Mounting Options

The pearlstar Solar Step Lights offer two convenient installation methods:

1. **Adhesive Tapes:** For surfaces where drilling is not desired, use the provided adhesive tapes. Ensure the surface is clean and dry before applying the tape to the back of the light and pressing firmly onto the desired location.

2. **Screws:** For a more permanent installation, use the included screws and anchors.

- Mark the desired installation points for the screws.
- Drill two pilot holes at the marked locations.
- Insert the plastic anchors into the pilot holes (if installing into masonry or similar materials).
- Align the light with the holes and secure it with the screws.

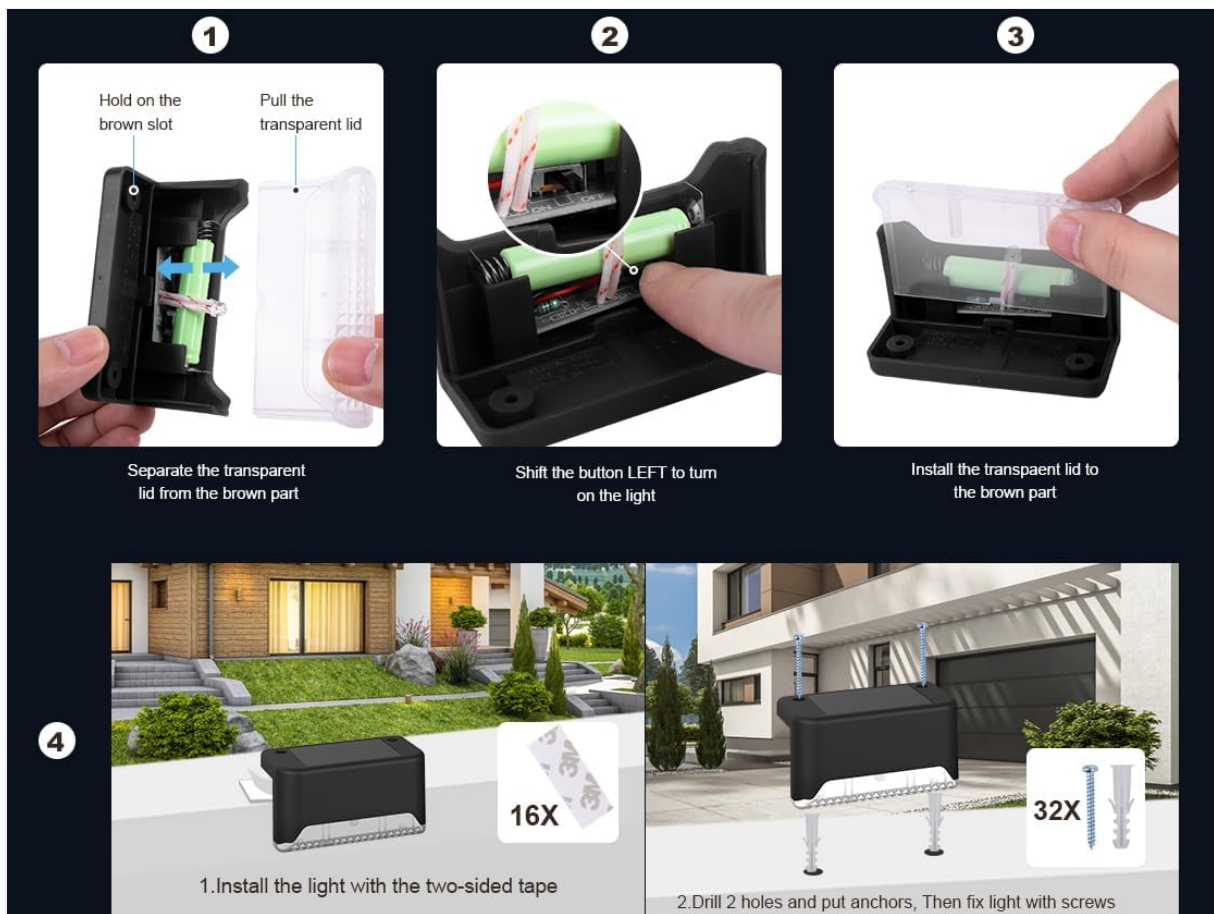


Figure 5: Installation methods using adhesive tape or screws.

These lights are versatile and can be installed on various outdoor structures, including fences, deck railings, and stair risers.

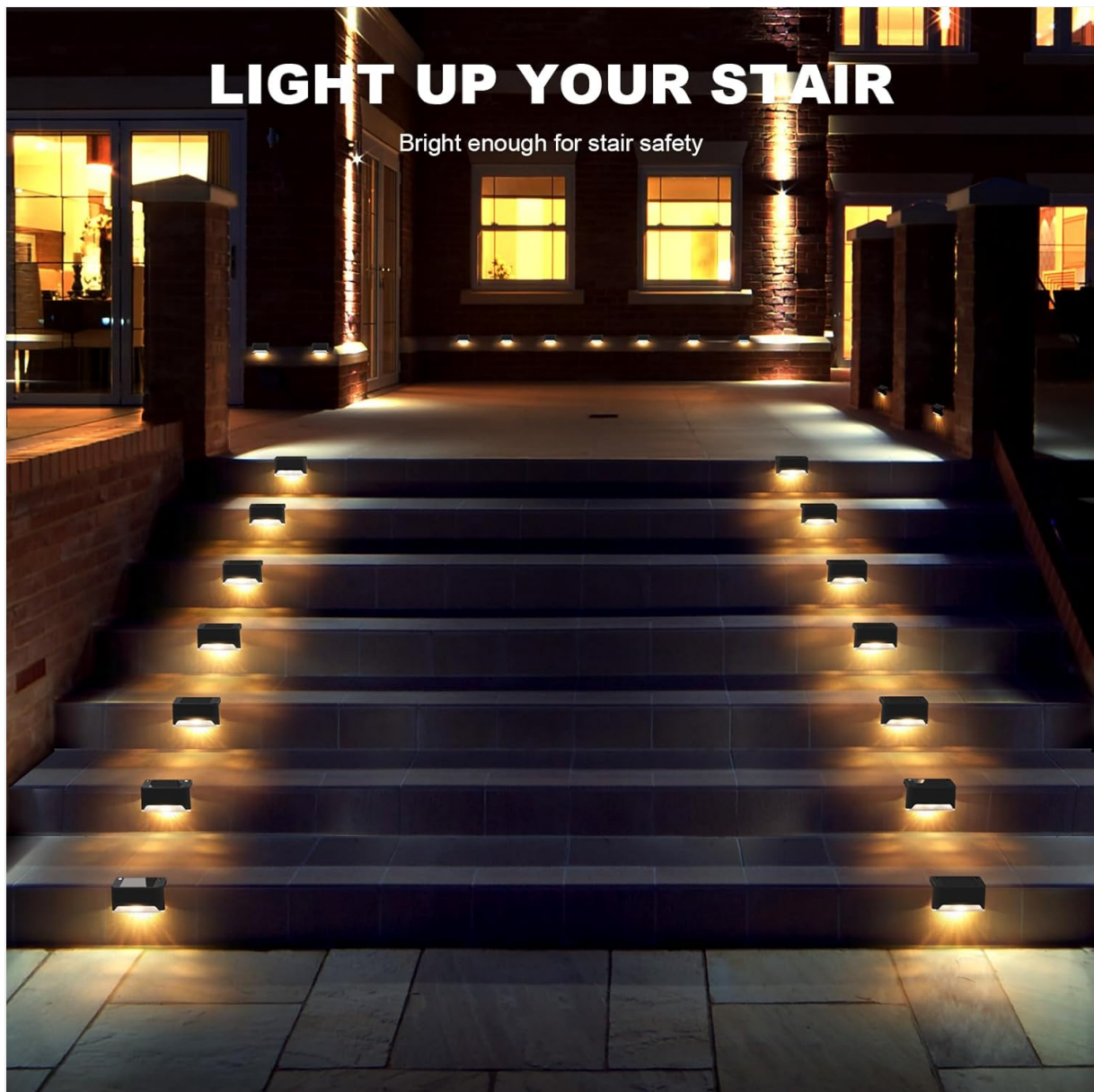


Figure 6: Examples of solar step lights in different outdoor applications.

## 6. OPERATION

The pearlstar Solar Step Lights are equipped with a dusk-to-dawn sensor for automatic operation. Once activated (as per Section 5.1) and sufficiently charged, the lights will:

- Automatically turn on at dusk when ambient light levels decrease.
- Provide illumination throughout the night.
- Automatically turn off at dawn when ambient light levels increase, and begin recharging.

The brightness and duration of the light depend on the amount of sunlight received during the day. Ensure the solar panel is not obstructed by shadows from buildings, trees, or other objects.

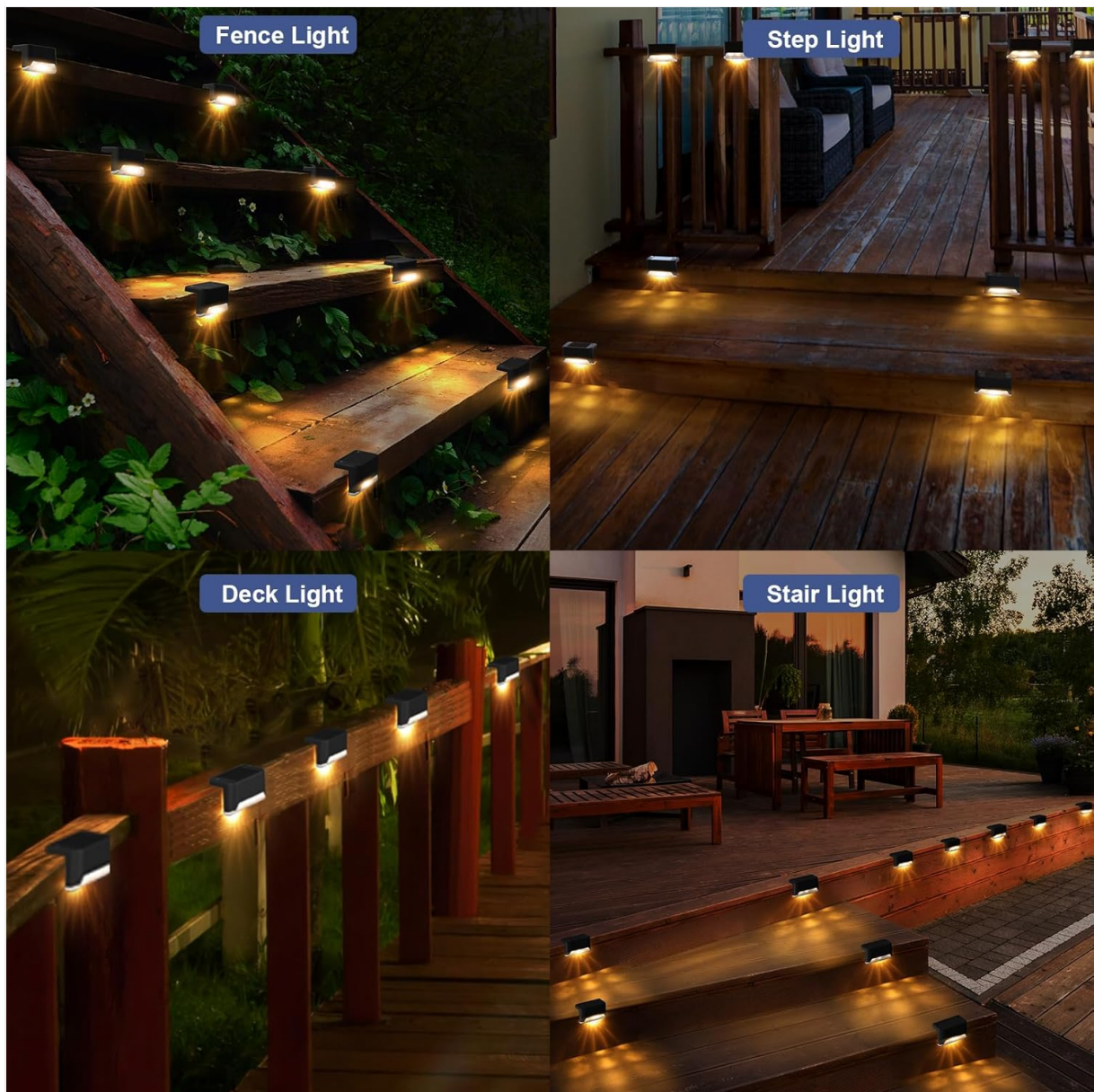


Figure 7: Solar step lights illuminating an outdoor staircase for enhanced safety.

## 7. MAINTENANCE

To ensure the long-term performance and efficiency of your solar lights, follow these maintenance guidelines:

- **Clean Solar Panels:** Regularly wipe the solar panels with a soft, damp cloth to remove dust, dirt, leaves, or snow. A clean panel ensures maximum sunlight absorption and charging efficiency.
- **Check Placement:** Periodically check that the lights are still in a location receiving adequate direct sunlight. Trim any overgrown vegetation that might be casting shadows.
- **Inspect for Damage:** Occasionally inspect the lights for any physical damage to the housing or solar panel. Although IP44 waterproof, severe weather can sometimes cause issues.
- **Battery Life:** The integrated battery is designed for long-term use. If the light duration significantly decreases over time, it may indicate the battery is nearing the end of its lifespan. Contact customer support for guidance on potential battery replacement, if applicable.

## 8. TROUBLESHOOTING

If your pearlstar Solar Step Lights are not functioning as expected, please refer to the following common issues and solutions:

<b>Problem</b>	<b>Possible Cause</b>	<b>Solution</b>
Light does not turn on at night.	<ul style="list-style-type: none"> <li>◦ Switch is OFF.</li> <li>◦ Insufficient sunlight for charging.</li> <li>◦ Solar panel is dirty or obstructed.</li> <li>◦ Battery is depleted or faulty.</li> </ul>	<ul style="list-style-type: none"> <li>◦ Ensure the internal switch is set to ON (refer to Section 5.1).</li> <li>◦ Relocate the light to an area with 6-8 hours of direct sunlight.</li> <li>◦ Clean the solar panel.</li> <li>◦ Allow several days for charging. If problem persists, contact support.</li> </ul>
Light is dim or only stays on for a short period.	<ul style="list-style-type: none"> <li>◦ Insufficient charging.</li> <li>◦ Solar panel is dirty.</li> <li>◦ Battery capacity reduced.</li> </ul>	<ul style="list-style-type: none"> <li>◦ Ensure optimal sunlight exposure.</li> <li>◦ Clean the solar panel.</li> <li>◦ If the issue persists after prolonged charging, the battery may need replacement. Contact support.</li> </ul>
Light flickers.	<ul style="list-style-type: none"> <li>◦ Loose connection.</li> <li>◦ Battery issue.</li> </ul>	<ul style="list-style-type: none"> <li>◦ Ensure the transparent lid is securely closed.</li> <li>◦ Allow for full charge. If problem persists, contact support.</li> </ul>

## 9. WARRANTY AND CUSTOMER SUPPORT

pearlstar is committed to providing high-quality products. If you encounter any issues with your Solar Step Lights, please do not hesitate to contact us. While specific warranty details are not provided in this manual, pearlstar aims to assist customers with product-related concerns.

For support, please refer to the contact information provided at the point of purchase or visit the official pearlstar website.