

avedio links 6121

avedio links 4K HDMI Video Capture Card User Manual

Model: 6121

1. INTRODUCTION

The avedio links 4K HDMI Video Capture Card (Model 6121) is designed for capturing high-quality video and audio from various HDMI sources. It supports 4K@60Hz HDMI passthrough and captures resolutions up to 1080p at 60 frames per second (FPS) via USB 3.0. This device is compatible with multiple operating systems and streaming software, making it suitable for gaming, live broadcasting, video recording, and conference recording.

2. PRODUCT OVERVIEW

The capture card features a durable aluminum alloy construction and offers essential ports for connectivity. It includes a USB 3.0 interface for high-speed data transfer and 3.5mm audio input/output ports for microphone and headphone connections.

4K@60Hz High Resolution

4K@60Hz High Resolution HDMI Loop-out



Image: The avedio links 4K HDMI Video Capture Card shown with its included USB and HDMI cables.



Microphone & headphone

Support microphone audio and HDMI audio superimpose capture



Image: A detailed diagram illustrating the USB capture port, HDMI input, HDMI output, and 3.5mm audio ports on the device.

Key Features:

- **4K HDMI Passthrough:** Supports 4K@60Hz HDMI 2.0 passthrough for high-resolution viewing.
- **HD Capture Resolutions:** Captures video up to 1080p at 60FPS via USB 3.0.
- **Audio Interface:** Integrated 3.5mm audio input for microphones and 3.5mm audio output for headphones.
- **Wide Compatibility:** Works with Windows, Mac OS, Linux, and popular streaming software like OBS, Twitch, YouTube, Potplayer, and VLC.
- **Plug and Play:** Easy setup with no complicated driver installation required.

3. SETUP INSTRUCTIONS

Follow these steps to connect your avedio links 4K HDMI Video Capture Card:

1. **Connect HDMI Input:** Use an HDMI cable to connect your video source (e.g., PS5, Xbox, Nintendo Switch, camera) to the HDMI INPUT port on the capture card.
2. **Connect HDMI Output (Optional):** If you wish to view your content on a separate display without latency, connect an HDMI cable from the HDMI OUTPUT port on the capture card to your monitor or TV.
3. **Connect to Computer:** Connect the USB 3.0 cable from the capture card to an available USB 3.0 port on your computer (USB-A or USB-C using the provided adapter).
4. **Connect Audio Devices (Optional):**
 - For microphone input, connect your 3.5mm microphone to the MIC port.
 - For headphone output, connect your 3.5mm headphones to the HEADPHONE port.
5. **Software Setup:** Open your preferred capture/streaming software (e.g., OBS Studio). Add a new source and select "Video Capture Device." Choose the avedio links capture card as your device. Adjust resolution and FPS settings as needed.

Video: A demonstration of connecting the avedio links capture card to a gaming setup and computer for streaming.

OBS Studio Configuration Steps:

1. **Step 1: Add Video Capture Device**

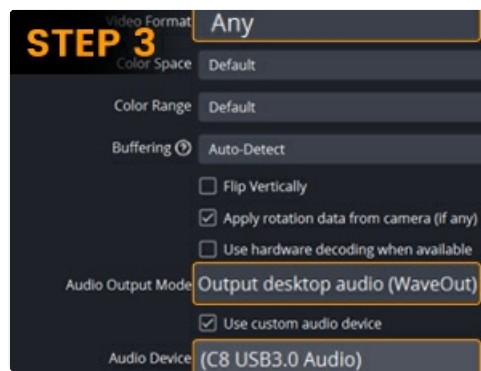


Image: In OBS Studio, click the '+' icon under 'Sources' and select 'Video Capture Device'.

2. Step 2: Configure Resolution/FPS



Image: Set 'Resolution/FPS Type' to 'Custom', then choose your desired resolution (e.g., 1920x1080) and FPS (e.g., 60).

3. Step 3: Configure Audio Output



USB2.0

Image: Under 'Audio Output Mode', select 'Output desktop audio (WaveOut)' and ensure 'Use custom audio device' is checked, selecting 'C8 USB3.0 Audio'.

4. Step 4: Start Recording/Streaming



Image: Click 'Start Recording' or 'Start Streaming' to begin your session.

4. OPERATING INSTRUCTIONS

Once connected, the Avedio Links capture card operates as a plug-and-play device. Your chosen software will detect it as a video and audio input source.

Video Capture:

- The device captures video at up to 1080p 60FPS. Ensure your software settings match this resolution for optimal quality.
- For 4K@60Hz passthrough, the HDMI output will display the original 4K signal on your monitor, allowing you to play games in full resolution while capturing at 1080p.



Capture card 1080p 60fps

Makes the live streaming, sharing and recording simple & fast.

Image: A gaming setup demonstrating 4K@60Hz HDMI loop-out to a monitor while capturing at 1080p.

Audio Management:

- The 3.5mm audio input allows you to connect an external microphone to record your voice alongside game audio.
- The 3.5mm audio output enables you to monitor game audio and your microphone input through headphones.

Video: An unboxing and overview of the avedio links capture card, highlighting its features and ease of use.

5. MAINTENANCE

To ensure the longevity and optimal performance of your avedio links capture card, follow these maintenance guidelines:

- **Cleaning:** Use a soft, dry cloth to wipe the exterior of the device. Avoid using liquid cleaners or abrasive materials.
- **Storage:** Store the capture card in a cool, dry place away from direct sunlight and extreme temperatures when not in use.
- **Cable Management:** Ensure all cables are connected securely and are not bent or kinked excessively to prevent damage.
- **Ventilation:** Do not block the ventilation openings on the device to prevent overheating.

6. TROUBLESHOOTING

If you encounter issues with your capture card, refer to the following common troubleshooting steps:

- **No Video Signal:**
 - Check all HDMI cable connections. Ensure they are securely plugged into the correct input/output ports.
 - Verify that your video source (console, camera) is powered on and outputting a signal.
 - Confirm that your capture software is correctly configured to detect the device and the selected resolution/FPS.
 - Try a different HDMI cable or port on your source device.
- **No Audio:**
 - Ensure your 3.5mm audio devices (microphone, headphones) are correctly plugged into the respective ports.
 - Check audio settings in your capture software to ensure the capture card's audio input is selected and not muted.
 - Verify that the audio output from your source device is enabled.
 - Some users have reported buzzing from the headphone output; try different headphones or cables.
- **Poor Video Quality/Lag:**

- Ensure the capture card is connected to a USB 3.0 port on your computer for optimal bandwidth. USB 2.0 may result in lower performance.
 - Check your computer's specifications. Video capture can be resource-intensive; ensure your CPU and RAM meet the requirements for your desired resolution and FPS.
 - Reduce the capture resolution or frame rate in your software settings.
 - Close unnecessary applications running in the background to free up system resources.
- **Device Not Recognized:**
 - Try connecting the capture card to a different USB port on your computer.
 - Restart your computer.
 - Ensure your operating system is up to date.

7. SPECIFICATIONS

Feature	Detail
Brand	avedio links
Model Name	6121
Hardware Interface	USB 3.0
Video Capture Resolution	1080p (up to 60FPS)
HDMI Passthrough	4K@60Hz (HDMI 2.0)
Operating System Compatibility	Windows 7/8/10/11, Mac OS, Linux
Audio Ports	3.5mm Microphone Input, 3.5mm Headphone Output
Item Weight	4.6 ounces
Package Dimensions	6.42 x 5.2 x 0.75 inches
Material	Aluminum Alloy

8. WARRANTY AND SUPPORT

For warranty information and technical support, please refer to the documentation included with your product or visit the official avedio links website. Keep your purchase receipt for warranty claims.

If you require further assistance, please contact avedio links customer service through their official channels.