

Armorcope CA48

Armorcope CA48 2K HD Pan/Tilt Pet Camera User Manual

Model: CA48

1. INTRODUCTION

Thank you for choosing the Armorcope CA48 2K HD Pan/Tilt Pet Camera. This manual provides detailed instructions for setting up, operating, and maintaining your camera. Please read this manual thoroughly before use to ensure proper functionality and to maximize your experience with the product. This camera is designed to help you monitor your pets or babies with advanced features like 2K HD video, two-way audio, and night vision.

2. PRODUCT OVERVIEW

The Armorcope CA48 is a versatile 2K HD camera offering comprehensive surveillance for your home. Key features include:

- **2K HD Video Quality:** Provides clear and crisp live video and recordings.
- **355° Pan & 100° Tilt:** Offers wide-angle coverage of your space.
- **Two-Way Audio:** Communicate with your pets or family members remotely.
- **MagicPix Night Vision:** Clear monitoring even in low-light conditions up to 32 feet.
- **Smart Motion Detection & Auto Tracking:** Alerts you to activity and follows movement.
- **Local & Cloud Storage:** Flexible options for storing your video footage.



Image: The Armorcope CA48 2K HD Pan/Tilt Pet Camera, a white dome-shaped camera, shown next to a smartphone displaying a live feed of a baby and a dog. This illustrates the camera's primary use for monitoring both pets and infants.

3. PACKAGE CONTENTS

Please check the package contents upon unboxing. If any items are missing or damaged, contact customer support.

- Armorcope CA48 Pet Camera
- Power Adapter
- USB Cable
- Mounting Accessories (screws, wall anchors)
- User Manual

4. SETUP GUIDE

4.1 Camera Components

Recording and Playback

Support cloud service and SD card storage

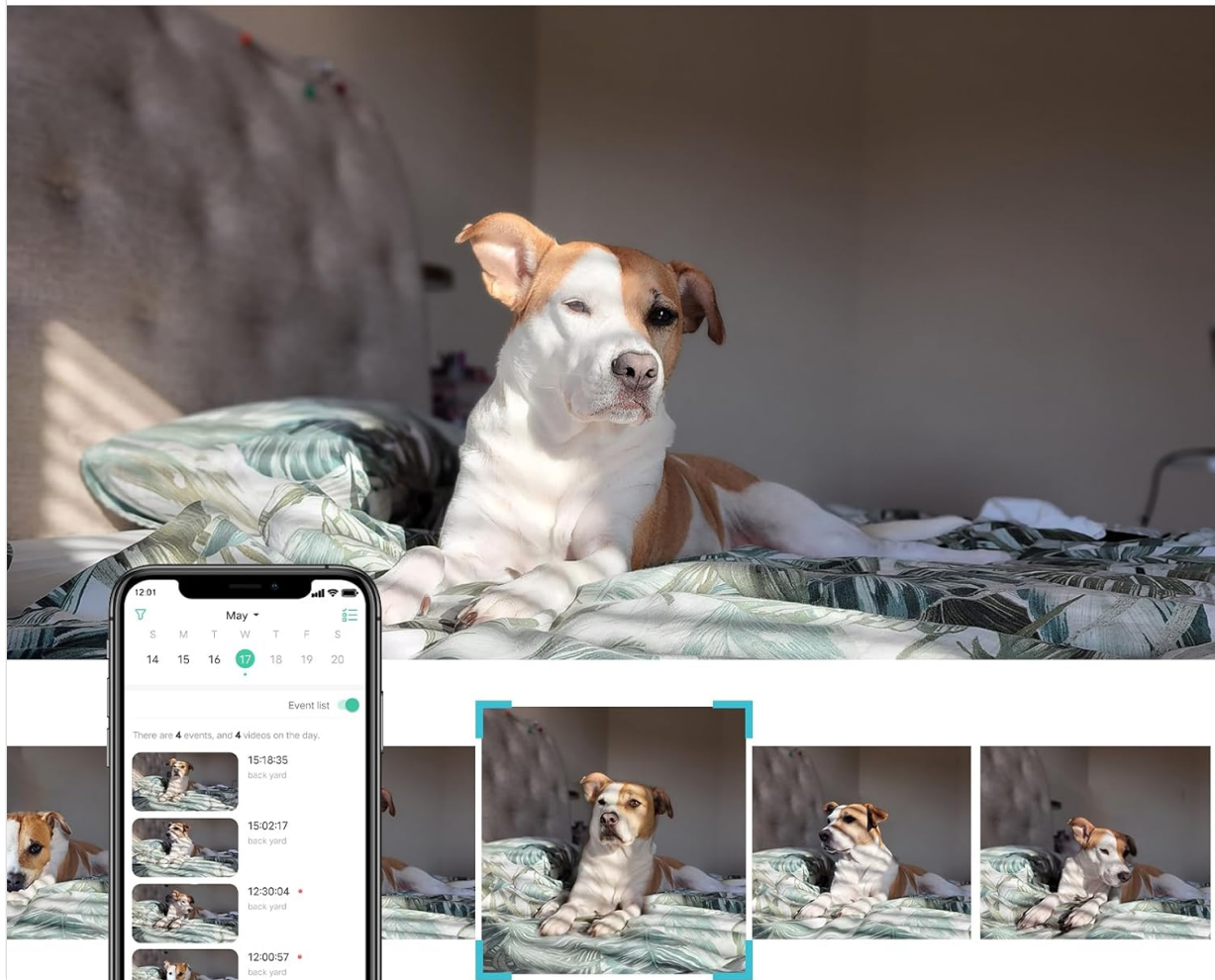


Image: A detailed diagram of the Armorcope CA48 camera highlighting its key components: Infrared Light, Lens, Microphone, Micro-SD Card Slot, Reset Button, and Call Key. This visual aid helps users identify different parts of the camera.

4.2 Initial Setup

1. **Download the App:** Search for the official Armorcope app (or specified app name in packaging) on your smartphone's app store (iOS or Android) and install it.
2. **Create an Account:** Open the app and register for a new account or log in if you already have one.
3. **Power On the Camera:** Connect the camera to a power source using the provided USB cable and power adapter. The camera will power on and typically indicate its status with an LED light.
4. **Add Device:** In the app, tap the "Add Device" or "+" icon. Follow the on-screen instructions to select your camera model.
5. **Connect to Wi-Fi:** Ensure your smartphone is connected to a 2.4GHz Wi-Fi network. The camera only supports 2.4GHz Wi-Fi (5G networks are not supported). Enter your Wi-Fi password into the app.
6. **Pairing Process:** The app will guide you through the pairing process, which usually involves scanning a QR code displayed on your phone with the camera's lens or listening for an audible pairing signal.
7. **Placement:** Position the camera in a location that provides the desired viewing angle. The camera can be placed on a flat surface or mounted to a wall or ceiling using the included accessories.
8. **Insert Micro-SD Card (Optional):** If you wish to use local storage, gently insert a Micro-SD card (up to 128GB, not included) into the Micro-SD card slot. Ensure the camera is powered off before

inserting or removing the card.

5. OPERATING INSTRUCTIONS

5.1 Live View

Once the camera is successfully connected, you can access the live video feed through the app. This allows you to monitor your space in real-time from anywhere.

5.2 Pan/Tilt Control

The camera offers a wide field of view with its pan and tilt capabilities. Use the directional controls within the app to remotely adjust the camera's viewing angle.

- **Pan:** Rotate the camera horizontally up to 355°.
- **Tilt:** Adjust the camera vertically up to 100°.

Remotely Pan/Tilt Control, Pan 355° Tilt 100



Image: The Armorcope CA48 camera demonstrating its remote pan (355°) and tilt (100°) control. The image shows a comparison between 1080P and 2K resolution, highlighting the camera's high-definition capabilities, with a small dog visible in the background.

5.3 Two-Way Audio

The built-in microphone and speaker allow for two-way communication. Tap the microphone icon in the app

to speak through the camera, and listen to audio from the camera's surroundings.

Two-way Audio

Timely communication, accompany your love anywhere anytime.



Image: The Armorcope CA48 camera illustrating its two-way audio feature. A dog is shown with a speech bubble indicating communication, and a smartphone displays the live feed, emphasizing timely communication with pets.

5.4 Motion Detection & Alerts

Enable motion detection in the app settings to receive real-time alerts on your phone when movement is detected. The camera can also be set to automatically track detected motion.

Motion Detection Alert

Real-time alert notifications sent to your phone, check what is going on instantly.

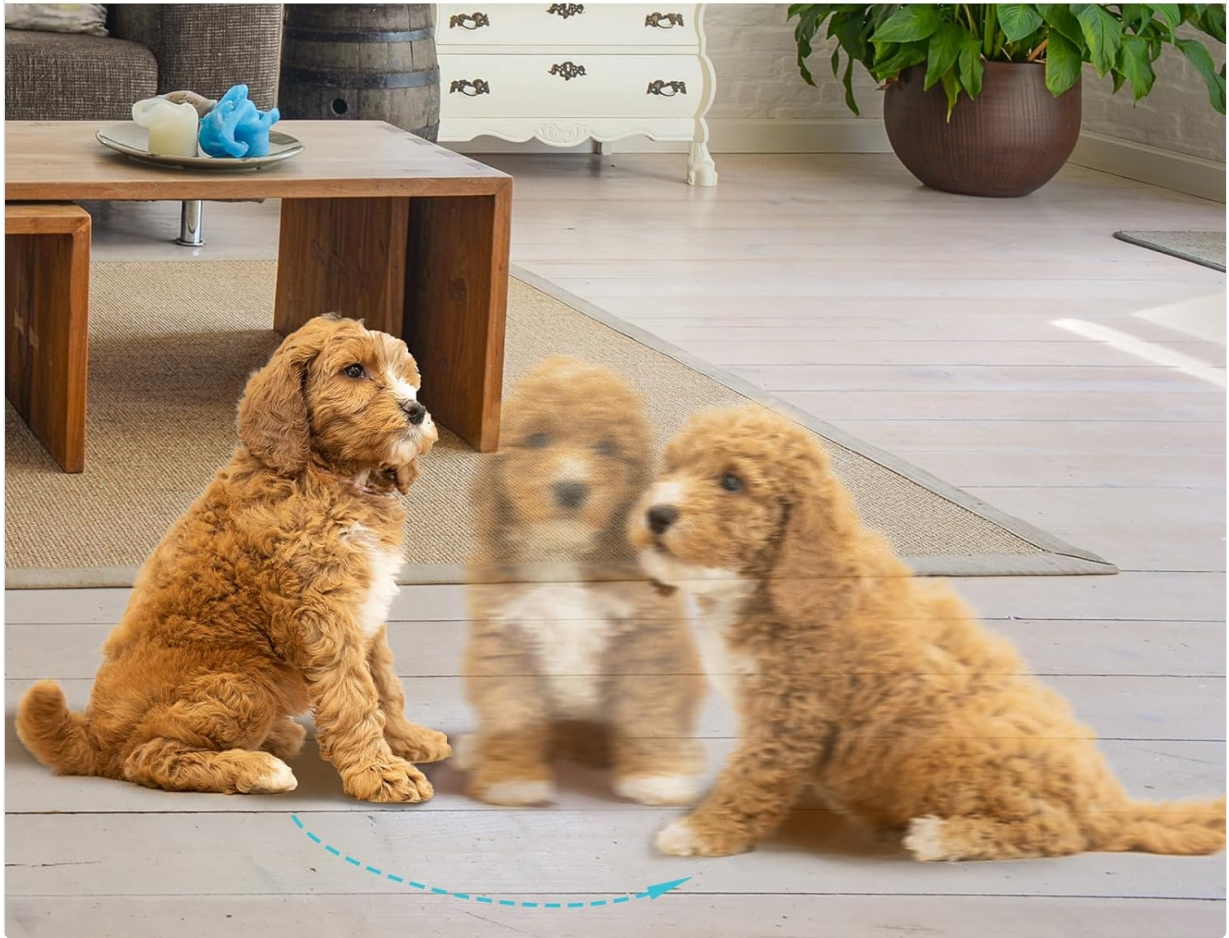


Image: The Armorcope CA48 camera demonstrating its motion detection alert feature. Two puppies are shown in motion, with a blurred effect indicating movement, and a text overlay explains that real-time alerts are sent to your phone.

5.5 MagicPix Night Vision

The camera automatically switches to night vision mode in low-light conditions, providing clear black-and-white video up to 32 feet. This ensures continuous monitoring day and night.



Enhanced Night Vision

Infrared light night vision up to 32ft, even in pitch dark



Image: The Armorcope CA48 camera showcasing its enhanced night vision capabilities. A dog is seen sleeping in a dimly lit room, with the camera providing a clear view, and text indicating infrared night vision up to 32 feet in pitch dark.

5.6 Recording and Playback

The camera supports both cloud storage (with a free 3-day video cycle) and local storage via a Micro-SD card (up to 128GB). You can review recorded footage through the app's playback function.



Image: The Armorcope CA48 camera's recording and playback feature. A dog is shown on a bed, and a smartphone screen displays a calendar with recorded events and thumbnails of video clips, illustrating how users can access past footage.

5.7 One-Click Call

The camera features a physical call button. When pressed, it can initiate a call or send a notification to your linked smartphone, allowing for quick communication.



Image: The Armorcope CA48 camera demonstrating its one-click call feature. A baby's hand is shown pressing the call button on the camera, with a speech bubble indicating "Mom, I miss you," highlighting the ease of initiating contact.

6. MAINTENANCE

- **Cleaning:** Use a soft, dry cloth to clean the camera lens and body. Avoid using harsh chemicals or abrasive cleaners.
- **Firmware Updates:** Regularly check the app for available firmware updates. Keeping your camera's firmware up-to-date ensures optimal performance and security.
- **Power Cycle:** If the camera experiences issues, try unplugging it from the power source for a few seconds and then plugging it back in.

7. TROUBLESHOOTING

Camera not connecting to Wi-Fi:

Ensure your Wi-Fi network is 2.4GHz. The camera does not support 5GHz Wi-Fi. Check your Wi-Fi password for accuracy. Move the camera closer to your Wi-Fi router. Reset the camera using the reset button and try the setup process again.

No video feed or offline status:

Check if the camera is powered on. Verify your Wi-Fi connection is stable. Restart the camera and your router. Ensure the app is updated to the latest version.

Motion detection alerts not working:

Ensure motion detection is enabled in the app settings. Check the sensitivity settings; adjust if necessary. Verify that app notifications are enabled on your smartphone.

Night vision is unclear:

Ensure there are no obstructions in front of the camera lens. Clean the lens if it's dirty. Avoid placing the camera directly facing a strong light source at night.

Two-way audio issues:

Check the volume settings on your smartphone and within the app. Ensure the camera's microphone and speaker are not obstructed. Verify your internet connection speed.

8. SPECIFICATIONS

Feature	Specification
Model Number	CA48
Form Factor	Dome
Video Resolution	2K
Pan Range	355°
Tilt Range	100°
Night Vision Range	Up to 32 feet (9.8 meters)
Connectivity Technology	Wireless (Wi-Fi)
Wi-Fi Protocol	2.4 GHz (5 GHz not supported)
Power Source	Corded Electric
Power Consumption	3 Watts
Compatible Devices	Smartphone (Android, iOS)
Storage Options	Micro-SD Card (up to 128GB), Cloud Storage
Dimensions (L x W x H)	7.62 x 7.62 x 10.16 cm (3 x 3 x 4 inches)
Item Weight	281 grams

9. WARRANTY AND SUPPORT

For warranty information, please refer to the documentation included with your purchase or visit the official Armorcope website. Typically, products come with a limited manufacturer's warranty covering defects in materials and workmanship.

If you encounter any issues or have questions not covered in this manual, please contact Armorcope customer support through their official website or the contact information provided in your product

packaging. Please have your model number (CA48) and purchase details ready when contacting support.

© 2024 Armorcope. All rights reserved.