



Manuals.plus /

- › PARWIN PRO BEAUTY /
- › PARWIN PRO BEAUTY Air-Sonic Hair Dryer User Manual

## PARWIN PRO BEAUTY Prussian Blue-pro

# PARWIN PRO BEAUTY Air-Sonic Hair Dryer User Manual

Model: Prussian Blue-pro

## IMPORTANT SAFETY INFORMATION

---

Please read all instructions carefully before using this appliance. Failure to follow these instructions may result in electric shock, fire, or serious injury.

- Keep this appliance out of reach of children.
- Do not use this appliance while bathing or near water. Water and electricity are a dangerous combination.
- Always unplug the appliance immediately after use.
- Keep the power plug and cord away from heated surfaces.
- Do not operate any appliance with a damaged cord or plug, or if the appliance malfunctions or has been dropped or damaged in any manner.
- Ensure the voltage of your power outlet matches the appliance's requirement (120 volts AC).

## PRODUCT OVERVIEW

---

The PARWIN PRO BEAUTY Air-Sonic Hair Dryer is a high-performance styling tool designed for efficient and healthy hair drying. It features a powerful motor, intelligent temperature control, and ionic technology to minimize heat damage and enhance hair health.



Image: The PARWIN PRO BEAUTY Air-Sonic Hair Dryer shown with its main body, two auto-wrap curlers, a smoothing nozzle, and a diffuser attachment.

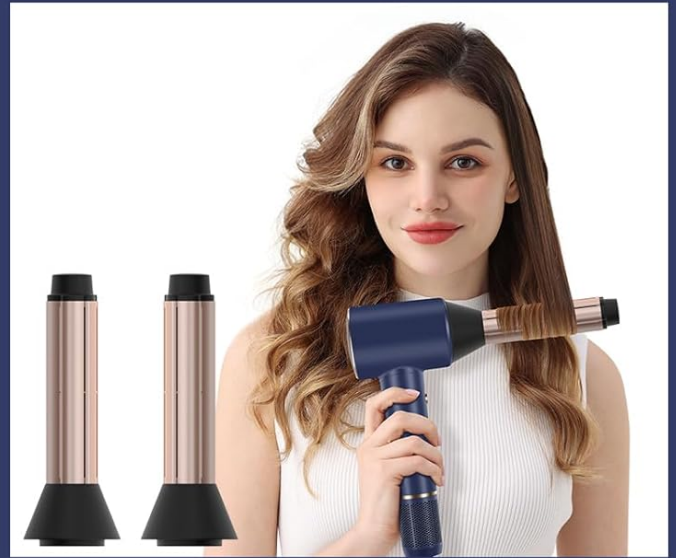
### Key Components and Features:

- **Main Unit:** Lightweight design with integrated controls and HD-LED display.
- **110,000 RPM Brushless Motor:** Delivers high-velocity airflow for ultra-fast drying.
- **HD Digital Display:** Clearly shows selected mode (COOL, CARE, DRY) and wind speed.
- **Temperature Control Technology:** Monitors air temperature 100 times per second to prevent extreme heat damage.
- **Negative Ion Technology:** Generates 200 million negative ions to reduce frizz and enhance shine.
- **Magnetic Attachments:** Easily attachable and detachable for versatile styling.



### High-speed Hair Dryer

Ultra-fast drying within 5 Minutes



### 2x32mm AUTO Wrap Hair Culers

Coanda auto-wrap curls in different directions



### Smoothing Magnetic Nozzle

For smoothie styling



### Diffuser Nozzle

For curly styling & volumizing

Image: A collage demonstrating the hair dryer's versatility. Top left shows the high-speed drying, top right shows the auto-wrap curlers, bottom left shows the smoothing nozzle, and bottom right shows the diffuser nozzle.

## SETUP

- Unpacking:** Carefully remove the hair dryer and all accessories from the packaging. Retain packaging for future storage or transport.
- Power Connection:** Ensure your power outlet is 120V AC. Insert the ALCI safety plug firmly into the electrical outlet. The ALCI plug is designed for safety and should be tested before each use.
- Attachment Selection:** Choose the desired magnetic attachment (auto-wrap curlers, smoothing nozzle, or diffuser) and align it with the front of the hair dryer. The magnetic connection will secure it in place.

## OPERATING INSTRUCTIONS

### Powering On and Off:

- To turn on the hair dryer, press the power button located on the handle.
- To turn off the hair dryer, press the power button again.

## Adjusting Modes and Wind Speed:

The hair dryer features an HD-LED display that shows the current mode and wind speed. There are three hair-blowing modes and two wind speed settings.

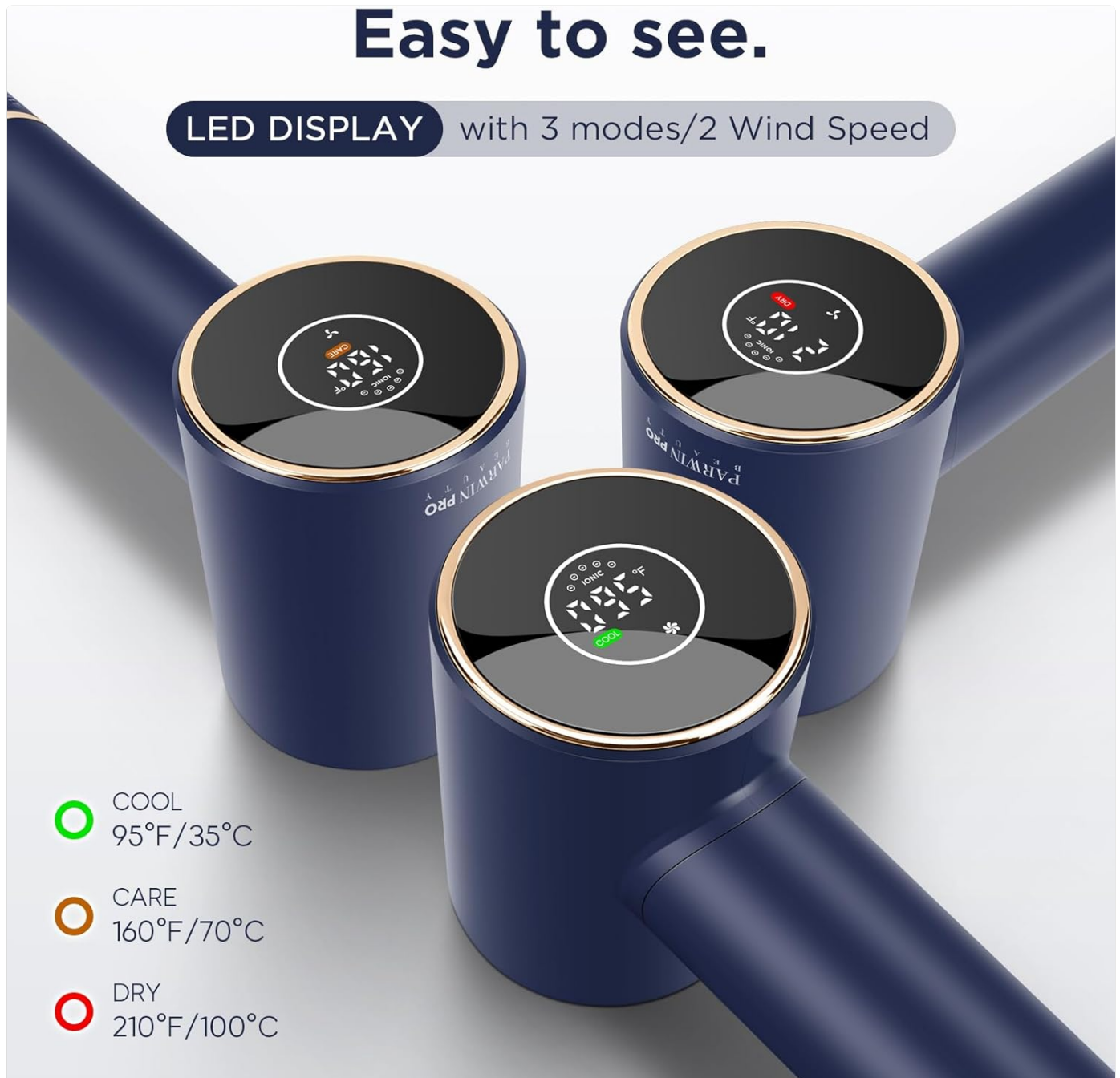


Image: Close-up of the hair dryer's HD-LED display, illustrating the three temperature modes: COOL (95°F/35°C), CARE (160°F/70°C), and DRY (210°F/100°C).

- **Temperature Modes:** Press the heating button to cycle through the three modes:
  - **COOL Mode (95°F/35°C):** For setting styles and finishing.
  - **CARE Mode (160°F/70°C):** For gentle drying and maintaining hair softness and shine, utilizing negative ions.
  - **DRY Mode (210°F/100°C):** For fast drying.
- **Wind Speed Settings:** Use the wind speed button to select between two intensity levels for customized drying.

## Using Attachments:

- **Auto-Wrap Curlers (2x32mm Left & Right):**

These attachments utilize the Coanda effect to automatically wrap hair around the barrel, creating curls without extreme heat. Use the left curler for clockwise curls and the right curler for anti-clockwise curls. For best results, use with the highest speed airflow and maximum temperature.



Image: Illustration of the Automatic Air-Absorption Technology with the auto-wrap curler, demonstrating how hair is drawn and wrapped to create voluminous, natural curls.

- **Smoothing Nozzle:** Directs airflow for smooth, sleek styling. Ideal for straightening hair or reducing frizz.
- **Diffuser:** Designed to evenly disperse airflow, enhancing natural curls and waves while adding volume. Best used on low speed and moderate heat.

## MAINTENANCE

Regular maintenance ensures optimal performance and extends the lifespan of your hair dryer.

1. **Cleaning the Air Filter:** The air inlet is located on the handle. Periodically check and clean the removable air filter to prevent dust and hair buildup, which can affect performance. Ensure the dryer is unplugged before cleaning.
2. **Cleaning Attachments:** Wipe attachments with a soft, damp cloth. Ensure they are completely dry before reattaching.
3. **Storage:** Store the hair dryer in a cool, dry place. Do not wrap the power cord tightly around the appliance, as this can

damage the cord.

## TROUBLESHOOTING

Problem	Possible Cause	Solution
Hair dryer does not turn on.	No power, ALCI plug tripped, or internal malfunction.	Check if the power cord is securely plugged into a working outlet. Press the "RESET" button on the ALCI safety plug. If the issue persists, contact customer service.
Weak airflow or overheating.	Blocked air inlet filter.	Unplug the dryer and clean the removable air filter on the handle. Ensure no hair or debris is obstructing the air intake.
Attachments do not stay on.	Improper alignment or magnetic surface obstruction.	Ensure the attachment is correctly aligned with the magnetic connection points. Clean the magnetic surfaces on both the dryer and the attachment.

## SPECIFICATIONS

Feature	Detail
Model	Prussian Blue-pro
Power Source	Electric
Wattage	1875W
Motor Speed	110,000 RPM Brushless Motor
Airflow Speed	Up to 25m/s
Negative Ion Output	200 Million
Temperature Control	Thermo-Control microprocessor (100 times/sec monitoring)
Dimensions (Approx.)	9.5cm/3.7in (length)
Weight (Approx.)	430g/0.95lb
Safety Certification	ETL Certified, ALCI Safety Plug



Image: A detailed diagram illustrating the dimensions of the hair dryer unit, the left and right auto-wrap curlers, the diffuser, and the smoothing nozzle.

## WARRANTY AND SUPPORT

The PARWIN PRO BEAUTY Air-Sonic Hair Dryer comes with a **12-month warranty** from the date of purchase.

For any product inquiries, technical support, or warranty claims, please contact our customer service team. We offer **24-hour friendly email customer service** to assist you.

Please refer to your purchase documentation for specific contact details or visit the official PARWIN PRO BEAUTY website for support information.