

## Yupiteru Y-3100

# Yupiteru marumie Y-3100 3-Camera Drive Recorder Instruction Manual

Model: Y-3100

Brand: Yupiteru

## 1. INTRODUCTION

---

Thank you for purchasing the Yupiteru marumie Y-3100 3-Camera Drive Recorder. This device is designed to provide comprehensive recording of your vehicle's surroundings, including front, rear, and interior/side views, enhancing safety and providing crucial evidence in case of incidents. Please read this manual thoroughly before use to ensure proper installation and operation.



The Yupiteru marumie Y-3100 drive recorder, featuring a compact main unit with a front camera and a separate rear camera module.

## 2. SETUP AND INSTALLATION

Proper installation is crucial for optimal performance. It is recommended to have this device installed by a professional.

### 2.1 Package Contents

- Main Unit (Front Camera)
- Rear Camera Module
- Power Cable
- 32GB microSD Card
- Mounting Bracket
- Instruction Manual (this document)
- Warranty Card

### 2.2 Mounting the Main Unit (Front Camera)

1. Clean the area on your windshield where the main unit will be mounted. Ensure it does not obstruct your view.
2. Attach the mounting bracket to the main unit.
3. Peel off the protective film from the adhesive pad on the bracket and firmly press it onto the chosen windshield location.
4. Adjust the front camera angle to ensure a clear view of the road ahead.

## 2.3 Mounting the Rear Camera Module

1. Identify a suitable location on your rear window that provides a clear view of the rear and interior/side.
2. Clean the chosen area thoroughly.
3. Attach the rear camera module using its adhesive pad.
4. Connect the rear camera module to the main unit using the provided cable. Route the cable neatly along the vehicle's trim to avoid interference.

## 2.4 Power Connection

1. Connect the power cable to the main unit.
2. Plug the other end of the power cable into your vehicle's 12V power outlet (cigarette lighter socket) or connect it to the vehicle's fuse box for parking surveillance functionality (professional installation recommended).

## 2.5 SD Card Insertion

1. Ensure the device is powered off.
2. Insert the provided 32GB microSD card into the SD card slot on the main unit until it clicks into place.
3. The Y-3100 features a maintenance-free SD card system, reducing the need for frequent manual formatting.

# 3. OPERATING INSTRUCTIONS

---

## 3.1 Power On/Off

- **Automatic Power On/Off:** The device will automatically power on and begin recording when the vehicle's ignition is turned on, and power off when the ignition is turned off.
- **Manual Power On/Off:** Press and hold the power button (if available) to manually turn the device on or off.

## 3.2 Recording Modes

- **Continuous Recording:** The device continuously records video in a loop. Older files are overwritten by new ones when the SD card is full.
- **Event Recording:** In the event of an impact or sudden braking, the device automatically saves the current recording segment as an event file, preventing it from being overwritten.
- **Parking Surveillance:** When the vehicle is parked, the device can detect impacts or motion and automatically record, providing protection even when you're away. This feature requires a constant power supply.

## 3.3 Playback

1. Access the menu on the device's 2.4-inch LCD screen.
2. Navigate to the playback section.

3. Select the desired video file (continuous, event, or parking) for review.

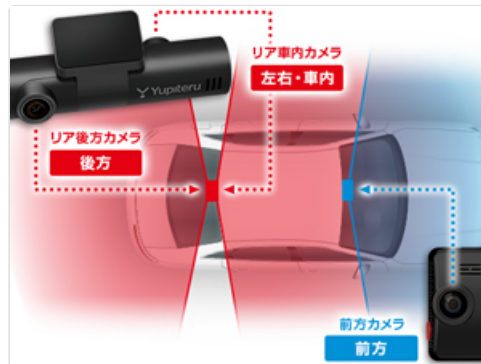
## 4. KEY FEATURES

---

### 4.1 3-Camera Recording

The Y-3100 provides comprehensive coverage with three cameras:

- **Front Camera:** Records the road ahead with a wide 162° angle.
- **Rear Camera:** Records the view behind the vehicle with a 162° angle.
- **Interior/Side Camera:** Records the vehicle's interior and side views with a 155° angle.



A visual representation of the Y-3100's comprehensive recording capabilities, illustrating the wide coverage from the front, rear, and interior/side cameras.

### 4.2 STARVIS Night Vision

Equipped with STARVIS technology, the Y-3100 ensures clear and vivid recordings even in low-light conditions or at night, capturing critical details that might otherwise be missed.



The STARVIS logo, highlighting the advanced sensor technology for clear video recording in low-light conditions.

### 4.3 HDR (High Dynamic Range)

The HDR feature balances exposure in scenes with high contrast, such as tunnels or bright sunlight, preventing overexposed bright areas and underexposed dark areas, resulting in clearer video footage.

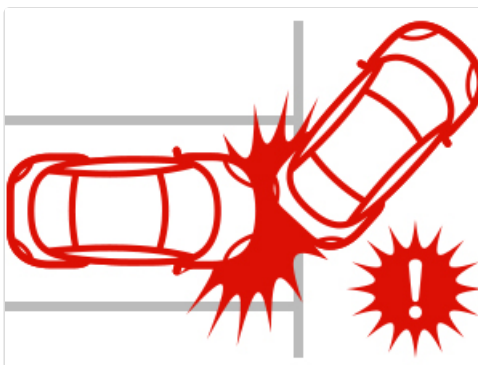
HDR あり



The HDR logo, signifying the High Dynamic Range feature that improves video quality in varying light conditions, preventing overexposure and underexposure.

#### 4.4 Parking Surveillance

With standard parking surveillance, the Y-3100 monitors your vehicle when parked. It automatically records if an impact is detected, providing security and peace of mind. An optional microwave sensor can further enhance detection capabilities.



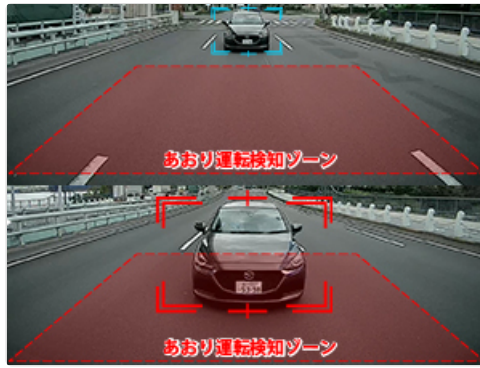
An icon illustrating the parking surveillance feature, which automatically records events when the vehicle is parked.



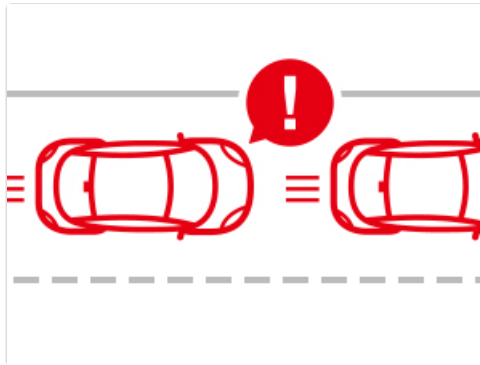
An image of the optional microwave sensor, which can be added to enhance the parking surveillance system's detection capabilities.

#### 4.5 ADAS (Advanced Driver-Assistance Systems)

The Y-3100 includes ADAS features to assist drivers, such as a rear approach warning system, which alerts you to vehicles approaching rapidly from behind.



An icon depicting the rear approach warning system, alerting the driver to vehicles approaching from behind.



An icon representing ADAS features, which provide various safety and assistance functions during driving.

## 4.6 SD Card Maintenance-Free

The Y-3100 utilizes a high-durability MLC (Multi-Level Cell) method for its included SD card, along with a unique system that minimizes fragmentation. This eliminates the need for regular manual formatting, ensuring reliable recording and reducing user hassle.



An icon showing that the SD card in the Y-3100 does not require periodic formatting, simplifying maintenance.

## 4.7 Video Demonstration

This video demonstrates the simultaneous recording from the front, rear, and interior cameras of the Yupiteru marumie Y-3100 drive recorder, showcasing its wide field of view and clear image quality in various driving conditions, including day and night.

# 5. MAINTENANCE

## 5.1 Cleaning the Lenses

Regularly clean the camera lenses with a soft, dry cloth to ensure clear recording quality. Avoid using abrasive cleaners or solvents.

## 5.2 SD Card Care

Although the Y-3100's SD card system is designed to be maintenance-free, it is good practice to occasionally check the card for any physical damage. If you experience any recording issues, try using a different high-quality microSD card.

## 6. TROUBLESHOOTING

- **Device not powering on:** Check the power cable connection and ensure your vehicle's 12V power outlet is functioning.
- **Recording issues:** Ensure the SD card is properly inserted. Although formatting is generally not required, if issues persist, try formatting the SD card using the device's menu or a computer.
- **Poor video quality:** Clean the camera lenses. Ensure the camera angles are correctly adjusted and not obstructed.
- **GPS not working:** Ensure the device has a clear view of the sky for satellite reception.

If problems persist, please contact Yupiteru customer support.

## 7. SPECIFICATIONS

Feature	Detail
Brand	Yupiteru
Model Name	Y-3100
Compatible Vehicle Type	Car
Special Features	Built-in GPS, STARVIS, HDR, Parking Surveillance
Video Capture Resolution	1080p (Full HD)
Included Components	Warranty card, 32GB microSD card
Mounting Type	Front glass mount
Color	Black
Product Dimensions (D x W x H)	2.8 x 6.5 x 5.3 cm
Product Weight	171 grams
Lens Mount Type	Front glass mount
Screen Size	2.4 inches
Auto Part Position	Front top
Battery Included	Yes
Display Type	LCD
Supported Video Standards	AVI
Battery Cell Type	Manganese dioxide lithium

Compatible Devices	Laptop, PC
Country of Origin	South Korea

## 8. WARRANTY AND SUPPORT

---

### 8.1 Warranty Information

The Yupiteru marumie Y-3100 comes with a 3-year manufacturer's warranty. Please refer to the included warranty card for detailed terms and conditions.

### 8.2 Customer Support

For technical assistance, troubleshooting, or any inquiries regarding your product, please visit the official Yupiteru website or contact their customer support service. Contact details can be found on the warranty card or the Yupiteru website.