



Manuals.plus /

- › Gurexl /
- › Gurexl Vanity Desk with Lighted Mirror (Model Black-5079) Instruction Manual

Gurexl Black-5079

Gurexl Vanity Desk with Lighted Mirror

MODEL: BLACK-5079

Introduction

Thank you for choosing the Gurexl Vanity Desk with Lighted Mirror. This modern dressing table is designed to enhance your daily beauty routine with its ample storage, adjustable lighting, and convenient features. Please read this manual thoroughly before assembly and use to ensure proper function and longevity of your product.



Overview of the Gurexl Vanity Desk with Lighted Mirror and included stool.

Key Features:

- **Ample Storage Space:** Features 5 large drawers, 3 open shelves, lipstick grids, and a hair dryer holder for organized storage.
- **3 Lighting Modes & Brightness Adjustable:** Large mirror with 10 LED bulbs offering warm yellow, warm white, and cool white light, with adjustable brightness.
- **Makeup Vanity with Charging Station:** Includes 2 AC sockets and 2 USB ports for convenient device charging.
- **Human Body Induction:** Intelligent sensor automatically turns lights on when you approach and off when you leave.
- **Comfortable Stool:** A cushioned stool is included for a complete vanity setup.

Setup Instructions

Before beginning assembly, ensure all parts are present and undamaged. Refer to the included assembly guide for detailed, step-by-step instructions and diagrams. It is recommended to assemble the vanity desk on a soft, clean

surface to prevent scratches.

1. **Unpack Components:** Carefully remove all parts from the packaging and lay them out. Verify against the parts list in your separate assembly manual.
2. **Assemble Base Structure:** Follow the instructions to connect the main desk panels and support structures.
3. **Install Drawers:** Assemble and insert the drawers into their designated slots.
4. **Attach Mirror and Shelves:** Secure the mirror and the upper shelving unit to the main desk.
5. **Connect Electrical Components:** Install the LED bulbs, charging station, and human body induction sensor according to the wiring diagrams. Ensure all connections are secure.
6. **Assemble Stool:** Put together the cushioned stool.
7. **Final Placement:** Position the vanity desk in your desired location, ensuring it is stable and level.



Detailed dimensions and component breakdown for assembly.

Operating Instructions

1. Lighted Mirror Operation

The vanity mirror features 10 LED bulbs with adjustable lighting modes and brightness.

- **Power On/Off:** Press the power button on the mirror's touch control panel to turn the lights on or off.
- **Change Color Mode:** Tap the mode button to cycle through three light colors: warm yellow, warm white, and cool white.
- **Adjust Brightness:** Press and hold the brightness button to increase or decrease the light intensity. Release when the desired brightness is reached.

INTELLIGENT BRIGHTNESS



WHITE LIGHT



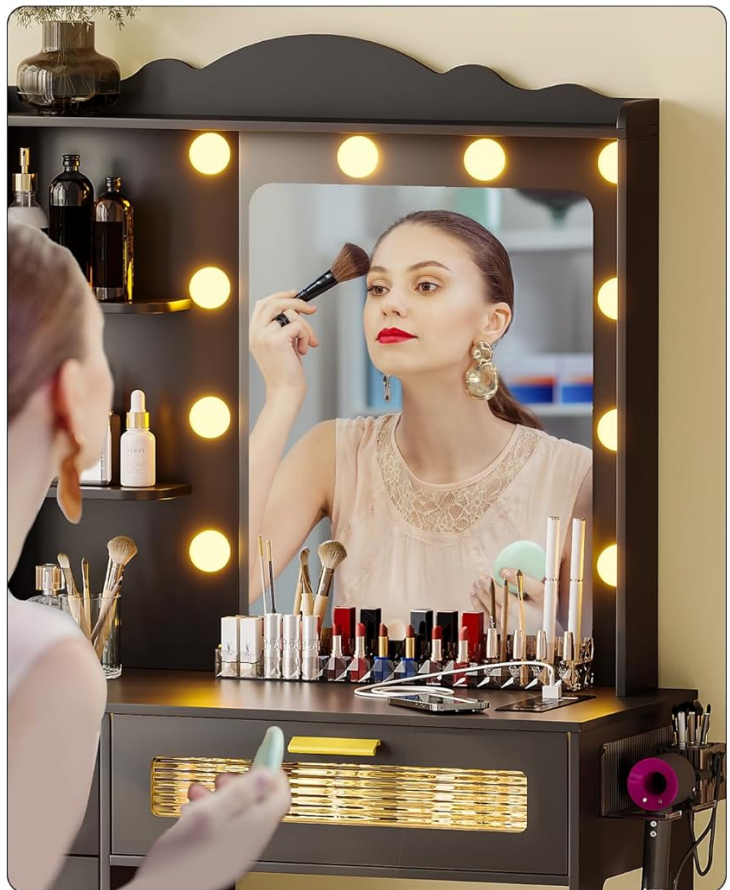
NATURAL LIGHT



WARM LIGHT

3 COLOR TEMPERATURE

Touch the button to change modes



Touch control panel for adjusting light modes and brightness.




Visual representation of warm, natural, and white light settings.

2. Charging Station Usage

The built-in charging station provides convenient power access for your devices.

- **AC Outlets:** Plug in hair dryers, curling irons, or other AC-powered devices into the 2 standard outlets.
- **USB Ports:** Use the 2 USB ports (Type-A and Type-C) to charge your smartphone, tablet, or other USB-powered accessories.

SMART HUMAN BODY INDUCITON

After pressing  button, the light will automatically turn on when you approach



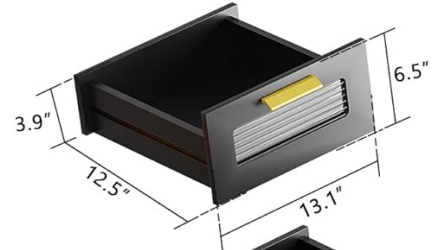
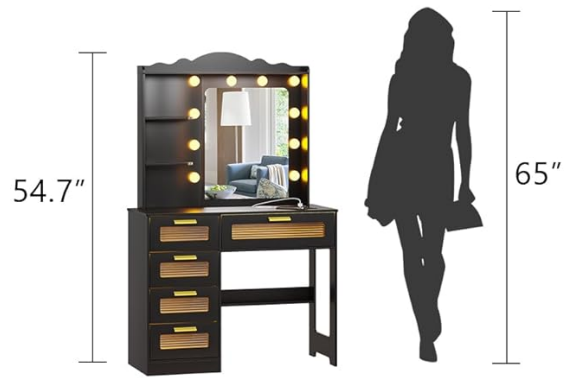
Close-up of the integrated charging station.

3. Human Body Induction Function

The vanity desk is equipped with a smart human body induction sensor.

- **Automatic Activation:** The mirror lights will automatically turn on when you approach the vanity desk within a range of 3-4 meters.
- **Automatic Deactivation:** The lights will automatically turn off when you move away from the vanity desk.

DIMENSION



Visual explanation of the human body induction feature.

4. Storage Features

Utilize the various storage options to keep your beauty essentials organized.

- **Drawers:** Use the 5 spacious drawers for cosmetics, jewelry, and other items.
- **Open Shelves:** Display frequently used items or decorative pieces on the 3 open shelves.
- **Lipstick Grids:** Keep your lipsticks and small items neatly arranged in the dedicated grids.
- **Hair Dryer Holder:** Store your hair dryer conveniently on the side-mounted holder.



Detail of the vanity desk drawers for organized storage.

Maintenance

Proper care will ensure the longevity and appearance of your Gurexl Vanity Desk.

- **Cleaning:** Wipe the surfaces with a damp cloth. Avoid harsh chemicals or abrasive cleaners that may damage the finish.
- **Mirror Care:** Clean the mirror with a glass cleaner and a soft, lint-free cloth.
- **Electrical Components:** Ensure all electrical connections are dry and free from dust. Do not immerse any electrical parts in water.
- **Stool Care:** Clean the cushioned stool according to its material type. For fabric, spot clean with a mild detergent.
- **General:** Periodically check all screws and fasteners to ensure they are tight.

Troubleshooting

If you encounter any issues with your vanity desk, refer to the following common problems and solutions:

Problem	Possible Cause	Solution
Mirror lights not turning on.	Power cord not plugged in; loose connection; bulb failure.	Check power connection; ensure all bulb connections are secure; replace faulty bulbs if necessary.
Lights not changing modes or brightness.	Touch control panel malfunction.	Ensure hands are clean and dry when using touch controls. If issue persists, contact customer support.
Charging station not working.	Power cord not plugged in; device not compatible; faulty port.	Verify power connection; test with different devices and cables; contact customer support if ports are unresponsive.
Human body induction sensor not responding.	Sensor obstructed; incorrect placement; sensor malfunction.	Ensure the sensor area is clear; verify the vanity is placed in an open area; contact customer support if issue persists.

Specifications

Detailed specifications for the Gurexl Vanity Desk, Model Black-5079.

Feature	Detail
Brand	Gurexl
Model Number	Black-5079
Product Dimensions	15.7"D x 37.4"W x 54.7"H
Item Depth	15.7 inches
Material	Wood
Frame Material	Wood
Seat Material Type	Wood (for stool frame)
Color	Black5079
Style	Modern
Lighting	10 LED bulbs, 3 color modes (warm yellow, warm white, cool white), adjustable brightness
Charging Station	2 AC outlets, 2 USB ports
Sensor	Human Body Induction (3-4 meter range)

Warranty and Support

Gurexl products are manufactured with quality and customer satisfaction in mind. For specific warranty details, including coverage period and terms, please refer to the warranty card included with your product or contact Gurexl customer support directly. Keep your purchase receipt as proof of purchase.

For technical assistance, missing parts, or any other inquiries, please contact Gurexl customer service through the retailer's platform or the official Gurexl website. Our support team is available to help you with any questions or concerns.

Official Product Videos

Watch these official videos from Gurexl for additional product information and demonstrations.

Your browser does not support the video tag.

Video: Gurexl Lighted Makeup Vanity Desk with Mirror and Stool. This video provides an overview of the vanity desk, highlighting its features and design.