

Brilliant BHW120US-WH2

Brilliant Smart Home Control (Plug-In Panel) User Manual

Model: BHW120US-WH2

[Introduction](#) [Setup](#) [Operation](#) [Maintenance](#) [Troubleshooting](#) [Specifications](#) [Support](#)

1. INTRODUCTION

The Brilliant Smart Home Control (Plug-In Panel) is an innovative touchscreen device designed to centralize control of your smart home ecosystem. By simply plugging it into an outlet and mounting it to a wall, it transforms any space into a smart hub, offering intuitive control over lighting, music, climate, security, and more. With built-in Alexa, it provides both touch and voice-activated control, enhancing convenience and simplifying your daily routines.



Image: The Brilliant Smart Home Control Plug-In Panel, showing its touchscreen interface and the attached power cord for plug-in installation.

2. SETUP AND INSTALLATION

The Brilliant Plug-In Panel is designed for easy installation without the need for complex electrical wiring or a neutral wire. It can be flush-mounted to any wall and powered by plugging it into a standard electrical outlet.

2.1. What's in the Box

- Brilliant Smart Home Control (Plug-In Panel)
- Mounting hardware (screws, wall anchors)
- Power adapter and cable
- Quick Start Guide

2.2. Installation Steps

1. **Choose a Location:** Select a suitable wall location near a standard electrical outlet. Ensure the chosen spot allows for easy access and visibility of the panel.
2. **Mount the Baseplate:** Use the provided mounting hardware to securely attach the baseplate to the wall.

Ensure it is level before tightening screws.

3. **Connect Power:** Plug the power cable into the Brilliant Plug-In Panel and then into the electrical outlet. The device will power on automatically.
4. **Install Faceplate:** Carefully align and install the Brilliant faceplate onto the mounted baseplate until it clicks into place.
5. **Initial Setup:** Follow the on-screen instructions on the Brilliant panel to connect to your Wi-Fi network and set up your smart home devices.

Mount on any wall and plug it into an outlet



- ✓ No electrical wiring or neutral wire required
- ✓ Route cable on the wall or in the wall

Image: The Brilliant Plug-In Panel shown mounted on a wall, with its power cable neatly routed to a nearby electrical outlet, illustrating its easy installation.



Image: A visual guide demonstrating the three-step installation process: mounting the baseplate, installing the faceplate, and plugging into power.

3. OPERATION

The Brilliant Smart Home Control offers multiple ways to interact with your smart home devices, including its intuitive touchscreen, voice commands via built-in Alexa, and motion detection.

3.1. Touchscreen Interface

The 5-inch LCD touchscreen provides a central point of control for all connected devices. Navigate through various categories such as Lights, Music, Climate, and Security. Tap icons to control individual devices or activate pre-set scenes.

Make it easy for everyone to control your smart home

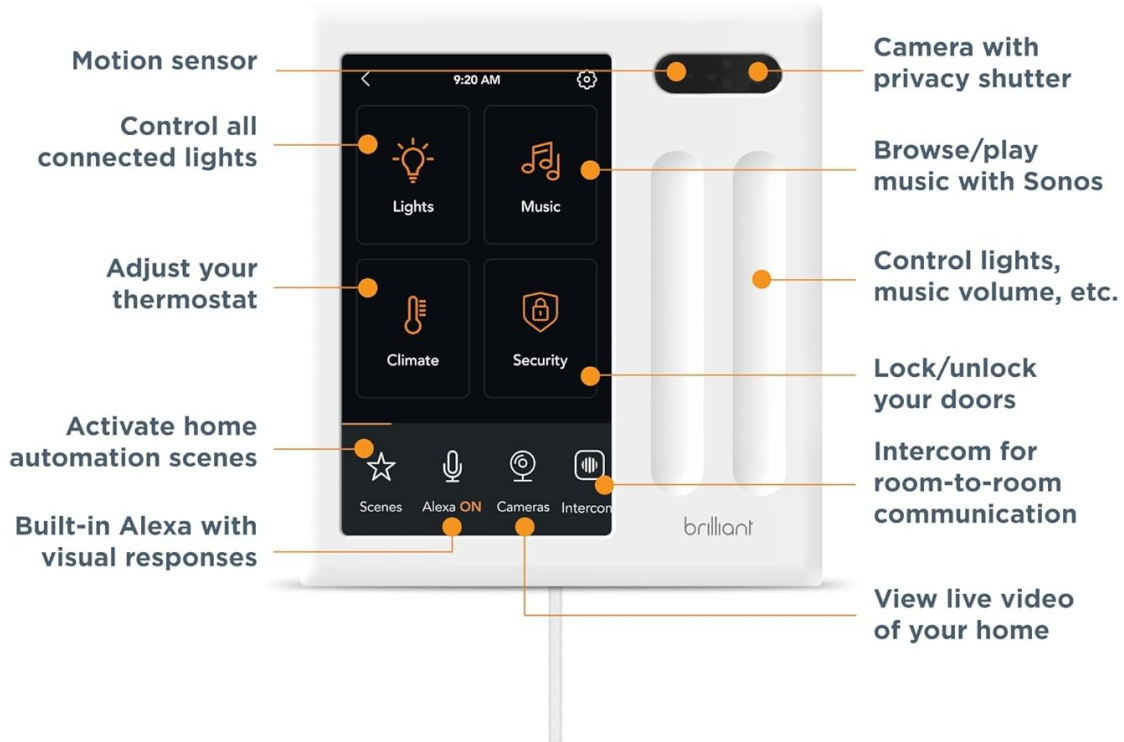


Image: An annotated diagram highlighting key features of the Brilliant panel, including the motion sensor, camera with privacy shutter, and various control functions like lights, music, climate, and security.

3.2. Voice Control with Alexa

With Alexa built-in, you can use voice commands to control your smart home. Simply say "Alexa," followed by your command, such as "Alexa, turn off the living room lights" or "Alexa, play music." The panel provides visual responses on the screen.

3.3. Smart Home Integrations

The Brilliant panel is compatible with a wide range of popular smart home devices and platforms, allowing for seamless integration and control.

- **Lighting:** Control smart bulbs (e.g., Philips Hue, LIFX, Kasa TP-Link) and traditional lights connected via smart switches. Supports LED, CFL, halogen, incandescent bulbs, dimmable, and multiway setups.
- **Music:** Browse and play music through Sonos speakers directly from the panel. Select rooms and adjust volume.
- **Security & Access:** See who's at the door with Ring Video Doorbells and unlock compatible smart locks (e.g., Kwikset, Schlage, Yale, August).
- **Climate:** Adjust thermostats (e.g., Google Nest, ecobee, Honeywell Home).

- **Other Devices:** Compatible with Wemo, SmartThings, Apple HomeKit, and more.

Easily control popular smart home devices

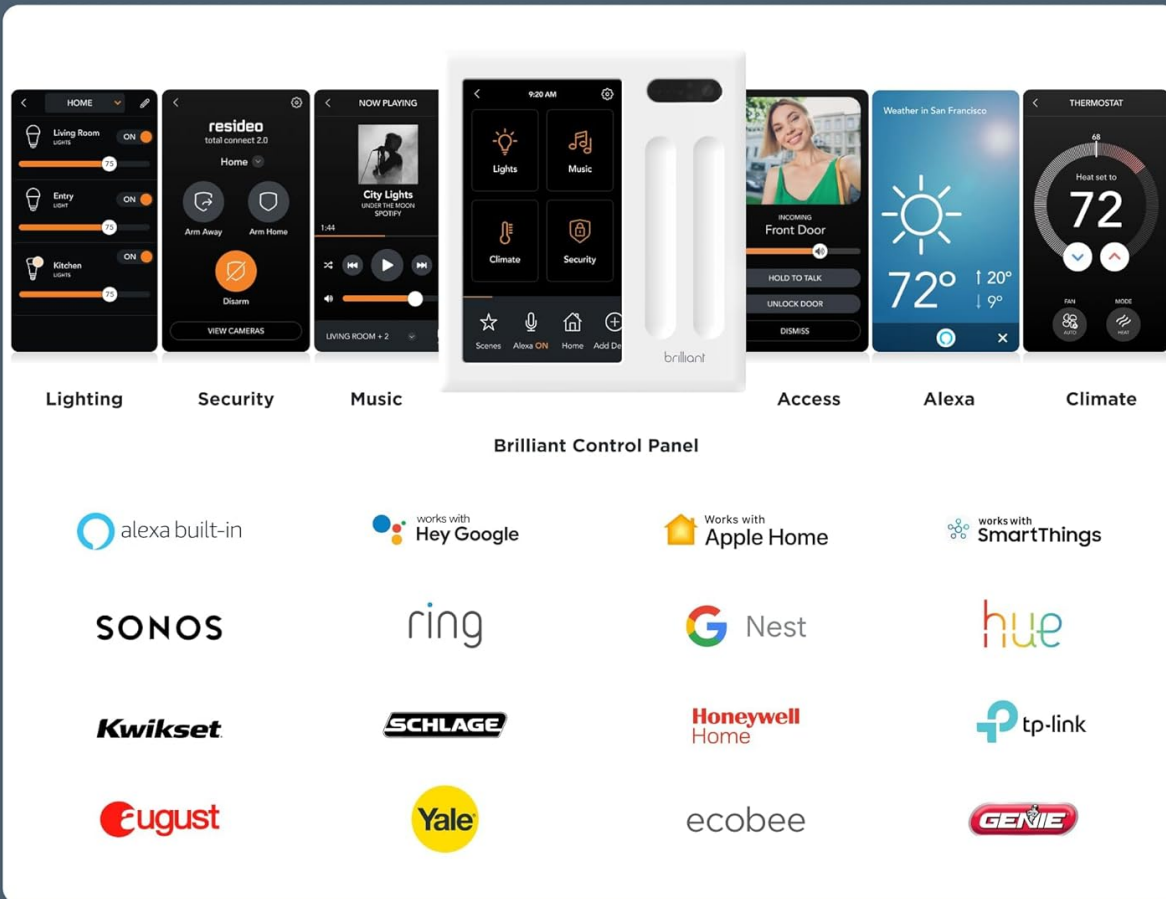


Image: A visual representation of the Brilliant Control Panel's interface, showing how it can manage lighting, security, music, access, Alexa, and climate controls, alongside logos of compatible smart home brands.

Control your Sonos music experience from your wall

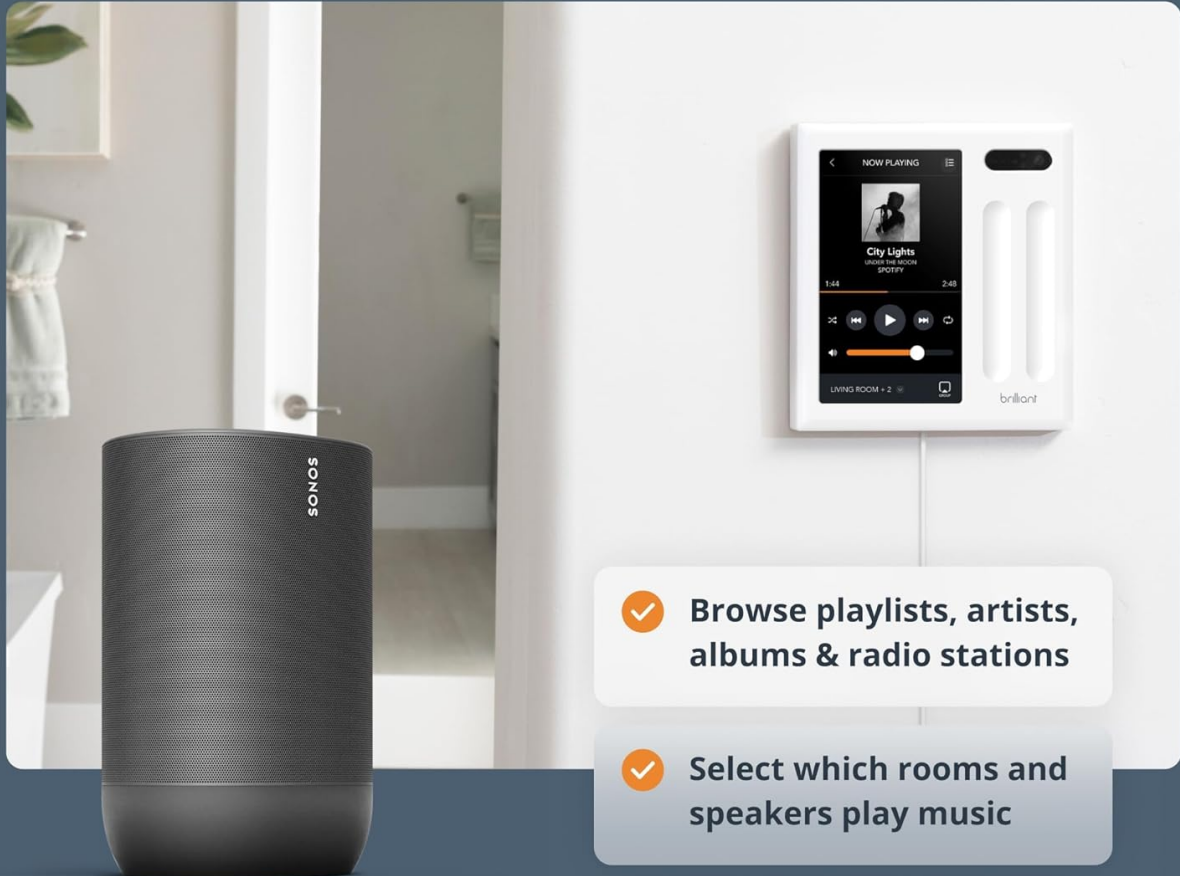


Image: A user interacting with the Brilliant panel to control Sonos music, demonstrating the ability to browse playlists and select speakers directly from the wall-mounted device.

See who's at the door and let them in with a tap



✓ Answer the door without
needing your phone

✓ View security cameras
and control smart locks

Image: A person using the Brilliant panel to view a Ring Video Doorbell feed and control a smart lock, illustrating seamless integration for home access and security.

3.4. Motion Detection and Scenes

The built-in motion sensor can be used to automate lighting or activate scenes when motion is detected. Create custom scenes to trigger multiple actions with a single command or tap, such as "Good Morning" or "Movie Night."

3.5. Mobile App Control

Manage your Brilliant Smart Home Control and connected devices from anywhere using the Brilliant mobile app, available for both iOS and Android. The app provides the same comprehensive control as the panel itself.

Control your home with only one app

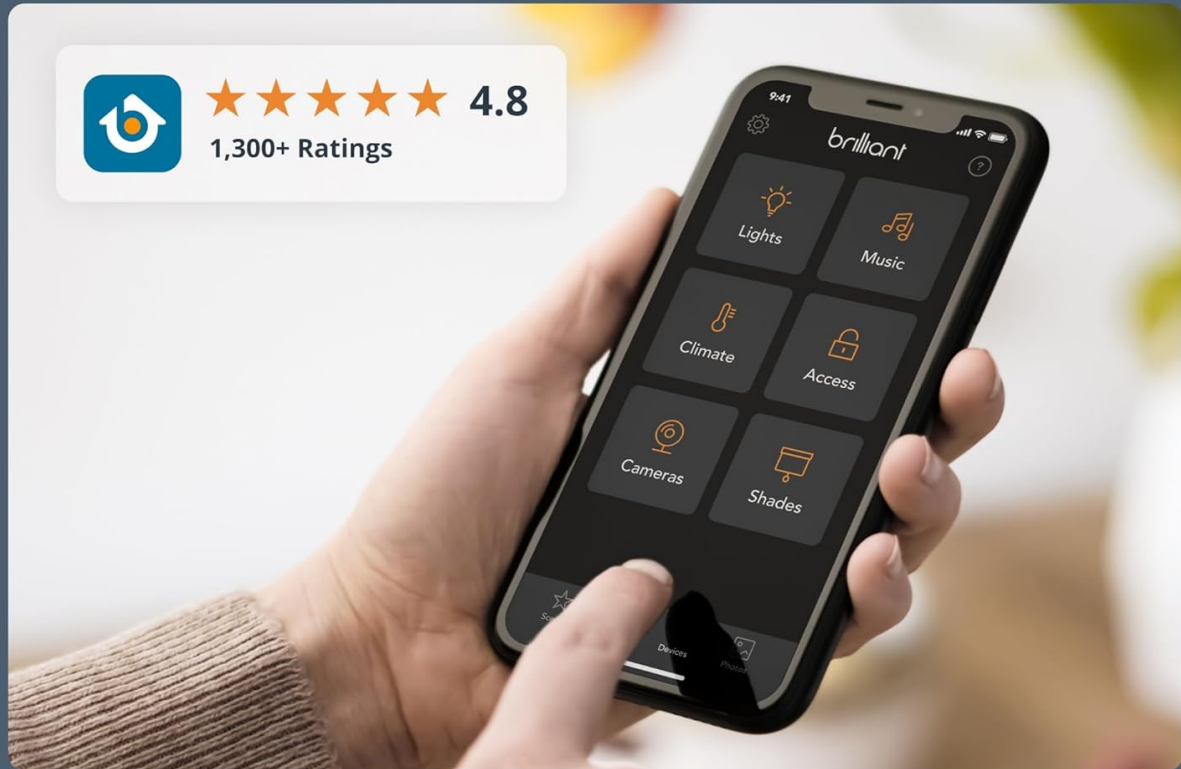


Image: A smartphone displaying the Brilliant mobile app interface, showing how users can control lights, music, climate, and other smart home functions remotely.

4. MAINTENANCE

To ensure optimal performance and longevity of your Brilliant Smart Home Control, follow these simple maintenance guidelines:

- **Cleaning:** Gently wipe the touchscreen and exterior surfaces with a soft, dry, lint-free cloth. For stubborn smudges, slightly dampen the cloth with water. Avoid using abrasive cleaners, solvents, or aerosol sprays, as these can damage the finish or internal components.
- **Software Updates:** The Brilliant panel receives automatic software updates to improve performance, add new features, and enhance security. Ensure your device is connected to the internet to receive these updates.
- **Privacy Shutter:** The built-in camera features a physical privacy shutter. Ensure it is closed when the camera is not in use for enhanced privacy.
- **Environmental Conditions:** Operate the device within recommended temperature and humidity ranges. Avoid exposing it to extreme temperatures, direct sunlight for prolonged periods, or high moisture environments.

5. TROUBLESHOOTING

If you encounter issues with your Brilliant Smart Home Control, refer to the following common troubleshooting steps:

Problem	Possible Cause	Solution
Panel is unresponsive or frozen.	Temporary software glitch.	Unplug the panel from the outlet, wait 10 seconds, then plug it back in to restart.
Cannot connect to Wi-Fi.	Incorrect password, weak signal, or router issue.	Double-check Wi-Fi password. Move panel closer to router. Restart your Wi-Fi router.
Voice commands not working.	Microphone muted, internet connectivity issue, or Alexa service problem.	Ensure microphone is not muted on the panel. Check internet connection. Restart the panel.
Smart devices not responding.	Device offline, integration issue, or network problem.	Verify the smart device is powered on and connected to its network. Check Brilliant app for device status. Re-link the device if necessary.
Screen is dim or black.	Power issue or panel in sleep mode.	Ensure the panel is properly plugged in. Tap the screen or press a button to wake it from sleep mode.

If these steps do not resolve your issue, please refer to the official Brilliant support resources or contact customer service.

6. SPECIFICATIONS

Feature	Detail
Model Number	BHW120US-WH2
Manufacturer	Brilliant
Item Weight	1.15 pounds
Package Dimensions	9.49 x 6.85 x 2.4 inches
Style	Plug-In Panel
Display	5" LCD Touchscreen
Voice Assistant	Alexa Built-In
Sensors	Motion Sensor, Camera with Privacy Shutter
Connectivity	Wi-Fi
Power Requirement	Plugs into any standard outlet (no neutral wire required)
Date First Available	July 21, 2023

7. WARRANTY AND SUPPORT

7.1. Warranty Information

Brilliant products typically come with a limited warranty covering defects in materials and workmanship. For specific warranty terms and conditions, including duration and coverage details, please refer to the warranty card included with your product or visit the official Brilliant website. Keep your proof of purchase for warranty claims.

7.2. Customer Support

For further assistance, technical support, or to report issues not covered in this manual, please contact Brilliant customer support through their official channels. You can typically find contact information (phone, email, or support portal) on the Brilliant website or in the product packaging.


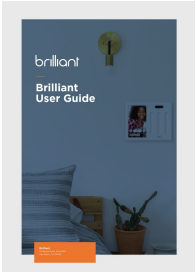
Online Resources:



- Visit the [Brilliant Store on Amazon](#) for product information and updates.
- Check the official Brilliant website for FAQs, detailed guides, and community forums.

© 2023 Brilliant. All rights reserved.

This manual is for informational purposes only. Specifications are subject to change without notice.

Related Documents

	<p>Brilliant Smart Plug Quick Start Guide</p> <p>A quick start guide for the Brilliant Smart Plug, detailing setup requirements, app usage, key features, troubleshooting, and compatibility with smart home systems.</p>
	<p>Brilliant User Guide: Setup, Features, Integrations, and Troubleshooting</p> <p>Comprehensive user guide for the Brilliant smart home control panel, covering setup, built-in features, third-party integrations, mobile app usage, care, and troubleshooting.</p>

 <p>The image shows the cover of the user manual for the Brilliant WiFi Garden Light Controller (Model 20701/06). The cover features the Brilliant logo at the top left, followed by the product name 'WiFi Garden Light Controller' and 'AQUALUX RGBW LED Outdoor'. Below this is the model number '20701/06'. The central image shows the black light controller unit with two cables. At the bottom, there are several certification logos (CE, RoHS, etc.) and the text 'USER MANUAL'.</p>	<p>Brilliant WiFi Garden Light Controller (20701/06) - User Manual</p> <p>User manual for the Brilliant AQUALUX WiFi Garden Light Controller (Model 20701/06), detailing installation, setup, technical specifications, app control, voice integration, and warranty.</p>
 <p>The image shows the cover of the quick start guide for the Brilliant Tuya Wi-Fi LED Bulb (model 96602/05). The cover features the Brilliant logo at the top left, followed by 'Smart Home Lighting'. The central image shows a hand holding a smartphone displaying the Tuya app interface. Below this, there is text in German: 'Bedienungsanleitung für WLAN Leuchtmittel' and 'Tuya Wi-Fi LED Leuchtmittel 96602/05'. At the bottom, there is a small URL: 'www.brightlighting.com'.</p>	<p>Brilliant Tuya Wi-Fi LED Bulb 96602/05: Quick Start Guide & Setup</p> <p>Comprehensive quick start guide for the Brilliant Tuya Wi-Fi LED Bulb (model 96602/05). Learn how to install, connect to the Tuya Smart app, use voice control with Alexa and Google Assistant, and troubleshoot common issues.</p>