

## Rheem RTGH-X

# Rheem RTGH-X Outdoor Vent Kit for High Efficiency Gas Tankless Water Heater Instruction Manual

## INTRODUCTION

This manual provides essential instructions for the installation, operation, and maintenance of the Rheem RTGH-X Outdoor Vent Kit. This kit is designed to convert compatible Rheem high-efficiency indoor tankless water heaters for outdoor installation, offering space-saving benefits and eliminating the need for indoor exhaust venting.

### Key Features:

- Compatible with Rheem high-efficiency tankless water heaters (RTGH-3 models).
- Enables outdoor installations, saving indoor space and reducing venting costs.
- Designed for straightforward assembly.
- Constructed to withstand outdoor environmental conditions.

## SETUP AND INSTALLATION

The Rheem RTGH-X Outdoor Vent Kit facilitates the outdoor placement of your Rheem high-efficiency tankless water heater. Proper installation is crucial for safety and optimal performance. Always refer to the specific installation manual for your Rheem tankless water heater in conjunction with these instructions.

### Required Tools

- Phillips head screwdriver
- Appropriate mounting hardware (not included, refer to water heater manual)
- Level
- Drill (if required for mounting)

### Installation Steps (General Guidelines)

1. **Unpack Components:** Carefully remove all components from the packaging. Verify that all parts listed in the kit's packing list are present.
2. **Prepare Mounting Location:** Select a suitable outdoor location for the tankless water heater and vent kit. Ensure the surface is flat, stable, and can support the combined weight of the unit and kit. Adhere to all local codes and manufacturer's clearances.

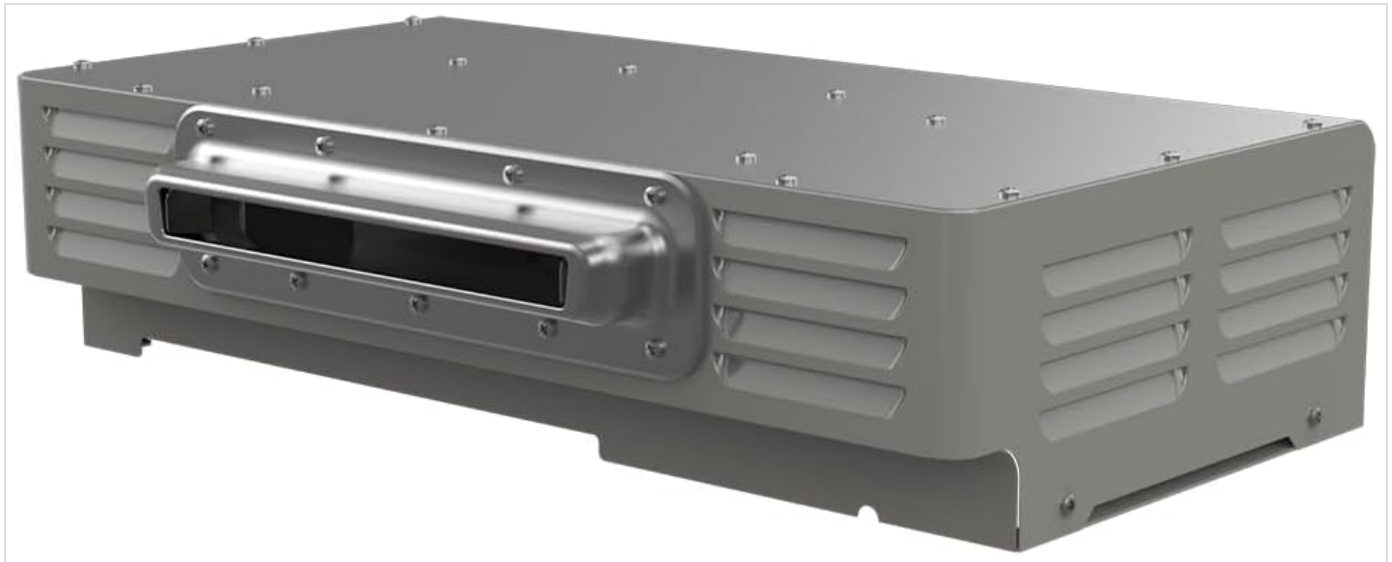
3. **Attach Vent Kit to Water Heater:** Follow the specific instructions provided with your Rheem tankless water heater for attaching the RTGH-X outdoor vent kit. This typically involves securing the kit to the top of the water heater unit, aligning the exhaust and intake ports.
4. **Mount Assembly:** Mount the combined tankless water heater and outdoor vent kit assembly securely to the chosen outdoor wall or structure. Use appropriate mounting hardware for the wall material.
5. **Connect Utilities:** Connect gas, water, and electrical lines according to the tankless water heater's installation manual and local codes. Ensure all connections are leak-free and secure.
6. **Final Inspection:** Before operation, perform a thorough visual inspection of the entire installation. Ensure all screws are tightened, connections are secure, and there are no obstructions to the vent openings.



*Image: A Rheem tankless water heater with the RTGH-X outdoor vent kit is shown installed on the exterior wall of a house, demonstrating a typical outdoor setup.*



*Image: A close-up front view of the Rheem RTGH-X Outdoor Vent Kit, highlighting its gray finish and vent openings.*



*Image: An angled perspective of the Rheem RTGH-X Outdoor Vent Kit, showing its compact design and side vents.*



*Image: A view from the bottom of the Rheem RTGH-X Outdoor Vent Kit, illustrating the internal structure and connection points for the water heater.*



*Image: A front view of a Rheem high-efficiency tankless water heater, compatible with the RTGH-X outdoor vent kit.*

## OPERATING INSTRUCTIONS

---

The Rheem RTGH-X Outdoor Vent Kit is a passive component designed to enclose and protect your Rheem high-efficiency tankless water heater when installed outdoors. It does not have active operational controls. The operation of the water heater itself is governed by its own control panel and internal systems. Refer to your Rheem tankless water heater's user manual for detailed operating instructions.

Ensure that the vent openings on the kit remain unobstructed at all times to allow for proper air intake and exhaust for the tankless water heater.

## MAINTENANCE

Regular maintenance of the RTGH-X Outdoor Vent Kit ensures its longevity and the efficient operation of your tankless water heater.

- **Visual Inspection:** Periodically inspect the exterior of the vent kit for any signs of damage, corrosion, or wear. Check for loose screws or panels.
- **Clear Obstructions:** Ensure that the air intake and exhaust vents are free from debris, leaves, insects, or other obstructions. Clear any blockages immediately.
- **Cleaning:** Clean the exterior surfaces of the kit with a mild detergent and water as needed. Avoid abrasive cleaners or solvents that could damage the finish.
- **Pest Control:** Regularly check for signs of insect or rodent activity around the unit and take appropriate measures if detected.

## TROUBLESHOOTING

The RTGH-X Outdoor Vent Kit is a passive enclosure. Most operational issues will stem from the tankless water heater itself. However, issues related to the kit can impact the water heater's performance.

| Problem  | Possible Cause                                    | Solution  |
|--|---|---|
| Water heater not operating correctly (e.g., error codes, shutdown) | Obstructed vent openings on the kit.              | Inspect and clear any debris, leaves, or other blockages from the air intake and exhaust vents.   |
| Visible damage to the kit enclosure.                               | Impact, weather exposure, or wear.                | Assess the extent of the damage. Minor cosmetic damage may not affect function. Significant structural damage may require replacement of the kit or affected components. Contact Rheem support if unsure. |
| Loose panels or screws on the kit.                                 | Vibration, weather, or improper initial assembly. | Carefully tighten any loose screws using a Phillips head screwdriver. Do not overtighten.   |

For all other operational issues or error codes displayed by the tankless water heater, refer to the specific troubleshooting section in your Rheem tankless water heater's user manual or contact Rheem customer support.

## SPECIFICATIONS

| Feature            | Detail                   |
|--------------------|--------------------------|
| Brand              | Rheem                    |
| Model Number       | RTGH-X                   |
| Part Number        | RTGH-X                   |
| Item Weight        | 5 pounds                 |
| Product Dimensions | 11 x 17.63 x 4.38 inches |
| Color              | Gray                     |

| Feature               | Detail   |
|-----------------------|--|
| Material              | Stainless Steel  |
| Item Package Quantity | 1  |
| Included Components   | Cap, Display Cover, Wiring Kit and Display Mount for WiFi models |
| Manufacturer          | Rheem  |
| Date First Available  | September 18, 2023   |

## WARRANTY INFORMATION

Specific warranty details for the Rheem RTGH-X Outdoor Vent Kit are not provided in this document. For comprehensive warranty information, please refer to the official Rheem website or the warranty card included with your product at the time of purchase. Retain your proof of purchase for warranty claims.

## CUSTOMER SUPPORT

For technical assistance, installation questions, or to report issues with your Rheem RTGH-X Outdoor Vent Kit, please contact Rheem customer support directly.

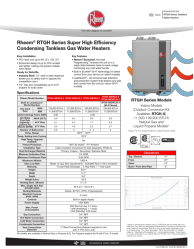
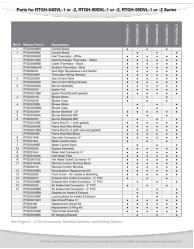
**Rheem Official Website:** [www.rheem.com](http://www.rheem.com)





Please have your product model number (RTGH-X) and purchase date available when contacting support.



© 2023 Rheem Manufacturing Company. All rights reserved.

## Related Documents - RTGH-X

|   |  |
|---|--|
|  | <p><a href="#">Rheem RTGH Series High-Efficiency Condensing Tankless Gas Water Heaters   Specs &amp; Features</a></p> <p>Explore the Rheem RTGH Series Super High Efficiency Condensing Tankless Gas Water Heaters. Get detailed specifications, installation guides, flow rates, and accessories for models RTGH-68, RTGH-84, RTGH-90, and RTGH-95.</p> |
|  | <p><a href="#">Rheem Tankless Water Heater Parts List and Diagrams</a></p> <p>Comprehensive parts list and identification guide for Rheem RTGH and RTG series tankless water heaters, covering various models including DVL, XL, DV, DVL, X, and XL series. Includes part numbers, descriptions, and model applicability.</p>                            |

|   |  |
|---|--|
|  <p><b>TANKLESS EASY<br/>INSTALLATION GUIDE</b><br/>Tips for Professional Installation &amp; Product Setup</p> <p>REGISTER YOUR<br/>15 YEAR WARRANTY</p>  | <p><a href="#">Rheem Tankless Water Heater Easy Installation Guide: Tips for Professional Setup</a></p> <p>Comprehensive installation guide for Rheem tankless water heaters, covering setup, connections, venting, electrical, troubleshooting, and maintenance. Includes step-by-step instructions and important safety information.</p>   |
|  <p><b>SUPER HIGH EFFICIENCY CONDENSING<br/>TANKLESS WATER HEATER<br/>USE AND CARE MANUAL</b></p> <p>With Installation Instructions<br/>for the Tankless<br/>Condensing Direct Vent<br/>Gas Water Heater<br/>RTGH-95DVL-3 and 130,000 Btu/hr and 150,000 Btu/hr Models</p> <p><b>WARNING:</b><br/>Read and understand all instructions and warnings before attempting to install, operate, or maintain this product. Failure to follow instructions may result in property damage, personal injury, or death.</p> <p><b>After Your Safety:</b><br/>Read and understand all instructions and warnings before attempting to install, operate, or maintain this product. Failure to follow instructions may result in property damage, personal injury, or death.</p> | <p><a href="#">Rheem Super High Efficiency Condensing Tankless Water Heater Use and Care Manual</a></p> <p>Comprehensive use and care manual for Rheem Super High Efficiency Condensing Tankless Water Heaters, detailing installation, safety, operation, and maintenance for models like RTGH-95DVL-3 and various Btu/hr capacities.</p>   |
|  <p><b>TANKLESS WATER HEATING<br/>PARTS &amp;<br/>ACCESSORIES<br/>2016 CATALOG</b></p>   | <p><a href="#">Rheem Tankless Water Heater Parts &amp; Accessories Catalog 2016</a></p> <p>Comprehensive 2016 catalog of replacement parts and accessories for Rheem, Ruud, Richmond, EcoSense, and Paloma tankless water heaters. Includes detailed part lists, model cross-references, and accessory information.</p>  |
|  <p><b>TANKLESS WATER HEATING<br/>PARTS &amp;<br/>ACCESSORIES<br/>2023 CATALOG</b></p>  | <p><a href="#">Rheem Tankless Water Heating Parts &amp; Accessories 2023 Catalog</a></p> <p>Explore the comprehensive 2023 catalog from Rheem, featuring a wide range of parts and accessories for Rheem tankless water heaters. Find replacement components, venting solutions, and control systems to ensure optimal performance and longevity of your Rheem water heating system.</p> |