

[Manuals.plus](#) /

> [Gibbon Mounts](#) /

> Gibbon Mounts Mobile Standing Desk (Model FDS111C) - Instruction Manual

## Gibbon Mounts FDS111C

# Gibbon Mounts Mobile Standing Desk (Model FDS111C) - Instruction Manual

Model: FDS111C | Brand: Gibbon Mounts

## 1. PRODUCT OVERVIEW

---

The Gibbon Mounts Mobile Standing Desk is a versatile and adjustable workstation designed for various environments, including home, office, and medical settings. It features pneumatic height adjustment, hidden casters for easy mobility, and a spacious, waterproof tabletop.

# Different Heights for All Ideas

Height adjustment from 25.9" to 42.1"



Image: The desk demonstrating its adjustable height range, suitable for both sitting and standing positions.

## 2. KEY FEATURES

- **Easy Height Adjustment:** Features a built-in gas spring for smooth transitions between sitting (25.9") and standing (42.1") positions.
- **Hidden Casters for Mobility:** Equipped with 4 hidden wheels for effortless movement across various floor types. The low-profile base (1.2" minimum height) allows it to tuck under furniture.
- **Portable Workstation:** Offers a 31.5" W x 15.7" D surface, ideal for laptops, tablets, external keyboards, and other work essentials.
- **Multifunctional Design:** Suitable for use in offices, schools, hospitals, conference rooms, or as a bedside/couch table.
- **Waterproof Tabletop:** The surface is designed to be waterproof for easy cleaning and durability.
- **Integrated Slot:** A convenient slot is included for holding tablets or smartphones.



Image: Detailed view of the gas spring lifting mechanism and the integrated cell phone slot.

### 3. SETUP AND ASSEMBLY

---

The Gibbon Mounts Mobile Standing Desk is designed for straightforward assembly. All necessary hardware and detailed step-by-step instructions are included.

#### Assembly Steps:

1. **Step 1: Prepare the Column:** Before installing the column to the connecting part, pull the plastic cover upward. **Do not rotate the plastic cover.**
2. **Step 2: Fix the Column to the Desktop:** Securely attach the main column to the underside of the desktop using the provided screws.
3. **Step 3: Fix the Base to the Column:** Attach the base supports to the bottom of the column using the remaining screws.



## Smooth and Stable

Make your workstation mobile

Image: Visual guide for the 3-step assembly process.

## 4. OPERATING INSTRUCTIONS

### Height Adjustment:

The desk features a pneumatic gas spring for smooth height adjustments. The height can be adjusted from 25.9 inches to 42.1 inches.

- **To Raise the Desk:** Squeeze the handle located under the desktop and gently pull the desktop upwards to the desired height.
- **To Lower the Desk:** Squeeze the handle and apply downward pressure on the desktop until it reaches the desired lower height.

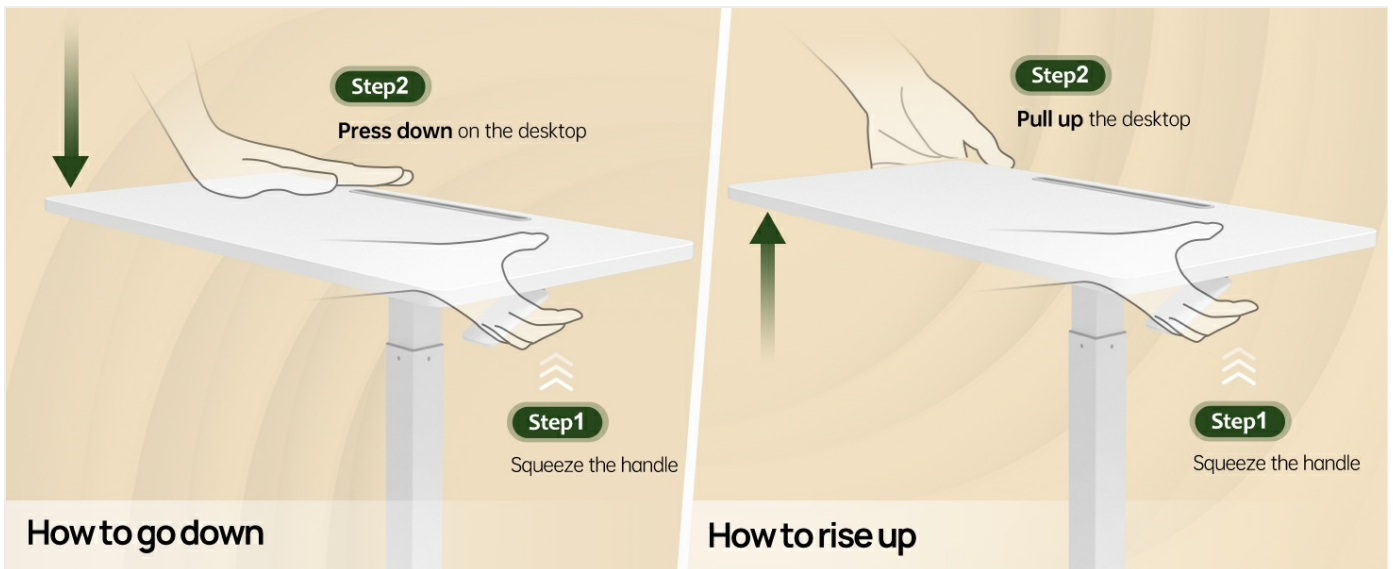


Image: Instructions for raising and lowering the desk.

### Mobility:

The desk is equipped with hidden casters for easy movement. The low-profile base allows it to slide under most furniture with a minimum clearance of 1.2 inches.

# Simple To Move And Store

Hidden wheels & Quieter move



Image: The desk's hidden wheels and low-profile base for easy movement and placement under furniture.

For optimal movement, ensure the path is clear of obstructions. The wheels are designed for smooth gliding on various surfaces.

## 5. MAINTENANCE

To ensure the longevity and optimal performance of your Gibbon Mounts Mobile Standing Desk, follow these simple maintenance guidelines:

- **Cleaning:** Wipe the desktop and frame with a damp cloth. Avoid harsh chemicals that may damage the finish.
- **Stability Check:** Periodically check all screws and connections to ensure they are tight. Retighten if necessary.
- **Caster Care:** Keep the hidden casters free of debris to maintain smooth movement.
- **Weight Capacity:** Do not exceed the maximum weight capacity of 17.6 pounds (8 kg) to prevent damage and ensure stability.

## 6. TROUBLESHOOTING

---

If you encounter any issues with your mobile standing desk, refer to the following common troubleshooting tips:

- **Desk Not Adjusting Height Smoothly:**
  - Ensure the height adjustment handle is fully squeezed.
  - Check for any obstructions around the gas spring mechanism.
  - Verify that the desk is not overloaded beyond its weight capacity.
- **Difficulty Moving the Desk:**
  - Inspect the hidden casters for any trapped debris (e.g., hair, lint) and clean them if necessary.
  - Ensure the floor surface is suitable for rolling.
- **Desk Feels Unstable:**
  - Check all assembly screws and tighten them if loose.
  - Ensure the desk is placed on a flat, level surface.
  - Do not exceed the maximum weight capacity.

If the issue persists, please contact Gibbon Mounts customer support for further assistance.

## 7. SPECIFICATIONS

---

Feature	Detail
Model Number	FDS111C
Brand	Gibbon Mounts
Product Dimensions (D x W x H)	15.7"D x 31.5"W x 25.9"H (Min) to 42.1"H (Max)
Color	White
Material Type	Alloy Steel, Engineered Wood
Lifting Mechanism	Pneumatic Gas Spring
Maximum Weight Recommendation	17.6 Pounds (8 kg)
Special Features	Adjustable Height, C table design, Hidden Wheels, Multifunctional Slot
Assembly Required	Yes (Tools Included)

## 8. WARRANTY AND SUPPORT

---

This Gibbon Mounts Mobile Standing Desk comes with a **Limited Warranty**. For specific warranty details and to register your product, please refer to the documentation included in your package or visit the official Gibbon Mounts website. For customer support, technical assistance, or to inquire about replacement parts, please contact Gibbon Mounts directly. You can often find contact information on the manufacturer's website or through the retailer where the product was purchased.

**Manufacturer:** GIBBON MOUNTS

**Online Store:** [Visit the Gibbon Mounts Store on Amazon](#)

## 9. PRODUCT VIDEOS

---

### Gibbon Mounts Bedside Mobile Standing Desk

Your browser does not support the video tag.

Video: An official product video from Gibbon Joy demonstrating the mobile standing desk's features and use as a bedside table.

### Simple & Modern, Medium-sized standing desk

Your browser does not support the video tag.

Video: A video by Aimee Mielke showcasing the desk's simple design and functionality as a standing desk.

