

IHSENO Remote2

IHSENO ZigBee3.0 Smart Remote Button User Manual

Model: Remote2

1. INTRODUCTION

The IHSENO ZigBee3.0 Smart Remote Button is a wireless control device designed to integrate with your smart home system. It allows for convenient control of various Zigbee-compatible devices and scene modes through single press, double press, and long press actions. This device requires a Zigbee hub (such as a Tuya Gateway) for functionality and can be managed via the Tuya Smart Life application.

2. PRODUCT OVERVIEW

The Smart Remote Button provides a simple, tactile interface for controlling your smart home devices without needing to access your phone or use voice commands. Its compact, circular design allows for flexible placement.



Figure 2.1: IHSENO ZigBee3.0 Smart Remote Button with its associated mobile application interface.

3. PACKAGE CONTENTS

- Scene Remote X1
- User manual X1

4. SPECIFICATIONS

Manufacturer	IHSENO
Item Model Number	Remote2
Communication Protocol	Zigbee 3.0
Control Distance	25m (open area)
Dimensions	1.96 x 0.55 x 1.96 inches (50mm x 50mm)
Item Weight	0.634 ounces
Color	White

Battery Type	1 Lithium Ion battery (included)
Operating Temperature	-10°C to 45°C
Working Humidity	<90%RH
Estimated Battery Life	1 year (general use)

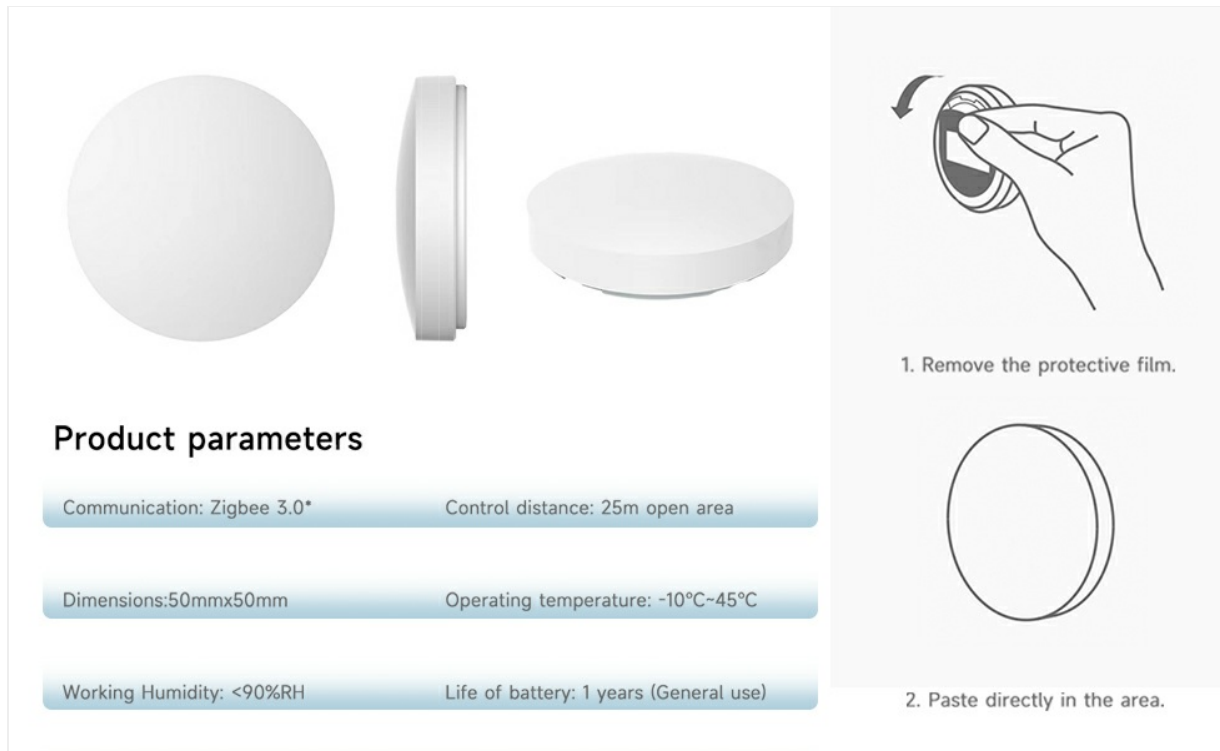


Figure 4.1: Detailed product parameters and instructions for adhesive application.

5. SETUP

5.1. Battery Installation

The Smart Remote Button comes with a pre-installed Lithium Ion battery. Before first use, you may need to remove a protective tab to activate the battery. To access the battery compartment, gently twist the back cover of the button counter-clockwise and remove it. Insert the battery, ensuring correct polarity, then replace the cover by twisting clockwise until secure.

5.2. Pairing with a Zigbee Hub (Tuya Smart Life App)

This device requires a Zigbee hub (e.g., Tuya Gateway) to function. Ensure your Zigbee hub is powered on and connected to your network.

1. Open the Tuya Smart Life application on your smartphone.
2. Ensure your Zigbee hub is already added to the app.
3. In the app, navigate to your Zigbee hub's interface and select the option to 'Add device' or 'Search for new devices'.
4. On the Smart Remote Button, press and hold the main button for approximately 10 seconds until the indicator light flashes, indicating it is in pairing mode.
5. The app should detect the new device. Follow the on-screen prompts to complete the pairing process.
6. Once paired, you can rename the device and assign it to a specific room or group within the app.

The following video demonstrates the battery installation and pairing process:

Video 5.1: Demonstration of battery installation and pairing the Zigbee Smart Remote Button with a Tuya hub via the Smart Life app.

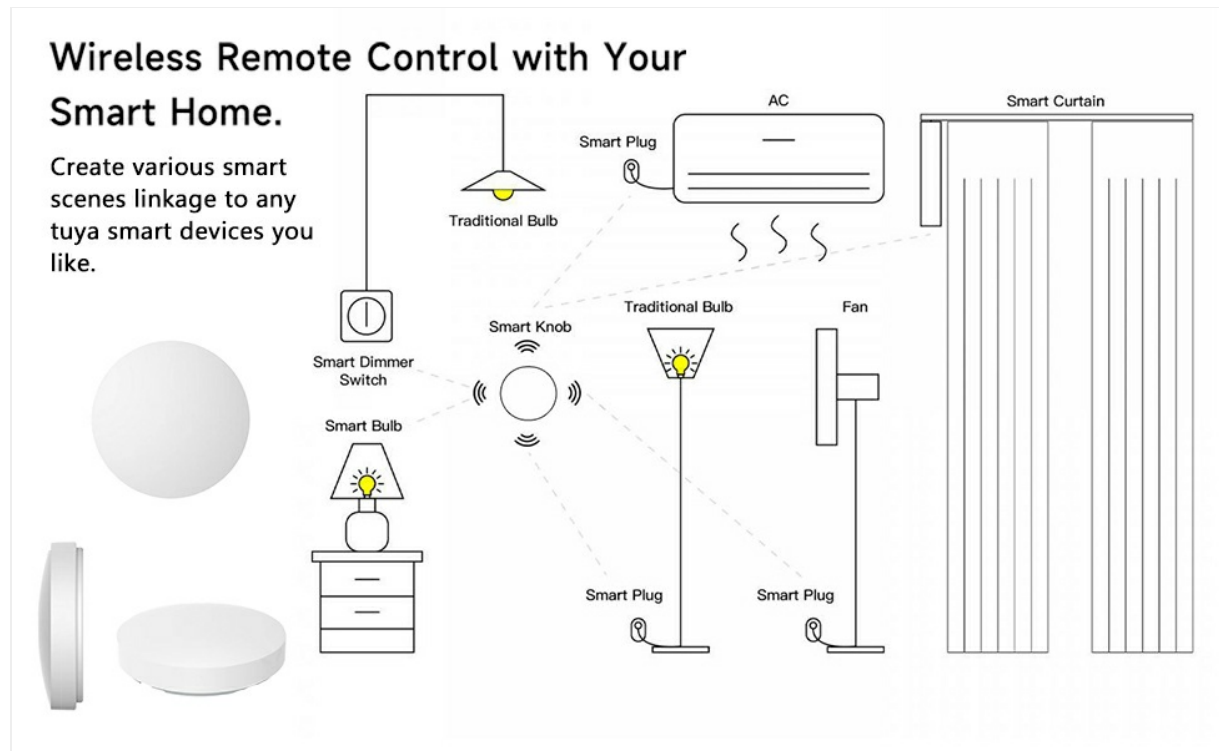


Figure 5.2: Diagram illustrating the connection of the Smart Remote Button to a Zigbee Gateway (Hub) for app and voice control.

6. OPERATION

The Smart Remote Button supports three distinct actions: single press, double press, and long press. Each action can be configured within the Tuya Smart Life app to trigger specific smart scenes or control individual devices.

6.1. Customizing Button Actions

After pairing, use the Tuya Smart Life app to define the functions for each button action:

1. Open the Tuya Smart Life app and select your Smart Remote Button.
2. Access the settings or automation section for the button.
3. You will find options to configure 'Single Press', 'Double Press', and 'Long Press'.
4. Select an action and choose the desired smart scene or device control (e.g., turn on/off lights, activate 'Away Mode', adjust smart plugs).
5. Save your configurations.

Double click for away mode.

Double press the knob button to turn off all your lights, air conditioners, fans and other electronic devices before leaving for work.



Figure 6.1: Configuring single, double, and long press actions within the Smart Life app to create various scene modes.

6.2. Example Scenarios

- **Single Press:** Turn on/off a specific Zigbee light bulb. For example, a single press can illuminate your bedroom light to a predefined setting.



Figure 6.2: A single press can be configured to power on a Zigbee bulb in a remote mode.

- **Double Press:** Activate an 'Away Mode' scene. This can be configured to turn off all lights, air conditioners, fans, and other electronic devices when you leave your home.



Figure 6.3: A double press can activate an 'away mode' to power off multiple devices.

- **Long Press:** Trigger a custom scene, such as 'Movie Night' (dimming lights, closing smart curtains) or 'Reading Mode' (adjusting specific lights to a comfortable brightness).

7. PLACEMENT AND INSTALLATION

The Smart Remote Button is designed for flexible placement. It can be placed on any flat surface or mounted to a wall using its adhesive backing.

1. Identify a suitable location for the button. Consider accessibility and proximity to frequently used areas.
2. Ensure the surface is clean and dry for optimal adhesive performance.
3. Peel off the protective film from the adhesive backing on the button.
4. Firmly press the button onto the desired surface for a few seconds to secure it.

Wireless controls move at will.



Figure 7.1: Examples of flexible placement options for the wireless Smart Remote Button.

8. MAINTENANCE

8.1. Battery Replacement

The Smart Remote Button uses one Lithium Ion battery. When the battery level is low, the device's performance may degrade, or it may stop responding. To replace the battery:

1. Gently twist the back cover of the button counter-clockwise to open the battery compartment.
2. Remove the old battery.
3. Insert a new Lithium Ion battery, ensuring the correct polarity (+/-).
4. Replace the back cover by twisting clockwise until it clicks securely into place.

8.2. Cleaning

To clean the device, use a soft, dry cloth. Do not use liquid cleaners or abrasive materials, as these can damage the device.

9. TROUBLESHOOTING

• Device not responding:

- Check the battery level and replace if necessary.
- Ensure the device is within range of your Zigbee hub.
- Verify that the Zigbee hub is powered on and connected to your network.
- Check the device status in the Tuya Smart Life app.

• Unable to pair the device:

- Ensure the device is in pairing mode (indicator light flashing after a long press).
- Confirm your Zigbee hub is in pairing mode within the Tuya Smart Life app.

- Move the device closer to the Zigbee hub during the pairing process.
- Reset the device by removing and reinserting the battery, then attempt pairing again.
- **Actions not triggering scenes:**
 - Verify that the scenes or device controls are correctly configured for each button action in the Tuya Smart Life app.
 - Ensure the target smart devices (lights, plugs, etc.) are online and responsive.

10. WARRANTY INFORMATION

Specific warranty details for the IHSENO ZigBee3.0 Smart Remote Button are not provided in the product information. Please refer to the retailer or manufacturer's official website for warranty terms and conditions.

11. SUPPORT

For technical assistance or further inquiries regarding your IHSENO ZigBee3.0 Smart Remote Button, please contact the seller or refer to the support section on the manufacturer's official website. Contact information is not provided in this manual.