

Philips 929002987403

Philips Vintage LED Tubular Light Bulb Instruction Manual

Model: 929002987403

- [Overview](#)
- [Setup](#)
- [Operating](#)
- [Maintenance](#)
- [Troubleshooting](#)
- [Specifications](#)
- [Warranty](#)
- [Support](#)

1. PRODUCT OVERVIEW

The Philips Vintage LED Tubular Light Bulb (Model 929002987403) is an amber spiral filament LED bulb designed for decorative and ambient lighting. This dimmable bulb provides a warm glow effect, allowing light levels to dim to the warm tones characteristic of traditional incandescent bulbs. It meets EyeComfort criteria, ensuring visual comfort. The bulb is energy-efficient, offering the aesthetic of vintage lighting with modern LED performance.



Figure 1: Front view of the Philips Vintage LED Tubular Light Bulb, showcasing its amber glass and spiral filament design.

2. SETUP AND INSTALLATION

This LED bulb is designed for easy installation into standard E26 base fixtures. Ensure the power to the fixture is turned off before installation to prevent electrical shock.

1. **Turn off Power:** Locate the light switch or circuit breaker controlling the fixture and turn it off.
2. **Remove Old Bulb:** Carefully unscrew the existing bulb from the fixture. Allow it to cool if it was recently in use.
3. **Install New Bulb:** Screw the Philips Vintage LED Tubular Light Bulb into the E26 base socket until it is snug. Do not overtighten.
4. **Restore Power:** Turn the power back on at the switch or circuit breaker.

The bulb is now ready for use. For optimal dimming performance, use with compatible LED dimmers.



Figure 2: The Philips Vintage LED Tubular Light Bulb installed in a table lamp, providing warm ambient lighting in a living room setting.

3. OPERATING INSTRUCTIONS

The Philips Vintage LED Tubular Light Bulb operates like a standard light bulb but offers dimmable functionality and energy efficiency.

- **Turning On/Off:** Use the wall switch or fixture switch to turn the bulb on or off.
- **Dimming:** If connected to a compatible dimmer switch, adjust the dimmer to control the light intensity. This bulb is designed to dim to warm tones, mimicking traditional incandescent bulbs.
- **EyeComfort:** This bulb meets Philips EyeComfort standards, providing light that is comfortable for your eyes.

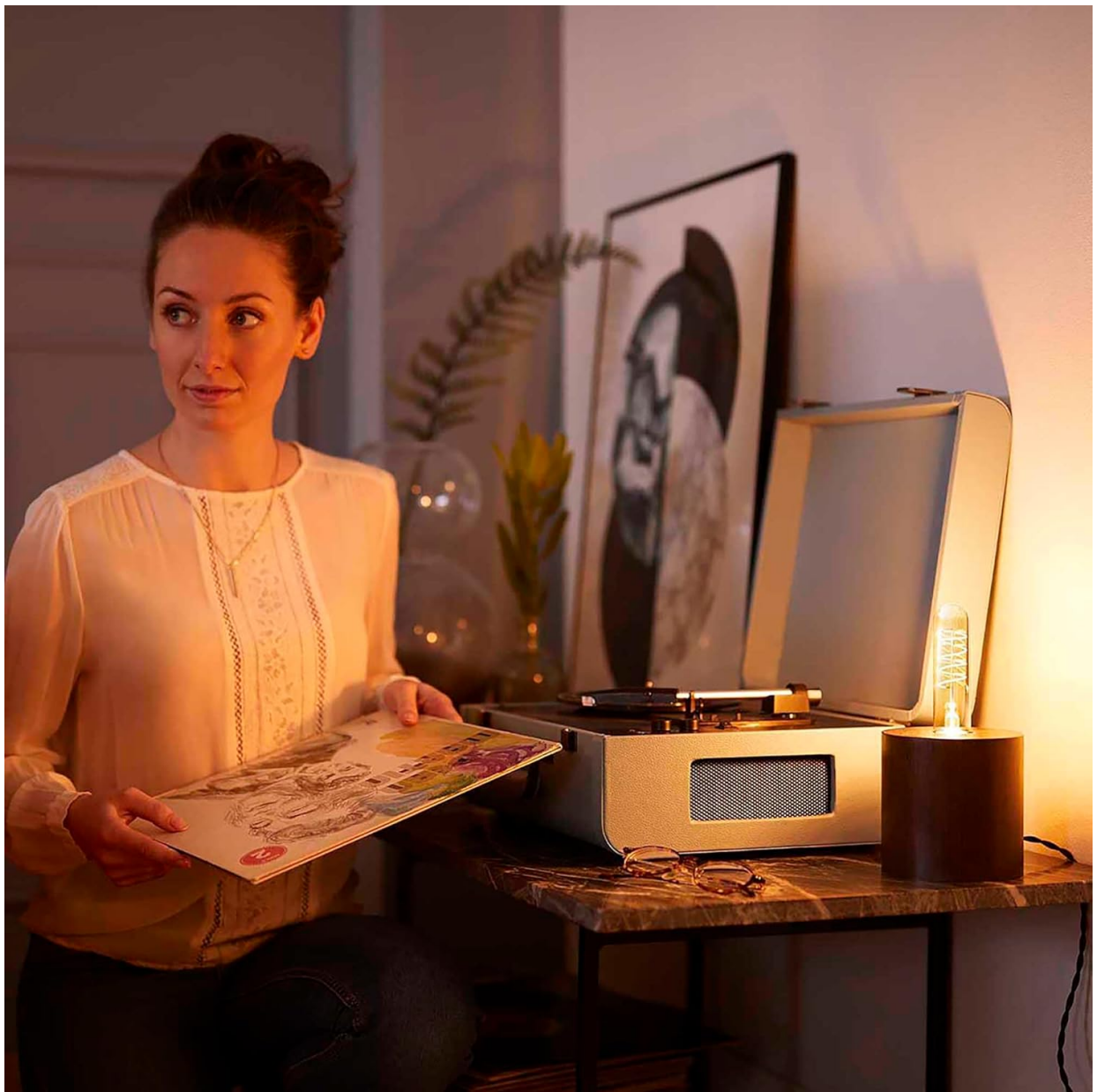


Figure 3: A woman enjoying the warm, ambient light provided by the Philips Vintage LED bulb in a decorative setting with a record player.

4. CARE AND MAINTENANCE

The Philips Vintage LED Tubular Light Bulb requires minimal maintenance. Follow these guidelines to ensure longevity and optimal performance:

- **Cleaning:** Ensure the power is off before cleaning. Wipe the bulb with a soft, dry cloth. Do not use liquid cleaners or abrasive materials, as these can damage the bulb's finish or electrical components.

- **Handling:** Handle the bulb by its base, not the glass, to avoid transferring oils from your skin, which can affect its appearance or performance over time.
- **Replacement:** LED bulbs have a long lifespan. When replacement is eventually needed, follow the installation steps in Section 2. Dispose of old bulbs according to local regulations for electronic waste.



Figure 4: Multiple Philips Vintage LED Tubular Light Bulbs used in a decorative hanging arrangement, illustrating their aesthetic appeal.

5. TROUBLESHOOTING

If you encounter issues with your Philips Vintage LED Tubular Light Bulb, refer to the following common problems and solutions:

| Problem | Possible Cause | Solution |
|-------------------------|---|--|
| Bulb does not light up. | No power to the fixture, bulb not screwed in properly, or bulb is faulty. | Check power supply. Ensure bulb is securely screwed into the socket. Test bulb in another working fixture. |

| Problem | Possible Cause | Solution |
|--------------------------------------|---|---|
| Bulb flickers or hums. | Incompatible dimmer switch, loose connection, or electrical interference. | Ensure dimmer is LED-compatible. Tighten bulb. Consult an electrician if flickering persists. |
| Light output is too low or too high. | Dimmer setting, or incorrect bulb for desired brightness. | Adjust dimmer. Verify bulb wattage and lumen output meet your lighting needs. |



Figure 5: A close-up view of the Philips Vintage LED Tubular Light Bulb, highlighting its intricate spiral filament design.

6. PRODUCT SPECIFICATIONS

| Feature | Detail |
|--------------|--------------|
| Brand | Philips |
| Model Number | 929002987403 |

| Feature | Detail |
|-------------------------|-------------------------------|
| Light Type | LED |
| Special Feature | Dimmable |
| Wattage | 3.5 watts |
| Incandescent Equivalent | 25 Watts |
| Bulb Base | E26 |
| Light Color | Amber |
| Color Temperature | 2000 Kelvin |
| Brightness | 225 Lumen |
| Voltage | 120 Volts (AC) |
| Shape | Tubular (T) |
| Material | Copper |
| Indoor/Outdoor Usage | Indoor |
| Product Dimensions | 1.81 x 1.26 x 4.06 inches |
| Item Weight | 1.76 ounces |
| Control Method | Touch (via compatible dimmer) |
| Efficiency | 64.29 lumens/watt |



Figure 6: Three Philips Vintage LED Tubular Light Bulbs suspended from the ceiling, creating a warm and inviting atmosphere in a room.

7. WARRANTY INFORMATION

Philips products are manufactured to the highest quality standards. This product is covered by a manufacturer's warranty. For specific warranty terms and conditions, please refer to the documentation included with your purchase or visit the official Philips website. Keep your proof of purchase for warranty claims.

8. CUSTOMER SUPPORT

For further assistance, technical support, or to report any issues with your Philips Vintage LED Tubular Light Bulb, please contact Philips customer service. You can find contact information on the official Philips website or through the support channels provided with your product packaging.



Figure 7: A dining area illuminated by multiple Philips Vintage LED bulbs, demonstrating their effectiveness in creating a cozy and functional lighting environment.