



[Manuals.plus](#) /

> [Senzooe](#) /

> Senzooe APO-C1 Brushless Motor Control Module User Manual

Senzooe APO-C1

Senzooe APO-C1 Brushless Motor Control Module User Manual

Model: APO-C1

1. INTRODUCTION

The Senzooe APO-C1 is a compact module designed for electrical analogue voltage control of brushless motors, producing a sine wave output. This manual provides essential information for the safe and effective use of your APO-C1 module, including setup, operation, maintenance, troubleshooting, and specifications.

2. PRODUCT OVERVIEW

The APO-C1 module integrates control circuitry for brushless motor applications. It features input terminals for power and control signals, and output terminals for motor connection. Its compact design makes it suitable for various embedded systems.

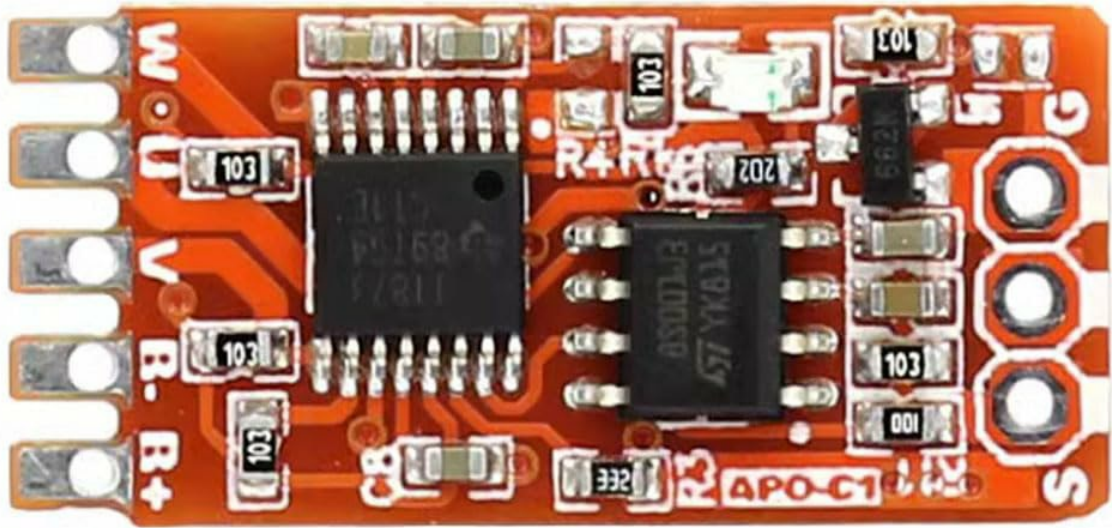


Figure 1: Top view of the APO-C1 module, highlighting the main integrated circuits and component layout.



Figure 2: Angled view of the APO-C1 module, illustrating the power conditioning capacitors.

3. SETUP AND WIRING

Proper connection is crucial for the functionality and safety of the APO-C1 module. Refer to the wiring diagram below for detailed instructions.

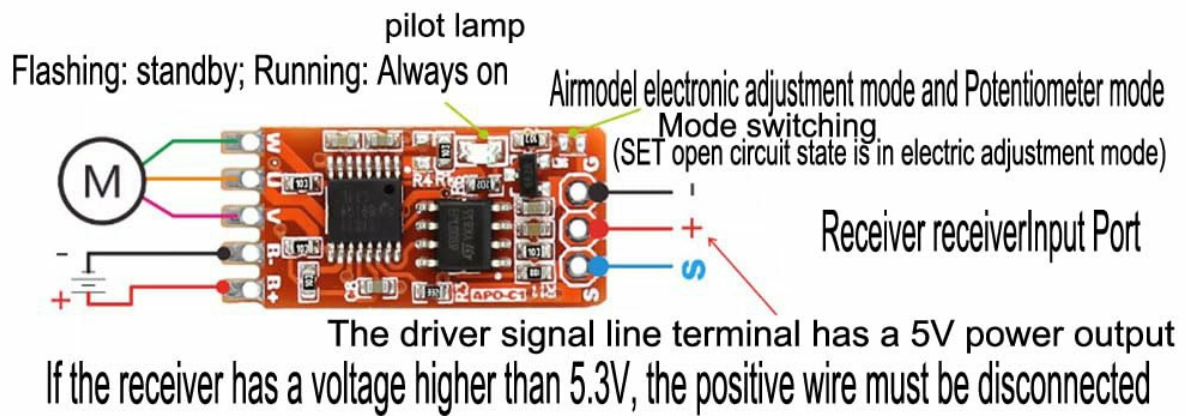


Figure 3: APO-C1 Wiring Diagram and Mode Switching.

3.1. Connection Points

- **M:** Motor output terminals. These are typically three wires for connecting to a brushless motor.
- **B+, B-:** Power input from a battery or external power supply. Ensure correct polarity is observed to prevent damage to the module.
- **S, +, -:** Receiver input port. The driver signal line terminal provides a 5V power output. **Important:** If the connected receiver has an operating voltage higher than 5.3V, the positive wire from this terminal must be disconnected to avoid potential damage to the receiver or the module.
- **SET:** Mode switching pin. An open circuit state on this pin corresponds to the