

Eureka NEW400 Accessory Kit

Eureka NEW400 Cordless Wet Dry Vacuum Accessory Kit Instruction Manual

Model: NEW400 Accessory Kit (Part Number: 12175000A41056)

[Introduction](#) [Compatibility](#) [Roller Brush](#) [Filters](#) [Maintenance](#) [Specifications](#)
[Troubleshooting](#) [Support](#)

1. INTRODUCTION

This instruction manual provides guidance for the proper installation, replacement, and maintenance of the Eureka NEW400 Cordless Wet Dry Vacuum accessory kit. This kit includes one specialized roller brush and two replacement filters, designed to maintain the optimal performance of your Eureka NEW400 vacuum cleaner.

Package Contents:

- 1 x Specialized Roller Brush
- 2 x Foam Filters

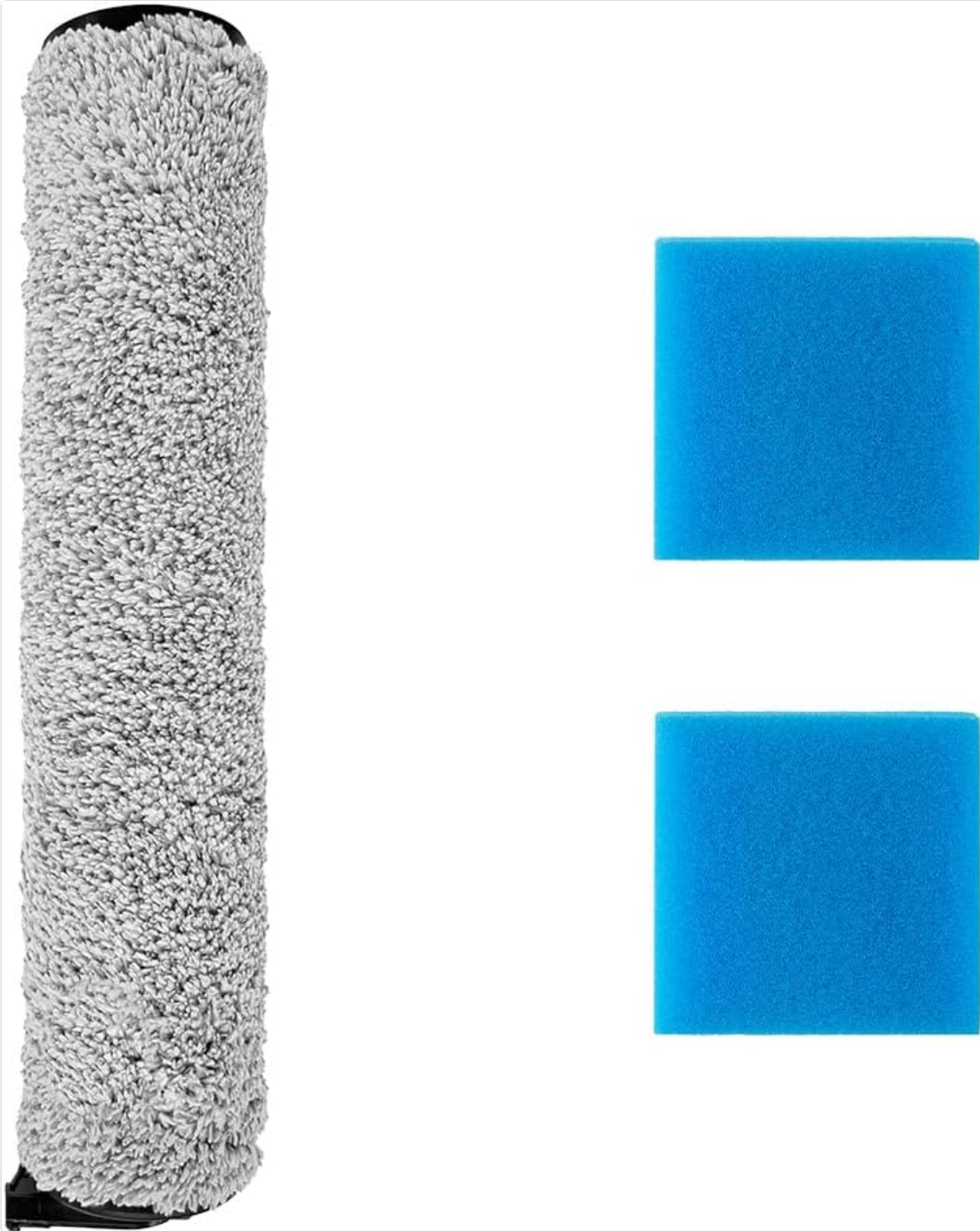


Image 1.1: Contents of the Eureka NEW400 Accessory Kit, including one roller brush and two foam filters.

2. COMPATIBILITY

Important: This accessory kit is specifically designed for the Eureka NEW400 Cordless Wet Dry Vacuum Cleaner. Ensure your vacuum model is NEW400 to guarantee proper fit and function. Using incompatible parts may damage your appliance or affect its performance.

3. ROLLER BRUSH INSTALLATION AND REPLACEMENT

Follow these steps to replace the roller brush in your Eureka NEW400 Cordless Wet Dry Vacuum Cleaner:

1. **Power Off:** Ensure the vacuum cleaner is turned off and unplugged from its charging base before proceeding.

2. **Access Brush Roll Cover:** Locate the brush roll cover on the vacuum head. It typically has a latch or button to release it. Open the cover.
3. **Remove Old Brush Roll:** Gently pull the old roller brush upwards and out of its compartment.
4. **Insert New Brush Roll:** Align the new roller brush with the slots in the vacuum head. Push it down firmly until it clicks into place.
5. **Close Cover:** Close the brush roll cover securely.



HOW TO REPLACE THE ROLLER BRUSH

Image 3.1: Visual guide for replacing the roller brush. First, open the brush roll cover, then pull the old brush upwards to remove it.

4. FILTER INSTALLATION AND REPLACEMENT

Follow these steps to replace the foam filters in your Eureka NEW400 Cordless Wet Dry Vacuum Cleaner:

1. **Power Off:** Ensure the vacuum cleaner is turned off and unplugged from its charging base.
2. **Locate Filter Compartment:** Identify the filter compartment, typically located within the dirty water tank or a dedicated filter housing.
3. **Remove Old Filters:** Open the filter housing and carefully remove the old foam filters. Note their orientation.
4. **Insert New Filters:** Place the new foam filters into the housing, ensuring they are correctly

seated. The image indicates placing the filter sponge upward.

5. **Close Compartment:** Close the filter housing securely.

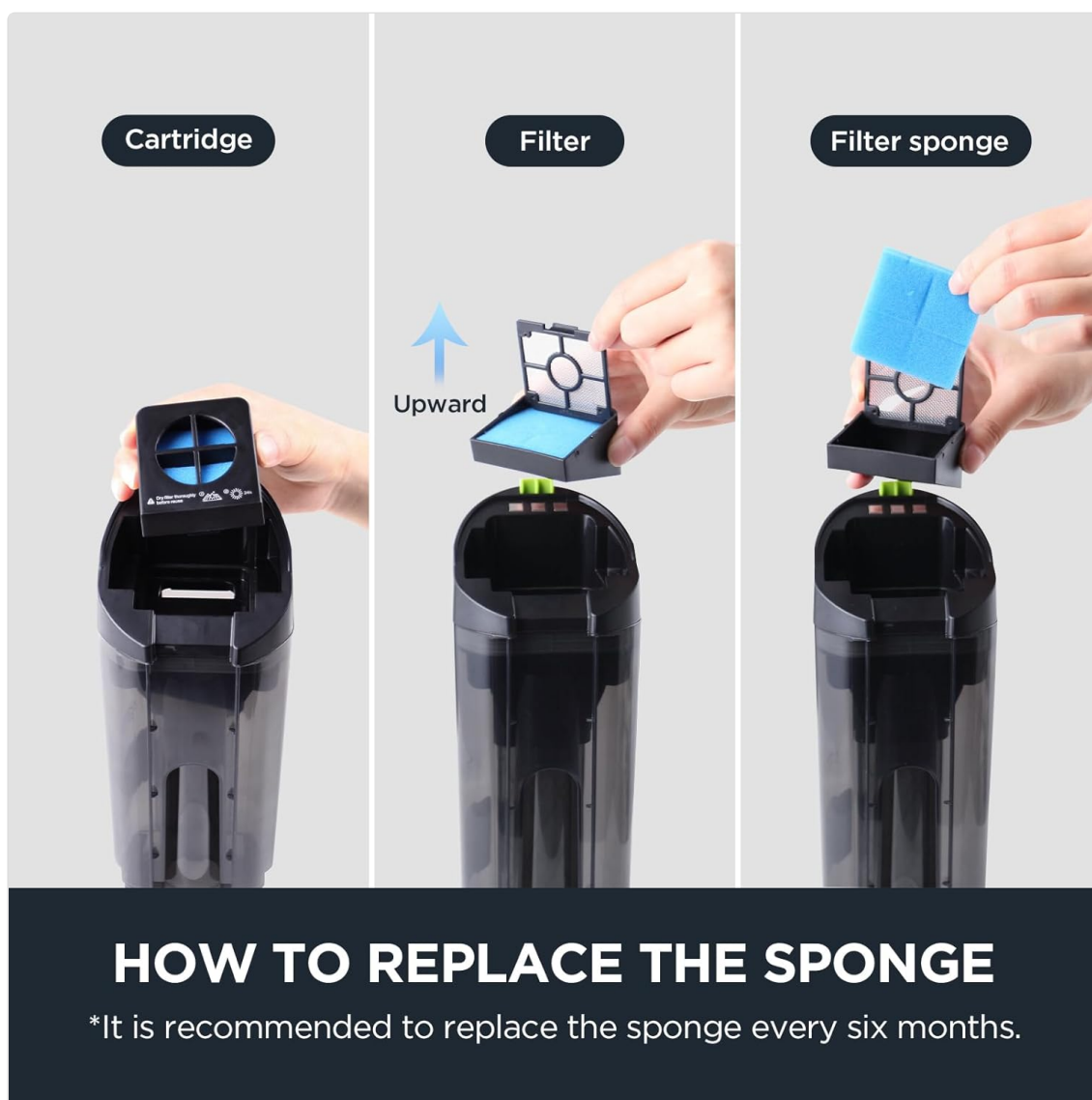


Image 4.1: Step-by-step guide for replacing the filter sponge. The filter cartridge is shown, followed by the removal of the old filter and insertion of the new filter sponge.

5. MAINTENANCE AND REPLACEMENT SCHEDULE

Regular replacement of the roller brush and filters is crucial for maintaining the cleaning efficiency and longevity of your Eureka NEW400 Cordless Wet Dry Vacuum Cleaner.

- **Roller Brush:** It is recommended to replace the roller brush every 6 months with normal use. Inspect the brush regularly for wear, damage, or excessive debris accumulation that cannot be cleaned.
- **Foam Filters:** It is recommended to replace the foam filters every 6 months with normal use. Clogged or dirty filters can reduce suction power and affect cleaning performance.

For optimal performance, clean the roller brush and filters after each use as per your vacuum cleaner's main instruction manual.

6. SPECIFICATIONS

Feature	Detail
Product Name	Eureka NEW400 Cordless Wet Dry Vacuum Specialized Accessories Kit
Model Compatibility	Eureka NEW400 Cordless Wet Dry Vacuum Cleaner
Part Number	12175000A41056
Package Contents	1 x Roller Brush, 2 x Foam Filters
Package Dimensions	10.51 x 5.35 x 2.2 inches
Item Weight	7 ounces
Manufacturer	EUREKA
Batteries Required	No

7. TROUBLESHOOTING

If you encounter issues after replacing your accessories, consider the following:

- **Accessory Does Not Fit:** Double-check that your vacuum cleaner is indeed the Eureka NEW400 model. This accessory kit is specifically designed for this model.
- **Reduced Suction Power:** Ensure filters are correctly installed and not clogged. If filters are new, check the main vacuum unit for other potential issues as per its instruction manual.
- **Roller Brush Not Spinning:** Verify the roller brush is properly seated and the brush roll cover is securely closed. Check for any obstructions around the brush.
- **Unusual Noises:** Ensure all parts are correctly installed and there are no foreign objects caught in the brush roll area.

For further assistance, refer to your Eureka NEW400 Cordless Wet Dry Vacuum Cleaner's main instruction manual or contact Eureka customer support.

8. WARRANTY AND SUPPORT

For information regarding the warranty of your Eureka NEW400 Cordless Wet Dry Vacuum Cleaner and its accessories, please refer to the warranty card included with your original vacuum purchase or visit the official Eureka website.

For technical support, replacement parts, or service inquiries, please contact Eureka Customer Service:

- **Website:** www.eureka.com (Please check the official website for the most current contact information.)
- **Customer Service:** Refer to the contact section on the Eureka website or your original product manual.

