

Manuals.plus /

- › Goody King /
- › Goody King 100-Piece Magnetic Building Cubes (Model T076) Instruction Manual

Goody King T076

Goody King 100-Piece Magnetic Building Cubes

Model: T076
Brand: Goody King

1. INTRODUCTION

The Goody King 100-Piece Magnetic Building Cubes are designed to foster creativity and develop problem-solving skills in children aged 3 and above. This set includes 100 magnetic cubes with 19 distinct designs, offering limitless possibilities for building and imaginative play. The cubes feature strong magnets for stable constructions and are made from durable, high-quality materials.

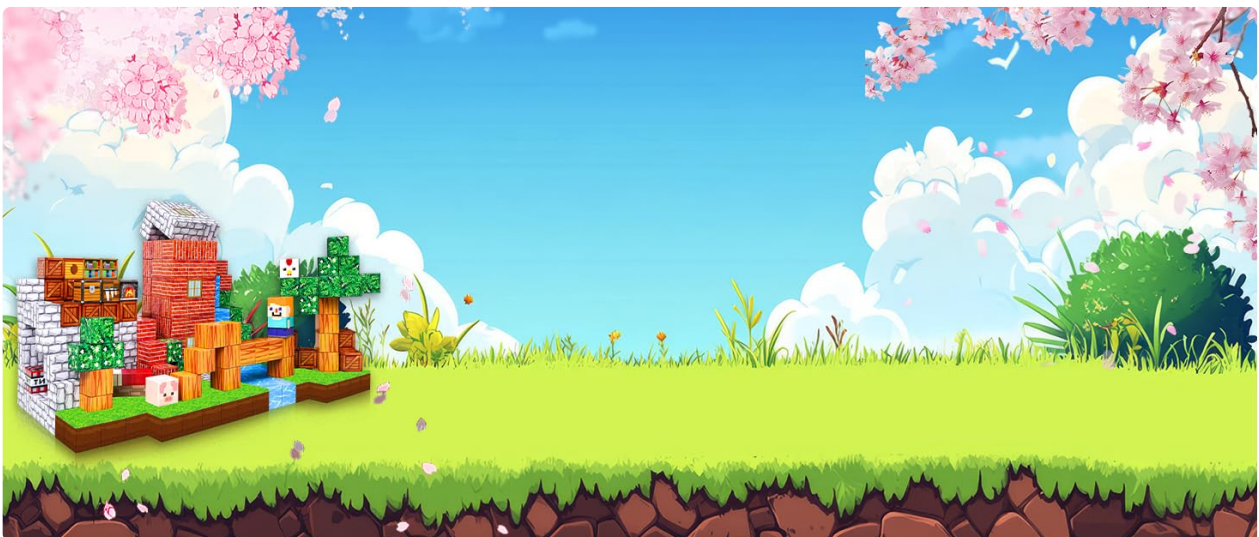


Image: An example of a creative world built using Goody King Magnetic Building Cubes.

2. SAFETY INFORMATION

WARNING: CHOKING HAZARD - Small Parts. Not for children under 3 years.

- Always supervise young children during play.
- Ensure all pieces are accounted for after play to prevent loss or accidental ingestion.
- Inspect blocks regularly for any damage. Discontinue use if any blocks are broken or magnets are exposed.

3. PACKAGE CONTENTS

Your Goody King Magnetic Building Cubes set includes the following 100 pieces:



Image: The product box illustrating the 100 pieces and their distribution.

- Chest x 1
- Bookshelf x 3
- Crate x 8
- Bed x 1
- Table x 1
- Beehive x 1
- Flower x 2

- Leaf x 8
- Tree x 7
- Grass x 17
- Water x 8
- Guy x 1 (character block)
- Piggy x 1 (character block)
- Chick x 1 (character block)
- Window x 3
- Brick x 17
- Stone x 16

4. SETUP

1. **Unpack:** Carefully remove all magnetic cubes from the packaging.
2. **Prepare Play Area:** Choose a clean, flat, and stable surface for building. The inside of the product box can also serve as a play mat.
3. **Familiarize:** Allow children to explore the different block designs and feel the magnetic connections.

5. OPERATING INSTRUCTIONS

The Goody King Magnetic Building Cubes offer versatile and engaging play. Their strong magnets allow for easy connection and stable structures, encouraging children to build with confidence.

Support All Below Scene



Image: Multiple examples of structures and scenes that can be created with the magnetic cubes.

Building and Play

- **Connect Cubes:** Simply bring two or more cubes together. The internal magnets will align and connect them securely.
- **Create Structures:** Build houses, landscapes, characters, or anything your imagination desires. The cubes can be stacked vertically, horizontally, or at angles.
- **Explore Designs:** Use the 19 distinct designs to add detail and variety to your creations, such as brick walls, grassy areas, water features, and character faces.
- **Educational Play:** These blocks are excellent tools for STEM learning, promoting creative thinking, construction skills, hand-eye coordination, and motor skills.



Image: Illustration of the cubes' flexible and neat alignment, strong magnets, and various play methods.

Official Product Videos

Goody King 100PCS Forests Magnetic Blocks

Your browser does not support the video tag.

Video Description: An official video from Goody King showcasing the 100-piece Forests Magnetic Blocks set, demonstrating its components and potential for creative building.

Forest magnetic blocks allow for unlimited creative building

Your browser does not support the video tag.

Video Description: An official video from Goody King highlighting the versatility and endless creative possibilities of the Forest magnetic blocks, showing various structures being built.

6. MAINTENANCE

- **Cleaning:** Wipe the magnetic cubes with a soft, damp cloth. Do not immerse in water or use harsh cleaning agents.

- **Storage:** Store the blocks in their original box or a designated container in a dry place, away from direct sunlight and extreme temperatures, to maintain their quality and magnetic strength.

7. TROUBLESHOOTING

- **Blocks not sticking:** Ensure the surfaces of the blocks are clean and free from dust or debris. The magnets are designed to be strong, so proper contact should result in a secure connection.
- **Missing pieces:** Refer to the 'Package Contents' section. If any pieces are missing upon initial unboxing, please contact Goody King customer support.

8. SPECIFICATIONS

Feature	Detail
Brand Name	Goody King
Model Name	T076
Model Number	T076
UPC	751654602514
Age Range Description	3+
Number of Pieces	100
Item Dimensions	8 x 4 x 2 inches
Item Weight	16 ounces
Material Type	Plastic, Sensory Material
Educational Objective	Creative Thinking, Construction Skills, Hand-Eye Coordination, Motor Stacking Problem Solving Skills
Operation Mode	Manual
Is Assembly Required	No

9. WARRANTY AND SUPPORT

For warranty information, product support, or to inquire about replacement parts, please contact Goody King customer service. Refer to the product packaging for the most current contact details or visit the official Goody King store on Amazon: [Goody King Store](#).