

## Kreo Chimera

# Kreo Chimera RGB Wireless Gaming Mouse User Manual

Model: Chimera | Brand: Kreo

## 1. INTRODUCTION

The Kreo Chimera RGB Wireless Gaming Mouse is designed for gamers seeking high performance, customization, and comfort. Featuring hot-swappable switches, interchangeable shells, and programmable buttons, this mouse offers a tailored gaming experience. Its adjustable DPI up to 10000 ensures precision and speed for various gaming styles.



Image: The Kreo Chimera mouse with its components laid out, highlighting its modular design.

## 2. PACKAGE CONTENTS

---

- Kreo Chimera RGB Wireless Gaming Mouse
- Hot-swappable Switches (Tactile and Silent options)
- Interchangeable Shells (Regular and Honeycomb options)
- USB Receiver (Dongle)
- USB Charging Cable
- User Manual (This document)

## 3. SETUP GUIDE

---

### 3.1. Initial Charging

Before first use, connect the mouse to a USB power source using the provided USB charging cable. The RGB lighting will indicate charging status. A full charge ensures optimal wireless performance.

## 3.2. Connecting the Mouse

The Kreo Chimera mouse supports multiple connection modes: 2.4GHz Wireless (via USB dongle), Bluetooth, and Wired (via USB cable).

### 3.2.1. 2.4GHz Wireless Connection

1. Locate the USB receiver (dongle) stored within the mouse.
2. Plug the USB receiver into an available USB port on your computer.
3. Turn on the mouse using the power switch located on the underside.
4. The mouse should automatically connect. If not, press the pairing button (if available) or refer to the software for pairing instructions.

### 3.2.2. Bluetooth Connection

1. Turn on the mouse and switch to Bluetooth mode (refer to mouse underside for mode switch).
2. On your computer, navigate to Bluetooth settings and search for new devices.
3. Select "Kreo Chimera" from the list of available devices to pair.

### 3.2.3. Wired Connection

Connect the mouse directly to your computer using the provided USB charging cable. The mouse will function in wired mode and charge simultaneously.

## 4. OPERATING INSTRUCTIONS

---

### 4.1. Basic Functionality

The Kreo Chimera mouse operates like a standard computer mouse with left-click, right-click, and scroll wheel functions. Additional programmable buttons enhance its utility for gaming and productivity.

### 4.2. Adjustable DPI

The mouse features 6 adjustable DPI levels ranging from 200 to 10000. Use the dedicated DPI button (usually located behind the scroll wheel) to cycle through the preset DPI settings. Higher DPI values result in faster cursor movement, while lower values provide greater precision.

# ADJUSTABLE DPI

CUSTOMIZE BETWEEN DPI LEVELS TO ACE EVERY GAME



Image: Adjustable DPI levels from 200 to 10000 for precise control.

## 5. CUSTOMIZATION FEATURES

### 5.1. Hot-swappable Switches

The Kreo Chimera allows you to change the left and right mouse button switches. This feature enables you to choose between tactile (clicky) or smooth (silent) switch types based on your preference. The product includes both types of switches.

# HOT SWAPPABLE HUANO SWITCHES

CHANGE BETWEEN **SILENT** AND **TACTILE** SWITCHES

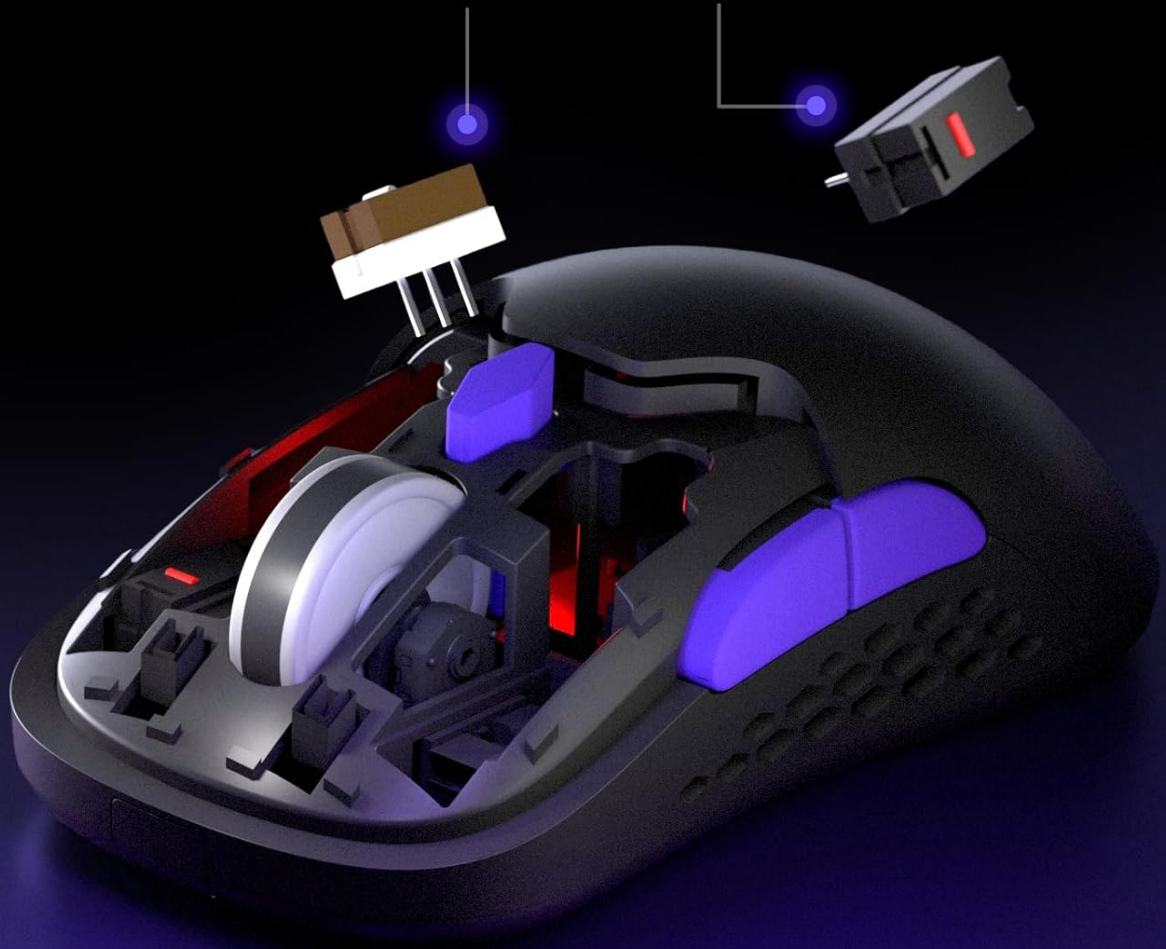


Image: Hot-swappable Huano switches, allowing users to switch between silent and tactile feedback.

## 5.2. Interchangeable Shells

Personalize your mouse's grip and aesthetics by swapping between the included regular (solid) and honeycomb shells. This allows for optimal comfort and weight distribution.



# PICK YOUR GRIP

CHOOSE BETWEEN SOLID OR HONEYCOMB GRIP



Image: The mouse with its top cover removed, illustrating the choice between solid and honeycomb grip shells.

## 5.3. Programmable Buttons

The Kreo Chimera mouse features 7 programmable buttons. These buttons can be customized using the free Kreo Chimera software to assign macros, keybinds, or specific functions, enhancing your gaming and productivity workflows.

## 5.4. Programmable RGB Lighting

Customize the RGB lighting of your mouse to match your gaming setup or personal preference. The lighting effects and colors can be adjusted through the Kreo Chimera software.

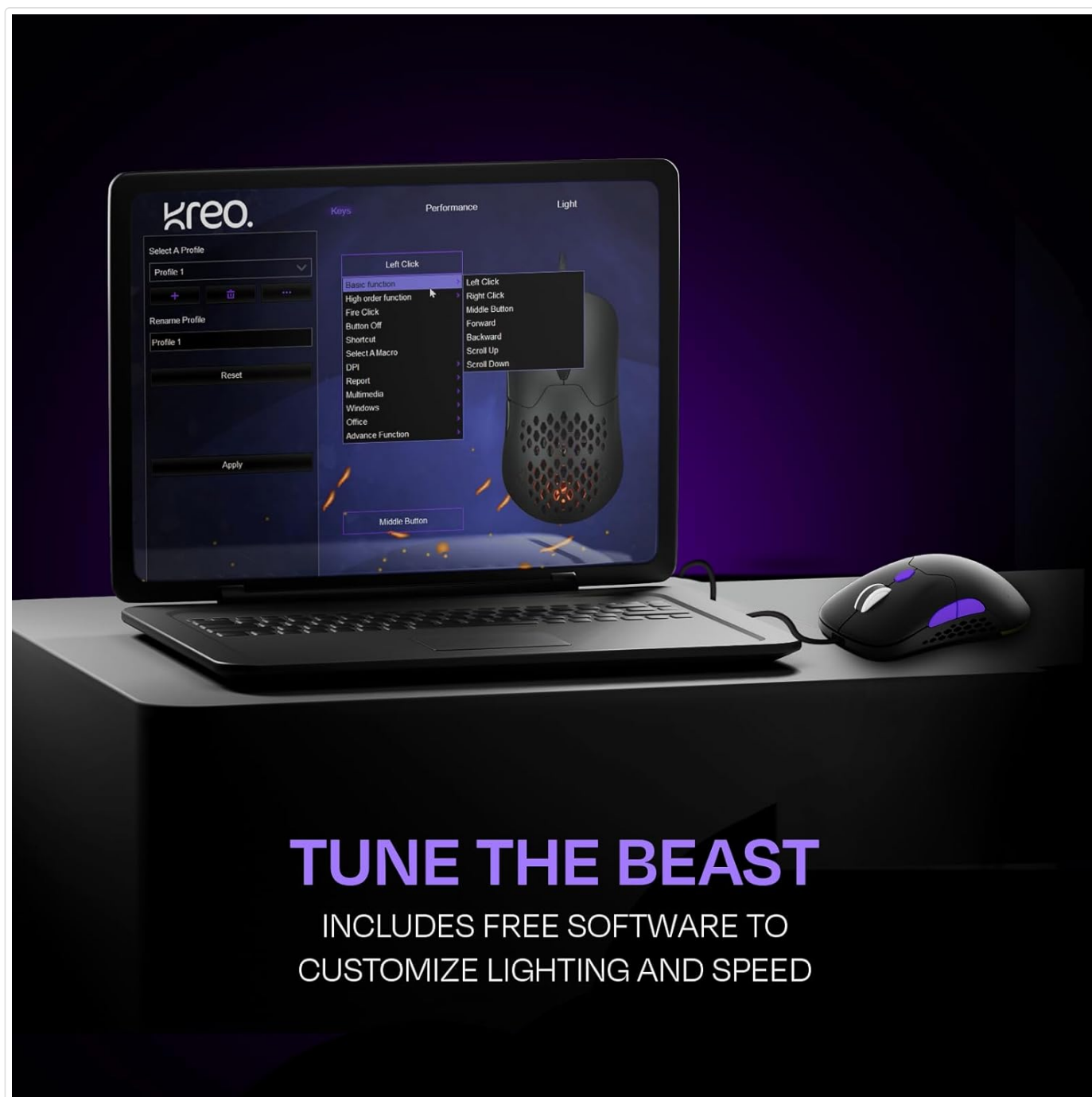


Image: The Kreo Chimera software interface, allowing users to customize lighting, button functions, and performance settings.

## 6. MAINTENANCE

- **Cleaning:** Use a soft, dry cloth to clean the mouse surface. For stubborn dirt, a slightly damp cloth can be used, ensuring no liquid enters the mouse.
- **Sensor Care:** Keep the optical sensor on the underside of the mouse clean and free from dust or debris to ensure accurate tracking.
- **Storage:** When not in use for extended periods, store the mouse in a cool, dry place.
- **Battery Life:** To maximize battery lifespan, avoid fully discharging the mouse frequently. Charge it when the battery indicator suggests low power.

## 7. TROUBLESHOOTING

Problem	Possible Cause	Solution
---------	----------------	----------

Problem	Possible Cause	Solution
Mouse not responding (Wireless)	Low battery; USB receiver not connected; Mouse not paired.	Charge the mouse; Ensure USB receiver is securely plugged in; Re-pair the mouse via software or pairing button.
Laggy or erratic cursor movement	Dirty optical sensor; Interference; USB receiver too far from mouse.	Clean the optical sensor; Move the USB receiver closer to the mouse (e.g., use a USB extension cable); Ensure no strong wireless interference sources nearby.
Buttons not functioning	Software conflict; Incorrect button assignment.	Restart your computer; Check button assignments in the Kreo Chimera software; Ensure switches are properly seated if recently swapped.
RGB lighting not working	Lighting turned off in software; Software issue.	Check RGB settings in the Kreo Chimera software; Reinstall software if necessary.

## 8. SPECIFICATIONS

**Brand:** Kreo

**Model:** Chimera

**Connectivity:** 2.4GHz Wireless, Bluetooth, USB Wired

**DPI Range:** 200 - 10000 DPI (Adjustable)

**Buttons:** 7 Programmable Buttons

**Switches:** Hot-swappable (Huano, compatible with TTC, Omron, Kailh, etc.)

**Shells:** Interchangeable (Solid and Honeycomb)

**Lighting:** Programmable RGB

**Sensor:** Optical (Pixart 3325)

**Hand Orientation:** Ambidextrous

**Product Dimensions:** 11.3 x 7.3 x 0.1 cm

**Item Weight:** 120 g

**Operating System Compatibility:** Windows 7 and above

**Power Source:** Rechargeable Battery

**Battery Average Life:** 12 Months (usage dependent)

## 9. WARRANTY AND SUPPORT

Kreo products are designed for durability and performance. For warranty information and technical support, please contact Kreo customer service.

**Manufacturer:** Kreo

**Address:** Sy No. 37, 38, 39, 5, 4, Obalapura Village, Anagondanahalli Hobli, Hoskote, Taluk Bangalore Karnataka India 560067

**Phone:** +919322168777

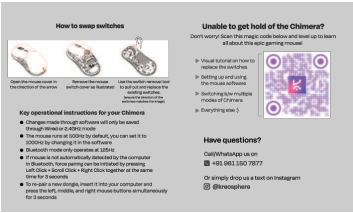
**Email:** [help@kreo-tech.com](mailto:help@kreo-tech.com)

Please retain your proof of purchase for warranty claims.





Documents - Kreo – Chimera

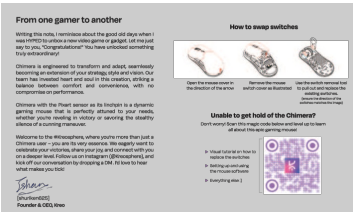


[pdf] User Manual Instructions

Chimera brand manual 1 Recovered Download User Manual Downloads Kreo v 1728939905 cdn shopify s files 0619 4325 1121 |||

Key operational instructions for your **Chimera** ...

lang: score:31 filesize: 882.95 K page\_count: 2 document date: 2024-10-14



[pdf] User Manual

Download User Manual Downloads Kreo chimera wired v 1729114549 cdn shopify s files 1 0619 4325 1121 |||

...

lang: score:22 filesize: 489.31 K page\_count: 2 document date: 2024-10-16