

HOCO EQ3 EARBUDS

HOCO EQ3 True Wireless Earbuds User Manual

Model: EQ3 EARBUDS

INTRODUCTION

Thank you for choosing the HOCO EQ3 True Wireless Earbuds. This manual provides detailed instructions on how to set up, operate, and maintain your earbuds to ensure optimal performance and longevity. Please read this manual carefully before using the product.



Image: HOCO EQ3 True Wireless Earbuds in their charging case, showcasing the transparent lid and compact design.

Safety Information

- Do not disassemble or modify the product.
- Keep the earbuds and charging case away from extreme temperatures, humidity, and liquids.
- Avoid prolonged exposure to high volume levels to prevent hearing damage.
- Clean the earbuds regularly as instructed in the maintenance section.
- Dispose of the product responsibly according to local regulations.

Package Contents

Verify that all items are present in your package:

- HOCO EQ3 True Wireless Earbuds (Left and Right)
- Charging Case
- USB-C Charging Cable

- Ear Cushions (XS/S/M/L sizes)
- User Manual (this document)

Product details

Smart



Product parameters

Smart

Product name: EQ3 Smart true wireless BT headset	
BT specification 5.3	Speaker 6mm
Headset battery 40mAh	Case battery 300mAh
Use time 7h	Standby time 150h
Product net weight 43g	Single headset weight 4g
Product size 60*49.5*27mm	Product color Milky white/white/purple/black

Image: Visual representation of the product details, including the USB-C charging port, lanyard hole, and various ear cap sizes.

PRODUCT OVERVIEW

The HOCO EQ3 earbuds feature a transparent charging case with an intelligent digital power display. The earbuds are designed for a comfortable, semi-in-ear fit and offer high-fidelity sound.

Key Features:

- Bluetooth 5.3 for stable and quick connectivity.
- Transparent charging case with digital power display.
- Touch controls for easy operation.
- Up to 7 hours of use time for earbuds, 28 hours total with charging case.
- Water-resistant design.
- Support for master-slave switching and voice assistant activation.

hoco.

premium
product

EQ3

Transparent capsule 28 hours of listening

Smart

Single headset battery life 7h | BT 5.3



7h Single headset battery life
28h Total working time



Transparent
capsule



Hi-Fi Sound quality

High-fidelity dynamic coil unit, the bass is solid and stable



BT 5.3

Lower power consumption



LED digital display



Magnetic switch

Automatic pairing



Lightweight

XS/M/XL



TWS stereo

Touch
control



Trendy and colorful

Milky white/white/purple/black



Image: Infographic highlighting key features such as 28 hours total listening time, Hi-Fi sound quality, Bluetooth 5.3, LED digital display, magnetic switch, lightweight design, TWS stereo, and touch control.

SETUP

1. Charging the Earbuds and Case

1. Place the earbuds into the charging case. Ensure they are correctly seated.
2. Connect the USB-C charging cable to the charging port on the case and plug the other end into a USB power adapter (not included).
3. The digital display on the case will show the charging status. A full charge is indicated when the display shows 100%.
4. It is recommended to fully charge the earbuds and case before first use.

2. Pairing with Your Device

1. Open the charging case. The earbuds will automatically enter pairing mode, and their indicator lights will flash.

2. On your device (smartphone, tablet, etc.), enable Bluetooth.
3. Search for "HOCO EQ3" in the list of available Bluetooth devices.
4. Select "HOCO EQ3" to connect. Once connected, the earbud indicator lights will turn off, and you will hear a confirmation tone.
5. The earbuds support master-slave switching, meaning either earbud can be used independently.

Connect when you open the cover

Smart

The magnetic absorption, it can return to position in an instant with a click.



High fidelity sound

Smart

High-fidelity dynamic coil unit, the bass is solid and stable, and the treble is translucent.



Image: Illustration showing the earbuds connecting to a smartphone automatically upon opening the charging case, emphasizing the magnetic absorption feature.

OPERATING INSTRUCTIONS

Wearing the Earbuds

Select the appropriate ear tip size (XS/S/M/L) for a comfortable and secure fit. Gently insert the earbuds into your ear canal and rotate them slightly until they feel snug and stable.

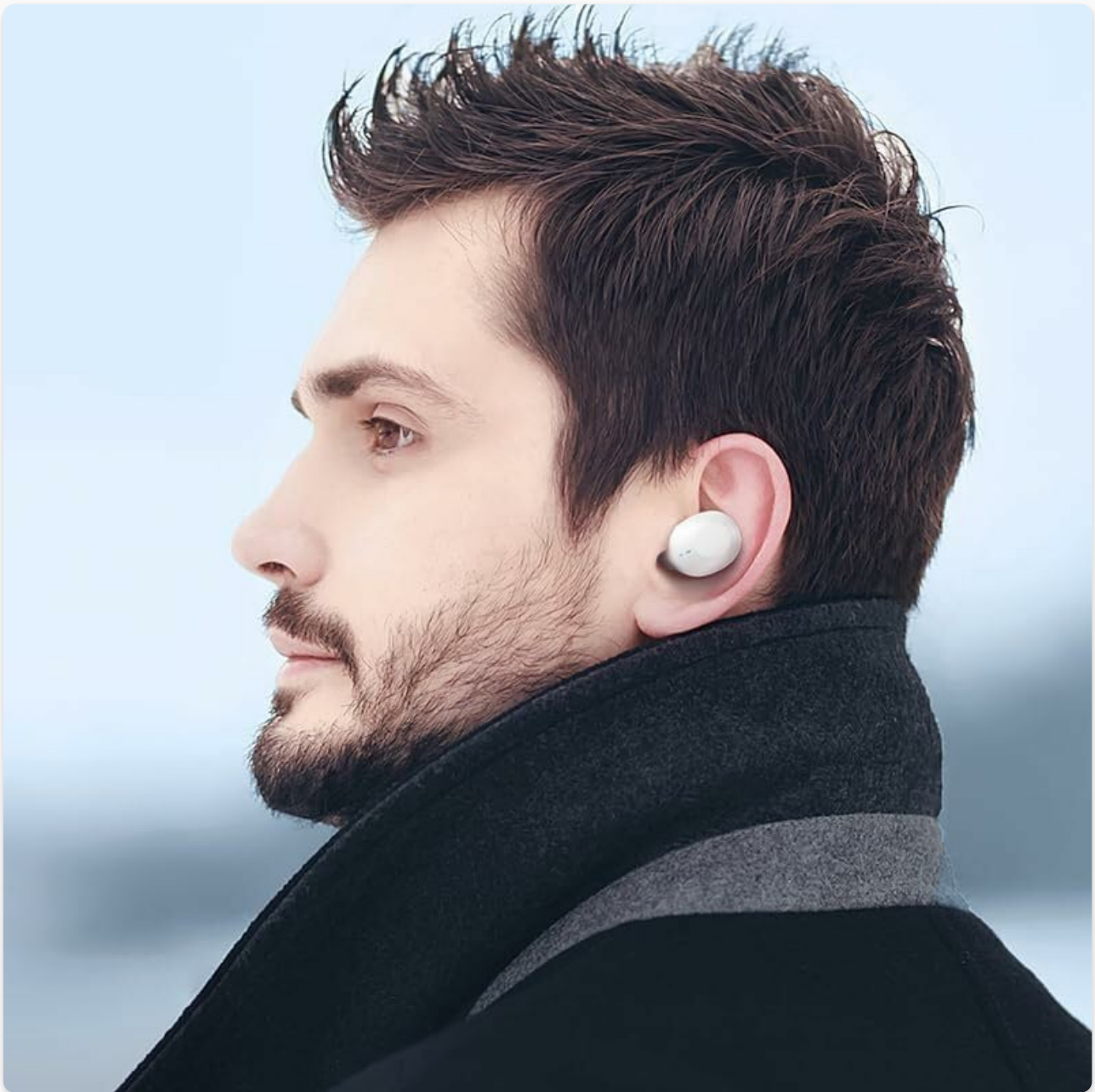


Image: A person wearing the HOCO EQ3 earbuds, demonstrating their discreet and comfortable fit.

Touch Controls

The HOCO EQ3 earbuds feature intuitive touch controls on each earbud. The functions are as follows:

Action	Function
Tap the touch area (L/R)	Play/Pause music
Double tap the touch area (L/R)	Next track
Triple tap the touch area (L/R)	Previous track
Long press the touch area for 2 seconds (L/R)	Activate Voice Assistant (Siri, Google Assistant, etc.)
Tap the touch area (L/R) during a call	Answer/End call

Action	Function
Long press the touch area for 2 seconds (L/R) during a call	Reject call

BT 5.3 high-speed connection

Smart

BT5.3 has lower power consumption,
lower latency and more stable connection.



Control at your fingertips

Smart

A variety of functional operations can be
realized with one touch, simple and convenient.



L/R

Tap the
touch area
Play/Pause

L/R

Double tap
the touch area
Next track

L/R

Triple tap
the touch area
Prev track

L/R

Long press the
touch area for 2s
Voice assistant activation

Image: Detailed guide on touch controls for the HOCO EQ3 earbuds, illustrating single, double, triple tap, and long press functions.

MAINTENANCE

Cleaning

- Use a soft, dry, lint-free cloth to clean the earbuds and charging case.
- For ear tips, remove them from the earbuds and wash with mild soap and water. Ensure they are completely dry before reattaching.
- Do not use abrasive cleaners, alcohol, or chemical solvents.
- Regularly clean the charging contacts on both the earbuds and the case to ensure proper charging.

Storage

- When not in use, always store the earbuds in their charging case to protect them and keep them charged.
- Store the product in a cool, dry place, away from direct sunlight and extreme temperatures.

TROUBLESHOOTING

Problem	Possible Solution
Earbuds not pairing with device.	Ensure earbuds are charged. Turn off and on Bluetooth on your device. Forget "HOCO EQ3" from your device's Bluetooth list and re-pair.
Only one earbud working.	Place both earbuds back into the charging case, close the lid, wait a few seconds, then open the lid again. Ensure both earbuds are charged.
Earbuds not charging.	Check the charging cable and adapter. Ensure the charging contacts on both earbuds and case are clean and free of debris.
Low volume or poor sound quality.	Adjust volume on your device. Ensure ear tips are properly sealed in your ear. Clean ear tips and earbud mesh.
Touch controls not responding.	Ensure your fingers are clean and dry. Try resetting the earbuds by placing them in the case and closing the lid.

SPECIFICATIONS

Feature	Detail
Model Name	EQ3 EARBUDS
Bluetooth Version	5.3
Bluetooth Chip	JL AC6983D2
Earbud Battery Capacity	40mAh
Charging Case Battery Capacity	300mAh
Single Earbud Use Time	7 hours
Total Playtime (with case)	28 hours
Standby Time	150 hours
Charging Case Dimensions	60 x 49.5 x 27 mm
Total Weight (Earbuds + Case)	43g
Water Resistance Level	Water Resistant
Control Type	Touch Control
Included Components	Cable, Ear Cushions, Protective Case, Wireless Charging Case

28h long battery life

Smart

With a 300mAh large-capacity charging case, the battery life can be up to 28h.



3
Number of
recharges

7_h
Single headset
battery

28_h
Total working
time

150_h
Standby time

Note: The above data comes from hoco. lab. and, based on objective factors, the data will be slightly different.

Light feeling and easy to wear

Smart

Semi-in-ear, easy to wear without feeling, comfortable to wear for a long time, without pain.



Image: Visual detailing the 28-hour long battery life with the charging case and the lightweight, comfortable design of the semi-in-ear earbuds.

WARRANTY AND SUPPORT

The HOCO EQ3 True Wireless Earbuds come with a standard manufacturer's warranty. For specific warranty terms and conditions, please refer to the warranty card included in your package or contact HOCO customer support. For technical support, troubleshooting assistance, or warranty claims, please contact HOCO customer service through their official website or the contact information provided with your purchase.

Note: An extended warranty for 1 year is available for purchase separately. Please check Amazon product page for details.