

MOD LIGHTING Haylen

MOD LIGHTING Haylen 12-inch Dimmable LED Outdoor Wall Light Instruction Manual

Model: Haylen (MOD000-BK-12-DM)

Thank you for choosing MOD LIGHTING. Please read this manual carefully before installation and use.

1. IMPORTANT SAFETY INFORMATION

Always follow basic safety precautions when installing and operating electrical products to reduce the risk of fire, electric shock, and personal injury.

- **Professional Installation Recommended:** If you are unsure about wiring or installation, consult a qualified electrician.
- **Power Disconnection:** Always disconnect power at the circuit breaker or fuse box before installation, servicing, or changing any part of the fixture.
- **Grounding:** Ensure the fixture is properly grounded to avoid potential electrical shock.
- **Voltage Compatibility:** Verify that the supply voltage is compatible with the fixture's requirements (240 Volts).
- **Outdoor Use:** This fixture is rated IP65 waterproof for outdoor use. Ensure all connections are sealed to maintain water resistance.
- **Avoid Damage:** Do not connect the fixture to a power source while it is in the packaging. Do not damage or alter the wiring during installation.

2. PACKAGE CONTENTS

Carefully unpack your Haylen outdoor wall light and ensure all components are present and undamaged. If any parts are missing or damaged, contact customer support.

- Haylen LED Outdoor Wall Light (1 unit)
- Mounting Hardware (screws, wire nuts)
- Remote Control
- Installation Guide
- Optional Cover Plates (for junction box coverage)

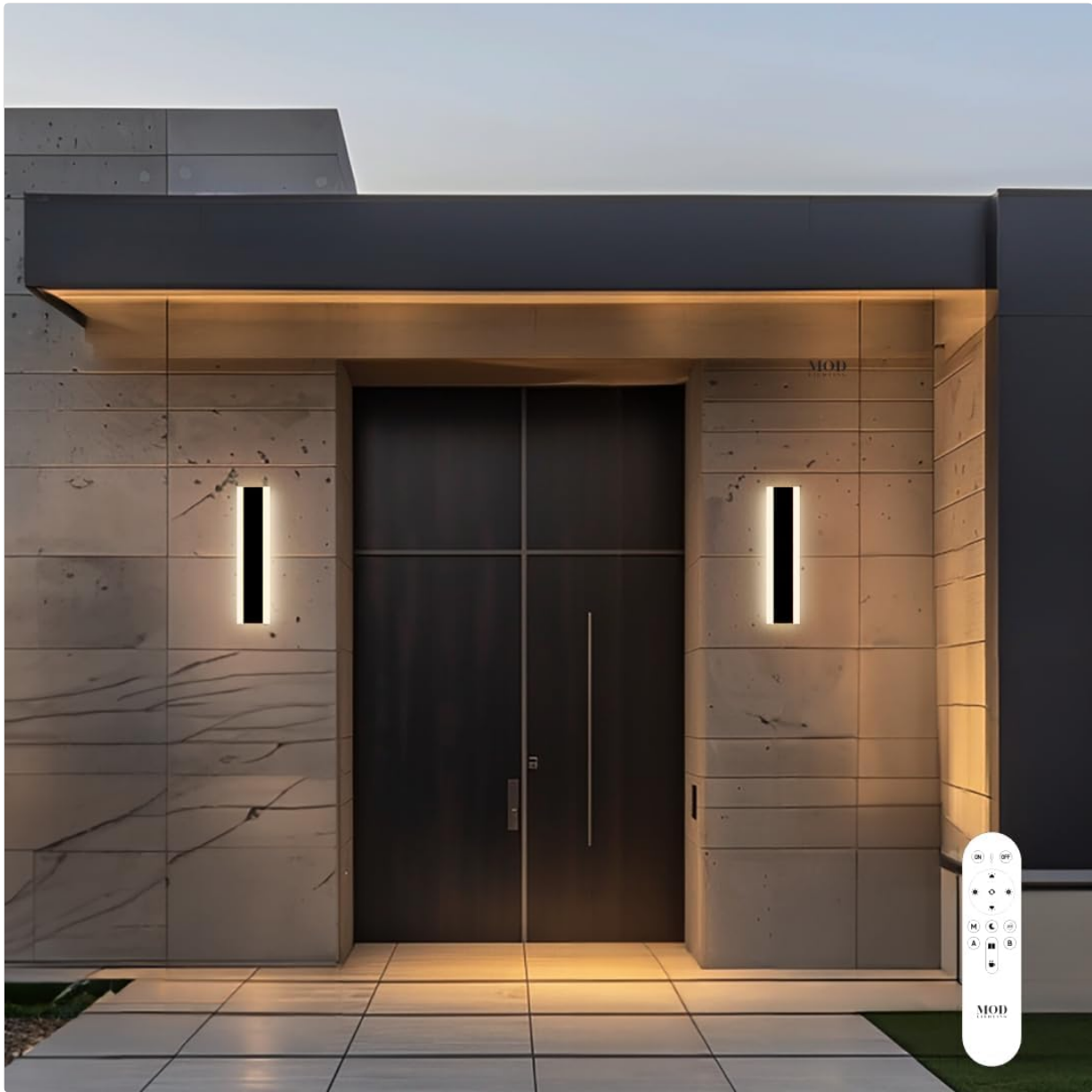


Image: The Haylen 12-inch LED outdoor wall light shown with its remote control, highlighting the sleek black design.

3. SPECIFICATIONS

Brand	MOD LIGHTING
Model Name	Haylen
Model Number	MOD000-BK-12-DM
Dimensions (L x W x H)	3" x 1.8" x 12" (7.6 cm x 4.6 cm x 30.5 cm)
Material	Aluminum
Color	Black
Light Source Type	LED
Wattage	12 watts
Voltage	240 Volts

Brightness	40 lumens
Color Temperature	3000K (Warm White), 4500K (Neutral White), 6000K (Cool White)
Control Method	Remote Control
Water Resistance Level	IP65 Waterproof
Special Features	Anti-Rust, Dimmable, Energy Efficient, Memory Function
Installation Type	Surface Mount, Hardwired

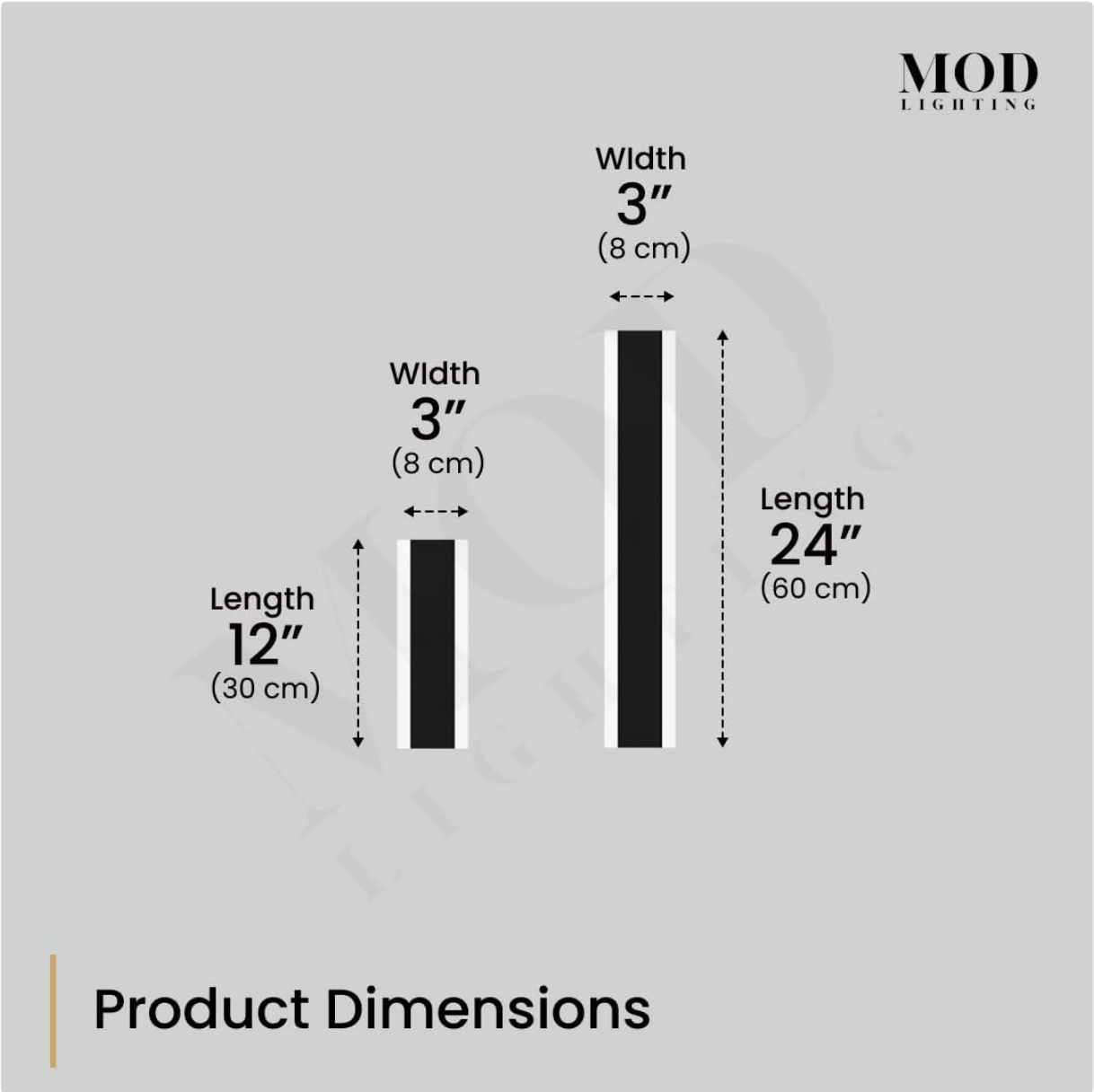


Image: Product dimensions diagram for the Haylen wall light, showing 12-inch and 24-inch lengths with a consistent 3-inch width.

4. SETUP AND INSTALLATION

This section provides general guidance for installing your Haylen outdoor wall light. Refer to the included detailed installation guide for specific steps and diagrams.

4.1 Pre-Installation Checklist

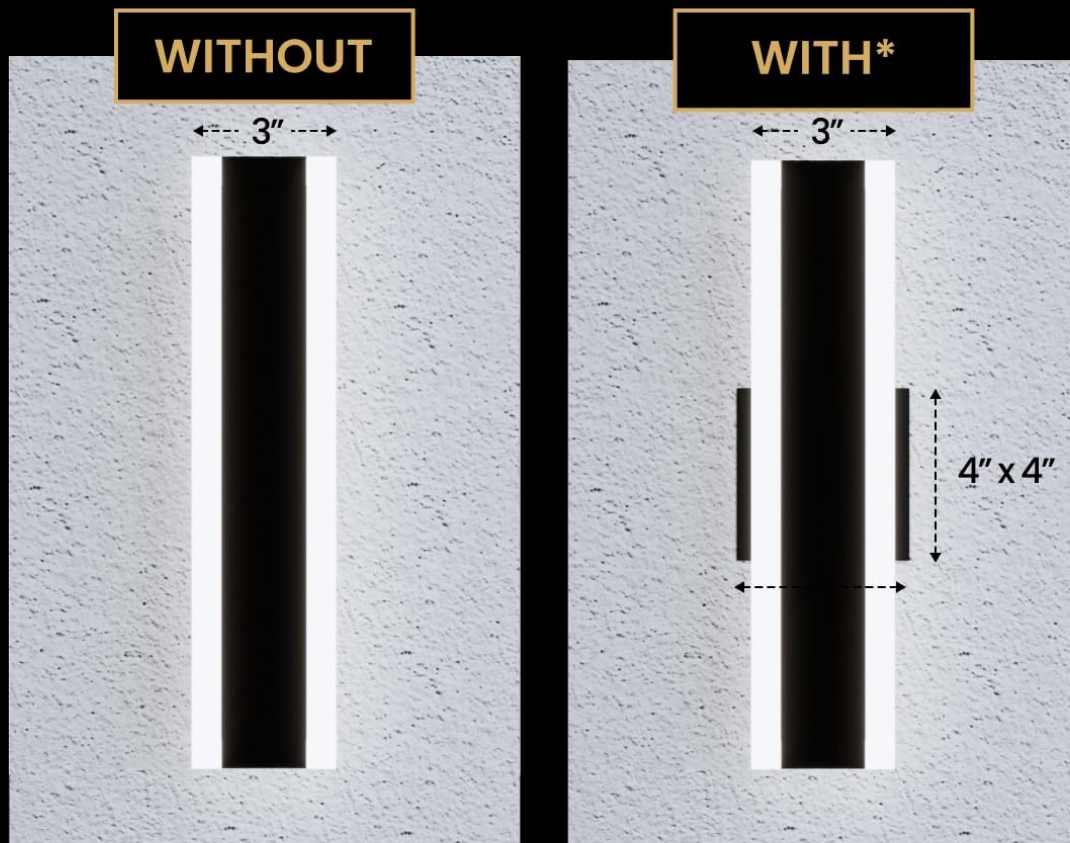
- Ensure power is OFF at the circuit breaker.

- Gather necessary tools (screwdriver, wire strippers, electrical tape, drill).
- Confirm all package contents are present.

4.2 Mounting the Fixture

1. **Prepare the Mounting Surface:** Ensure the wall surface is clean, dry, and structurally sound.
2. **Attach Mounting Bracket:** Secure the mounting bracket to the wall using the provided screws. Ensure it is level.
3. **Wiring Connections:** Connect the fixture's wires to your household wiring (Live, Neutral, Ground) using wire nuts. Ensure a secure and insulated connection for each wire.
4. **Secure the Fixture:** Carefully align the fixture with the mounting bracket and secure it in place with the provided screws.
5. **Optional Cover Plates:** If covering a junction box, attach the complementary cover plates as needed before securing the main fixture.

Flexible Installation: w/ Complementary Cover Plates



*For when you need to cover the junction box

Image: Illustration of flexible installation options, demonstrating how to use complementary cover plates to conceal a junction box, or install without them for a flush look.

4.3 Post-Installation

- Restore power at the circuit breaker.
- Test the light fixture using the remote control.

5. OPERATING INSTRUCTIONS

The Haylen wall light is operated using the included remote control, offering dimming and color temperature adjustments.

5.1 Remote Control Functions

- **Power On/Off:** Press the **ON/OFF** button to turn the light on or off.
- **Brightness Adjustment (Dimming):** Use the **+** and **-** buttons to increase or decrease brightness (0-100%).
- **Color Temperature Selection:**
 - Press **"C"** for Cool White (6000K).
 - Press **"N"** for Neutral White (4500K).
 - Press **"W"** for Warm White (3000K).
- **Memory Function:** The light will remember your last brightness and color temperature settings when turned off and on again.



Image: Visual representation of the Haylen light's dimmable and color temperature adjustable features, showing warm, neutral, and cool white settings with remote control interface.



Image: Three Haylen lights installed on an outdoor wall, demonstrating the ability to switch between three color temperatures and their energy-efficient LED operation.

6. MAINTENANCE

Regular maintenance helps ensure the longevity and optimal performance of your Haylen outdoor wall light.

- **Cleaning:** Periodically wipe the fixture with a soft, damp cloth. Do not use abrasive cleaners or solvents, as these can damage the finish. Ensure power is off before cleaning.
- **Inspection:** Annually inspect the fixture for any signs of wear, damage, or loose connections. Check for water ingress, especially around seals and wiring.
- **LED Longevity:** The integrated LED light source is designed for long life and is not user-replaceable.



Image: Haylen outdoor wall lights on a modern building, illustrating their robust construction and suitability for various weather conditions.

7. TROUBLESHOOTING

If you encounter issues with your Haylen outdoor wall light, refer to the following common problems and solutions.

Problem	Possible Cause	Solution
Light does not turn on.	No power supply; Loose wiring; Faulty remote control.	Check circuit breaker; Verify wiring connections; Replace remote battery or re-pair remote.
Light flickers or dims unexpectedly.	Unstable power supply; Loose wiring; Remote interference.	Consult an electrician; Check wiring; Ensure no obstructions or interference with remote signal.
Remote control not responding.	Dead battery; Remote not paired; Obstruction.	Replace remote battery; Refer to remote pairing instructions (if applicable); Ensure clear line of sight to fixture.
Water inside the fixture.	Improper sealing during installation; Damaged seal.	Immediately disconnect power. Inspect and re-seal all connections. If damage is present, contact customer support.

If the problem persists after attempting these solutions, please contact MOD LIGHTING customer support.

8. WARRANTY AND SUPPORT

MOD LIGHTING is committed to your satisfaction and product safety.

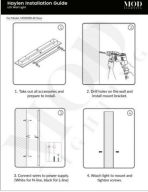
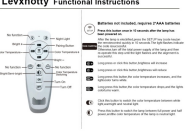
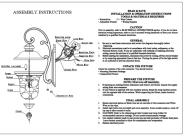
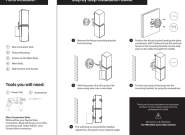

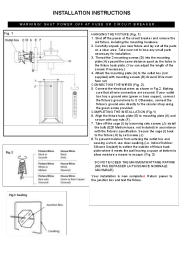
8.1 Product Warranty

The Haylen outdoor wall light comes with a **1-year product warranty** from the date of purchase. This warranty covers defects in materials and workmanship under normal use.
Certifications: UL, CE, IP65.

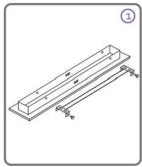
8.2 Customer Support

For any installation questions, troubleshooting assistance, or warranty claims, please contact MOD LIGHTING customer support. We offer **lifetime after-sale support**.
Please visit the [MOD LIGHTING Store on Amazon](#) for more information or to contact us directly.

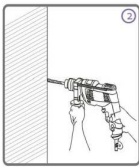
Related Documents - Haylen

	<p>Haylen LED Wall Light Installation Guide - MOD LIGHTING</p> <p>Comprehensive installation guide for the MOD LIGHTING Haylen LED Wall Light (Model MOD000). Follow these step-by-step instructions for safe and proper mounting, wiring, and fixture attachment.</p>
	<p>Levxhotty Functional Instructions - Remote Control Guide</p> <p>Detailed functional instructions for the Levxhotty remote control, explaining how to operate and pair the lighting system. Includes button functions for brightness, color temperature, and power.</p>
	<p>Bloomsbury Market Vintage Outdoor Wall Lantern Assembly & Installation Guide (dheh1016)</p> <p>Step-by-step assembly and installation instructions for the Bloomsbury Market Vintage Outdoor Wall Lantern (model dheh1016). Learn how to safely install this weatherproof exterior sconce light, including tools needed, wiring, and final setup.</p>
	<p>Wrought Studio LED Outdoor Wall Sconce Installation Guide (Model leei1057)</p> <p>Step-by-step instructions for installing the Wrought Studio LED Outdoor Wall Sconce, model leei1057. Includes parts list, tools required, wiring instructions, and safety precautions.</p>
	<p>ASD LED Outdoor Wall Sconce - 14 Inch, 12W, Color Selectable</p> <p>Information on the ASD LED Outdoor Wall Sconce, a 14-inch, 12W fixture with color selectable CCT (3000K/4000K/5000K), 120V input, TRIAC dimming, and a durable, waterproof design suitable for wet locations. Includes product specifications, ordering information, and installation guide.</p>
	<p>Installation Instructions for 17 Stories Outdoor Porch Lights</p> <p>Comprehensive installation guide for 17 Stories outdoor porch lights (model dkah1007), detailing mounting, wiring, and completion steps for safe and proper setup.</p>

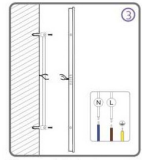
HAYLEN Installation Guide



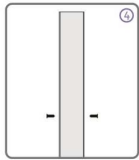
1. Take out all accessories and prepare to install



2. Drill holes on the wall and install mount bracket



3. Connect wires to power supply (Blue for N line, brown for L line)



4. Attach light to mount and tighten screws

[\[pdf\]](#) Installation Guide Guide Accessories

HAYLEN Installation Guide DAEx cIY1Ws BAD0DM7Xz9Q Henry L here Haylen RGB MOD LIGHTING

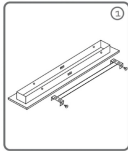
View installation guide 4e87ce64 eac3 4111 8b2c 80ff8e399749 v 1639002545 cdn shopify s files 1 0609 2898 3299 |||

HAYLEN Installation Guide 1. Take out all accessories and prepare to install 2. Drill holes on the wall and install mount bracket 3. Connect wires to power supply Blue for N line, brown for L line 4. Attach light to mount and tighten screws ...

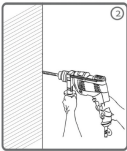
lang: **score:39** filesize: 1.52 M page_count: 1 document date: 2021-12-08

Haylen Installation Guide LED Wall Light

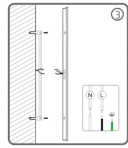
MOD
LIGHTING



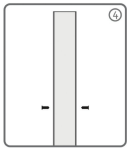
1. Take out all accessories and prepare to install



2. Drill holes on the wall and install mount bracket



3. Connect wires to power supply (White for N-line, black for L-line)



4. Attach light to mount and tighten screws

[\[pdf\]](#) Installation Guide Guide

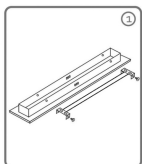
Haylen installation guide here LED Wall Light Sconces MOD LIGHTING Installation Easy Assembly

Required View e5cb84ce 1580 460c b83a b335fdd35e8f v 1681085924 cdn shopify s files 1 0609 2898 3299 |||

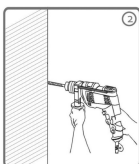
Haylen Installation Guide LED Wall Light If you have any questions or experience any issues with your installation, please contact us via email at info@mod-lighting.com for more help. ...

lang: **score:32** filesize: 1.98 M page_count: 1 document date: 2023-04-09

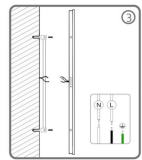
HAYLEN Installation Guide



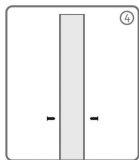
1. Take out all accessories and prepare to install



2. Drill holes on the wall and install mount bracket



3. Connect wires to power supply (White for N-line, black for L-line)



4. Attach light to mount and tighten screws

[\[pdf\]](#) Installation Guide Guide

HAYLEN Installation Guide DAEx cIY1Ws BAD0DM7Xz9Q Henry L here Haylen LED Wall Lights MOD

LIGHTING View installation guide v 1670702969 cdn shopify s files 1 0609 2898 3299 |||

...

lang: **score:30** filesize: 1.33 M page_count: 1 document date: 2022-12-10



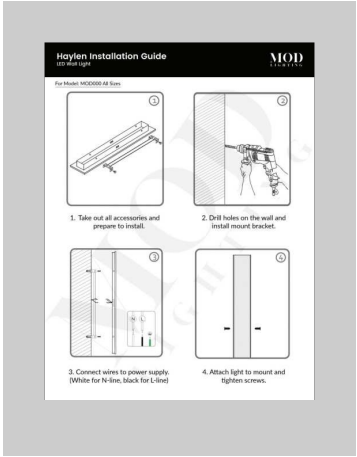
[\[pdf\]](#) Specifications Warranty

Untitled Download Spec SheetHaylen Modern Black Metal Waterproof LED Wall Light MOD LIGHTING
LIGHTINGCompressed Haylen Sheetcdn sanity io files lrx9w99n production

a9c2d66602dcacb5f9ede3876a590199d2be0db8 |||

Haylen WATERPROOF LED WALL LIGHT TYPE STYLE SIZES Wall Light modern 12 TO 94 Inches Transform your outdoor space with **Haylen**, the sleek and modern LED wall light. These exterior sconces are weather-resistant and energy-ecient, while the superb crasmanship and an-corrosion coang ensure durability....

lang:en score:24 filesize: 3.63 M page_count: 9 document date: 2025-07-13



[Haylen LED Wall Light Installation Guide - MOD LIGHTING](#)

Comprehensive installation guide for the MOD LIGHTING Haylen LED Wall Light (Model MOD000). Follow these step-by-step instructions for safe and proper mounting, wiring, and fixture attachment.

lang:en score:20 filesize: 182.09 K page_count: 1 document date: 2024-01-16