

KAMEP Bell J4SN

KAMEP Bell J4SN Wireless Video Doorbell Camera User Manual

Model: Bell J4SN | Brand: KAMEP

1. INTRODUCTION

Thank you for choosing the KAMEP Bell J4SN Wireless Video Doorbell Camera. This manual provides detailed instructions to help you set up, operate, and maintain your new doorbell camera, ensuring optimal performance and enhanced home security. The KAMEP Bell J4SN offers 1080P HD video, IR night vision, two-way audio with voice changer, smart motion detection, and flexible storage options, all designed for ease of use and reliable protection.



Figure 1: KAMEP Bell J4SN Wireless Video Doorbell Camera and Chime

2. WHAT'S IN THE BOX

Please verify that all components are present in your package:

- 1 x Wireless Video Doorbell (Model: Bell J4SN)
- 1 x Wireless Indoor Chime (Model: Chime 09)
- 1 x User Guide
- 1 x USB Cable
- 1 x Screw Kit (includes screws and wall anchors)

Wire-Free to Install

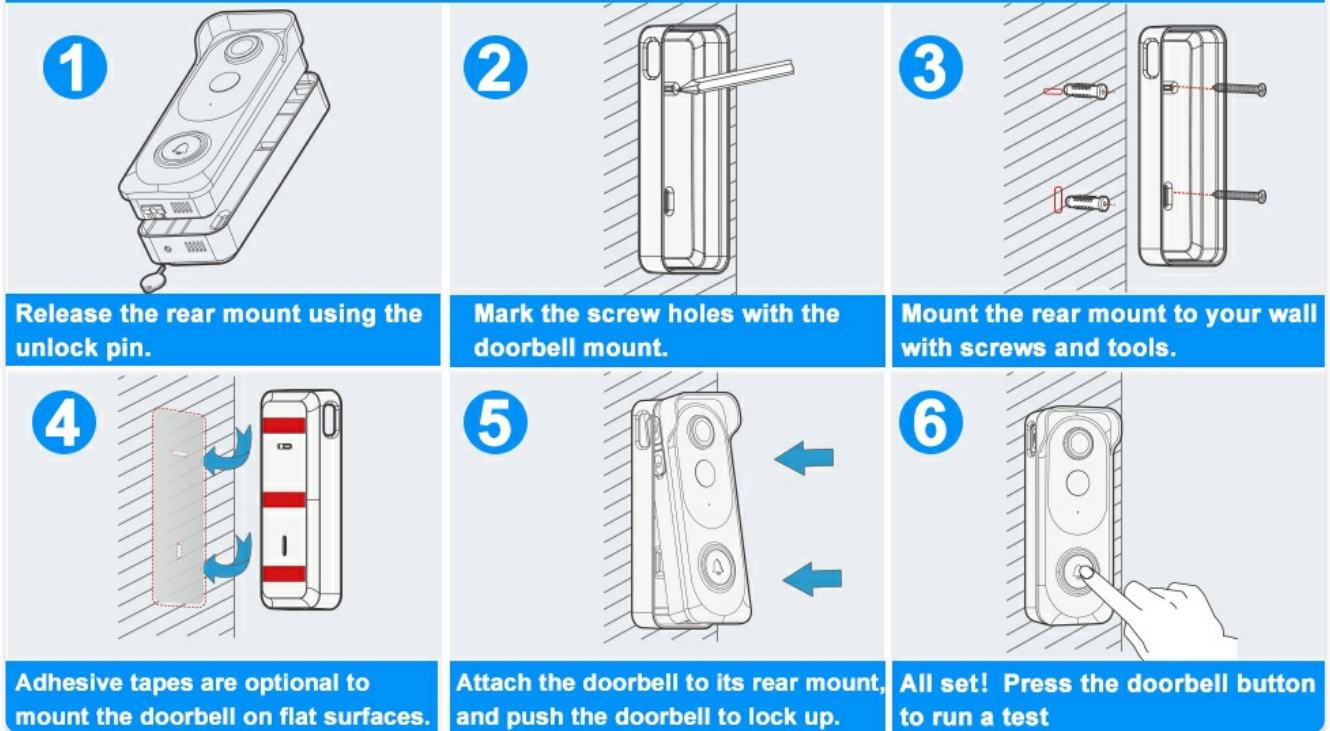


Figure 2: Included components of the KAMEP Video Doorbell package.

3. SETUP AND INSTALLATION

3.1. Initial Setup and Rear Cover Removal

Before installation, familiarize yourself with the doorbell unit. The rear cover needs to be removed to access the battery compartment and SD card slot.

Your browser does not support the video tag.

Video 1: Demonstrates how to remove the rear cover of the doorbell using the provided pin.

3.2. SD Card Installation and Charging

The doorbell supports local storage via an SD card (up to 128GB, not included). Insert the SD card into the designated slot. Ensure the doorbell is fully charged using the provided USB cable before first use. A full charge can provide up to 90 days of standby time, depending on usage and settings.

Two Storage Methods



24/7 Recording



**Cloud Storage
(With 7-day free trial)**



**Max 128GB TF Card
(Not Included)**



Figure 3: Storage options for the doorbell camera, including Micro SD card slot.

Wireless Setup



Work with
2.4GHz WiFi



Standby for
90 days 1 charge



※ Battery life may vary depending on usage, placement and settings

Figure 4: Wireless setup and battery life information.

3.3. Mounting the Doorbell

The doorbell can be mounted using screws or strong 3M double-sided adhesive (included). Choose a suitable location near your door with good Wi-Fi coverage. For screw installation, mark the drill points using the mounting base, drill holes, insert wall anchors, and secure the base. Then, attach the doorbell to the mounted base.

Your browser does not support the video tag.

Video 2: Step-by-step guide on how to install the doorbell camera.

Wireless Video Doorbell Camera with Chime



Figure 5: Visual guide for wire-free installation.

3.4. Pairing the Chime

The indoor chime needs to be paired with the doorbell for audible alerts inside your home. Follow the instructions in the video to successfully pair the chime unit.

Your browser does not support the video tag.

Video 3: Instructions on how to pair the indoor chime with the doorbell.

3.5. App Download and Connection

Download the Cloudot or Clouledge app from your smartphone's app store. Follow the in-app instructions to connect your doorbell camera to your 2.4Ghz Wi-Fi network. This app allows you to view live feeds, receive alerts, and manage settings.

3.6. Alexa and Google Assistant Integration

The KAMEP doorbell camera is compatible with Amazon Alexa and Google Assistant, allowing you to view your doorbell feed on compatible smart displays. Follow the steps in the video to link your Cloudot/Clouledge account with your Alexa app.

Your browser does not support the video tag.

Video 4: Guide on connecting your doorbell camera to Alexa for voice control and live view.

Works with Alexa and Google Assistant



"Alexa, show me my front door."



Figure 6: Compatibility with smart home assistants.

4. OPERATING YOUR DOORBELL CAMERA

4.1. Live View and Two-Way Audio

Access the live feed through the app to see what's happening at your door in real-time. Use the two-way audio feature to communicate with visitors from anywhere.

Two-way Audio & Voice Changer



Figure 7: Two-way audio and voice changer capabilities.

4.2. Voice Changer and Voice Message

Enhance your privacy with the voice changer function, which can alter your voice during two-way communication. You can also pre-record voice messages to play for visitors when you are unable to answer.

4.3. Smart Motion Detection and Alerts

The doorbell features PIR motion and human detection. When activity is detected, you will receive instant alerts on your smartphone. Sensitivity and motion zones can be customized in the app to reduce false alarms.

Smart Human Detection & Instant Alerts



Figure 8: Smart motion detection features.

4.4. Night Vision

The doorbell camera provides clear 1080P HD video quality even in low-light conditions, with superb IR night vision up to 33 feet.

1080P HD Video & IR Night Vision



Figure 9: Day and IR Night Vision capabilities.

4.5. Multi-Device Sharing

You can share access to your doorbell camera with family members or trusted individuals through the app, allowing multiple users to receive alerts and view the live feed.

Your browser does not support the video tag.

Video 5: Explains how to share your doorbell access with other users.

5. MAINTENANCE

5.1. Battery Life and Charging

The doorbell is powered by two Lithium Ion batteries (included). Monitor the battery level through the app and recharge as needed using the provided USB cable. Battery life may vary based on usage, placement, and settings.

5.2. Cleaning

To ensure clear video quality, regularly clean the camera lens with a soft, dry cloth. Avoid using harsh chemicals or abrasive materials.

5.3. Weather Resistance

The KAMEP Bell J4SN is IP66 waterproof and dustproof, designed to withstand various weather conditions. However, extreme temperatures or prolonged direct exposure to heavy rain/snow may affect performance over time.



Figure 10: IP66 Weather Resistance features.

6. TROUBLESHOOTING

- **No Power/Not Turning On:** Ensure the battery is fully charged. Press and hold the power button for 1 second to turn on, or 5 seconds to turn off.
- **Cannot Connect to Wi-Fi:** Verify your Wi-Fi network is 2.4Ghz. Ensure the doorbell is within range of your router.

Restart your router and the doorbell.

- **Frequent False Alarms:** Adjust the motion detection sensitivity and customize motion zones in the app to exclude high-traffic areas or swaying objects.
- **Poor Video Quality:** Check your Wi-Fi signal strength. Ensure the camera lens is clean and free from obstructions.
- **Chime Not Ringing:** Ensure the chime unit is paired correctly with the doorbell (refer to Section 3.4). Check the chime's battery level.
- **No Two-Way Audio:** Check microphone and speaker settings in the app. Ensure your phone's volume is up.

7. SPECIFICATIONS

Feature	Detail
Model Name	Bell J4SN
Power Source	Battery Powered (2 Lithium Ion batteries included)
Connectivity	2.4Ghz Wi-Fi
Video Resolution	1080p HD
Field of View	145° Wide Angle
Night Vision Range	Up to 33 feet
Motion Detection	PIR Motion and Human Detection
Storage Options	Cloud Storage (7-day free trial) & Local Storage (up to 128GB SD card, not included)
Weather Resistance	IP66 Waterproof
Dimensions (L x W x H)	5.79 x 2.2 x 1.5 inches
Weight	0.23 Kilograms (8.1 ounces)
Compatible Devices	Smartphone, Tablet (Alexa, Google Assistant)

8. WARRANTY AND SUPPORT

KAMEP is committed to providing high-quality products and excellent customer service. For any technical assistance, warranty claims, or product inquiries, please refer to the contact information provided in your product packaging or visit the official KAMEP website. We offer lifetime technical support, 24-hour service support, and 30-day return support.