



[Manuals.plus](#) /

› [LYNCOHOME](#) /

› LYNCOHOME 9-Drawer Fabric Dresser (Model LH7515) Instruction Manual

LYNCOHOME LH7515

LYNCOHOME 9-Drawer Fabric Dresser (Model LH7515) Instruction Manual

Brand: LYNCOHOME | Model: LH7515

INTRODUCTION

This manual provides detailed instructions for the assembly, operation, and maintenance of your LYNCOHOME 9-Drawer Fabric Dresser, Model LH7515. Designed for versatile storage, this dresser features a sturdy metal frame and nine fabric drawers, offering an efficient solution for organizing various items in your home.



Image: The LYNCOHOME 9-Drawer Fabric Dresser in vintage brown, showcasing its design and storage capacity.

SETUP AND ASSEMBLY

The LYNCOHOME 9-Drawer Fabric Dresser is designed for easy and quick assembly. All necessary instructions and clearly marked accessory models are included with your product. No additional tools or sharp accessories like nails are required, ensuring a safe assembly process. Even without prior DIY experience, assembly can typically be completed within thirty minutes.

Assembly Steps Overview:

1. **Unpack Components:** Carefully remove all parts from the packaging and verify against the included parts list.
2. **Assemble Frame:** Follow the provided diagrams to connect the metal frame components. Ensure all connections are secure.
3. **Install Drawers:** Insert the fabric drawers into their designated slots within the assembled frame.
4. **Final Checks:** Confirm all parts are correctly installed and the dresser is stable.

Schrank mit 9 Schubladen

Schublade mit großem Fassungsvermögen



Image: Diagram illustrating the overall dimensions of the dresser: 100 cm (width) x 29.8 cm (depth) x 100 cm (height).

OPERATING INSTRUCTIONS

This dresser is designed for straightforward use. The nine fabric drawers provide ample storage space for various items such as clothing, toys, tools, books, and miscellaneous household goods. Each drawer is equipped with a stable handle for easy opening and closing.

- **Drawer Capacity:** The total load capacity of the dresser is 20-30 kg. Large drawers can hold 6-8 kg, while small drawers can hold 3-4 kg. Avoid exceeding these weight limits to ensure product longevity.
- **Smooth Operation:** Gently pull and push drawers to prevent wear and tear on the fabric and frame.

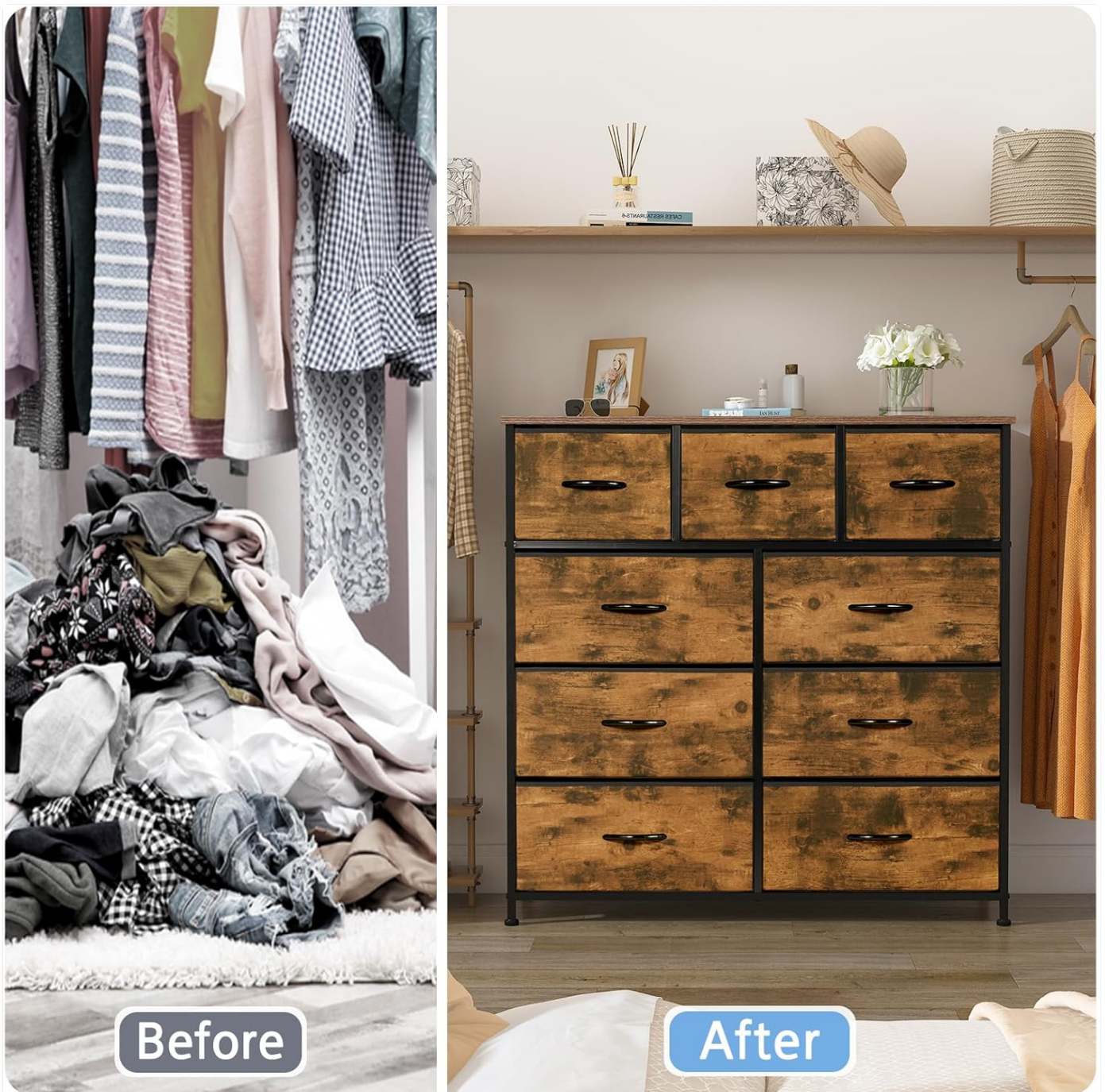


Image: A visual comparison showing a cluttered space before and an organized space after using the LYNCOHOME dresser, highlighting its effectiveness in tidying up.

CARE AND MAINTENANCE

Proper care will extend the life of your LYNCOHOME dresser. The fabric used in the drawers is dried after production and allowed to air for an extended period to effectively reduce chemical odors, making it safe for use in bedrooms and children's rooms.

- **Cleaning Fabric Drawers:** Do not wash the fabric drawers. Instead, wipe them directly with a damp cloth to clean. Avoid harsh chemicals or abrasive cleaners.
- **Frame Cleaning:** Wipe the metal frame and wooden top with a soft, dry or slightly damp cloth.
- **Odor Reduction:** If any residual odor is present upon unpacking, allow the dresser to air out in a well-ventilated area for a few days.
- **Damage Prevention:** The packaging includes shock-absorbing material to prevent damage during transport. Retain packaging if possible for future moves.

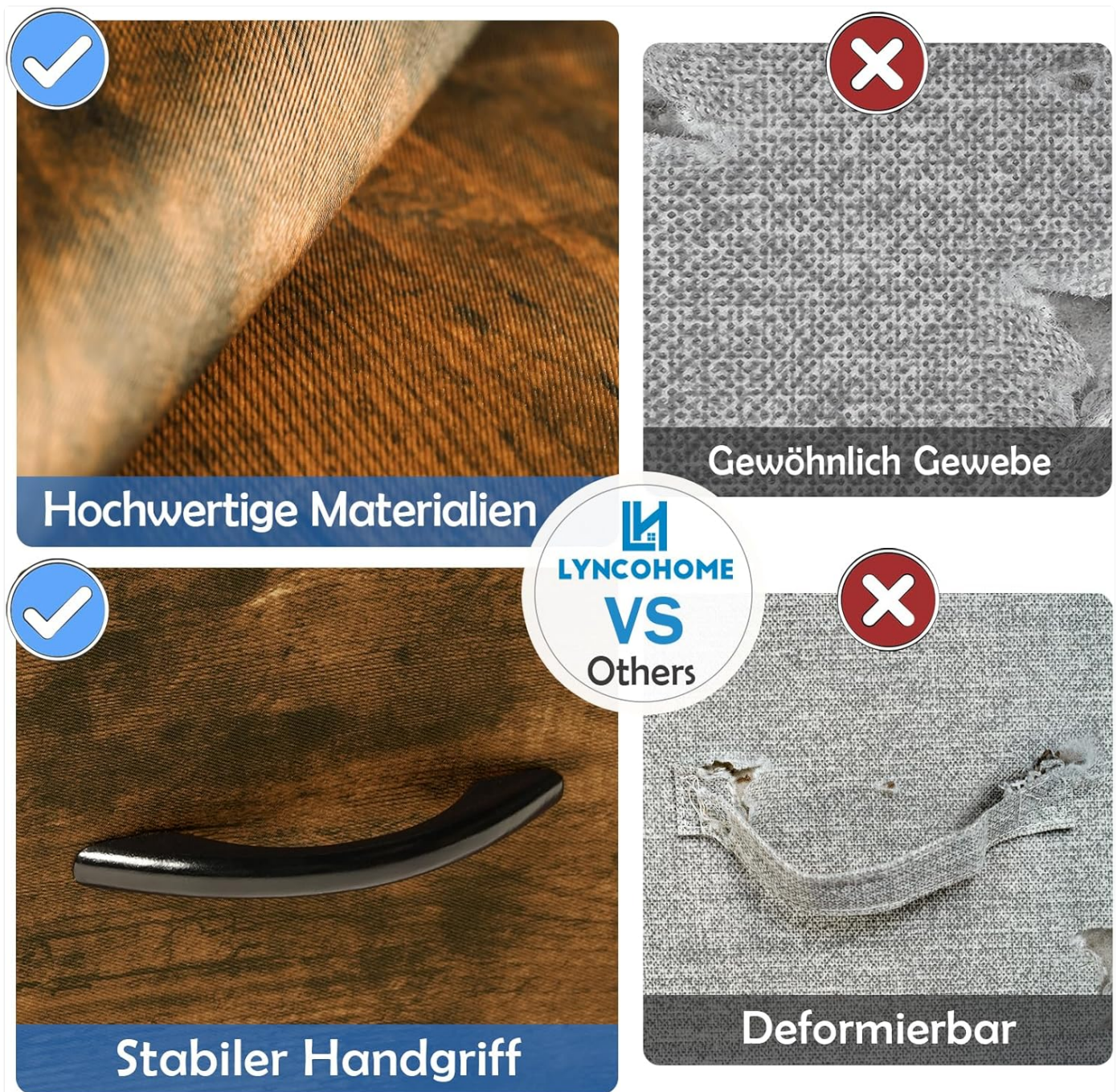


Image: A comparison highlighting the high-quality fabric and stable handles of the LYNCOHOME dresser against ordinary, deformable fabric and handles from other products.

TROUBLESHOOTING

Should you encounter any issues with your dresser, please refer to the following common solutions:

- **Wobbly Frame:** Ensure all screws and connectors are tightened securely. Re-check assembly steps if necessary.
- **Drawers Not Fitting:** Verify that the frame is assembled correctly and that drawers are inserted into the correct slots. Ensure no fabric is caught.
- **Unusual Odor:** As mentioned in maintenance, allow the dresser to air out in a well-ventilated space.

If problems persist, please contact LYNCOHOME customer support for further assistance.

PRODUCT SPECIFICATIONS

Feature	Detail
Brand	LYNCOHOME
Model Number	LH7515
Dimensions (L x W x H)	29.8 x 100 x 98 cm (11.7 x 39.4 x 38.6 inches)
Item Weight	13.7 Kilograms (30.2 lbs)
Material	Stainless Steel (Frame), Fabric (Drawers)
Finish Type	Lacquered
Number of Drawers	9
Color	Vintage Brown
Style	Vintage
Assembly Required	Yes
Special Features	Durable
Components Included	Metal frame, screws, wooden top board, fabric drawers
Total Load Capacity	20-30 kg (44-66 lbs)
Large Drawer Capacity	6-8 kg (13-17.6 lbs)
Small Drawer Capacity	3-4 kg (6.6-8.8 lbs)

WARRANTY AND SUPPORT

Specific warranty details for the LYNCOHOME 9-Drawer Fabric Dresser (Model LH7515) are typically provided with your purchase documentation. Please refer to the information included in your product packaging or contact your retailer for warranty terms and conditions.

For technical support, missing parts, or any questions regarding your product, please contact LYNCOHOME customer service through the contact information provided by your seller or on the official LYNCOHOME website.