



Manuals.plus /

› iZEEKER /

› iZEEKER Solar Trail Camera 36MP 2.7K 30fps with Night Vision 5200 mAh Rechargeable Lithium Battery No Glow Infrared LEDs, Game Camera with Motion Activated IP66 Waterproof for Outdoor Monitoring Camouflaged

iZEEKER iG220

iZEEKER Solar Trail Camera User Manual

Model: iG220

Brand: iZEEKER

PRODUCT OVERVIEW

The iZEEKER Solar Trail Camera iG220 is designed for outdoor monitoring, offering high-resolution imaging and advanced features for capturing wildlife or for security purposes. Its innovative solar-powered technology and robust waterproof design ensure reliable performance in various environments.

Key features include:

- **Innovative Solar Powered Technology & Dual Power Supply:** Built-in 5200mAh rechargeable lithium battery, supplemented by a top-mounted solar panel. Supports 4 backup AA batteries (not included) for extended longevity.
- **Ultra-high 1520P 30fps 36MP Resolution & Advanced No Glow Night Vision:** Captures excellent images and clear audible videos with rich details. No-glow infrared LEDs ensure silent operation without disturbing animals.
- **Strong Waterproof Performance & Sturdy Integrated Structure:** IP66 waterproof rating for reliable operation in harsh weather. Front-facing LCD screen and lens for easy adjustment and even selfies.
- **Excellent Detecting Sensitivity & Continuous Loop Recording:** Features 0.1s fast trigger speed, 3 continuous shots, and adjustable motion-activated sensor with a max detection distance of 65ft. Supports loop recording to overwrite old files when the SD card is full.
- **Easy Setup & Multiple Features:** Glow menu button for easy dark setup. Supports up to 128GB SD card (not included). Customizable settings include photo number, time interval, timer, time lapse, PIR sensitivity, IR distance, and password protection.

WHAT'S IN THE BOX

- 1 x iG220 Trail Camera
- 1 x USB Cable
- 1 x User Manual
- 1 x Strap

All-Weather Protection



IP66

Image: The iZEEKER Solar Trail Camera, USB cable, user manual, and mounting strap are neatly displayed, showing all included components.

SETUP INSTRUCTIONS

- 1. Initial Battery Charge:** Before first use, fully charge the built-in 5200mAh lithium battery using the provided USB cable. Connect the USB cable to the camera and a compatible power source (e.g., computer USB port, USB wall adapter).
- 2. Install Backup Batteries (Optional):** For extended operation, insert 4 AA batteries (not included) into the designated battery compartment. These will serve as a backup power source if the built-in lithium battery depletes.
- 3. Insert SD Card:** Open the camera housing and locate the SD card slot. Insert a compatible SD card (up to 128GB, not included) into the slot. Ensure it is properly seated.

4. **Power On:** Use the power switch to turn on the camera. The LCD screen will illuminate, and you can begin configuring settings.
5. **Configure Settings:** Navigate the menu using the glow buttons. Set desired photo/video resolution (e.g., 36MP photos, 1520P video), trigger speed, time interval, and other preferences.
6. **Mounting:** Use the included strap to securely mount the camera to a tree or pole. The integrated structure allows for easy lens angle adjustment. Ensure the solar panel is positioned to receive maximum sunlight.



Image: The iZEEKER Solar Trail Camera is depicted with its side panel open, revealing the internal LCD screen and user interface buttons, indicating ease of access for setup.

The iG220 camera is designed for intuitive operation. Once set up, it will automatically capture images or videos based on motion detection and your configured settings.

Motion Detection & Recording

The camera utilizes a highly sensitive motion-activated sensor. When motion is detected within its 65ft range, it will trigger recording based on your selected mode (photo, video, or both).

- **Trigger Speed:** With a rapid 0.1s trigger speed, the camera minimizes delays in capturing events.
- **Continuous Shots:** In photo mode, it can capture up to 3 continuous shots per trigger event.
- **Loop Recording:** If enabled, the camera will continue recording even when the SD card is full by overwriting the oldest files.

Night Vision

The camera features advanced No Glow Infrared LEDs for discreet night vision. These LEDs emit no visible light, ensuring animals are not disturbed during nighttime recording.

See Wildlife Day&Night

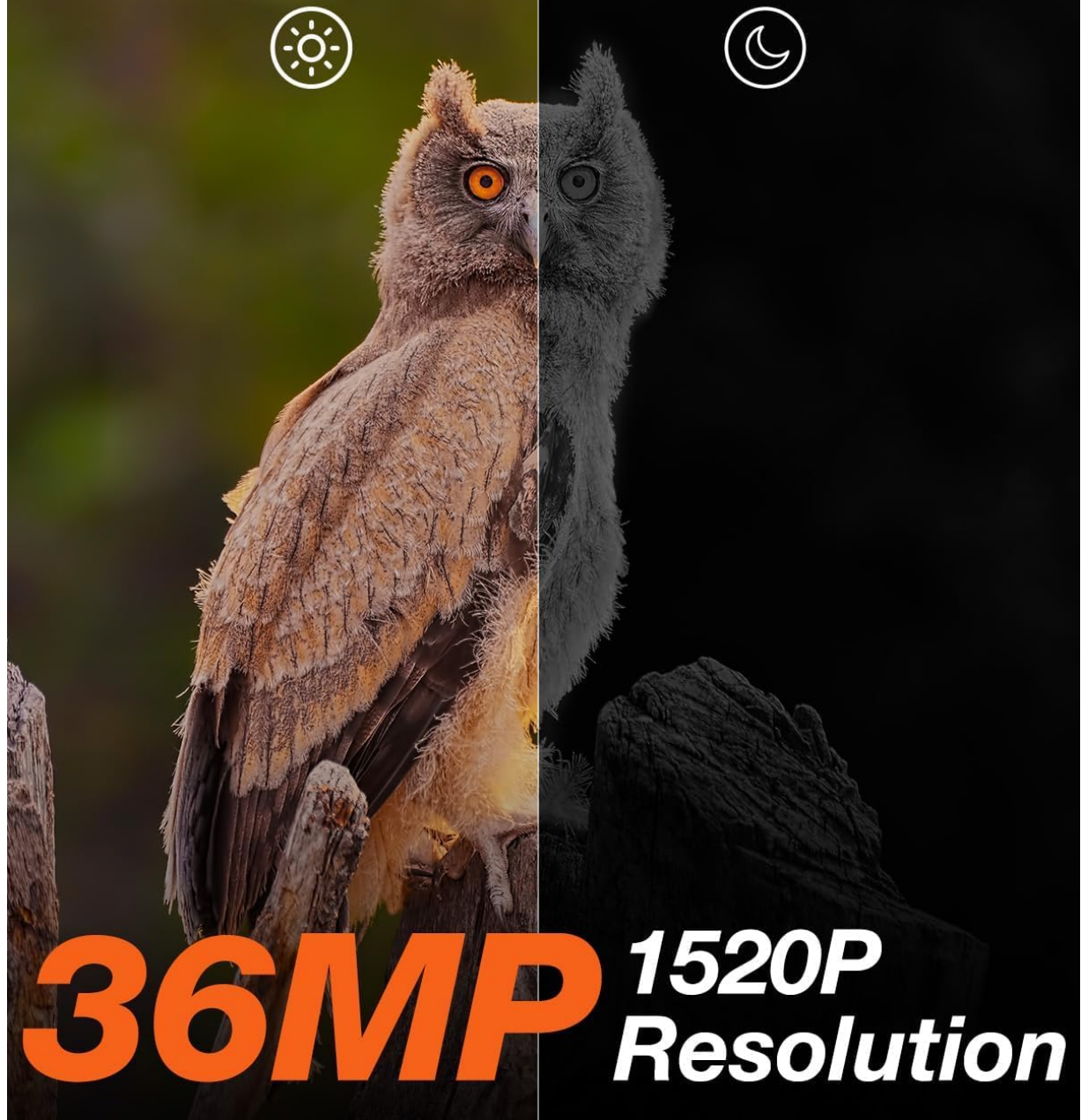


Image: The iZEEKER Solar Trail Camera is depicted with a subtle glow from its 940nm No Glow LEDs, emphasizing its stealth capabilities for night vision without visible light.

Video Playback & Management

You can review captured footage directly on the camera's LCD screen or by transferring files to a computer. The video format is AVI. For Mac users, it is recommended to download Potplayer or KM Player as Apple QuickTime Player does not support AVI files.

Your browser does not support the video tag.

Video: A demonstration of the iZEEKER Solar Trail Camera capturing wildlife footage during both day and night, showcasing its image clarity and night vision capabilities.

MAINTENANCE

- **Battery Management:** The solar panel continuously charges the built-in lithium battery. Periodically check battery levels via the LCD screen. If using backup AA batteries, replace them as needed.
- **Cleaning:** Regularly clean the lens and solar panel with a soft, dry cloth to ensure optimal performance. Avoid abrasive materials.
- **Storage:** When not in use for extended periods, store the camera in a cool, dry place. Ensure the battery is partially charged before storage.

TROUBLESHOOTING

- **Camera Not Recording:**
 - Check if the SD card is inserted correctly and has sufficient space.
 - Ensure batteries are charged.
 - Verify motion detection settings (PIR sensitivity).
- **Poor Image/Video Quality:**
 - Clean the camera lens.
 - Check resolution settings (ensure 36MP/1520P is selected).
 - Ensure adequate lighting for daytime shots or proper IR function at night.
- **Video Playback Issues on Mac:**
 - Download and use Potplayer or KM Player for AVI files.

SPECIFICATIONS

Feature	Value
Indoor/Outdoor Usage	Outdoor
Power Source	Solar Powered, Battery Powered
Video Capture Resolution	1520P, 1080P, 720P, 480P
Effective Still Resolution	36 MP
Night Vision Range	20 Meters
Trigger Speed	0.1s
Battery Capacity	5200 mAh (Built-in Lithium)
Waterproof Rating	IP66
Display	2.0" LCD Screen
Dimensions (L x W x H)	5.63 x 4.21 x 3.74 inches
Item Weight	1.47 pounds

WARRANTY & SUPPORT

iZEEKER products come with a 2-year warranty from the date of purchase. If you encounter any issues with your product during this period, please don't hesitate to reach out to us for assistance. We're here to help!

For further support, you can refer to the [User Manual \(PDF\)](#) or visit the official iZEEKER website: www.izeeker.co.

After Sales Service Email: support.gc@izeeker.co

WhatsApp: **+86 157 5765 6280**