

## Manuals+

[Q & A](#) | [Deep Search](#) | [Upload](#)

Manuals.plus /

› [Lite Brite](#) /

› Lite Brite Super Bright HD Pokemon Edition Instruction Manual

## Lite Brite 02392

# Lite Brite Super Bright HD Pokemon Edition Instruction Manual

Model: 02392

## INTRODUCTION

---

The Lite Brite Super Bright HD Pokemon Edition offers a creative and engaging experience for users aged 6 and up. This updated version features a high-definition light grid with double the LEDs for brighter and more detailed designs. Users can create vibrant images using colorful mini-pegs and included Pokemon-themed templates.

## WHAT'S IN THE BOX

---

- 1 Super Bright HD Unit
- 1,000 Mini-Pegs (various colors)
- 6 Pokemon Themed HD Templates
- 1 Art Guide
- 1 Peg Tool



*Image: The Lite Brite Super Bright HD unit displaying a Pikachu design, with a pile of colorful mini-pegs next to it. This image shows the main unit and the pegs included in the box.*

## SETUP

1. **Battery Installation:** The Lite Brite unit requires 3 AA batteries (not included). Locate the battery compartment on the back of the unit. Use a screwdriver to open the compartment, insert the batteries according to the polarity indicators, and secure the cover.
2. **Powering On:** Locate the power button on the back of the unit. Press it to turn on the Lite Brite.
3. **Template Usage:** Select one of the 6 included Pokemon-themed HD templates. Place the chosen template under the snap-on grid. The grid is designed to hold the template securely and allow the pegs to be inserted through it.
4. **Inserting Pegs:** Use the provided peg tool or your fingers to insert the colorful mini-pegs into the holes on the grid, following the design of the template.



Image: A child's hands are shown placing a black template sheet underneath the clear, perforated grid of the Lite Brite unit. This demonstrates how to position a design template before inserting pegs.



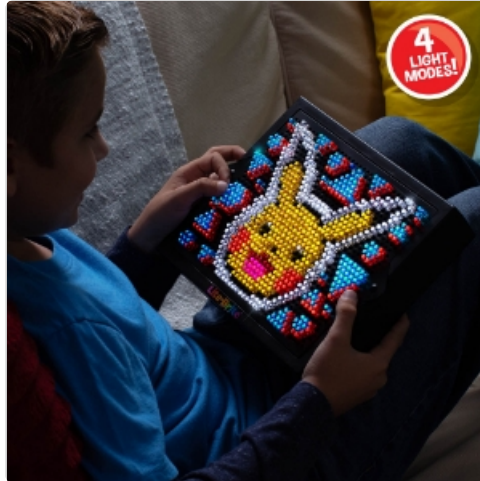
Image: A close-up view of the Lite Brite unit's snap-on grid, highlighting how it secures the template underneath. The text "SNAP-ON GRID" is visible, emphasizing this feature.

## OPERATING INSTRUCTIONS

Once pegs are inserted and the unit is powered on, you can cycle through different light modes to enhance your creation:

- **Steady Light:** All lights remain continuously lit.
- **Bounce:** Lights illuminate in a dynamic, bouncing pattern.
- **Flash:** Lights flash on and off.
- **Clockwise:** Lights illuminate in a rotating clockwise pattern.

To switch between light modes, press the power button repeatedly. To keep the light on continuously in the steady light mode, hold the Power Button for 5 seconds.



*Image: An illustration showing four distinct light modes: steady, bounce, flash, and clockwise, demonstrating the visual effects of each setting on a Lite Brite design.*

Your browser does not support the video tag.

*Video: A product overview video demonstrating the Lite Brite Super Bright HD unit in action, showcasing its features and various light modes. This video is provided by Amazon Product Imaging.*

## MAINTENANCE

- **Cleaning:** Wipe the Lite Brite unit and pegs with a soft, dry cloth. Do not use abrasive cleaners or immerse the unit in water.
- **Storage:** Store the unit and pegs in a cool, dry place away from direct sunlight. Keep pegs in a secure container to prevent loss.
- **Battery Care:** Remove batteries if the unit will not be used for an extended period to prevent leakage.

## TROUBLESHOOTING

Problem	Solution
Unit does not turn on.	Check if batteries are inserted correctly and are not depleted. Replace with new AA batteries if necessary. Ensure the power button is fully pressed.
Lights are dim.	Replace old batteries with fresh AA batteries.
Pegs do not fit or fall out easily.	Ensure you are using the correct mini-pegs designed for this Lite Brite model. Check for any debris in the holes.

## SPECIFICATIONS

- **Model Number:** 02392
- **Brand:** Lite Brite
- **Sub Brand:** Super Bright HD
- **Age Range:** 6+ years old

- **Power Source:** 3 AA Batteries (not included)
- **Material Type:** Plastic
- **Item Dimensions:** 2 x 10.25 x 8 inches
- **Item Weight:** 0.35 Grams
- **Included Components:** 1 Super Bright HD Unit, 1,000 Mini-Pegs, 6 Pokemon Themed HD Templates, 1 Art Guide, 1 Peg Tool

## WARRANTY AND SUPPORT

---

Manufacturer's warranty information can be requested directly from customer service. For further assistance or inquiries, please refer to the contact information provided in the product packaging or visit the official Lite Brite website.

**Warning:** Choking Hazard - Small Parts. Not for Children Under 3 years.