

ONNAIS W007

ONNAIS RV Keyless Entry Door Lock (Model W007) Instruction Manual

Brand: ONNAIS | Model: W007

INTRODUCTION

This manual provides comprehensive instructions for the installation, operation, and maintenance of your ONNAIS Full Metal RV Keyless Entry Door Lock, Model W007. Please read this manual thoroughly before installation and use to ensure proper function and safety.

SAFETY INFORMATION

- Ensure all components are securely installed before use.
- Do not use a pressure washer directly on the RV door lock.
- Keep backup mechanical keys in a safe, accessible location outside the RV.
- Regularly check battery levels to prevent unexpected lockouts.

PACKAGE CONTENTS

The ONNAIS RV Keyless Entry Door Lock package includes the following items:

- RV Door Lock Body (Exterior Unit with Keypad)
- Interior Latch Unit
- Two (2) Remote Fobs
- Two (2) Mechanical Keys
- Strike Plate
- Installation Tools and Screws
- Battery Removal Tool

- User Manual
- Batteries (2 Lithium Metal batteries, included)

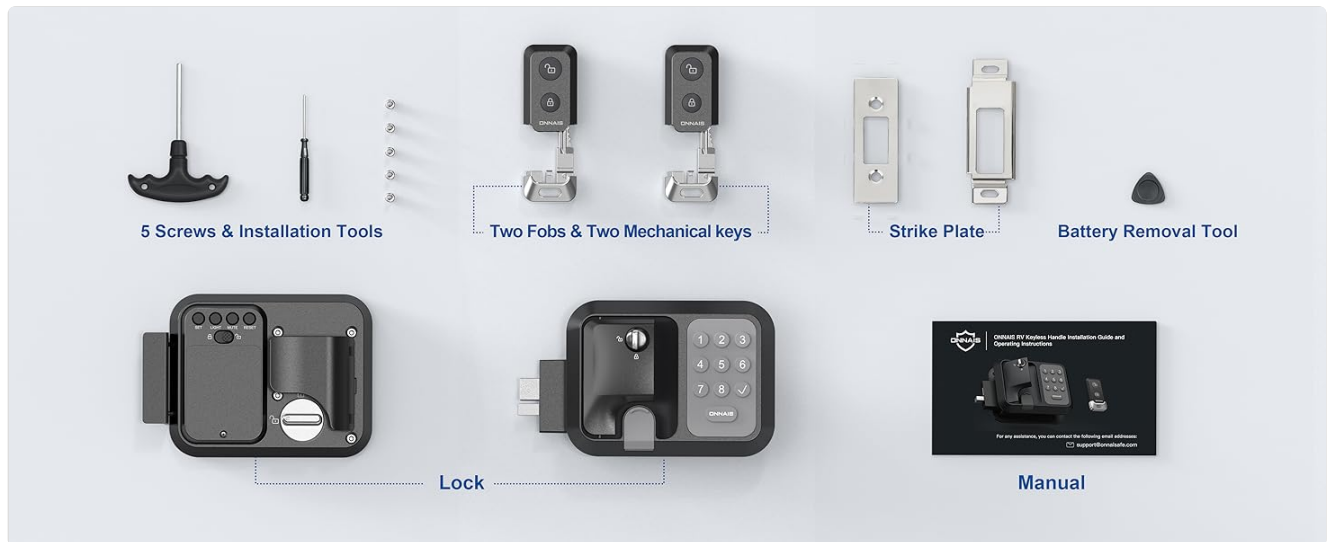


Image: All components included in the ONNAIS RV Door Lock package.

COMPATIBILITY

The ONNAIS RV Keyless Entry Door Lock is designed to fit standard RV door openings measuring 3.75" x 2.75" x 1.5". The exterior unit measures 6.3" x 4.7". It is compatible with most RV doors that have right-side hinges. This lock is not suitable for glass doors.

Check Compatibility Before You Buy



Will Replace These Handles



Will NOT Replace These Handles



Image: Visual guide for RV door lock compatibility, including dimensions and examples of handles that can and cannot be replaced.

SETUP AND INSTALLATION

The installation process typically takes around 5 minutes. An all-in-one installation kit is provided, including all necessary screws, a screwdriver, and tools for future battery changes.

1. **Remove Existing Lock:** Carefully remove your current RV door lock.
2. **Insert New Lock:** Position the exterior unit of the ONNAIS lock into the door opening. Ensure the deadbolt mechanism aligns correctly.
3. **Connect Wiring:** Route the wiring from the exterior unit through the door to connect with the interior latch unit.
4. **Secure Interior Unit:** Attach the interior latch unit, ensuring the wiring is not pinched. Secure both units with the provided screws.
5. **Install Strike Plate:** If necessary, replace the existing strike plate with the new one provided for optimal alignment.

6. **Insert Batteries:** Open the battery compartment on the interior unit and insert the 2 Lithium Metal AA batteries (included).



Image: Installation of the interior unit of the ONNAIS RV door lock, highlighting the battery compartment and control buttons.

Your browser does not support the video tag.

Video: Demonstration of how to pair two remote fobs with the ONNAIS RV Keyless Entry Door Lock. This process involves entering a password on the keypad, pressing the SET button on the interior unit, and then pressing a button on each fob.

OPERATING INSTRUCTIONS

1. Keypad Entry

- **Unlocking:** Enter your programmed password on the keypad, then press the checkmark (✓) button. The deadbolt will retract.
- **Locking:** Press the "ONNAIS" button on the keypad to extend the deadbolt.
- **Privacy Mode:** The keypad features a "peek-proof" function allowing you to add random digits before and after

your actual password (up to 32 digits total) to obscure your code from onlookers.

- **Backlight:** The keypad is backlit for easy use at night. This feature can be toggled on or off.

Nature to Haven in One Second



Privacy proof code system

.....1732255136

12312

2157678451.....

Correct Password

Unlimited Random Numbers

Image: The keypad of the ONNAIS RV door lock, illustrating the peek-proof code entry system with random digits.

2. Remote Fob Operation

- The included remote fobs allow you to lock and unlock the door from up to 100 feet away.
- Press the unlock button on the fob to retract the deadbolt.
- Press the lock button on the fob to extend the deadbolt.

Surviving in thousands of times' attacks.



Image: A remote fob being used to unlock an RV door from a distance, highlighting the convenience of remote access.

3. Manual Key Override

- A hidden mechanical key slot is provided for backup access in case of battery failure or electronic malfunction.
- Insert the mechanical key into the keyhole and turn to unlock or lock the door.

Tailored for 95% of RVs

Only fit RV doors with right-side hinges



Note: Not for glass doors

Image: The ONNAIS RV door lock with the mechanical key inserted into its hidden slot for manual operation.

4. Interior Locking Mechanism

- The interior unit features a manual deadbolt lever for locking and unlocking from inside the RV.
- Additionally, there is a small switch to disable the exterior handle, preventing it from opening the door even if unlocked electronically.

MAINTENANCE

Battery Replacement

- The lock uses 2 Lithium Metal AA batteries (included).
- A low battery reminder will alert you when batteries need replacement.
- To replace, open the battery compartment on the interior unit, remove old batteries, and insert new ones, ensuring correct polarity.

- Use the provided battery removal tool if needed.

Your browser does not support the video tag.

Video: A user demonstrating the battery compartment and internal locking mechanism of the ONNAIS RV door lock.

TROUBLESHOOTING

- **Lock not responding to keypad/fob:** Check battery levels and replace if necessary. Ensure fobs are properly paired (refer to "How to Pair Two Fobs" video).
- **Deadbolt not extending/retracting fully:** Verify proper alignment during installation. Ensure no obstructions are in the door frame.
- **Accidental Lockout:** Always keep mechanical backup keys accessible outside the RV.
- **Keypad lights not working:** Check battery levels. Ensure the backlight feature is enabled if desired.


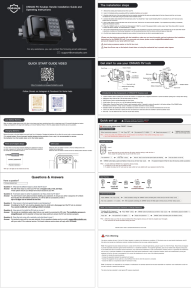

SPECIFICATIONS

| Feature | Detail |
|--------------------------------|--|
| Brand | ONNAIS |
| Model Name | ONNAIS RV Door Lock Guard SE (Model W007) |
| Lock Type | Keypad, Remote Fob, Mechanical Key |
| Material | Full Metal (Aviation Aluminum, Zinc Alloy Latch) |
| Color | Black |
| Product Dimensions (L x W x H) | 7.87 x 4.72 x 4.52 inches |
| Standard RV Opening Fit | 3.75" x 2.75" x 1.5" |
| Item Weight | 2.49 pounds |
| Batteries | 2 Lithium Metal AA batteries (included) |
| Remote Control Distance | Up to 100 feet (30 meters) |
| Keypad Features | Peek-Proof Code System, Backlight |

WARRANTY AND SUPPORT

The ONNAIS RV Keyless Entry Door Lock comes with a **2-year warranty**, ensuring peace of mind regarding product quality and performance. For any issues or support needs, please refer to the contact information provided in your product packaging or visit the official ONNAIS website.

Related Documents - W007

| | |
|---|---|
|  | <p>ONNAIS RV Keyless Handle Installation and Operating Instructions</p> <p>Comprehensive guide for installing and operating the ONNAIS RV Keyless Handle, including setup, programming, and troubleshooting.</p> |
|  | <p>ONNAIS RV Keyless Handle Lock: Installation Guide & Operating Instructions</p> <p>Comprehensive guide for installing and operating the ONNAIS RV Keyless Handle Lock. Learn setup, programming, troubleshooting, and key features for your RV.</p> |
|  | <p>ONNAIS Biometric Gun Safe Quick Start Guide</p> <p>A quick start guide for the ONNAIS Biometric Gun Safe, covering setup, fingerprint and password addition, and troubleshooting.</p> |

