

Hoover SH40210CA

Hoover MultiFloor Bagless Canister Vacuum Cleaner SH40210CA

User Instruction Manual

INTRODUCTION

This manual provides essential information for the safe and efficient operation, maintenance, and troubleshooting of your Hoover MultiFloor Bagless Canister Vacuum Cleaner, model SH40210CA. Please read all instructions carefully before using the appliance and retain this manual for future reference.

SAFETY INFORMATION

Always follow basic safety precautions when using electrical appliances to reduce the risk of fire, electric shock, or injury. This appliance is for household use only.

- Do not leave the appliance unattended when plugged in.
- Unplug from outlet when not in use and before cleaning or servicing.
- Do not use outdoors or on wet surfaces.
- Do not allow to be used as a toy. Close attention is necessary when used by or near children.
- Use only as described in this manual. Use only manufacturer's recommended attachments.
- Do not use with damaged cord or plug. If appliance is not working as it should, has been dropped, damaged, left outdoors, or dropped into water, return it to a service center.
- Do not pull or carry by cord, use cord as a handle, close a door on cord, or pull cord around sharp edges or corners. Do not run appliance over cord. Keep cord away from heated surfaces.
- Do not unplug by pulling on cord. To unplug, grasp the plug, not the cord.
- Do not handle plug or appliance with wet hands.
- Do not put any object into openings. Do not use with any opening blocked; keep free of dust, lint, hair, and anything that may reduce airflow.
- Keep hair, loose clothing, fingers, and all parts of body away from openings and moving parts.

- Do not pick up anything that is burning or smoking, such as cigarettes, matches, or hot ashes.
- Do not use to pick up flammable or combustible liquids, such as gasoline, or use in areas where they may be present.
- Do not use without dust cup and/or filters in place.

PRODUCT COMPONENTS

Familiarize yourself with the main components of your Hoover MultiFloor Bagless Canister Vacuum Cleaner.

- Canister Unit with Motor and Dirt Cup
- Flexible Hose
- Telescoping Wand
- Hard Floor Turbine Nozzle
- Multi-Surface Floor Nozzle
- Washable Filter System
- Retractable Power Cord



Image: The Hoover MultiFloor Bagless Canister Vacuum Cleaner SH40210CA, showing the main unit, hose, wand, and floor nozzle.

SETUP

Follow these steps to assemble your vacuum cleaner before first use.

1. **Unpack Components:** Carefully remove all parts from the packaging. Ensure all components listed in the 'Product Components' section are present.

2. **Attach Hose to Canister:** Insert the flexible hose into the suction inlet on the main canister unit until it clicks securely into place.
3. **Connect Wand to Hose:** Attach the telescoping wand to the handle end of the flexible hose. Ensure a firm connection.
4. **Attach Floor Nozzle:** Select the appropriate floor nozzle (Hard Floor Turbine Nozzle or Multi-Surface Floor Nozzle) and attach it to the end of the telescoping wand.
5. **Check Filters:** Before initial use, ensure all filters are correctly installed. Refer to the 'Maintenance' section for filter location and installation details.

OPERATING INSTRUCTIONS

Your Hoover MultiFloor Bagless Canister Vacuum Cleaner is designed for efficient cleaning across various surfaces.

Powering On and Off

- Plug the power cord into a suitable electrical outlet.
- Press the power button located on the canister unit to turn the vacuum on or off.

Using the Dual Nozzles

The vacuum includes two specialized nozzles for optimal cleaning:

- **Hard Floor Turbine Nozzle:** This nozzle uses air-driven action to effectively lift fine dust, grit, and debris from hard surfaces such as hardwood, tile, and laminate. It is ideal for delicate hard floors.
- **Multi-Surface Floor Nozzle:** This versatile nozzle is designed to transition smoothly between area rugs, low-pile carpets, and hard floors, providing comprehensive cleaning for your entire home.



Image: The vacuum nozzle effectively cleaning a hard floor, demonstrating debris collection.



Image: The vacuum nozzle moving from a carpeted area to a hard floor, illustrating its multi-surface capability.

Maneuverability and Above-Floor Cleaning

The lightweight design (approximately 8.4 kg / 13 lbs) and compact footprint allow for easy maneuverability around furniture and in tight spaces. The flexible hose and telescoping wand can be detached for convenient above-floor cleaning of stairs, upholstery, blinds, vents, and other hard-to-reach areas.



Image: A person using the Hoover canister vacuum on a hard floor, highlighting its ease of use and maneuverability.

Retractable Cord

The automatic retractable cord rewinds at the push of a button, ensuring quick and tangle-free storage. To retract, gently press the cord rewind button on the canister unit.

MAINTENANCE

Regular maintenance ensures optimal performance and extends the life of your vacuum cleaner.

Emptying the Dirt Cup

The vacuum features a touch-less bottom-release dirt cup for hygienic emptying.

1. Ensure the vacuum is unplugged from the power outlet.
2. Press the dirt cup release button to detach the dirt cup from the main canister unit.
3. Position the dirt cup over a waste bin.
4. Press the bottom-release button on the dirt cup to open the bottom flap and empty debris directly into the bin.
5. Close the bottom flap securely and reattach the dirt cup to the canister unit until it clicks into place.

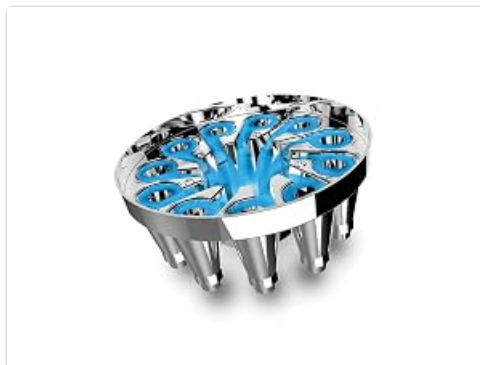


Image: A detailed view of the vacuum's transparent dirt cup, illustrating its design for easy monitoring of fill level.

Cleaning the Washable Filter

The washable, reusable filter helps maintain peak performance and eliminates ongoing filter replacement costs.

1. Unplug the vacuum cleaner.
2. Remove the dirt cup as described above.
3. Locate and remove the filter assembly from the dirt cup.
4. Rinse the filter under running water until the water runs clear. Do not use detergent or hot water.
5. Allow the filter to air dry completely for at least 24 hours before reinstallation. Ensure it is completely dry to prevent damage to the motor.
6. Reinstall the dry filter assembly into the dirt cup, then reattach the dirt cup to the canister unit.



Image: The vacuum's canister with the filter element visible, indicating its position for removal and cleaning.

Multi-Cyclonic Technology

The advanced 15x multi-cyclonic system continuously separates dirt and fine particles from the airstream, preventing filter clogging and maintaining consistent suction power throughout your cleaning session.



Image: An internal view or diagram illustrating the multi-cyclonic separation system within the vacuum's dirt cup.

TROUBLESHOOTING

Refer to this section for solutions to common issues you might encounter.

Problem	Possible Cause	Solution
Vacuum will not turn on	Not plugged in; No power at outlet; Thermal protector activated	Check plug; Check fuse/breaker; Allow vacuum to cool for 30 minutes, then restart.
Loss of suction	Dirt cup full; Filter clogged; Hose/nozzle blocked	Empty dirt cup; Clean/replace filter; Check hose and nozzles for obstructions.
Debris escaping from vacuum	Dirt cup not properly installed; Filter missing or damaged	Ensure dirt cup is securely latched; Check and properly install/replace filter.
Cord does not retract	Cord is tangled or jammed	Gently pull out a small amount of cord and press the retract button again. Guide the cord if necessary.

SPECIFICATIONS

Feature	Detail
Brand	Hoover
Model Number	SH40210CA
Power Source	Corded Electric
Item Weight	8.4 Kilograms

Feature	Detail
Filter Type	Cartridge, Washable
Special Features	Bagless, Lightweight, 15x Multi-Cyclonic Suction, Retractable Cord
Surface Recommendation	Hard Floor, Carpets, Area Rugs
Included Components	Canister, Hard Floor Turbine Nozzle, Multi-Surface Floor Nozzle

WARRANTY

This Hoover MultiFloor Bagless Canister Vacuum Cleaner (Model SH40210CA) is covered by a **3-year manufacturer's warranty** from the date of purchase. This warranty covers defects in material and workmanship under normal household use. Please retain your proof of purchase for warranty claims. For full warranty terms and conditions, please refer to the documentation included with your product or contact Hoover customer support.

SUPPORT

If you require further assistance or have questions not covered in this manual, please contact Hoover customer support. Contact information can typically be found on the Hoover official website or on the product packaging.