

[manuals.plus](#) /

- › [Yaheetech](#) /
- › [Yaheetech Rabbit Cage with Wheels Small Animal Furniture with 2 Removable Trays Grey Rabbit Cage \(75.5 cm x 50.5 x 67.5 cm\) User Manual](#)

Yaheetech YA59255524041101

Yaheetech Rabbit Cage with Wheels User Manual

Model: YA59255524041101

1. PRODUCT OVERVIEW

The Yaheetech Rabbit Cage is a versatile and durable habitat designed for small animals. It features a multi-level design, easy mobility with wheels, and convenient cleaning options. This manual provides essential information for its proper setup, operation, and maintenance.



Figure 1.1: Assembled Yaheetech Rabbit Cage. This image shows the complete cage with its multi-level structure, ramp, and pull-out trays, ready for use.



Platform/Ramp: 5 kg



Grid panel: 10 kg

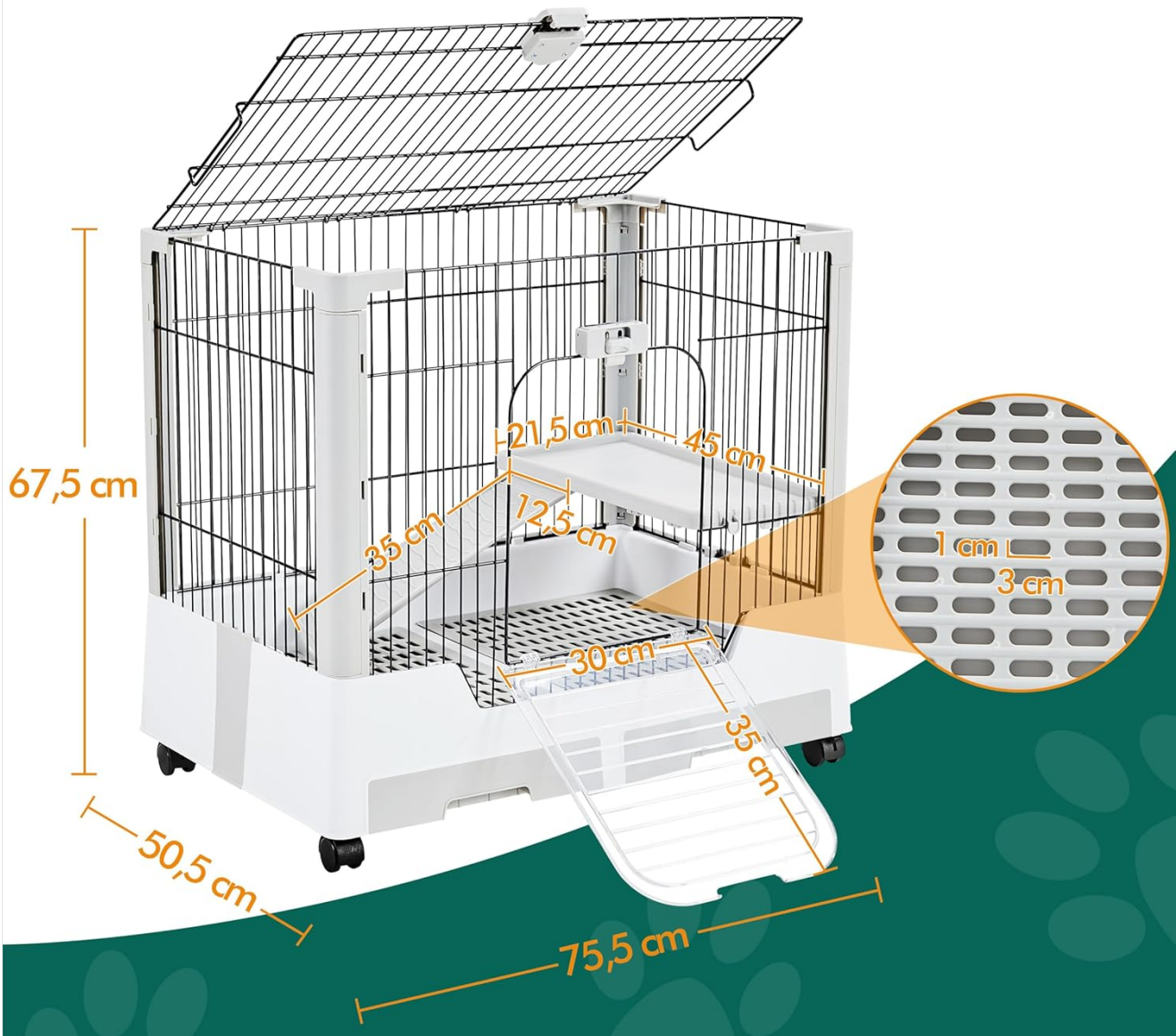


Figure 1.2: Cage Dimensions and Load Capacity. The image illustrates the overall dimensions of the cage (75.5 cm x 50.5 cm x 67.5 cm) and specifies the maximum load for the platform/ramp (5 kg) and grid panel (10 kg).

2. SETUP AND ASSEMBLY

The Yaheetech Rabbit Cage is designed for straightforward, tool-free assembly. While one person can assemble it, two people may find it easier, especially when handling larger components.

2.1 Assembly Steps

1. Unpack all components and verify against the parts list (not provided in this manual, refer to product packaging).
2. Assemble the main wire frame sections by interlocking them. The design allows for assembly without screws.
3. Insert the base and grid panels into the bottom section of the cage.
4. Attach the platform and ramp to their designated positions within the cage.
5. Install the four wheels into the base of the cage. If wheels are resistant, applying a small amount of hand cream or lubricant to the insertion point can aid installation. Ensure two of the wheels are lockable for stability.

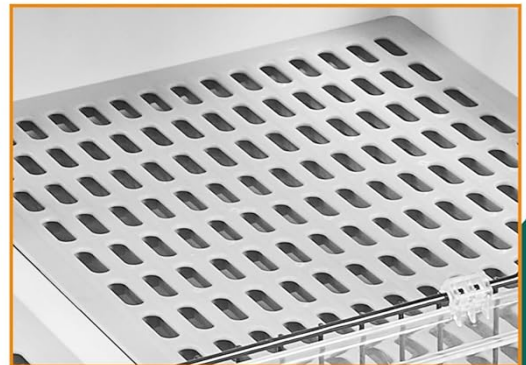
6. Slide the two removable litter trays into the designated slots at the bottom of the cage.
7. Ensure all safety locks and latches are functional and securely closed after assembly.



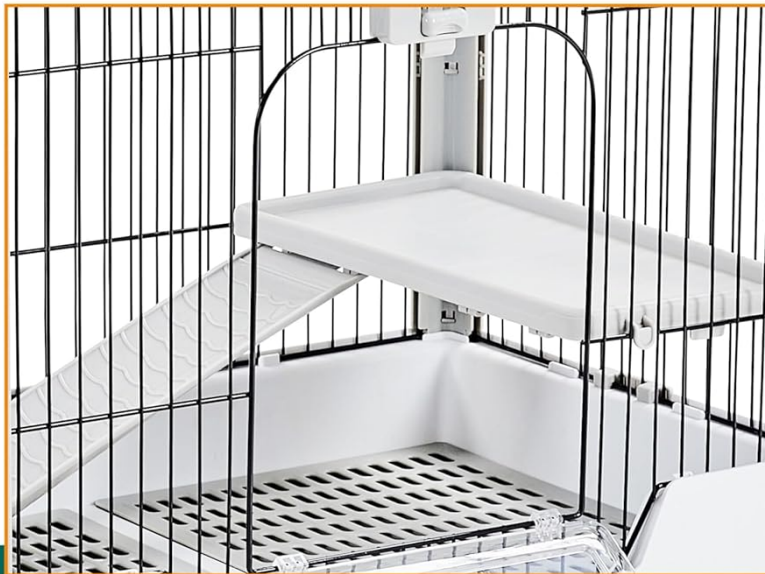
Front Opening & Widely-open Top



Safety Locks



Easy-to-clean Grid Panel



Balcony with Anti-slip Ramp



Pull-out Litter Trays

Figure 2.1: Key Features. This image highlights the safety locks, the widely-open top, the balcony with an anti-slip ramp, the easy-to-clean grid panel, and the pull-out litter trays, all crucial for assembly and daily use.

LOCK & ROLL WITH EASE



Four 360-degree swivel wheels are free to move in any direction
Two lockable wheels provide extra stability

Figure 2.2: Lockable Wheels. The image shows the 360-degree swivel wheels and the locking mechanism, which provides stability when the cage is stationary.

3. OPERATING INSTRUCTIONS

This section details how to use the cage features for optimal pet comfort and owner convenience.

3.1 Mobility and Stability

- The cage is equipped with four 360-degree swivel wheels for easy movement. To move the cage, simply unlock the two lockable wheels and push the cage to the desired location.
- For stability, especially when the cage is stationary or on an uneven surface, engage the locks on the two lockable wheels. This prevents unintended movement.

3.2 Access and Security

- **Front Opening:** The cage features a front opening door for daily access to your pet. Ensure the door is securely latched using the provided locks to prevent escapes.

- **Widely-Open Top:** The top of the cage can be fully opened, providing complete access to the interior. This feature is particularly useful for placing or removing larger items, decorating the cage, or for thorough cleaning.
- **Safety Locks:** All access points are secured with safety locks to ensure your pet remains safely inside the cage. Always double-check that all locks are engaged after interacting with your pet or cleaning the cage.



Figure 3.1: Safety Lock Detail. This close-up shows the mechanism of the safety lock, which secures the cage doors and top opening.

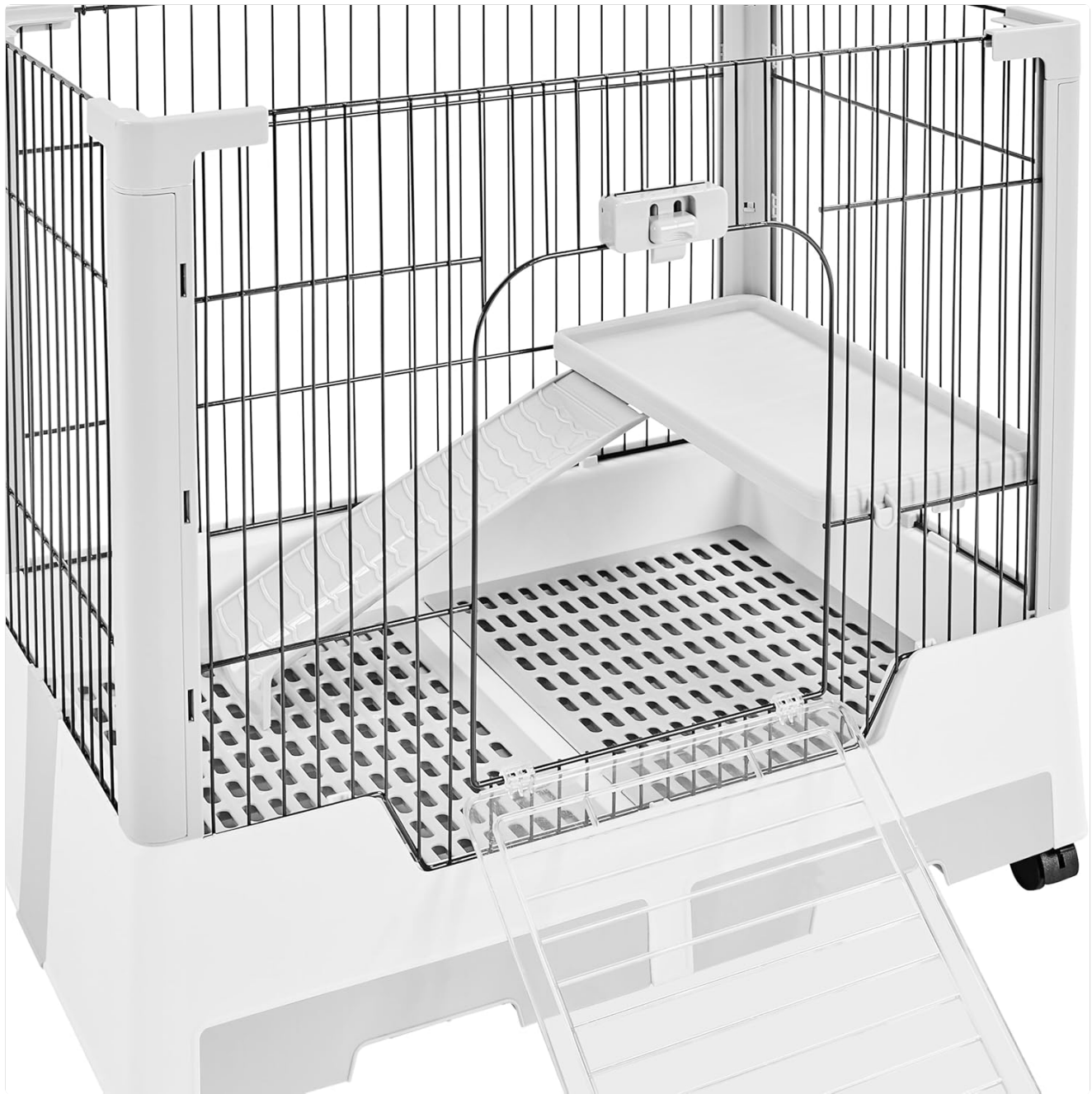


Figure 3.2: Interior Balcony and Ramp. The image displays the internal platform (balcony) and the anti-slip ramp, allowing pets to move between levels.

4. MAINTENANCE AND CLEANING

Regular cleaning is essential for maintaining a hygienic environment for your pet. The cage is designed for easy and efficient cleaning.

4.1 Daily Cleaning

- **Removable Litter Trays:** The cage features two pull-out litter trays at the bottom. These trays collect waste, hay, fur, and food particles. Simply slide them out, empty the contents, clean with mild soap and water, rinse thoroughly, and dry before reinserting.
- **Grid Panels:** The grid panels above the trays help sift waste, keeping your pet's living area cleaner. These can be wiped down or removed for deeper cleaning if necessary.

4.2 Deep Cleaning

- For a more thorough cleaning, the widely-open top provides full access to the cage interior.
- Wipe down all surfaces of the cage, including wire mesh, platforms, and ramps, with a pet-safe cleaner or mild soap and water.
- Ensure all components are completely dry before reassembling and returning your pet to the cage.
- The polypropylene material of the base is durable and resistant to urine, making it easy to clean and maintain hygiene.



Figure 4.1: Pull-out Litter Trays. This image shows the two removable trays designed for easy waste collection and cleaning.

5. TROUBLESHOOTING AND IMPORTANT NOTES

This section addresses common concerns and provides important considerations for using your Yaheetech Rabbit Cage.

5.1 Animal Suitability

- This cage is primarily designed for rabbits. It is also suitable for other small animals such as guinea pigs, ferrets, and chinchillas.
- **Important:** The bar spacing of this cage is 20 millimeters (2 cm). This spacing is **not suitable for very small animals like hamsters or rats**, as they may be able to escape.
- For larger rabbits or very active animals, monitor the ramp's durability. If signs of wear or weakness appear, consider reinforcing or replacing the ramp to ensure pet safety.

5.2 Assembly Issues

- If wheels are difficult to insert, apply a small amount of hand cream or a similar lubricant to the stem of the wheel before pushing it into the socket.



Figure 5.1: Suitable Animals. This diagram illustrates various small animals that can inhabit the cage, including ferrets, rabbits, chinchillas, squirrels, cats, and guinea pigs. Note the bar spacing warning for very small animals.

6. SPECIFICATIONS


| | |
|--------------------------------|---|
| Model Number | YA59255524041101 |
| Product Dimensions (L x W x H) | 75.5 cm x 50.5 cm x 67.5 cm |
| Product Weight | 9.65 kg |
| Material | Metal, Polypropylene (PP) |
| Color | White and Grey |
| Bar Spacing | 20 Millimeters (2 cm) |
| Number of Levels | 2 |
| Platform/Ramp Load Capacity | 5 kg |
| Grid Panel Load Capacity | 10 kg |
| Specific Uses | Indoors |
| Special Features | Wheeled, Easy to Assemble, Multi-level, Removable Trays, Open Top |

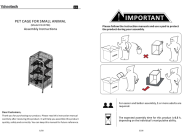




7. WARRANTY AND SUPPORT

Information regarding product warranty and customer support is not provided within this manual. For warranty details, technical assistance, or to inquire about replacement parts, please refer to the product packaging or visit the official Yaheetech website. You may also contact the seller directly through your purchase platform for support.

© 2025 Yaheetech. All rights reserved.

Related Documents - YA59255524041101

| | |
|---|--|
|  <p>611117</p> <p>10</p> | <p>Yaheetech Rolling 2-Story Animal Cage - Assembly Manual</p> <p>This document provides a comprehensive assembly manual for the Yaheetech Rolling 2-Story Animal Cage. It includes important safety information, a detailed parts list, and step-by-step instructions for assembling the cage, which is suitable for small animals like chinchillas and rats.</p> |
|---|--|

| | |
|---|---|
|  | <p>Yaheetech Pet Cage for Small Animal Assembly Instructions (Model 610784)</p> <p>Detailed assembly instructions for the Yaheetech Pet Cage for Small Animals (Model 610784), covering safety guidelines, parts identification, and step-by-step assembly procedures.</p> |
|  | <p>Yaheetech 591794 Bird Cage Assembly Instructions and Guide</p> <p>Detailed, step-by-step assembly instructions for the Yaheetech 591794 bird cage, including a parts list, safety warnings, and customer support information. Ensure proper setup for your pet bird.</p> |
|  | <p>Yaheetech 593039 Pet Cage Assembly and Care Instructions</p> <p>Detailed guide for assembling the Yaheetech 593039 pet cage, including parts list, step-by-step instructions, safety warnings, and maintenance advice.</p> |
|  | <p>Yaheetech 614097 Stackable Dog Crate with Divider - Installation Manual</p> <p>Detailed installation manual for the Yaheetech 614097 stackable dog crate. Provides step-by-step assembly instructions, parts list, and important safety information for setting up your heavy-duty pet cage.</p> |
|  | <p>Yaheetech 592056 Bird Cage Instruction Manual</p> <p>Comprehensive instruction manual for the Yaheetech 592056 bird cage. Learn how to assemble, use, and maintain your bird cage for optimal pet comfort and safety. Includes parts list and care tips.</p> |