

## Akko V3 Cream Black Pro

# Akko V3 Creamy Black Pro Keyboard Switch Instruction Manual

Model: V3 Cream Black Pro | Brand: Akko

## INTRODUCTION

The Akko V3 Creamy Black Pro Keyboard Switches are designed for mechanical gaming keyboards, offering a linear typing experience. These 5-pin switches feature an enhanced design with alloy copper and palladium gold contacts for improved conductivity, stability, and durability. The dustproof stem further contributes to a stable and consistent typing feel.

This manual provides detailed information on the features, specifications, installation, and maintenance of your Akko V3 Creamy Black Pro switches to ensure optimal performance and longevity.

## KEY FEATURES

- **Akko V3 Generation Pro Design:** Features alloy copper and palladium gold contacts for superior conductivity, stability, and durability.
- **Smooth & Creamy Linear Feel:** Constructed with POM/PC/PA materials and lubed rails for a satisfying, smooth typing experience with a 55gf operating force.
- **Dustproof Stem:** Enhances switch stability and prevents dust ingress, contributing to a longer lifespan.
- **MX Style Compatibility:** Designed with an MX style structure, ensuring compatibility with most keycap sets featuring an X-cross stem.
- **Built-in LED Slot:** Equipped with an LED slot for LED Mod/Assembly and SMD compatibility (LED underneath the switch), allowing for custom lighting.
- **Durability:** Engineered for longevity with an approximate lifespan of 60 million keystrokes based on laboratory tests.



Image: Akko V3 Creamy Black Pro switches installed in a mechanical keyboard, showcasing their appearance.

## SPECIFICATIONS

<b>Switch Type</b>	Linear
<b>Operating Force</b>	50 ± 5gf (55gf for Creamy Black Pro)
<b>Pre-Travel</b>	2.0 ± 0.5mm
<b>Total Travel</b>	3.6mm
<b>Tactile Travel</b>	N/A (Linear Switch)
<b>Tactile Force</b>	N/A (Linear Switch)
<b>Durability</b>	Approx. 60 million keystrokes

<b>Pin Configuration</b>	5-Pin
<b>Stem Type</b>	Dustproof MX Style
<b>Materials</b>	POM/PC/PA (housing and stem)



Image: Detailed specifications of the Akko V3 Creamy Black Pro switch, including travel and force measurements.

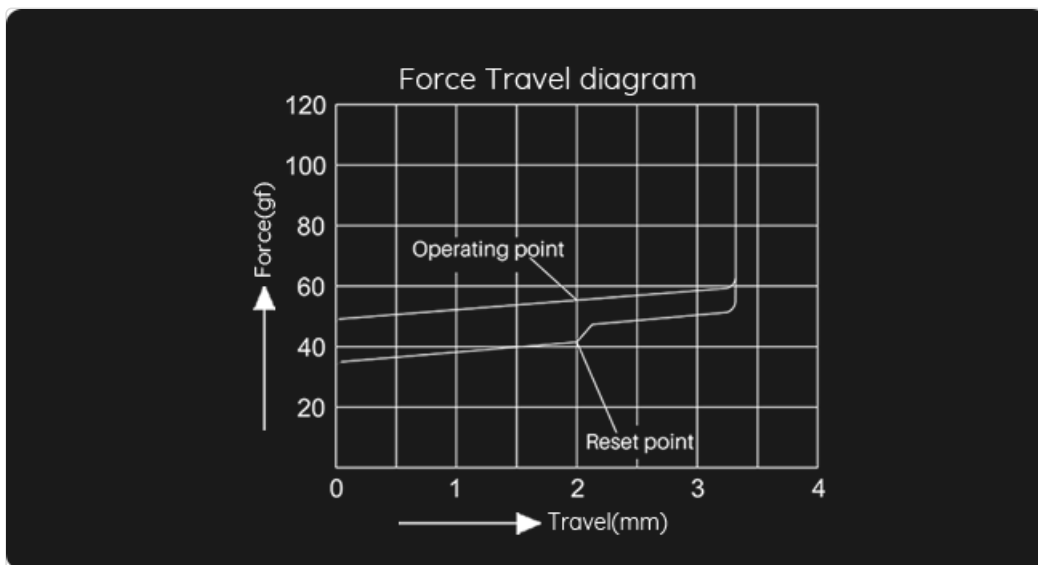


Image: Force-travel diagram illustrating the linear actuation curve of the Akko V3 Creamy Black Pro switch.

## SETUP AND INSTALLATION

Installing Akko V3 Creamy Black Pro switches into a compatible hot-swappable mechanical keyboard is a straightforward process. Follow these steps carefully to avoid damage to your switches or keyboard.

- 1. Prepare Your Keyboard:** Ensure your keyboard is unplugged and powered off.
- 2. Remove Keycaps:** Use a keycap puller to gently remove the existing keycaps from the switches you intend to replace.

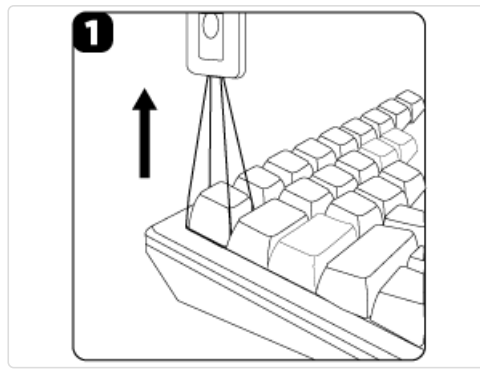


Image: Illustration showing how to remove keycaps using a keycap puller.

- 3. Remove Old Switches (if applicable):** If replacing existing switches, use a switch puller tool to carefully extract them from the PCB. Gently press the clips on the top and bottom of the switch and pull upwards.

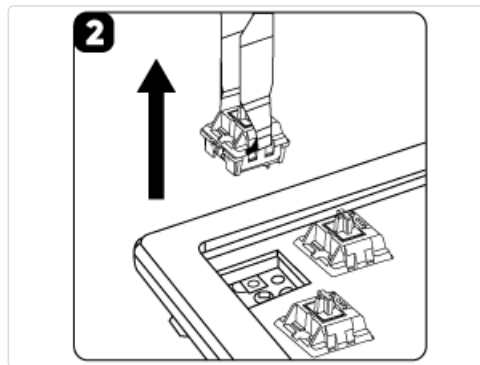


Image: Illustration demonstrating the removal of a keyboard switch using a switch puller tool.

- 4. Align New Switches:** Position the new Akko V3 Creamy Black Pro switch over the desired socket on the keyboard's PCB. Ensure the pins on the bottom of the switch align correctly with the holes on the PCB. The 5-pin design provides extra stability.

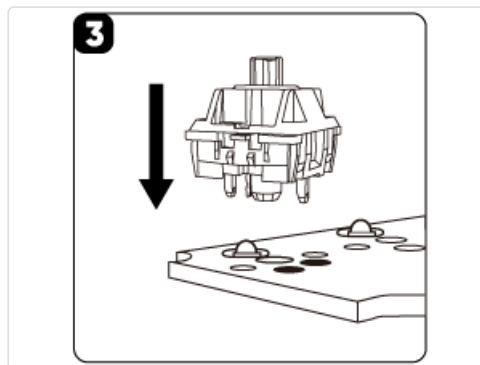


Image: Illustration showing the correct alignment of a new switch before insertion into the PCB.

- 5. Install New Switches:** Gently press the new switch straight down into the PCB until it clicks into place. Do not force the switch. If resistance is met, remove the switch, check for bent pins, straighten them if necessary, and re-attempt insertion.

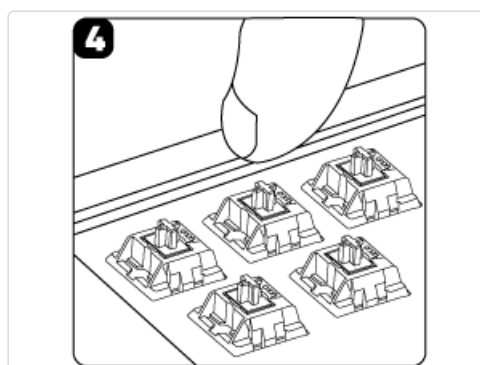


Image: Illustration depicting the gentle pressing of new switches into the keyboard's PCB.

6. **Test Switches:** After installing all switches, plug in your keyboard and test each key to ensure proper functionality.
7. **Reinstall Keycaps:** Once all switches are confirmed to be working, reattach your keycaps.



Type: Linear

Pre-Travel:  $2.0 \pm 0.5\text{mm}$

Operating Force:  $50 \pm 5\text{gf}$

Tactile Travel: N/A

Total Travel: 3.6mm

Tactile Force: N/A

Image: A close-up view of the Akko V3 Creamy Black Pro switches, highlighting their design.

## OPERATING CHARACTERISTICS

The Akko V3 Creamy Black Pro switches are linear switches, meaning they provide a consistent, smooth keystroke without a tactile bump or audible click. This makes them ideal for users who prefer a fluid typing experience or require rapid, uninterrupted key presses for gaming.

- **Actuation:** The switch actuates at approximately 2.0mm of travel.
- **Force:** An operating force of  $50 \pm 5\text{gf}$  is required to actuate the switch, providing a medium-heavy feel.
- **Sound Profile:** These switches are designed to produce a creamy and smooth sound, often described as "thocky" or "clacky" depending on the keyboard build and keycaps.

Your browser does not support the video tag.

Video: Official Akko V3 Creamy Black Switch Sound Test. This video demonstrates the auditory feedback of the switches during typing.

## MAINTENANCE

---

Proper maintenance can extend the lifespan and maintain the performance of your Akko V3 Creamy Black Pro switches.

- **Regular Cleaning:** Periodically remove keycaps and use compressed air to clear dust and debris from around the switches. A soft brush can also be used.
- **Avoid Liquid Spills:** Liquids can damage switches and the keyboard PCB. In case of a spill, immediately unplug the keyboard, remove keycaps, and allow it to dry completely before reassembly.
- **Gentle Handling:** When removing or installing keycaps and switches, apply gentle, even pressure to avoid bending switch pins or damaging the switch housing.
- **Lubrication (Optional):** While Akko V3 Pro switches come factory-lubed, advanced users may choose to re-lube them for a customized feel. This should only be done by experienced individuals to avoid over-lubrication or damage.

## TROUBLESHOOTING

---

If you encounter issues with your Akko V3 Creamy Black Pro switches, consider the following troubleshooting steps:

- **Key Not Registering:**
  - Ensure the switch is fully seated in the PCB.
  - Remove the switch and check for bent pins. Carefully straighten any bent pins with tweezers.
  - Test the switch in another socket or try a different switch in the problematic socket to isolate the issue.
- **Inconsistent Feel/Sound:**
  - Ensure the keycap is properly installed and not interfering with the switch housing.
  - Check for any debris or foreign objects inside the switch.
  - If the switch was recently installed, ensure pins were not bent during insertion, which can affect travel.
- **Stuck or Sticky Switch:**
  - This can sometimes be caused by excessive lubrication or a foreign particle. Try actuating the switch repeatedly. If the issue persists, consider replacing the switch.

If these steps do not resolve the issue, please refer to the Warranty & Support section for further assistance.

## WARRANTY AND SUPPORT

---

Akko V3 Creamy Black Pro switches come with a 12-month warranty on parts for all new products, covering defects not caused by man-made damage. Man-made damage includes, but is not limited to, immersion in liquid, dropping, or excessive force on wires.

Disassembling the keyboard without manufacturer/seller's instruction will immediately void the warranty. If the warranty window expires, customers may need to pay for repairs. Akko may also provide instructions for self-repair, but users assume full responsibility for any loss during self-repair.

For further support or warranty claims, please visit the official Akko store or contact Akko customer service.

[Visit the Akko Store](#)

