

## KRUX KRX0137

# ENDORFY Krux Qara 60% Mechanical Keyboard User Manual

Model: KRX0137

## INTRODUCTION

This manual provides comprehensive instructions for the setup, operation, maintenance, and troubleshooting of your ENDORFY Krux Qara 60% Mechanical Keyboard. Please read this manual thoroughly before using the product to ensure proper functionality and longevity.

## PRODUCT OVERVIEW

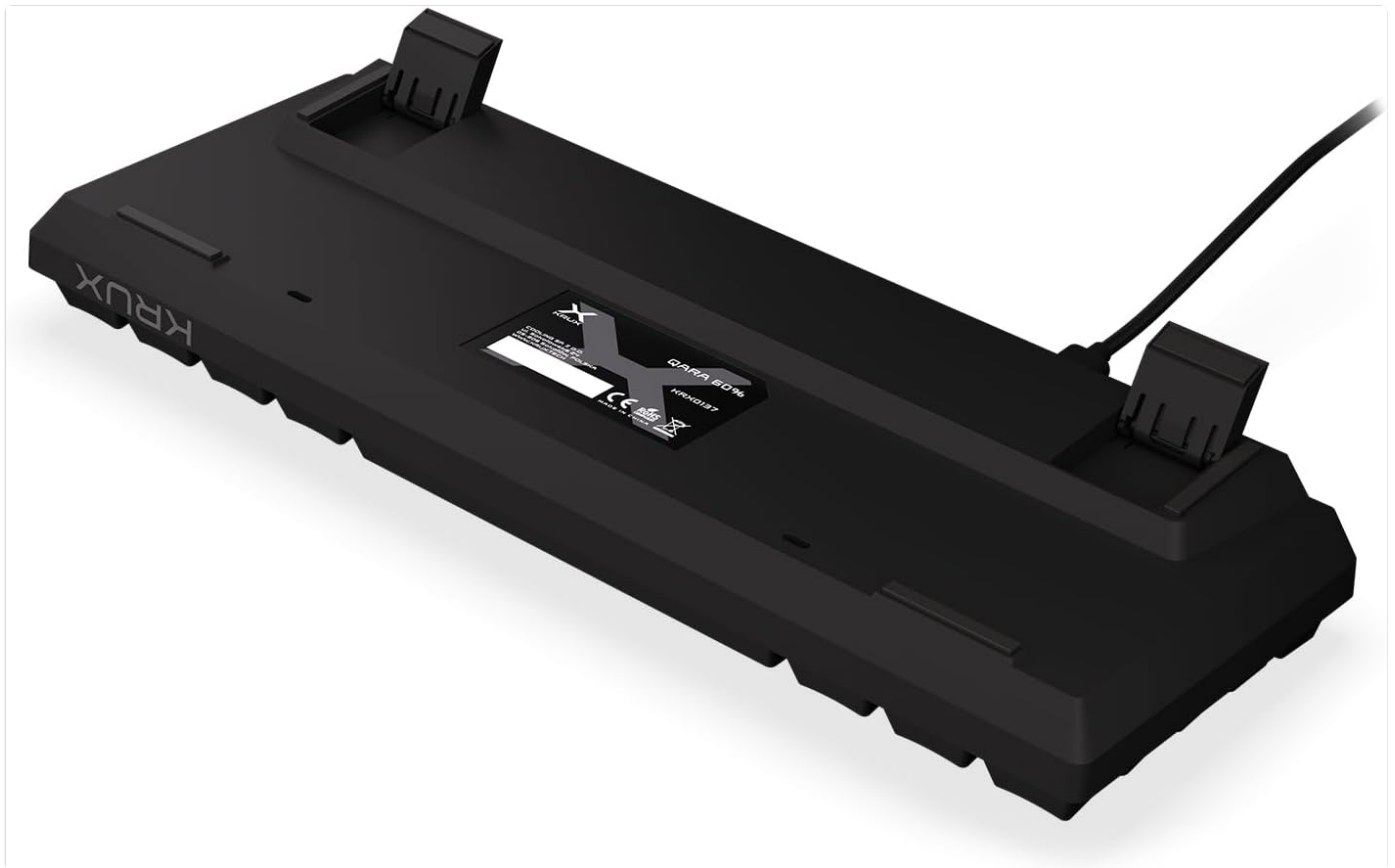
The ENDORFY Krux Qara 60% is a compact mechanical gaming keyboard designed for performance and portability. It features Outemu Red Mechanical Switches, zone RGB backlighting, and a durable construction.



**Figure 1:** Front view of the ENDORFY Krux Qara 60% Mechanical Keyboard, showcasing its compact 60% layout and vibrant RGB zone backlighting. The keyboard features black keycaps with white legends.



**Figure 2:** Top-down perspective of the keyboard, highlighting the keycap layout and the integrated USB-A cable connection point at the top center.



**Figure 3:** Rear view of the keyboard, showing the product label with model information (KRX0137) and certification marks. The two adjustable feet are visible in their folded position.

## PACKAGE CONTENTS

---

Ensure all items are present before proceeding with setup:

- ENDORFY Krux Qara 60% Mechanical Keyboard
- USB cable (integrated)
- User Manual (this document)

## SETUP

---

1. **Unpacking:** Carefully remove the keyboard and its accessories from the packaging.
2. **Connection:** Connect the integrated USB-A cable from the keyboard to an available USB port on your computer (PC, Linux, Mac).
3. **Driver Installation:** The keyboard is plug-and-play and typically does not require additional drivers for basic functionality. Your operating system should automatically recognize the device.
4. **Placement:** Place the keyboard on a stable, flat surface. You may adjust the keyboard height using the foldable feet located on the underside for ergonomic comfort.





**Figure 5:** A close-up view of the keycaps, demonstrating the RGB backlighting effect and the secondary functions printed on the front of some keys.

## MAINTENANCE

Regular maintenance helps prolong the life of your keyboard:

- **Cleaning:** Use a soft, dry cloth to wipe the surface of the keyboard. For dust and debris between keycaps, use compressed air. Avoid liquid cleaners directly on the keyboard.
- **Spills:** In case of liquid spills, immediately disconnect the keyboard from your computer. Turn it upside down to drain liquid and allow it to dry completely before reconnecting. Do not use a hairdryer as excessive heat can damage components.
- **Storage:** Store the keyboard in a cool, dry place away from direct sunlight and extreme temperatures.

## TROUBLESHOOTING

Problem	Possible Cause	Solution
Keyboard not responding	Loose USB connection, faulty USB port, system error.	Ensure USB cable is securely connected. Try a different USB port. Restart your computer.
Keys not registering or double-typing	Dust/debris under keycap, switch malfunction.	Use compressed air to clean around the affected key. If problem persists, contact support.
Backlight not working or inconsistent	Backlight setting, software glitch.	Press <b>Fn + Enter</b> to adjust brightness. Cycle through modes with <b>Fn + \ </b> . Restart computer.

Problem	Possible Cause	Solution
Fn key combinations not working	Incorrect key combination, software conflict.	Refer to the "Operating Instructions" section for correct combinations. Ensure no conflicting software is running.

## SPECIFICATIONS

- **Model:** KRX0137
- **Keyboard Type:** 60% Mechanical Gaming Keyboard
- **Switches:** Outemu Red Mechanical Switches
- **Backlight:** Zone RGB
- **Connectivity:** Wired USB-A
- **Dimensions:** 29.1 x 10.1 x 3.9 cm (11.46 x 3.98 x 1.54 inches)
- **Weight:** 506 g (1.11 lbs)
- **Compatible Operating Systems:** Windows 10, Mac OS X 10.12 Sierra, Linux
- **Included Components:** USB cable (integrated)



## WARRANTY AND SUPPORT





For warranty information and technical support, please refer to the official KRUX website or contact your local retailer. Keep your proof of purchase for warranty claims.

**Manufacturer:** Krux

**Website:** [www.krux.tech](http://www.krux.tech) (Note: This is a placeholder link, please refer to the official manufacturer's website for accurate support information.)

### Related Documents - KRX0137

	<a href="#">KRUX QARA 60% Keyboard User Guide and Warranty</a> Comprehensive guide for the KRUX QARA 60% keyboard, detailing function key mappings, multimedia controls, connectivity, and warranty information. Learn how to use your keyboard effectively and understand its 2-year manufacturer warranty terms.
	<a href="#">KRUX CRATO RGB Keyboard: Functions, Backlight, and Usage Guide</a> Comprehensive guide to the KRUX CRATO RGB keyboard, detailing multimedia key functions, backlight customization, knob controls, and warranty information.

 <p>NEO PRO RGB WIRELESS</p> <p>PRODUCT NAME: KRUX NEO PRO RGB WIRELESS TYPE: WIRELESS GAMING KEYBOARD Model: NEO Keyboard Type: MECHANICAL Backlight Type: RGB Connectivity: 2.4 GHz Battery Type: RECHARGEABLE Dimensions: 440 x 130 x 40 mm Weight: 1.2 kg Warranty: 2 Years www.krux.tech</p>	<p><a href="#">KRUX Neo Pro RGB Wireless Gaming Keyboard - User Manual and Features</a></p> <p>Comprehensive guide to the KRUX Neo Pro RGB Wireless gaming keyboard. Covers specifications, setup, wireless connectivity, charging, backlight customization, key functions, OS switching, and warranty information.</p>
 <p>EDIS 1000</p>	<p><a href="#">Klux EDIS 1000 USB Microphone User Guide</a></p> <p>User guide for the Krux EDIS 1000 USB Microphone, including installation, technical specifications, and warranty information.</p>
 <p>OFFICE WIRELESS SET KX0-8400, 2.4 GHz</p> <p>CONNECTIONS / INSTALLATION</p> <p>BATTERIES / CHARGING</p> <p>WARRANTY / SUPPORT</p> <p>www.krux.tech</p>	<p><a href="#">Klux KX0-8400 Office Wireless Set - User Guide and Specifications</a></p> <p>Official user guide for the Krux KX0-8400 Office Wireless Set, detailing connections, battery information, key functions, warranty, and mouse layout. Includes technical specifications and usage guidelines.</p>
 <p>ARM 200L / ARM 200S KRXH002 / KRXH003</p> <p>CAUTION: Do not touch the microphone when it is hot. It may cause burns.</p> <p>www.krux.tech</p>	<p><a href="#">KRUX ARM 200L / ARM 200S Microphone Boom Arm - Technical Specifications and Mounting Guide</a></p> <p>Detailed information on the KRUX ARM 200L and ARM 200S adjustable microphone boom arms, including technical specifications, mounting instructions, and warranty details.</p>