

FERUERW 14 Grid

FERUERW Hexagon Garage Lights

Model: 14 Grid (Non-Dimmable)

1. INTRODUCTION

Thank you for choosing the FERUERW Hexagon Garage Lights. This product is designed to provide high-quality, energy-efficient illumination for various indoor spaces such as garages, workshops, basements, and car detailing shops. With its advanced LED technology, it delivers bright and uniform lighting, enhancing visibility and creating a well-lit environment.

This manual provides essential information for the safe and proper installation, operation, and maintenance of your new lighting system. Please read it thoroughly before beginning installation and retain it for future reference.

2. IMPORTANT SAFETY INSTRUCTIONS

- **Electrical Safety:** Always disconnect power at the circuit breaker before installing, servicing, or cleaning the fixture. Ensure the voltage supply matches the product's specifications (110V).
- **Qualified Personnel:** Installation should be performed by a qualified electrician or a person with sufficient knowledge of electrical systems to avoid electric shock or fire.
- **Proper Grounding:** Ensure the fixture is properly grounded to prevent electrical hazards.
- **Avoid Direct Eye Exposure:** Do not stare directly into the LED lights when they are illuminated, as this may cause eye strain or damage.
- **Indoor Use Only:** This product is designed for indoor use. Do not expose it to water or high humidity environments unless explicitly stated otherwise. The product is water repellent, but not fully waterproof.
- **Handle with Care:** Although durable, handle light tubes and connectors with care to prevent damage.
- **Ventilation:** Ensure adequate ventilation around the fixture to prevent overheating.

3. PACKAGE CONTENTS

Please verify that all components are present and undamaged before proceeding with installation. If any parts are missing or damaged, contact customer support.



Figure 3.1: Overview of included components.

- Light Tubes (1175mm and 440mm lengths)
- Power Cable (0.5m)
- Plug Power Cord (1.5m)
- Connectors (90° two-way, 90° T, 120° two-way, 120° Y, 180° two-way)
- Mounting Clips
- Screws
- Expansion Connectors (Anchoring/Nuts)
- Zip Ties
- Instruction Manual

4. PRODUCT SPECIFICATIONS

Brand	FERUERW
Model Name	Hexagon LED Garage Light
Model Number	14 Grid
Style	Non-dimmable
Light Source Type	LED
Wattage	672 watts
Brightness	86400 Lumens
Color Temperature	6500 Kelvin (White Light)
Voltage	110 Volts
Material	Plastic
Installation Type	Ceiling Mount, Hanging
Indoor/Outdoor Usage	Indoor
Product Dimensions	47"L x 9"W x 7.5"H
Item Weight	19.61 pounds
UPC	788362859688

5. SETUP AND INSTALLATION

The FERUERW Hexagon Garage Lights are designed for easy and hassle-free installation. Follow these steps to set up your lighting system.

5.1 Planning Your Layout

Before assembly, plan your desired hexagonal pattern on the ceiling. Consider the dimensions of your space and the coverage needed. The system is modular, allowing for various configurations.

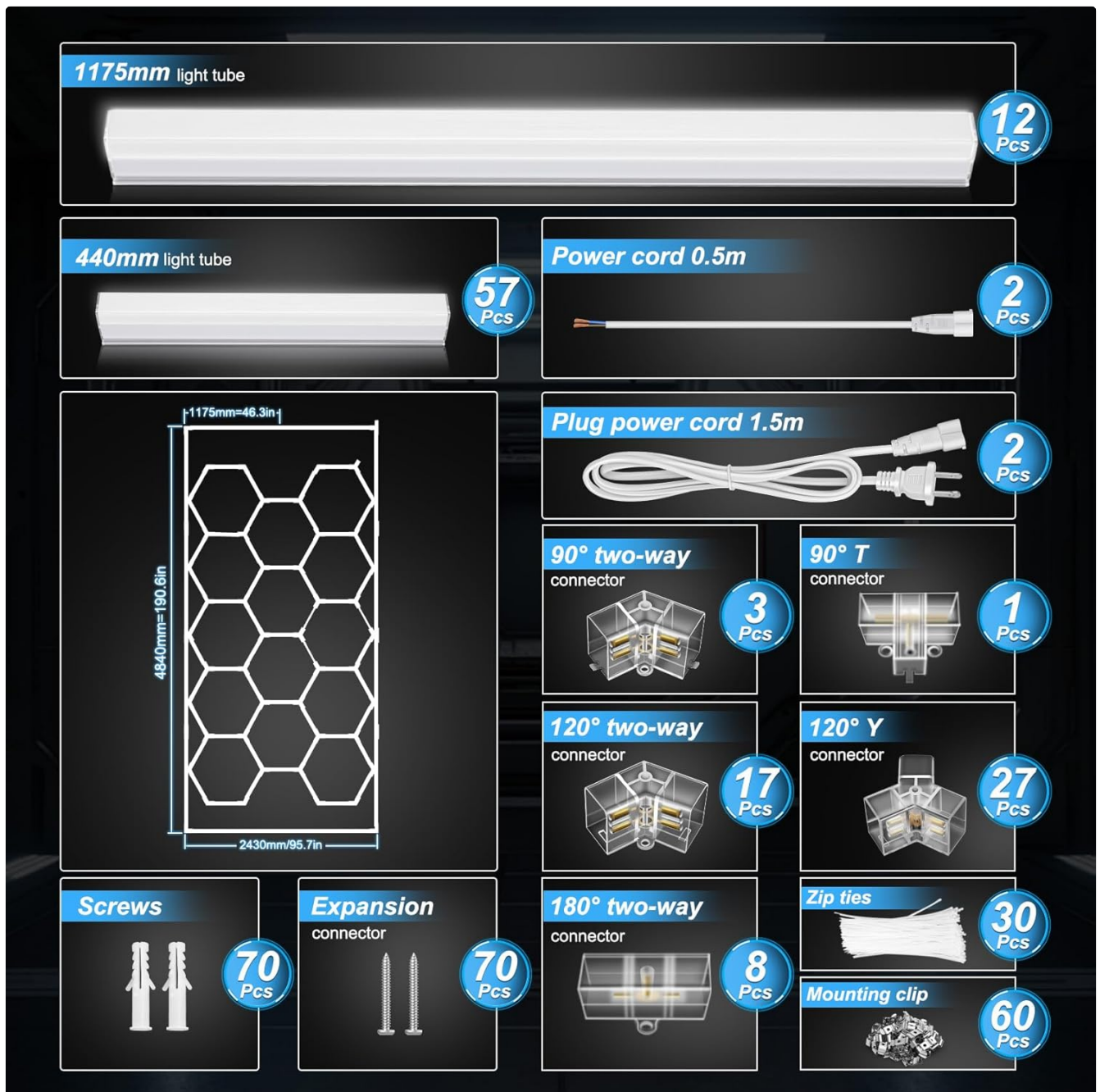


Figure 5.1: Example of a hexagonal light pattern.

5.2 Assembly Steps

1. **Connect Light Tubes:** Use the provided connectors (90°, 120°, 180° as needed) to join the light tubes according to your planned layout. Ensure each connection is secure and the tubes snap firmly into place.
2. **Power Connection:** Attach the power cable to one of the connectors in your assembled grid. The system can be powered via the plug power cord or hardwired by a professional.

FERUERW		
Brightness	 <p>Higher brightness 86400LM</p>	Others  <p>Normal brightness 65000LM</p>
Material	 <p>High quality PC flame retardant material</p>	 <p>Ordinary plastic is fragile</p>
Mounting	 <p>Concealed snap mounting</p>	 <p>Exposed mounting</p>

Figure 5.2: Close-up of light tube and connector assembly.

5.3 Mounting the System

3. **Secure Mounting Clips:** Mark the positions for the mounting clips on your ceiling based on your assembled light grid. Use the provided screws and expansion connectors to securely fasten the mounting clips to the ceiling.
4. **Attach Light Grid:** Carefully lift the assembled light grid and snap it into the secured mounting clips. Ensure the grid is evenly supported and stable.
5. **Cable Management:** Use the included zip ties to neatly secure any excess wiring or power cables, ensuring a clean and professional appearance.



Figure 5.3: Concealed snap mounting for a clean finish.

5.4 Installation Video Reference

For a visual guide on the installation process, please refer to the following video:

Your browser does not support the video tag.

Video 5.1: Installation overview for Hexagon Garage Lights. This video demonstrates the assembly and mounting process.

6. OPERATING INSTRUCTIONS

Once properly installed, operating your FERUERW Hexagon Garage Lights is straightforward:

- **Power On/Off:** If connected to a standard wall outlet, simply plug in the power cord to turn the lights on. Unplug to turn them off. If hardwired to a light switch, use the wall switch to control the power.
- **Non-Dimmable:** Please note that this specific model (14-Grids, Non-Dimmable) does not support dimming functionality. The lights will operate at full brightness when powered on.



Figure 6.1: The lights provide high brightness (86400LM) for optimal illumination.

7. MAINTENANCE

To ensure the longevity and optimal performance of your FERUERW Hexagon Garage Lights, follow these simple maintenance guidelines:

- **Cleaning:** Before cleaning, ensure the power is disconnected. Use a soft, dry, or slightly damp cloth to wipe down the light tubes and connectors. Avoid abrasive cleaners or solvents that could damage the plastic.
- **Connection Check:** Periodically inspect all connections to ensure they remain secure. Loose connections can lead to intermittent operation.
- **Damage Inspection:** Regularly check for any signs of physical damage to the light tubes, connectors, or wiring. If damage is found, discontinue use and contact customer support.

8. TROUBLESHOOTING

If you encounter any issues with your FERUERW Hexagon Garage Lights, please refer to the following troubleshooting steps:

Problem	Possible Cause	Solution
Lights do not turn on.	No power supply, loose connection, faulty power cord.	Check if the power cord is securely plugged into a working outlet. Verify that the circuit breaker is not tripped. Inspect all light tube connections for tightness. Test the power cord with another device if possible.
Some sections of the lights are off.	Loose connection between specific light tubes, faulty light tube.	Check the connections of the non-illuminated sections. If a single tube is faulty, it may need replacement.
Lights are flickering.	Unstable power supply, loose connection.	Ensure the power source is stable. Check all connections for tightness.

If the problem persists after attempting these solutions, please contact customer support for further assistance.

9. WARRANTY AND CUSTOMER SUPPORT

Your FERUERW Hexagon Garage Lights come with a **Limited Warranty**. For specific details regarding the warranty period and coverage, please refer to the warranty card included in your package or contact the seller directly.

For technical support, replacement parts, or any questions not covered in this manual, please contact the seller, **joomshow**, through your purchase platform or their official contact channels.

Please have your product model number (14 Grid) and purchase information ready when contacting support.