

## Manuals+

[Q & A](#) | [Deep Search](#) | [Upload](#)

[manuals.plus](#) /

› [Greenworks](#) /

› [Greenworks 48V \(2x24V\) Electric Lawn Mower Combo Kit: 20" Steel Deck Push Mower, 12" String Trimmer, 320 CFM Blower - Instruction Manual](#)

## Greenworks 1341602-VK

# Greenworks 48V (2x24V) Electric Lawn Mower Combo Kit Instruction Manual

Model: 1341602-VK

---

## 1. INTRODUCTION

This instruction manual provides essential information for the safe and efficient operation, assembly, maintenance, and troubleshooting of your Greenworks 48V (2x24V) Electric Lawn Mower Combo Kit. This kit includes a 20-inch steel deck push mower, a 12-inch string trimmer, and a 320 CFM leaf blower, along with three batteries and two chargers. Please read this manual thoroughly before initial use and retain it for future reference.



Image 1.1: Overview of the Greenworks 48V (2x24V) Electric Lawn Mower Combo Kit, including the mower, string trimmer, leaf blower, batteries, and chargers.

## 2. SAFETY INFORMATION

Always observe basic safety precautions to reduce the risk of fire, electric shock, and personal injury when operating power tools. Familiarize yourself with all controls and proper use of the equipment.

- **Read All Instructions:** Before operating, read and understand all instructions in this manual and on the tools.
- **Wear Appropriate Personal Protective Equipment (PPE):** Always wear safety glasses or goggles, hearing protection, long pants, and sturdy footwear. Gloves are recommended.
- **Keep Area Clear:** Ensure the work area is clear of bystanders, children, and pets. Remove any debris that could be thrown by the tools.
- **Inspect Before Use:** Before each use, inspect the tools for damaged parts, loose fasteners, or any other condition that may affect safe operation.
- **Use Correct Batteries and Chargers:** Only use Greenworks 24V batteries and chargers specified for this product.
- **Avoid Wet Conditions:** Do not operate electric tools in wet grass or rain.

- **Disconnect Power:** Always remove batteries before cleaning, performing maintenance, or when the tool is not in use.
- **Maintain Tools:** Keep cutting tools sharp and clean for best and safest performance.

### 3. PACKAGE CONTENTS

Verify that all items are present and undamaged upon unpacking. If any parts are missing or damaged, do not assemble or operate the tools. Contact Greenworks customer service.

- 20-inch Electric Push Lawn Mower
- 12-inch String Trimmer
- 320 CFM Leaf Blower
- Two (2) 4.0Ah 24V Lithium-Ion Batteries
- One (1) 2.0Ah 24V Lithium-Ion Battery
- Two (2) Battery Chargers
- Mower Grass Collection Bag
- Side Discharge Chute (for mower)
- Trimmer Guard
- Trimmer Auxiliary Handle
- Blower Nozzle
- Operator's Manuals (for each tool)

### 4. SETUP

#### 4.1. Battery Charging

Before first use, fully charge all batteries. The intelligent battery systems ensure cool operation and dynamic charge control.

1. Connect the charger to a standard power outlet.
2. Slide the battery pack onto the charger. Ensure it clicks into place.
3. The charger indicator light will show the charging status. Refer to the charger's specific manual for light indications.
4. Once fully charged, remove the battery from the charger.

**Note:** For optimal performance, especially with the mower, ensure two fully charged 4.0Ah batteries are used. Batteries are designed to withstand temperatures from -15°C to 45°C with active thermal management for safe charging and discharging.

#### 4.2. Lawn Mower Assembly

1. **Handle Assembly:** Unfold the mower handle and secure it in the operating position using the quick-release levers.
2. **Grass Collection Bag:** Assemble the grass collection bag according to its specific instructions. Attach it to the rear discharge opening of the mower.
3. **Side Discharge Chute:** For side discharge operation, lift the side discharge cover and insert the side discharge chute.
4. **Battery Installation:** Open the battery compartment cover. Insert two fully charged 4.0Ah batteries into the battery slots until they click into place. Close the cover securely.



Image 4.2.1: Diagram illustrating key features of the Greenworks 48V mower, including push-button start, turbo button, collapsible handles, brushless motor, LED lights, single-lever height adjustment, and wheel sizes.

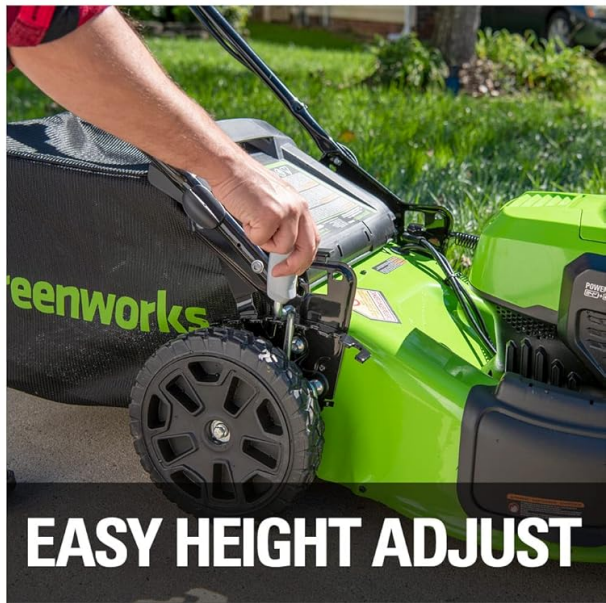
## QUICK FOLD HANDLE



## VERTICAL STORAGE



## TURBO BUTTON



## EASY HEIGHT ADJUST

Image 4.2.2: Visual guide for the mower's quick fold handle, vertical storage capability, turbo button, and easy height adjustment lever.

### 4.3. String Trimmer Assembly

1. **Install Guard:** Attach the trimmer guard to the trimmer head using the provided screws. Ensure it is securely fastened.
2. **Attach Auxiliary Handle:** Slide the auxiliary handle onto the trimmer shaft and adjust it to a comfortable operating position. Tighten the handle securely.
3. **Battery Installation:** Insert a charged 24V battery into the battery port on the trimmer until it locks into place.



Image 4.3.1: Steps for inserting the battery into the string trimmer, locating the lock-out button, and highlighting the auto-feed head and TorqDrive™ system.

#### 4.4. Leaf Blower Assembly

1. **Attach Nozzle:** Slide the blower nozzle onto the blower housing until it clicks or twists into place.
2. **Battery Installation:** Insert a charged 24V battery into the battery port on the blower until it locks into place.



TWO SPEED

RAPID CHARGER

24V 2.0AH USB BATTERY

COMFORT GRIP

ULTRA LIGHTWEIGHT

90 MPH  
320 CFM

Image 4.4.1: Diagram detailing the Greenworks leaf blower's features, including two-speed control, rapid charger compatibility, 2.0Ah USB battery, comfort grip, ultra-lightweight design, and 90 MPH / 320 CFM performance.

## 5. OPERATING INSTRUCTIONS

### 5.1. Lawn Mower Operation

1. **Adjust Cutting Height:** Use the single-lever height adjustment to select one of the 7 positions (1.375"–4") suitable for your lawn.
2. **Starting the Mower:** Press and hold the safety lock-out button, then pull the bail switch lever towards the handle. Release the safety button.
3. **Turbo Mode:** For thicker or wet grass, press the Turbo button on the handle to temporarily boost power by 20%.
4. **Mowing Techniques:** Overlap cutting paths slightly. For best results, mow when grass is dry.
5. **Stopping the Mower:** Release the bail switch lever.



# TURBO BUTTON

## 20% POWER BOOST FOR CUTTING THICK GRASS + LEAF PICK-UP

Image 5.1.1: Close-up of the Turbo button on the mower handle, indicating a 20% power boost for cutting thick grass and leaf pick-up.



## GAS-LIKE PERFORMANCE AT THE TOUCH OF A BUTTON

- REDUCED NOISE
- MINIMAL VIBRATION
- ZERO FUMES

Image 5.1.2: Illustration of the mower's 7-position single-lever height adjustment mechanism.



Image 5.1.3: Overview of the mower's 4-in-1 mowing versatility, including rear bagging, mulching, side discharge, and the turbo button function.

## 5.2. String Trimmer Operation

1. **Starting the Trimmer:** Press the safety lock-out button, then squeeze the trigger switch.
2. **Trimming Techniques:** Use a sweeping motion. Keep the trimmer head parallel to the ground.
3. **Line Feeding:** The trimmer features an auto-feed head, which automatically extends the line as needed during operation.
4. **Stopping the Trimmer:** Release the trigger switch.



Image 5.2.1: Close-up of the trimmer's 0.065" quiet line auto-feed head and 12" cutting path.

## 5.3. Leaf Blower Operation

1. **Starting the Blower:** Squeeze the trigger switch.
2. **Speed Control:** Use the 2-speed switch to select between low speed for light debris and high speed for heavier tasks.
3. **Blowing Techniques:** Use a sweeping motion to move debris. For stubborn debris, use the higher speed setting.
4. **Stopping the Blower:** Release the trigger switch.



Image 5.3.1: Illustration of the blower's performance, highlighting 320 CFM and 90 MPH airflow for clearing dry/wet leaves and debris.



Image 5.3.2: Close-up of the blower's 2-speed control switch, providing versatility for light and heavy-duty tasks.

## 6. MAINTENANCE

Regular maintenance ensures optimal performance and extends the lifespan of your tools. Always remove batteries before performing any maintenance.

- **General Cleaning:** After each use, clean all tools with a dry or slightly damp cloth. Remove grass clippings, dirt, and debris from vents and moving parts.
- **Mower Blade:** Inspect the mower blade regularly for sharpness and damage. A dull blade can tear grass, leading to an unhealthy lawn. Sharpen or replace the blade as needed.
- **Trimmer Line:** Replace the trimmer line when it runs out. Refer to the trimmer's specific manual for instructions on line replacement.
- **Battery Care:** Store batteries in a cool, dry place away from direct sunlight and extreme temperatures. Do not store batteries in a discharged state for extended periods.
- **Storage:** Store all tools in a dry, secure location out of reach of children. The mower features vertical storage, saving up to 70% space.



Image 6.1: The Greenworks mower in its vertical storage position, demonstrating how it saves up to 70% space.

## 7. TROUBLESHOOTING

This section addresses common issues you might encounter. For problems not listed here, contact Greenworks customer support.

Problem	Possible Cause	Solution
Tool does not start	Battery not charged or improperly installed; Safety switch not engaged; Tool malfunction.	Ensure battery is fully charged and correctly inserted. Engage safety switch before pressing trigger/bail. If problem persists, contact support.
Mower cuts unevenly or leaves strips	Dull or damaged blade; Incorrect cutting height; Mowing too fast.	Inspect and sharpen/replace blade. Adjust cutting height. Mow at a slower, consistent pace.
Trimmer line does not advance	Line tangled or empty; Debris in head.	Inspect and clear trimmer head. Replace trimmer line spool if empty.
Blower has low power	Battery low; Nozzle obstructed; Incorrect speed setting.	Charge battery. Clear any obstructions from the nozzle. Select high-speed setting for maximum power.
Short battery run-time	Battery not fully charged; Old battery; Heavy load conditions (e.g., thick grass).	Ensure batteries are fully charged. Consider replacing old batteries. Use Turbo mode only when necessary for mower.

## 8. SPECIFICATIONS

- **Brand:** Greenworks
- **Model Number:** 1341602-VK
- **Power Source:** Battery Powered (48V, 2x24V)
- **Mower Deck Material:** Steel
- **Mower Cutting Width:** 20 Inches
- **Mower Cutting Height Adjustment:** 7-position, 1.38 Inches to 4 Inches

- **Mower Operation Mode:** Manual Push
- **Trimmer Cutting Path:** 12 Inches
- **Blower Airflow:** 320 CFM / 90 MPH
- **Item Weight (Mower):** 48 Pounds
- **Product Dimensions (Mower):** 56"D x 21"W x 45"H
- **Batteries Included:** Two (2) 4.0Ah Lithium-Ion, One (1) 2.0Ah Lithium-Ion
- **Chargers Included:** Two (2)
- **UPC:** 195526049623

## 9. WARRANTY AND SUPPORT

This Greenworks product is backed by a **3-year tool and battery warranty**. This warranty covers defects in materials and workmanship from the date of purchase. Please retain your proof of purchase for warranty claims.

The 24V Greenworks battery platform is designed for versatility, powering over 150 Greenworks 24V products. This ensures long-term reliability and compatibility across your Greenworks tool collection.

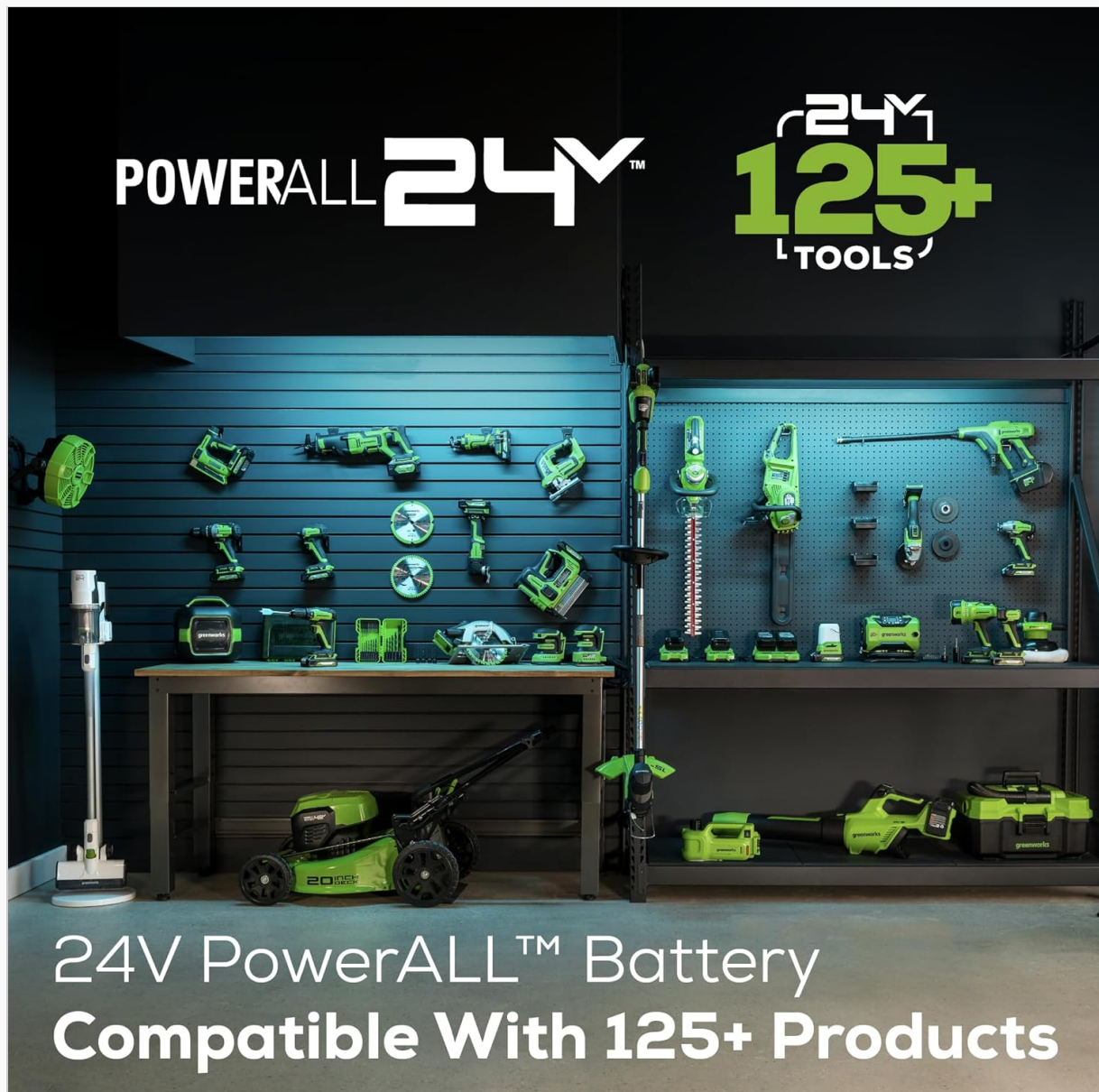


Image 9.1: Illustration of the Greenworks PowerAll 24V battery platform, compatible with over 150 tools.

For technical assistance, warranty service, or to order replacement parts, please contact Greenworks customer support through their official website or the contact information provided with your product packaging.