

Science4you 90001664

Science4you ROMI Intelligent Robot User Manual

Model: 90001664

INTRODUCTION

The Science4you ROMI Intelligent Robot is an interactive toy designed to introduce users to robotics and STEAM principles. This manual provides detailed instructions for setting up, operating, and maintaining your ROMI robot.



Image: The ROMI Intelligent Robot, remote control, and manual, ready for assembly and play.

What's in the Box

- ROMI Intelligent Robot
- Remote Control
- Instruction Manual (this document)

SAFETY INFORMATION

WARNING:

Not recommended for use by children under 6 years of age.

- Always supervise children during play.
- Do not attempt to disassemble or modify the robot or remote control.
- Keep away from water and extreme temperatures.
- Ensure batteries are inserted correctly and dispose of them responsibly.
- Do not mix old and new batteries. Do not mix alkaline, standard (carbon-zinc), or rechargeable (nickel-cadmium) batteries.

SETUP

1. Battery Installation (Robot)

1. Locate the battery compartment on the underside of the ROMI robot.
2. Using a small Phillips head screwdriver, open the battery compartment cover.
3. Insert 3 AA batteries (not included), ensuring correct polarity (+/-).
4. Replace the cover and secure it with the screw.

2. Battery Installation (Remote Control)

1. Locate the battery compartment on the back of the remote control.
2. Using a small Phillips head screwdriver, open the battery compartment cover.
3. Insert 2 AAA batteries (not included), ensuring correct polarity (+/-).
4. Replace the cover and secure it with the screw.

3. Powering On

Switch the power button on the robot to the "ON" position. The robot's LED eyes will light up, indicating it is ready for operation.

OPERATING MODES

The ROMI Intelligent Robot features four interactive modes:

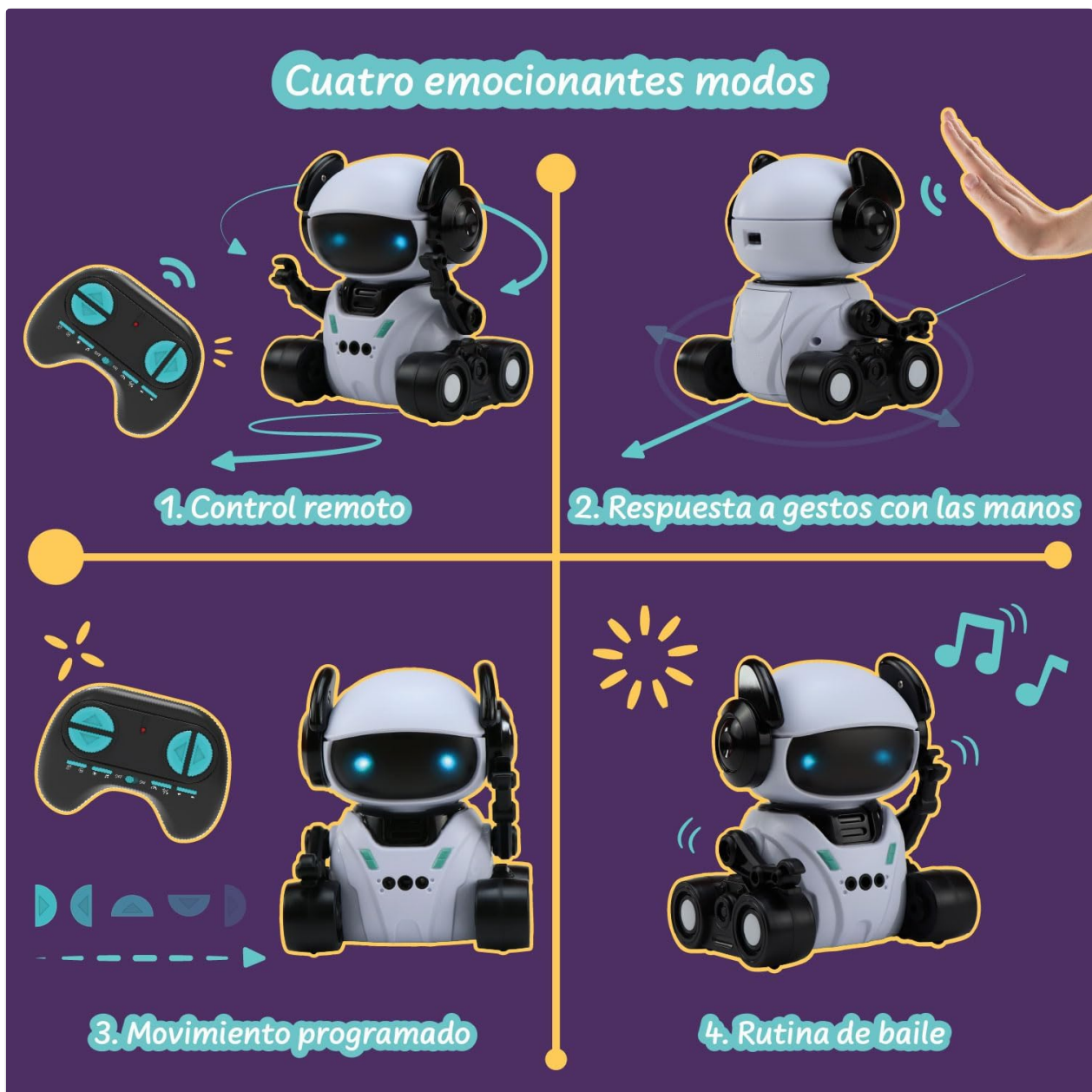


Image: Overview of ROMI's four exciting modes, illustrating the remote control, hand gesture, programming, and dance functions.

1. Remote Control Mode

Use the included remote control to guide ROMI's movements.



Image: A child operating the ROMI robot with the remote control, demonstrating its two speeds and remote functionality.

Controls:

- **Forward/Backward:** Use the directional buttons to move ROMI.
- **Turn Left/Right:** Use the directional buttons to change ROMI's direction.
- **Speed Adjustment:** The remote may have buttons to switch between two speeds.
- **Music/Sound:** Press the music button to play or stop melodies.
- **Eye Color Change:** Some buttons may cycle through LED eye colors.

2. Hand Gesture Response Mode

ROMI can respond to specific hand gestures, allowing for interactive control without the remote.

¡Controla tu robot con gestos de la mano!



Image: A child interacting with the ROMI robot using hand gestures, showing how the robot can be controlled without the remote.

Instructions:

1. Ensure ROMI is in Hand Gesture mode (refer to remote control or robot button for mode selection).
2. Perform gestures within ROMI's sensor range (typically 10-15 cm in front of its head).
3. **Move Forward:** Wave your hand forward.
4. **Move Backward:** Wave your hand backward.
5. **Turn Left/Right:** Swipe your hand to the left or right.

3. Programmed Movement Mode

Program a sequence of movements for ROMI to execute.

¡Programa tu robot para crear divertidas coreografías!



Image: The ROMI robot displaying different eye colors while demonstrating its programmed movement capabilities, allowing users to create custom choreographies.

Instructions:

1. Enter Programmed Movement mode (usually by pressing a dedicated button on the remote).
2. Press the directional buttons on the remote in the desired sequence (e.g., Forward, Turn Left, Forward).
3. Press the "Execute" or "Play" button to make ROMI perform the programmed sequence.
4. ROMI's LED eyes may change color during programming or execution.

4. Dance Routine Mode

ROMI can perform pre-programmed dance routines with music and light effects.

Instructions:

1. Select Dance Routine mode (usually by pressing a dedicated dance button on the remote).
2. ROMI will begin to move, play music, and flash its LED eyes in a synchronized dance.
3. To stop the dance, press the dance button again or switch to another mode.

MAINTENANCE

Cleaning

- Wipe the robot and remote control with a soft, dry cloth.
- Do not use harsh chemicals or abrasive cleaners.
- Avoid getting water into any openings.

Storage

- When not in use for extended periods, remove batteries from both the robot and the remote control.
- Store ROMI in a cool, dry place, away from direct sunlight.

TROUBLESHOOTING

Problem	Possible Cause	Solution
Robot does not turn on.	Batteries are low or incorrectly inserted.	Replace batteries with new ones, ensuring correct polarity. Check power switch is ON.
Remote control does not work.	Remote batteries are low or incorrectly inserted. Robot is out of range.	Replace remote batteries. Ensure robot and remote are within operating range.
Robot does not respond to gestures.	Not in Hand Gesture mode. Hand is too far or too close to the sensor.	Switch to Hand Gesture mode. Perform gestures within 10-15 cm of the robot's head.
Robot moves erratically or slowly.	Low robot batteries. Obstruction in wheels.	Replace robot batteries. Check and clear any obstructions from the wheels.

SPECIFICATIONS

Model Number: 90001664

Brand: Science4you

Dimensions: 17.5 cm (L) x 10 cm (W) x 19.5 cm (H)

Weight: 420 g

Material: Durable, non-toxic ABS Plastic

Recommended Age: 6 years and up

Robot Batteries: 3 AA batteries (not included)

Remote Control Batteries: 2 AAA batteries (not included)



Language: English

WARRANTY AND SUPPORT

For warranty information and customer support, please refer to the product packaging or visit the official Science4you website. Keep your purchase receipt as proof of purchase.

Science4you Official Store: [Visit Science4you Store on Amazon](#)

Related Documents - 90001664

	<p>Dragon Club Digital: Your Guide to the Latest Toys, Games, and Fun Activities</p> <p>Explore the exciting world of toys, games, and creative activities with Dragon Club Digital magazine. Featuring popular brands like Disney, TMNT, Sanrio, DC Comics, and more, plus fun experiments and crafts for kids.</p>
	<p>Ímerchan 2025 Catalogue: Sustainable Corporate Gifts & Promotional Products</p> <p>Explore the Ímerchan 2025 catalogue featuring a vibrant collection of sustainable corporate gifts and promotional products. Discover innovative items for technology, office, travel, and more, all designed with a commitment to the environment and society.</p>