

Manuals+

[Q & A](#) | [Deep Search](#) | [Upload](#)

manuals.plus /

- › [Gyroor](#) /
- › [Gyroor G13 Self Balancing Scooter User Manual](#)

Gyroor G13

Gyroor G13 Self Balancing Scooter User Manual

Model: G13 | Brand: Gyroor

1. INTRODUCTION

This user manual provides essential information for the safe operation, maintenance, and troubleshooting of your Gyroor G13 Self Balancing Scooter. Please read this manual thoroughly before using the product to ensure a safe and enjoyable experience. Retain this manual for future reference.



The Gyroor G13 Self Balancing Scooter, featuring vibrant LED lights and robust off-road tires.

2. SAFETY INFORMATION

Your safety is paramount. The Gyroor G13 Self Balancing Scooter is UL2272 safety certified, ensuring compliance with U.S. safety regulations. Always adhere to the following guidelines:

- Always wear a helmet, knee pads, and elbow pads while riding.
- Ensure the rider's weight does not exceed 176 pounds (80 kg).
- Recommended for users aged 6-12 and adults. Adult supervision is advised for younger riders.
- Avoid riding on public roads, wet surfaces, steep inclines, or uneven terrain that exceeds the scooter's capabilities.
- Do not operate the scooter under the influence of alcohol or drugs.
- Familiarize yourself with local laws and regulations regarding self-balancing scooters.

RIDE SAFELY WITH G13

– SMOOTH RIDING ON ALL TERRAINS.



The Gyroor G13 is UL2272 certified for safety, ensuring a reliable riding experience.

3. PACKAGE CONTENTS

Verify that all items are present in the package:

- Gyroor G13 Self Balancing Scooter
- Charging Adapter

- User Manual (this document)

4. PRODUCT OVERVIEW & FEATURES

The Gyroor G13 is an all-terrain self-balancing scooter equipped with advanced features for performance and user experience.

Key Features:

- **Powerful Motors:** Dual 250W motors provide a total of 500W power, enabling a top speed of 7.75 mph and the ability to climb inclines up to 15 degrees.
- **All-Terrain Tires:** Features non-slip rugged 6.5-inch off-road rubber tires designed for various surfaces including dirt, turf, and gravel.
- **LED Lighting:** Equipped with cool LED lights on the wheels and bright dual LED headlights for enhanced visibility and aesthetic appeal.
- **Bluetooth Speaker:** A built-in high-quality Bluetooth speaker allows for wireless audio streaming from your smartphone or other devices.
- **Long-Lasting Battery:** Powered by a 37V/2Ah lithium-ion battery, offering a travel range of up to 8 miles on a full charge.
- **Self-Balancing System:** An intuitive dynamic inertial stability system makes the scooter easy to learn and control for all ages.

A person wearing dark jeans and tan sneakers is riding a blue hoverboard up a 15-degree incline. The hoverboard has a blue body and black wheels with yellow accents. The background is a blurred city street with a building on the left.

15°

**250W X 2
POWERFUL MOTOR**

The powerful dual 250W motors allow for a 15-degree climbing capability.



Enjoy your favorite music with the integrated Bluetooth speaker.

5. SETUP

Your Gyroor G13 Self Balancing Scooter comes pre-assembled. Before first use, ensure the battery is fully charged.

Initial Steps:

1. Carefully remove the scooter and all accessories from the packaging.
2. Inspect the scooter for any visible damage. Do not use if damaged.
3. Proceed to the Charging section to fully charge the battery before your first ride.

6. CHARGING

To charge your Gyroor G13 Self Balancing Scooter:

1. Locate the charging port on the scooter.
2. Connect the charging adapter to the charging port.
3. Plug the adapter into a standard electrical outlet.
4. The indicator light on the charger will typically turn red during charging and green when fully charged.
5. Charging time is approximately 2-3 hours for a full charge.
6. Disconnect the charger once the battery is full to prevent overcharging.

72WH BATTERY UP 7.75MILES



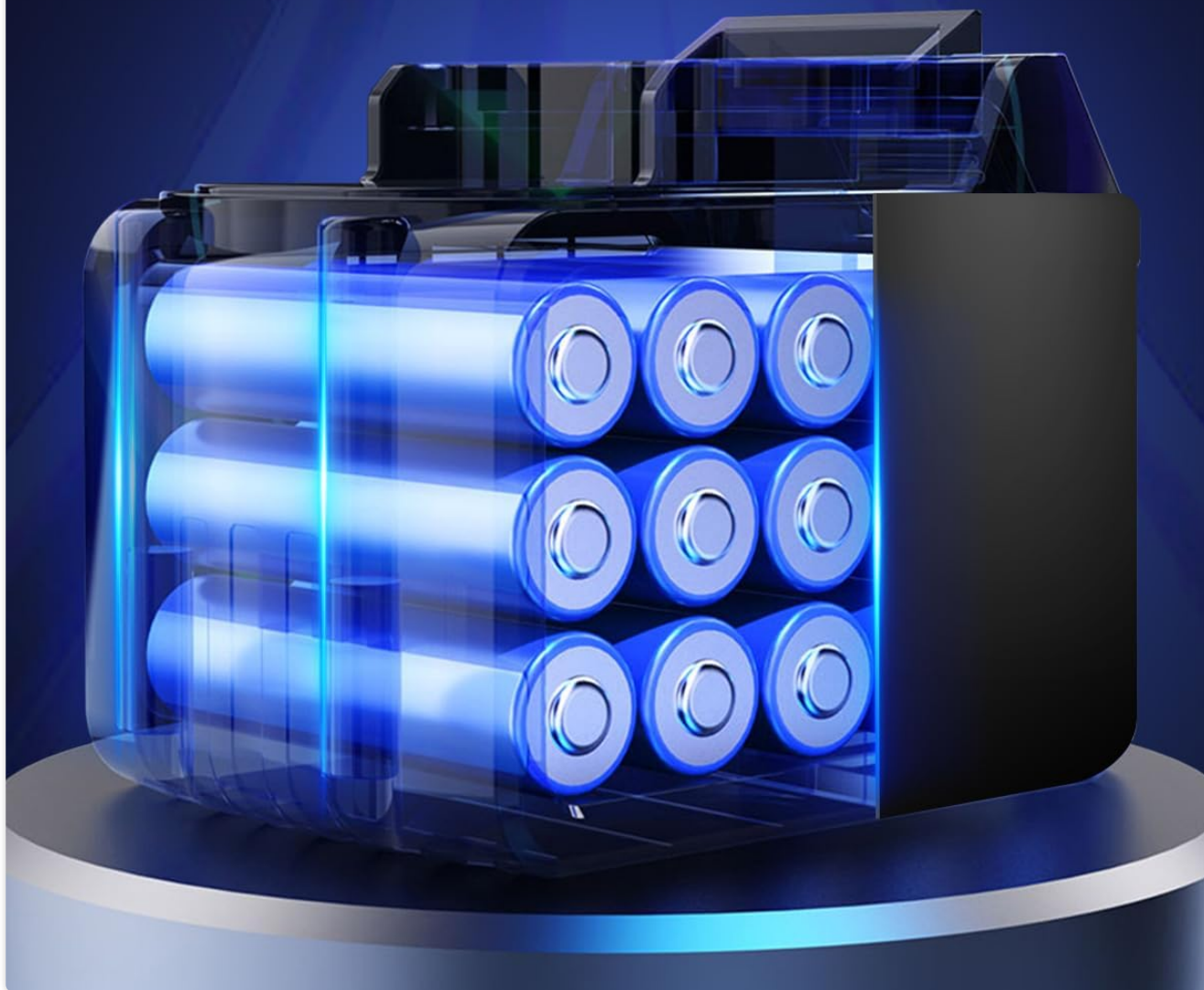
Max Distance



Max Speed



Charging Time



Battery specifications and charging time for the Gyroor G13.

7. OPERATING INSTRUCTIONS

The Gyroor G13 features a self-balancing control system for ease of use. Follow these steps to operate your scooter:

Riding Steps:

1. **Step 1: Mounting**

Lightly place one foot on the board, then slowly step another foot on the other side. Ensure your feet are centered on the footpads.

2. **Step 2: Movement**

Gently lean your body forward to move forward and backward to move backward. The dynamic inertial stability system will assist in maintaining balance.

3. **Step 3: Turning**

To turn, gently lean left or right. Apply slight pressure with the foot on the side you wish to turn towards.



Visual guide for learning to ride the Gyroor G13 Self Balancing Scooter.

Bluetooth Speaker Usage:

To connect your smartphone to the scooter's Bluetooth speaker:

1. Ensure the scooter is powered on.
2. Activate Bluetooth on your smartphone.
3. Search for available devices and select "Gyroor" or a similar name.
4. Once connected, you can play audio through the scooter's speakers.

STEREO BLUETOOTH SPEAKER



The Gyroor G13 features a stereo Bluetooth speaker for an enhanced riding experience.

Official Product Videos:

Your browser does not support the video tag.

This video demonstrates the 8.5-inch off-road hoverboard with Bluetooth and lights, showcasing its features and performance.

Your browser does not support the video tag.

An official video from Gyroor introducing the G13 Self Balancing Scooter for kids and adults, highlighting its design and functionality.

8. MAINTENANCE

Proper maintenance ensures the longevity and optimal performance of your Gyroor G13 Self Balancing Scooter.

Cleaning:

- Wipe the exterior of the scooter with a damp cloth. Avoid using harsh chemicals or abrasive cleaners.
- Do not use water to clean the electrical components directly.

Storage:

- Store the scooter in a cool, dry place away from direct sunlight and extreme temperatures.
- If storing for an extended period, charge the battery to approximately 50% every 3 months to maintain battery health.

Battery Care:

- Use only the original charger provided with the scooter.
- Avoid completely draining the battery before recharging.
- Do not leave the scooter charging unattended for prolonged periods after it is fully charged.

9. TROUBLESHOOTING

If you encounter issues with your Gyroor G13, refer to the following common problems and solutions:

Problem	Possible Cause	Solution
Scooter does not power on	Low battery; Power button not pressed correctly	Charge the battery; Press and hold the power button firmly.
Difficulty balancing or erratic movement	Improper foot placement; Calibration needed; Uneven surface	Ensure feet are centered; Recalibrate the scooter (refer to manufacturer's guide for specific steps); Move to a flat, even surface.
LED lights not working	Loose connection; Software glitch	Check for visible damage; Power cycle the scooter; Contact support if issue persists.
Bluetooth speaker not connecting	Bluetooth off on device; Scooter not in pairing mode; Interference	Ensure Bluetooth is on and discoverable; Power cycle scooter and device; Move closer to the scooter.

For issues not listed above, please refer to the Warranty and Support section.

10. SPECIFICATIONS

Detailed specifications for the Gyroor G13 Self Balancing Scooter:

Feature	Detail
Model Name	G13
Brand	Gyroor
Motor Power	Dual 250W (500W total)
Max Speed	7.75 mph
Max Climbing Angle	15 degrees
Tire Size	6.5 inches (Off-road rubber)
Battery Type	37V/2Ah Lithium-ion
Max Range	Up to 8 miles
Charging Time	2-3 hours
Max Rider Weight	176 pounds (80 kg)
Material	ABS
Item Dimensions (LxWxH)	25 x 8.9 x 9.3 inches
Item Weight	Approximately 6.96 kg (15.3 lbs)
Safety Certification	UL2272


11. WARRANTY AND SUPPORT

Your Gyroor G13 Self Balancing Scooter comes with a limited warranty:

- **Battery:** 6-month warranty
- **Controller:** 1-year warranty






For warranty claims, technical assistance, or further inquiries, please contact Gyroor customer support through their official website or the contact information provided with your purchase documentation.

Related Documents - G13



[Gyroor G13 Hoverboard User Manual - Safety, Operation, and Maintenance Guide](#)

Comprehensive user manual for the Gyroor G13 Hoverboard. Learn about safety guidelines, how to ride, charging, maintenance, specifications, calibration, warranty, and troubleshooting.

	<p>Gyroor G13 Hoverboard User Manual: Safety, Operation, and Maintenance Guide</p> <p>Comprehensive user manual for the Gyroor G13 hoverboard. This guide covers essential safety instructions, how to learn to ride, maintenance procedures, detailed specifications, calibration steps, and answers to frequently asked questions.</p>
	<p>Gyroor G2 Warrior Hoverboard User Manual: Safety, Operation, and Maintenance</p> <p>Comprehensive user manual for the Gyroor G2 Warrior hoverboard, covering essential safety guidelines, riding instructions, maintenance tips, technical specifications, and troubleshooting. Learn how to operate your hoverboard safely and effectively.</p>
	<p>Gyroor G11 Hoverboard User Manual - Safety, Operation, and Specifications</p> <p>Comprehensive user manual for the Gyroor G11 Hoverboard. Learn about riding safety, packing list, charging, first ride, learning to ride, warnings, maintenance, specifications, calibration, app usage, warranty, and FAQs.</p>
	<p>Gyroor Warrior G2 Hoverboard User Manual</p> <p>A comprehensive user manual for the Gyroor Warrior G2 hoverboard. This guide provides detailed information on safe operation, setup, maintenance, specifications, app connectivity, calibration, troubleshooting, and warranty for the Gyroor G2 model (including 2A4L5-G2, 2A4L5G2). Learn how to ride, charge, and maintain your hoverboard for optimal performance.</p>
	<p>Gyroor Hovershoes S300 User Manual: Safety, Operation, and Maintenance Guide</p> <p>Comprehensive user manual for the Gyroor Hovershoes S300, detailing safety guidelines, riding instructions, charging, maintenance, specifications, and warnings from Shenzhen Chitado Technology Co., Ltd.</p>

Documents - Gyroor – G13



[Gyroor G13 Hoverboard User Manual: Safety, Operation, and Maintenance Guide](#)
Comprehensive user manual for the Gyroor G13 hoverboard. This guide covers essential safety instructions, how to learn to ride, maintenance procedures, detailed specifications, calibration steps, and answers to frequently asked questions.
lang:en score:22 filesize: 2.91 M page_count: 12 document date: 2023-07-14



[Gyroor G13 Hoverboard User Manual - Safety, Operation, and Maintenance Guide](#)
Comprehensive user manual for the Gyroor G13 Hoverboard. Learn about safety guidelines, how to ride, charging, maintenance, specifications, calibration, warranty, and troubleshooting.
lang:en score:22 filesize: 4.75 M page_count: 11 document date: 2023-10-30

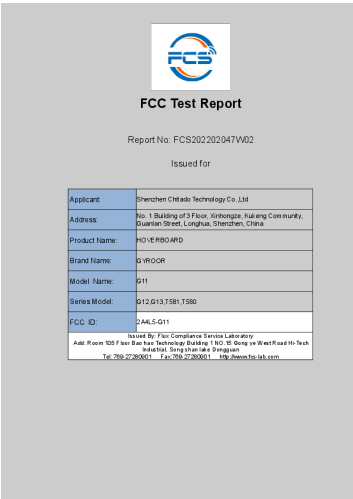


[pdf] Accessories

Seeramreddy Neelima Magic Hover hoverboard G13 with newest lights design The 4 hours ago —
Excellent Performance built in high quality Bluetooth speaker self balance easier control of your
International highest standards 610IGI 7XFL m media amazon images I |||

The Newest Design: Magic Hover hoverboard **G13** with newest lights design. The colorful variable lights of hoverboard pedal and cool LED lights of wheels totally attract the attention of kids. The fashionable **G13** will make rider different and give rider a amazing riding experience. Powerful Motor: Dual...

lang:en score:19 filesize: 93.55 K page_count: 1 document date: 2023-10-05



[pdf] Test Report

Measurement Report Kent Test reports Shenzhen Chitado Technology Co Ltd G11 2A4L5 2A4L5G11 g11
FCC Test Report Report No: FCS202202047W02 Issued for Applicant: Address:
Product Name: Shenzhen Chitado Technology Co.,Ltd No. 1 Building of 3 Floor, Xinhongze, Kukeng Community, Guanlan Street, Longhua, Shenzhen, China
HOVERBOARD Brand Name: GYROOR Model Name: G11 Series Model: G12,**G13**,T58...

lang:en score:14 filesize: 1.97 M page_count: 31 document date: 2022-02-22



Gyroor G13 Hoverboard Certificate of Conformity

Official Certificate of Conformity for the Gyroor G13 hoverboard, confirming compliance with EN 60204-1:2018 and EN ISO12100:2010 standards. Issued by Shenzhen STL Testing Technology Co., Ltd. for Shenzhen Chitado Technology Co., Ltd.

lang:en score:11 filesize: 1.63 M page_count: 1 document date: 2022-04-18