

SBONNI M-P106-4

SBONNI 4 Inch Exhaust Fan User Manual

Model: M-P106-4 | Brand: SBONNI

1. INTRODUCTION

This manual provides detailed instructions for the installation, operation, and maintenance of your SBONNI 4 Inch Exhaust Fan. This fan is designed for efficient two-way ventilation, capable of both exhausting stale air and bringing in fresh air, making it ideal for bathrooms, kitchens, garages, and other household areas. It features quiet operation, a durable brushless DC motor, and convenient wireless remote control.



Image: The SBONNI 4 Inch Exhaust Fan, showcasing its compact design, wireless remote control, and packaging.

2. SAFETY INFORMATION

Please read all safety instructions carefully before installation and operation to prevent injury or damage. Keep this manual for future reference.

- Ensure power is disconnected before installation, cleaning, or maintenance.
- Installation should be performed by a qualified electrician if you are unsure.
- Do not operate the fan with a damaged cord or plug.
- Keep hands and objects away from the fan blades during operation.
- This fan is designed for indoor use in appropriate environments (bathroom, kitchen, garage).
- Do not immerse the fan in water or other liquids.

3. PACKAGE CONTENTS

Verify that all items are present in the package:



Image: Contents of the SBONNI 4 Inch Exhaust Fan package, including the fan unit, remote control, power cord, user manual, screws, and wall plugs.

- SBONNI 4 Inch Exhaust Fan Unit
- Wireless Remote Control
- Power Cord with Plug
- Mounting Screws and Wall Plugs
- User Manual

4. PRODUCT FEATURES

- **Two-Way Ventilation:** Efficiently switches between fresh air intake and stale air exhaust.

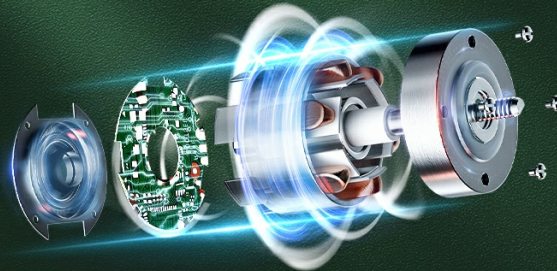


Image: Visual representation of the fan's two-way airflow capability, illustrating fresh air intake and stale air exhaust.

- **Brushless DC Motor:** Features a pure copper brushless DC motor for long lifespan, high efficiency, and low

noise.

Efficient and Durable Pure Copper Brushless Dc Motor



LONG LIFESPAN
> 30,000 Hours Life

HIGH AIRFLOW
> 95m³/h Inflow | > 130m³/h Outflow

HIGH EFFICIENCY
< 0.19 kWh Energy-saving

LOW NOISE
< 28dB Silent Gears | < 32dB Powerful Gears

SUPERIOR DYNAMIC BALANCE
2200rpm + 1350rpm Motor Speed

Image: Detailed diagram highlighting the components of the pure copper brushless DC motor, emphasizing its efficiency and durability.

- **Quiet Operation:** Operates at low noise levels, with silent gear at less than 28dB and powerful gear at less than 32dB.



Two-speed Ventilation Fan



Silent gears
 ≤ 28dB

Powerful gears
 ≤ 32dB

Image: Illustration demonstrating the quiet operation of the fan at different speed settings, indicating noise levels for silent and powerful gears.

- **Wireless Remote Control:** 433MHz wireless remote for convenient control up to 100 meters, featuring

memory function and IPX4 waterproof rating.



Image: Comparison highlighting the advantages of the 433MHz wireless remote control over traditional infrared remotes, including range and features.

- **Durable Materials:** Constructed from PC+ABS material, resistant to wear and tear, withstands high temperatures, and maintains an attractive appearance.



Image: Visual comparison illustrating the superior durability and aesthetic of the PC+ABS material used in the SBONNI exhaust fan compared to older plastic models.

5. INSTALLATION

The SBONNI exhaust fan can be installed in glass windows, ceilings, or walls. Choose the appropriate method for your application. Ensure the installation area has sufficient space and structural integrity to support the fan.

5.1 Glass Window Installation

1. Make a 4-inch (103mm) hole in the glass.
2. Place the gasket around the edge of the glass hole.
3. Insert the unit into the glass window opening. For secure installation, we recommend using glass adhesive.

Glass Window Installation Steps

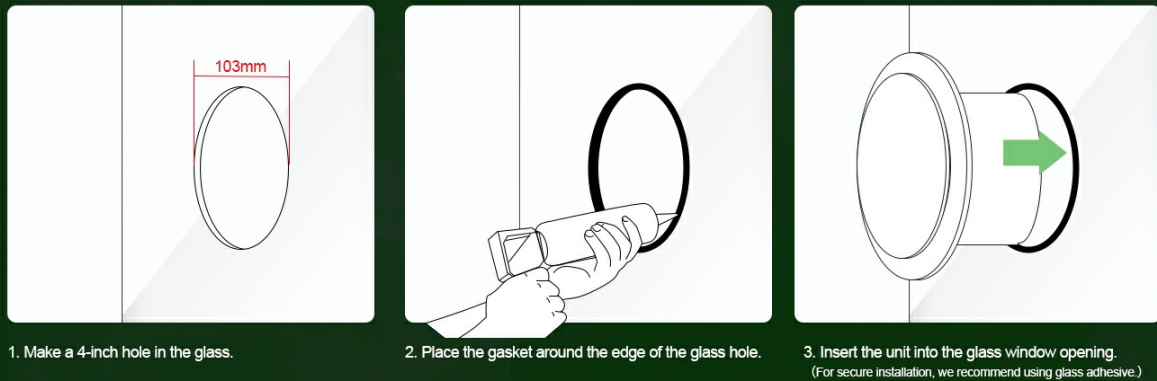


Image: Step-by-step guide for installing the exhaust fan into a glass window, showing hole cutting, gasket placement, and unit insertion.

5.2 Ceiling Installation

1. If your ceiling is made of thin aluminum panels or plasterboard and cannot support the unit's weight, we recommend adding wooden reinforcement.
2. Make a 4-inch (103mm) installation hole in the ceiling.
3. Use screws to securely attach the unit to the ceiling.
4. Connect the flexible duct with a clamp at the bottom and cover with the panel to complete the installation.

Ceiling Installation Steps

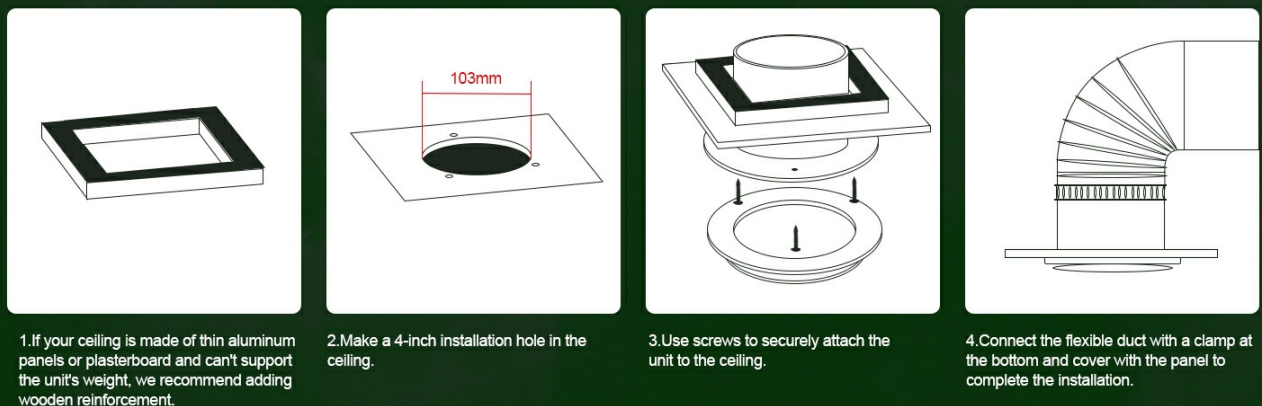


Image: Step-by-step guide for installing the exhaust fan into a ceiling, including considerations for ceiling material, hole cutting, securing the unit, and duct connection.

5.3 Wall-Mount Installation

There are two methods for wall-mount installation:

A. Silicone Adhesive Installation

- A. Make a 4-inch (103mm) hole in the wall.
- B. Insert the unit into the hole and secure it in place with silicone adhesive.

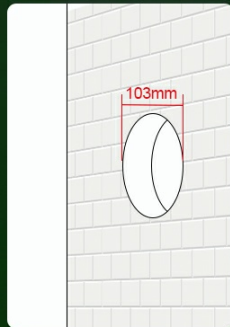
B. Screw Mounting Installation

- A. Gently loosen the screws on the exhaust fan panel to remove it.
- B. Mark the screw positions on the base within the installation hole.

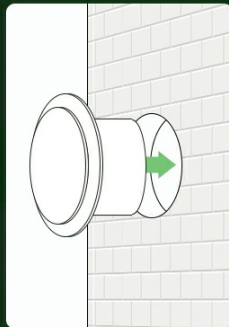
- C. Drill screw holes at the marked spots and insert plastic anchors.
- D. Slide the base into the installation hole, tighten the screws, and reattach the panel to complete the installation.

2 Wall-Mount Installation Methods Steps

A. Silicone Adhesive Installation

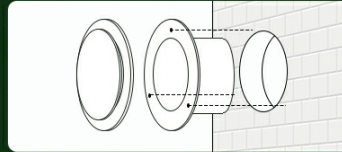


1. Make a 4-inch hole in the wall.

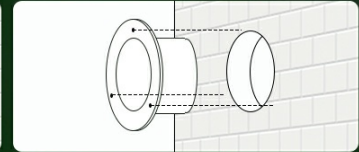


2. Insert the unit into the hole and secure it in place with silicone adhesive.

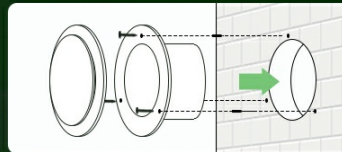
B. Screw Mounting Installation



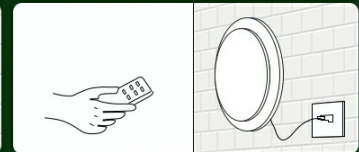
1. Gently loosen the screws on the exhaust fan panel to remove it.



2. Mark the screw positions on the base within the installation hole.



3. Drill screw holes at the marked spots and insert plastic anchors.



4. Slide the base into the installation hole, tighten the screws, and reattach the panel to complete the installation.

Image: Detailed steps for two wall-mount installation methods: using silicone adhesive for a simple fix and screw mounting for a more secure attachment.

6. OPERATING INSTRUCTIONS

The SBONNI exhaust fan is controlled by the included wireless remote. Familiarize yourself with the remote's functions:



Image: Diagram of the wireless remote control, illustrating buttons for power, outflow control (powerful and silent gears), and inflow control (powerful and silent gears).

- **ON/OFF Button:** Press the **ON** button to turn the fan on, and the **OFF** button to turn it off.
- **Outflow Control:**
 - Press the **OUT (Powerful)** button for maximum exhaust (2200 RPM).
 - Press the **OUT (Silent)** button for quieter exhaust (1350 RPM).
- **Inflow Control:**
 - Press the **IN (Powerful)** button for maximum fresh air intake (2200 RPM).

- Press the **IN (Silent)** button for quieter fresh air intake (1350 RPM).
- The remote control has a memory function, retaining the last setting when turned off and on again.

7. MAINTENANCE

Regular maintenance ensures optimal performance and longevity of your exhaust fan.

- **Cleaning:** Disconnect power before cleaning. Wipe the exterior of the fan with a soft, damp cloth. Do not use abrasive cleaners or solvents. For internal cleaning, gently remove the front panel and carefully wipe the fan blades and housing. Ensure all parts are dry before reassembling and reconnecting power.
- **Inspection:** Periodically check the fan for any signs of damage, loose connections, or unusual noises. Ensure the mounting is secure.
- **Filter (if applicable):** This model does not feature a removable filter.

8. TROUBLESHOOTING

If you encounter issues with your SBONNI exhaust fan, refer to the following common problems and solutions:

Problem	Possible Cause	Solution
Fan does not turn on.	No power supply; Remote control battery low; Remote control out of range.	Check power connection and outlet; Replace remote control battery; Ensure remote is within 100m range and not obstructed.
Low airflow or weak suction.	Fan blades are dirty; Obstruction in ducting; Incorrect speed setting.	Clean fan blades; Check for and remove any obstructions; Select a higher speed setting on the remote.
Unusual noise or rattling.	Loose mounting screws; Debris in fan; Damaged fan blade.	Check and tighten all mounting screws; Disconnect power and inspect for debris, carefully remove; If blade is damaged, contact customer support.
Remote control not responding.	Battery depleted; Interference; Remote not paired (unlikely for pre-paired units).	Replace battery; Move away from other wireless devices; If issue persists, contact customer support.

If the problem persists after attempting these solutions, please contact SBONNI customer support.

9. SPECIFICATIONS

Feature	Detail
---------	--------

Feature	Detail
Brand	SBONNI
Model Number	M-P106-4
Product Dimensions	16.51 x 13.46 x 16.51 cm
Item Weight	662 g
Colour	White
Electric Fan Design	Exhaust Fan
Style	Modern
Room Type	Kitchen, Bathroom, Garage
Special Feature	Two-way Exhaust Fan
Mounting Type	Wall Mount, Ceiling Mount, Window Mount
Controller Type	Wireless Remote Control (433MHz)
Number of Speeds	2 (Powerful, Silent)
Number of Blades	5
Airflow (Outflow)	80 CFM (approx. 130 m³/h)
Noise Level	≤28dB (Silent Gear), ≤32dB (Powerful Gear)
Motor Speed	2200 RPM (Powerful), 1350 RPM (Silent)
Lifespan	>30,000 Hours
Energy Saving	<0.19 kWh
Waterproof Rating	IPX4

Certifications

The SBONNI exhaust fan is officially certified, ensuring high quality and trustworthiness.

Officially Certified | High-Quality | Trustworthy



Image: Display of various official certifications, including FCC and UL Listed, confirming the product's quality and compliance.

10. WARRANTY AND SUPPORT

SBONNI is committed to customer satisfaction. We prioritize your experience and offer comprehensive support:

- **Hassle-free returns and replacements:** Contact us if you experience any issues with your product.
- **24/7 Professional Customer Support:** Our dedicated care team is available around the clock to assist you with any questions or concerns.
- For support, please refer to the contact information provided on the product packaging or the official SBONNI website.



Image: A customer support representative, symbolizing SBONNI's commitment to professional and accessible customer service.