



[Manuals.plus](#) /

> [Kidde](#) /

> Kidde Fire Extinguisher 2A10BC User Manual

Kidde KD143-210ABC

Kidde Fire Extinguisher 2A10BC User Manual

Model: KD143-210ABC

INTRODUCTION

This manual provides essential information for the safe and effective use of your Kidde Fire Extinguisher, Model 2A10BC. This extinguisher is designed for residential and living area use, capable of combating common household fires. Please read all instructions carefully before installation and use.

PRODUCT FEATURES

- **Reliable Fire Protection:** Effective against Class A (trash, wood, paper), Class B (flammable liquids and gases), and Class C (electrical equipment) fires.
- **Enhanced Firefighting Power:** Offers 2X more Class A firefighting capability compared to a UL 1-A:10-B:C fire extinguisher.
- **Durable All-Metal Construction:** Features a metal valve assembly, rust-resistant painted steel handle, and aluminum cylinder for impact resistance.
- **Easy-to-Read Pressure Gauge:** Indicates if the extinguisher is charged when the arrow is in the green area.
- **Quick and Powerful Discharge:** Provides a 13-15 second discharge time with a 12-18 feet range and 100 PSI operating pressure.
- **Easy-to-Pull Safety Pin:** Designed for quick access in emergencies.
- **12-Year Service-Free Design:** Designed for long-term reliability (annual external examinations are required per NFPA 10 for single-use extinguishers).
- **UL-Approved Wall Hanger:** Included for convenient mounting and storage.
- **4 lbs. of Fire Extinguishing Agent:** Contains Monoammonium Phosphate dry chemical agent.
- **QR Code Access:** Provides quick access to online registration, warranty, and product information.

SAFETY INFORMATION

Important Warnings:

- Do not break or remove the tamper seal until a fire emergency.
- Never misuse or allow children to play with the fire extinguisher.
- Do NOT test discharge; any discharge will cause pressure loss.

- The dry chemical agent is non-toxic but may cause skin irritation. Refer to the Safety Data Sheet (SDS) for more information.
- This fire extinguisher is for residential, single-use only.
- Always call 911 first in case of a fire.

Place a Kidde fire extinguisher within easy reach and on every level of your home where fires are more likely to start, such as the kitchen, garage, and living areas. Ensure all occupants know its location and how to use it.

LIVING AREA FIRE EXTINGUISHER



**SINGLE-USE
OPERATION**

2X

**MORE
FIREFIGHTING
POWER***



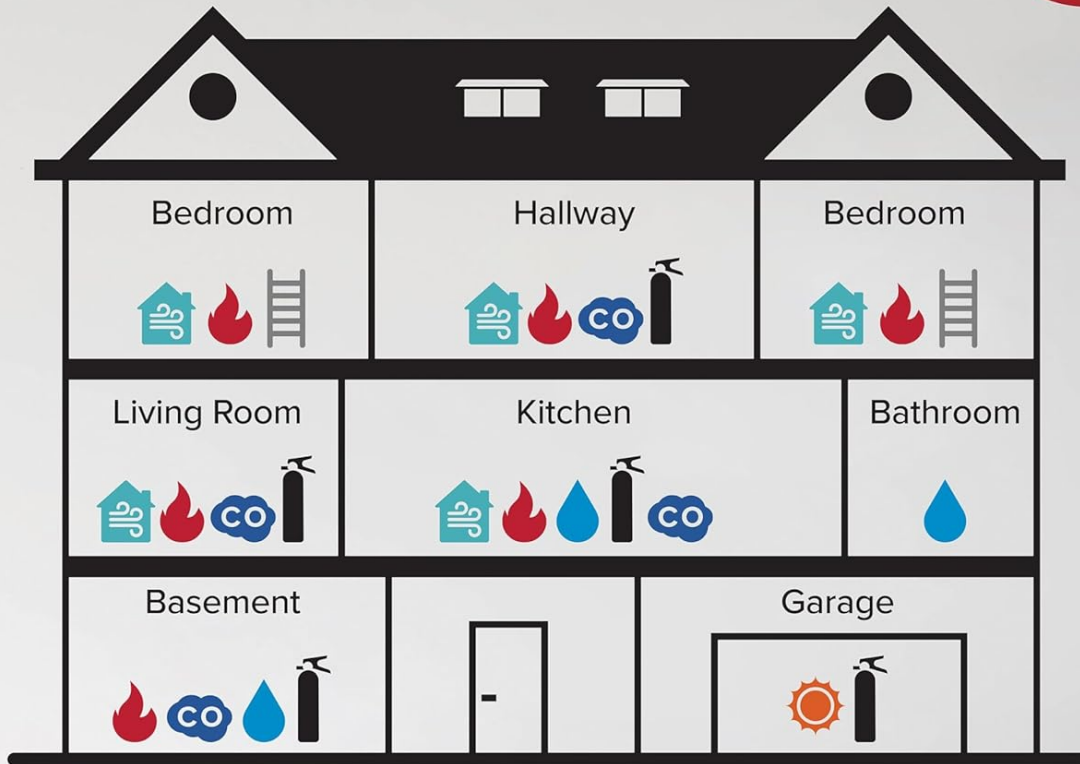
**EASY ONLINE
REGISTRATION**







**6-YEAR LIMITED
WARRANTY**

*When compared to the Class A firefighting capability for a UL 1-A-10-B-C rated fire extinguisher.
*Per NFPA 10, single-use fire extinguishers do not require 6-year internal examinations.
Annual external examinations and corrective actions are required.

Image: Types of fires the Kidde 2A10BC extinguisher is effective against: Class A (common combustibles like trash, wood, paper), Class B (flammable liquids and gases), and Class C (energized electrical equipment).



-  **Smoke Alarm**
-  **Indoor Air Quality Monitor**
-  **Fire Extinguisher**
-  **Escape Ladder**
-  **Carbon Monoxide Alarm**
-  **Water Leak + Freeze Detector**
-  **Heat Alarm**

NOTE: Do not place alarms within 6 ft of appliances. These are general recommendations only, as every home is different. See specific User Guides (Smoke, CO, Ladder, etc.) for more detailed location information.

Image: Home Safety Product Placement Guide illustrating ideal locations for fire extinguishers, smoke alarms, carbon monoxide alarms, water leak detectors, and heat alarms throughout a typical home.

SETUP AND INSTALLATION

Your Kidde Fire Extinguisher comes with a UL-approved plastic wall hanger for easy mounting. Choose an easily accessible location, such as near an exit or in a high-risk area like the kitchen or garage. Ensure the extinguisher is mounted securely and is visible to all occupants.



WALL HANGER INCLUDED



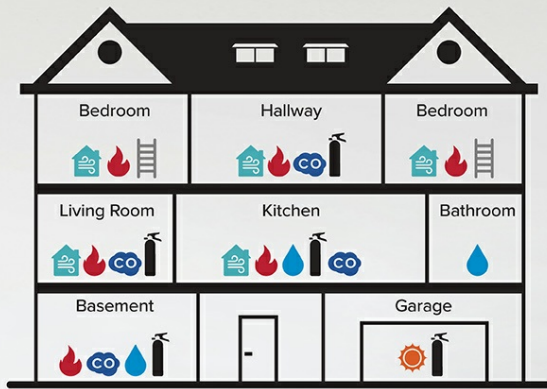
Image: A red Kidde fire extinguisher securely mounted on a wall using the included wall hanger, positioned in a living area near a fireplace.

OPERATING INSTRUCTIONS (P.A.S.S. METHOD)

In the event of a small, contained fire, follow the P.A.S.S. method for effective operation:

1. **P - Pull:** Pull the pin located at the top of the extinguisher. This breaks the tamper seal.
2. **A - Aim:** Aim the nozzle at the base of the fire, standing 12-18 feet away depending on your comfort level and the extinguisher's reach.
3. **S - Squeeze:** Squeeze the operating lever slowly and evenly to discharge the extinguishing agent.
4. **S - Sweep:** Sweep the nozzle from side to side at the base of the fire until the fire is completely extinguished. Watch the area in case of re-ignition.

Home Safety Product Placement Guide



NOTE: Do not place alarms within 6 ft of appliances. These are general recommendations only, as every home is different. See specific User Guides (Smoke, CO, Ladder, etc.) for more detailed location information.

Image: Visual guide demonstrating the P.A.S.S. (Pull, Aim, Squeeze, Sweep) method for operating a fire extinguisher. Your browser does not support the video tag.

Video: Official Kidde video demonstrating how to properly use a fire extinguisher, following the P.A.S.S. method.

MAINTENANCE AND INSPECTION

Regular inspection ensures your fire extinguisher is ready for use:

- **Monthly Inspection:** Check the pressure gauge monthly. The arrow should be in the green area, indicating it is fully charged.
- **Physical Check:** Ensure the safety pin is intact and the tamper seal is not broken. Check for any signs of physical damage, corrosion, or leakage.
- **Hose and Nozzle:** Verify that the hose and nozzle are clear of obstructions.
- **Manufacture Date:** Check the base of the cylinder for the manufacture year.

PRESSURE INDICATOR

Fully charged when arrow is pointed in the green area.



Image: The pressure indicator showing the arrow in the green zone, signifying a fully charged extinguisher.

12-YEAR SERVICE-FREE DESIGN*



**Check base
of cylinder for
manufacture year.**

**Per NFPA 10, single-use fire extinguishers do not require 6-year internal examinations. Annual external examinations and corrective actions are required. Product may vary.*

Image: The base of the fire extinguisher cylinder, where the manufacture year is stamped, indicating its age and service life.

SPECIFICATIONS

Manufacturer	Kidde
Model Number	KD143-210ABC
Item Weight	4 pounds (agent weight) / 7.1 pounds (total weight)
Product Dimensions	4.5 x 4.5 x 14.3 inches
Color	Red
Material	Aluminum, Monoammonium Phosphate
Fire Class Rating	2-A:10-B:C

Discharge Time	13-15 seconds
Discharge Range	12-18 feet
Operating Pressure	100 PSI
Certifications	UL Listed
Included Components	Fire Extinguisher, Wall Hanger



**Total weight may vary*

Image: Visual representation of the fire extinguisher's dimensions (14.3 inches height, 6.8 inches width) and weight (4 lbs agent weight, 7.1 lbs total weight).

WARRANTY AND SUPPORT

Your Kidde Fire Extinguisher is backed by a **6-year limited manufacturer's warranty**. For warranty claims, product

registration, or additional support, please scan the QR code on the product label or visit the official Kidde website. Keep your purchase receipt as proof of purchase.



Image: A Kidde fire extinguisher displayed in a home setting, highlighting the 6-year limited warranty.

IMPORTANT DISPOSAL INFORMATION

This fire extinguisher is designed for residential, single-use only. It must be disposed of and replaced if it has been used, discharged, or if it is over 12 years old. Consult your local fire department or waste management facility for proper disposal procedures in your area.