

Manuals+

[Q & A](#) | [Deep Search](#) | [Upload](#)

Manuals.plus /

› [Corioliss](#) /

› Corioliss Trimmer 265 User Manual

Corioliss TRIMMER 265

Corioliss Trimmer 265 User Manual

Model: TRIMMER 265

INTRODUCTION

The Corioliss Trimmer 265 is a professional-grade, rechargeable, and cordless trimmer designed for precise hair and beard grooming. Featuring stainless steel blades, a high-performance motor, and a long-lasting lithium-ion battery, this device offers an ergonomic and portable solution for both personal and professional use. Please read this manual thoroughly before first use to ensure safe and effective operation.



Image: The Corioliss Trimmer 265 shown with its charging cable, cleaning brush, oil, and four guide combs.

PACKAGE CONTENTS

Please check the box for the following items:

- Corioliss Trimmer 265 Unit
- Charging Cable
- 4 Guide Combs (1.5mm, 3mm, 4.5mm, 6mm)
- Cleaning Brush
- Lubricating Oil
- User Manual

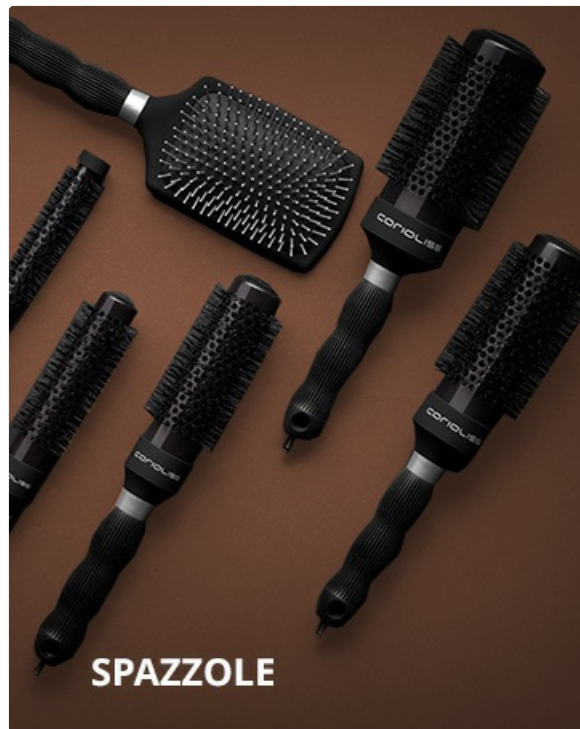


Image: Close-up view of the four included guide combs, labeled 1.5mm, 3mm, 4.5mm, and 6mm.

SAFETY INSTRUCTIONS

To reduce the risk of electric shock, burns, fire, or injury:

- Do not reach for an appliance that has fallen into water. Unplug immediately.
- Do not use while bathing or in a shower.
- Do not place or store appliance where it can fall or be pulled into a tub or sink.
- Always unplug this appliance from the electrical outlet immediately after using.
- Unplug this appliance before cleaning.
- Close supervision is necessary when this appliance is used by, on, or near children or invalids.
- Use this appliance only for its intended household use as described in this manual.
- Never operate this appliance if it has a damaged cord or plug, if it is not working properly, or if it has been dropped or damaged.
- Keep the cord away from heated surfaces.
- Never drop or insert any object into any opening.
- Do not use outdoors or operate where aerosol (spray) products are being used or where oxygen is being administered.
- Always attach plug to appliance first, then to outlet. To disconnect, turn all controls to OFF, then remove plug from outlet.

SETUP

Charging the Device

Before first use, fully charge the trimmer for approximately 3 hours. The device features a lithium battery with no memory effect, allowing for flexible charging. A full charge provides up to 5 hours of continuous use.

1. Connect the charging cable to the trimmer's charging port.

2. Plug the other end of the cable into a suitable power outlet.
3. The charging indicator light will illuminate during charging and change color or turn off when fully charged.



Image: Diagram illustrating the Corioliss Trimmer 265's 3-hour charging time and 5-hour usage time, highlighting its lithium battery and dual voltage capability.

Attaching Guide Combs

Select the desired guide comb (1.5mm, 3mm, 4.5mm, or 6mm) based on the hair length you wish to achieve. Align the comb with the trimmer blade and push it firmly until it clicks into place.

OPERATING INSTRUCTIONS

Powering On/Off

The Corioliss Trimmer 265 features a tactile touch start system. Simply press the power button to turn the device on or off.

Trimming Techniques

For best results, ensure hair is clean and dry. Hold the trimmer with the blade flat against the skin or at a slight angle, depending on the desired cut. Move the trimmer against the direction of hair growth for an even trim. Use the smaller guide combs for shorter styles and detailing, and the larger combs for longer lengths.



Image: A man demonstrating the use of the Corioliss Trimmer 265 for precise hair definition.

Professional Blade

The trimmer is equipped with a professional stainless steel blade, designed for precision and durability. This blade is suitable for professional hairdressing, barber shops, and beauty salons, ensuring a clean and sharp cut.



Image: A detailed view of the professional stainless steel blade of the Corioliss Trimmer 265.

MAINTENANCE

Cleaning the Blades

After each use, turn off the trimmer and remove any attached guide comb. Use the provided cleaning brush to remove loose hairs from the blades. For a more thorough cleaning, the blade can be carefully detached and rinsed under running water. Ensure the blade is completely dry before reattaching.

Lubrication

Regular lubrication of the blades is essential for optimal performance and longevity. After cleaning, apply a small drop of the provided lubricating oil to the teeth of the blade. Turn the trimmer on for a few seconds to allow the oil to distribute evenly.

TROUBLESHOOTING

Problem	Possible Cause	Solution
Trimmer does not turn on.	Battery is depleted.	Charge the trimmer fully.
Trimmer runs slowly or pulls hair.	Blades are dirty or not lubricated.	Clean and lubricate the blades.
Trimmer makes unusual noise.	Foreign object caught in blades or internal issue.	Turn off and inspect blades for obstructions. If problem persists, contact customer support.

SPECIFICATIONS

- **Model:** TRIMMER 265
- **Brand:** Corioliss
- **Blade Material:** Stainless Steel
- **Power Source:** Battery Powered (Lithium-ion)
- **Charging Time:** Approximately 3 hours
- **Usage Time:** Up to 5 hours
- **Special Features:** Ergonomic, Portable, Tactile Touch Start System
- **Color:** Metallic Silver
- **Dimensions:** 23.7 x 20.2 x 6.7 cm (Package)
- **Weight:** 590 grams (Package)

WARRANTY AND SUPPORT

This Corioliss product is covered by a manufacturer's warranty. For specific warranty terms and conditions, please refer to the warranty card included in your product packaging or visit the official Corioliss website. If you encounter any issues or require technical assistance, please contact Corioliss customer support through their official channels.

