

SGIN SGIN-T10P

SGIN 10 Inch Android 12 Tablet User Manual

Model: SGIN-T10P



This image displays the SGIN 10 Inch Android 12 Tablet, highlighting its design and key memory specifications.

1. INTRODUCTION

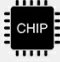
This manual provides comprehensive instructions for the SGIN 10 Inch Android 12 Tablet, Model SGIN-T10P. It covers essential information regarding setup, operation, maintenance, and troubleshooting to ensure optimal use of your device. Please read this manual thoroughly before using your tablet.


2. PRODUCT OVERVIEW


Familiarize yourself with the physical components and ports of your SGIN tablet.


Super large capacity, super high speed operation

SGIN T10 PRO is powered by a super fast and responsive processor. 8GB RAM + 128ROM, providing you with ultra-smooth and lag-free gaming experience.

**Mediated
MTK8183**

**8GB
RAM**

**128GB / 256GB
ROM** / External TF card



This diagram illustrates the location of all buttons, ports, and cameras on the SGIN tablet.

- **Front Camera (5MP):** Located on the top bezel when held horizontally, used for video calls and selfies.
- **Rear Camera (8MP) with Flash:** Located on the back panel, used for taking photos and videos.
- **Volume Buttons:** Adjust the device's audio output.
- **Power Button:** Turns the tablet on/off or puts it to sleep/wakes it up.
- **Headphone Jack:** Standard 3.5mm port for audio output.
- **USB-C Port:** Used for charging the tablet and connecting to a computer for data transfer.
- **TF Card Slot:** For inserting a Micro SD card to expand storage capacity.
- **Microphone:** For audio input during calls or recordings.
- **Stereo Speakers:** Provide audio output for media and notifications.

3. SETUP

3.1 Initial Charging

Before first use, fully charge your tablet. Connect the provided USB-C cable to the tablet's USB-C port and the other end to a power adapter. Plug the adapter into a wall outlet. The battery indicator on the screen will show charging status.

3.2 Powering On/Off

- **To Power On:** Press and hold the Power button until the SGIN logo appears.
- **To Power Off:** Press and hold the Power button until a menu appears, then select 'Power off'.
- **To Restart:** Press and hold the Power button until a menu appears, then select 'Restart'.

3.3 Initial Setup Wizard

Upon first power-on, the tablet will guide you through the initial setup process. This includes:

1. Selecting your language.
2. Connecting to a Wi-Fi network.
3. Setting up your Google account (optional, but recommended for app downloads).

4. Setting up screen lock (PIN, pattern, or password).

4. OPERATING INSTRUCTIONS

4.1 Android 12 Operating System

Your tablet runs on the Android 12 operating system, offering enhanced privacy features, intuitive controls, and a personalized user experience.

Pre installed Android 12 operating system



Android 12
Protect Your Privacy



Privacy
Security & Device Controls



This image highlights the pre-installed Android 12 operating system with its focus on privacy and device controls.

4.2 Basic Navigation

- **Touch Gestures:** Tap to select, swipe to scroll, pinch to zoom.
- **Home Screen:** Access your apps and widgets. Swipe left/right to navigate between screens.
- **Notification Panel:** Swipe down from the top of the screen to view notifications and quick settings.

4.3 Connectivity

Your tablet supports Wi-Fi, Bluetooth, and GPS for various connectivity needs.

- **Wi-Fi:** Go to Settings > Network & internet > Wi-Fi. Turn Wi-Fi on and select your desired network. Enter the password if prompted. The tablet supports both 2.4GHz and 5GHz Wi-Fi bands.
- **Bluetooth:** Go to Settings > Connected devices > Connection preferences > Bluetooth. Turn Bluetooth on, then select 'Pair new device' to connect to headphones, speakers, or other Bluetooth accessories.
- **GPS:** Location services are enabled by default. You can manage location settings under Settings > Location.

4.4 Camera Usage

Capture photos and videos using the tablet's front and rear cameras.



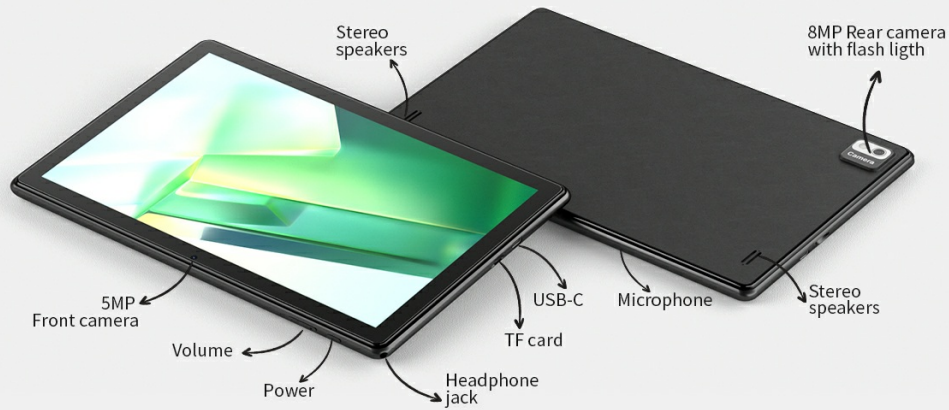
This image illustrates the tablet's 5MP front and 8MP rear cameras, showcasing their capabilities for capturing moments.

1. Open the 'Camera' app from your home screen or app drawer.
2. Tap the camera switch icon to toggle between the 5MP front camera and the 8MP rear camera.
3. Select photo or video mode.
4. Tap the shutter button to take a picture or start/stop recording a video.

4.5 Storage Management

Your tablet comes with 128GB of internal storage, expandable up to 256GB using a TF (Micro SD) card.

Buttons & Connectors



This image details the tablet's storage capabilities, including 8GB RAM, 128GB ROM, and support for 256GB external TF card expansion.

- **Inserting a TF Card:** Locate the TF card slot on the side of the tablet. Gently insert the Micro SD card until it clicks into place.
- **Managing Storage:** Go to Settings > Storage to view storage usage and manage files.

4.6 Battery Management

The tablet is equipped with a 6000mAh battery, providing extended usage times.

6000MAH Long-life Battery



8 Hours
Video



12 Hours
Music



10 Hours
Browsing



480 Hours
Standby



This image highlights the 6000mAh battery and its estimated performance for various activities.

- **Charging:** Use the provided USB-C cable and power adapter.
- **Battery Optimization:** To extend battery life, reduce screen brightness, disable unused connectivity features (Wi-Fi, Bluetooth, GPS), and close background apps.

4.7 Display Settings

The 10.1-inch FHD IPS display offers a clear and vibrant viewing experience (1920x1200 resolution).



This image showcases the tablet's 10.1-inch FHD IPS display with 1920x1200 resolution, providing an excellent viewing experience.

- **Brightness:** Adjust screen brightness in the Quick Settings panel or under Settings > Display.
- **Eye Comfort Shield:** Enable this feature in Display settings to reduce blue light emission for comfortable viewing, especially in low light.

5. MAINTENANCE

Proper care ensures the longevity and performance of your tablet.

- **Cleaning:** Use a soft, lint-free cloth to clean the screen and body. Avoid abrasive materials or harsh chemicals.
- **Software Updates:** Regularly check for and install system updates to ensure optimal performance and security. Go to Settings > System > System update.
- **Safe Handling:** Avoid dropping the tablet or exposing it to extreme temperatures, direct sunlight, or moisture.

6. TROUBLESHOOTING

This section addresses common issues you might encounter with your SGIN tablet.

- **Tablet Not Turning On:** Ensure the tablet is sufficiently charged. Connect it to the charger for at least 30 minutes, then try pressing and holding the Power button for 10-15 seconds.
- **Screen Freezing or Unresponsive:** Press and hold the Power button for approximately 10 seconds to force a restart.
- **Wi-Fi Connection Issues:**
 - Ensure Wi-Fi is enabled in settings.
 - Restart your Wi-Fi router.
 - Forget the network in tablet settings and reconnect.
 - If experiencing issues with 5GHz networks, try connecting to a 2.4GHz network if available, as some routers or tablet configurations may have specific compatibility requirements.
- **Charging Problems:**
 - Verify the USB-C cable and adapter are securely connected and undamaged.

- Try a different compatible USB-C cable and power adapter.
- Ensure the charging port is clean and free of debris.
- **Tablet Not Waking Up from Sleep:** If the tablet becomes unresponsive after entering sleep mode, perform a hard restart by holding the Power button for about 10 seconds.

7. SPECIFICATIONS

Key technical specifications for the SGIN 10 Inch Android 12 Tablet (Model SGIN-T10P).

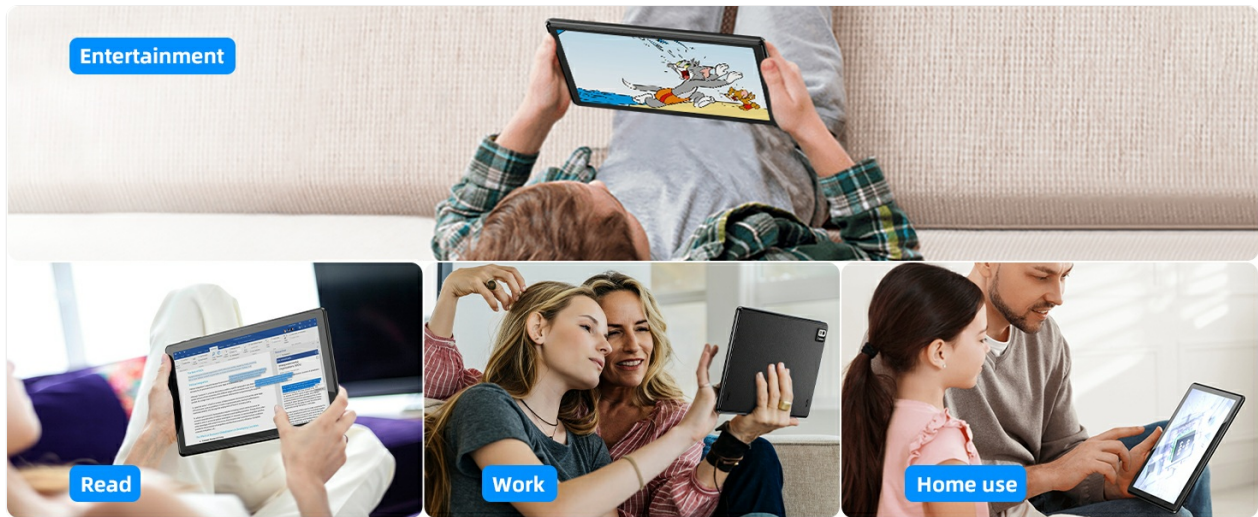
Feature	Specification
Model	SGIN-T10P
Operating System	Android 12
Display Size	10.1 Inches
Screen Resolution	1920 x 1200 FHD IPS
Processor	MediaTek Octa-Core 2.0Ghz (MTK8183)
RAM	8 GB DDR4 SDRAM
Internal Storage	128 GB
Expandable Storage	Up to 256GB via TF Card
Rear Camera	8 MP with Flash
Front Camera	5 MP
Battery Capacity	6000mAh
Connectivity	Wi-Fi (2.4G + 5G Dual), Bluetooth 5.0, GPS
Ports	USB-C, 3.5mm Headphone Jack, TF Card Slot
Dimensions (LxWxH)	10.1 x 6 x 0.4 inches
Weight	1.72 pounds

8. WARRANTY AND SUPPORT

SGIN provides 1 year of maintenance for this product from the date of purchase. If you encounter any problems with your SGIN tablet, please contact customer support for assistance. Refer to your purchase documentation for specific contact details.

9. GENERAL USAGE SCENARIOS

The SGIN tablet is designed for a variety of uses, including entertainment, reading, work, and general home use.



This image illustrates various ways the SGIN tablet can be used, from entertainment to productivity.