

AENO AGH0003S-US

AENO Infrared Heater User Manual

Model: AGH0003S-US

IMPORTANT SAFETY INFORMATION

Please read this manual carefully before using the AENO Infrared Heater. Keep these instructions for future reference. Failure to follow these instructions may result in electric shock, fire, or serious injury.

- Always ensure the heater is placed on a stable, level surface or securely mounted to a wall.
- Do not cover the heater or block its air inlets/outlets. Overheating may occur.
- Keep flammable materials (furniture, curtains, paper, clothing, etc.) at least 3 feet (0.9 meters) from the front, sides, and rear of the heater.
- Do not use the heater in bathrooms, laundry areas, or similar indoor locations where it may come into contact with water.
- Unplug the heater when not in use.
- Do not operate any heater with a damaged cord or plug, or after the heater malfunctions or has been dropped or damaged in any manner.
- This heater is hot when in use. To avoid burns, do not let bare skin touch hot surfaces.
- Close supervision is necessary when any appliance is used by or near children or invalids.

PRODUCT OVERVIEW

The AENO Infrared Heater is a smart, energy-efficient heating solution designed for indoor use. It offers both freestanding and wall-mount installation options, controlled via an intuitive mobile application or directly on the device.

Key Features:

- **Easy Installation:** Can be used as a freestanding floor heater with included legs or mounted on a wall with brackets. No extra tools are required for bracket installation.
- **User-Friendly App Control:** Connects via WiFi to the AENO App for remote operation, timer settings, and integration with other AENO smart home devices.
- **Fast-Warming & Healthy Infrared Heat:** Provides rapid heating without drying out the air, burning oxygen, or releasing harmful chemicals, ensuring a safe environment.

- **Slim, Space-Saving Design:** Its elegant, ultra-thin glass panel design (0.44"D) blends seamlessly into any interior and can be installed vertically or horizontally.
- **Energy Efficient:** Designed to save up to 50% energy by providing even heat distribution. Allows temperature adjustment from 140°F to 248°F and electricity consumption monitoring.
- **Silent Operation:** Operates at 0 dB, ensuring a quiet heating experience.



Figure 1: AENO Infrared Heater showing its sleek design, integrated digital display, and control via the AENO smartphone application.

Invisible design



Innovative & infrared heating



Energy saving up to 50%



700+ Watts



Made in Poland



Adjustable panel temperature from 60 to 120°C



Strong and thin tempered 11 mm glass



LED Display and control buttons



reddot winner 2023



reddot winner 2023
smart product



Figure 2: The AENO Infrared Heater's invisible design, highlighting its aesthetic integration into various room settings and its recognition as a Reddot Winner 2023.

PACKAGE CONTENTS

Verify that all items are present and in good condition upon unpacking.

- AENO Premium Eco Smart Heater (1 pc)
- Mounting brackets (2 pcs)
- Mounting kit (screws and anchors)
- Legs (2 pcs)
- Quick Start Guide
- Mounting stencil

Easy unpacking

Easy assembly

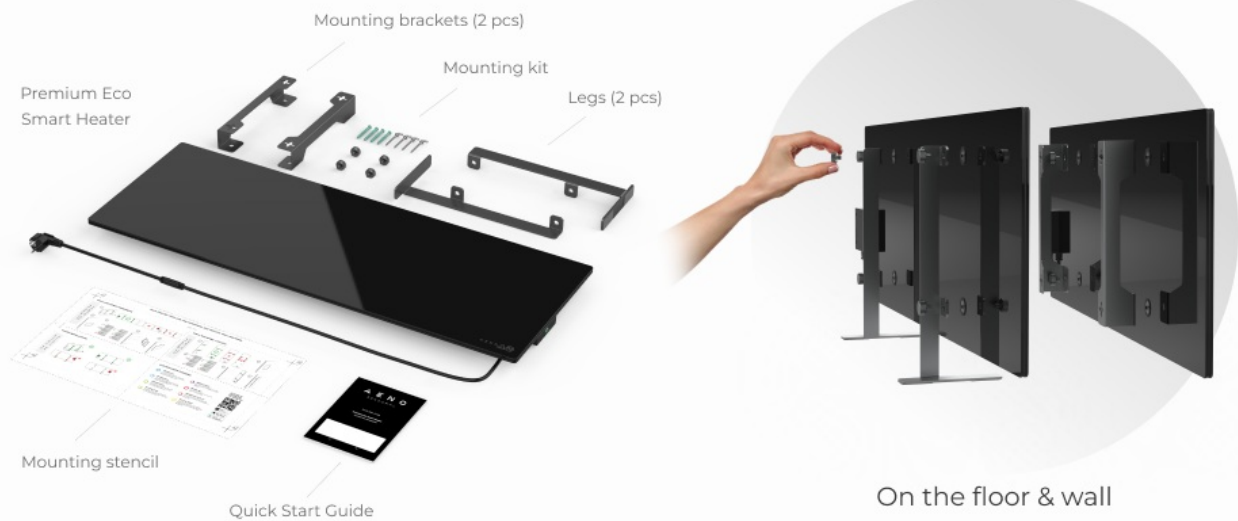


Figure 3: Contents of the AENO Infrared Heater package, including the heater unit, mounting brackets, legs, and quick start guide, along with a visual representation of assembly.

SETUP AND INSTALLATION

Freestanding Installation:

1. Carefully unbox the heater and all components.
2. Attach the two provided legs to the bottom of the heater. Ensure they are securely fastened.
3. Place the heater on a flat, stable surface, ensuring adequate clearance from walls and flammable objects (minimum 3 feet).

Wall Mount Installation:

1. Choose a suitable wall location, ensuring it is a solid surface capable of supporting the heater's weight (19.6 lbs). Maintain minimum 3 feet clearance from flammable materials.
2. Use the mounting stencil to mark the drilling points on the wall.
3. Drill holes and insert wall anchors if necessary, according to your wall type.
4. Secure the mounting brackets to the wall using the provided screws. Ensure they are level and firmly attached.
5. Carefully hang the heater onto the mounted brackets. The design allows for easy attachment by hand, without requiring additional tools.
6. Ensure the heater is securely seated on the brackets before plugging it in.

Elegant ultra-thin glass panel design

Perfect fits in any interior

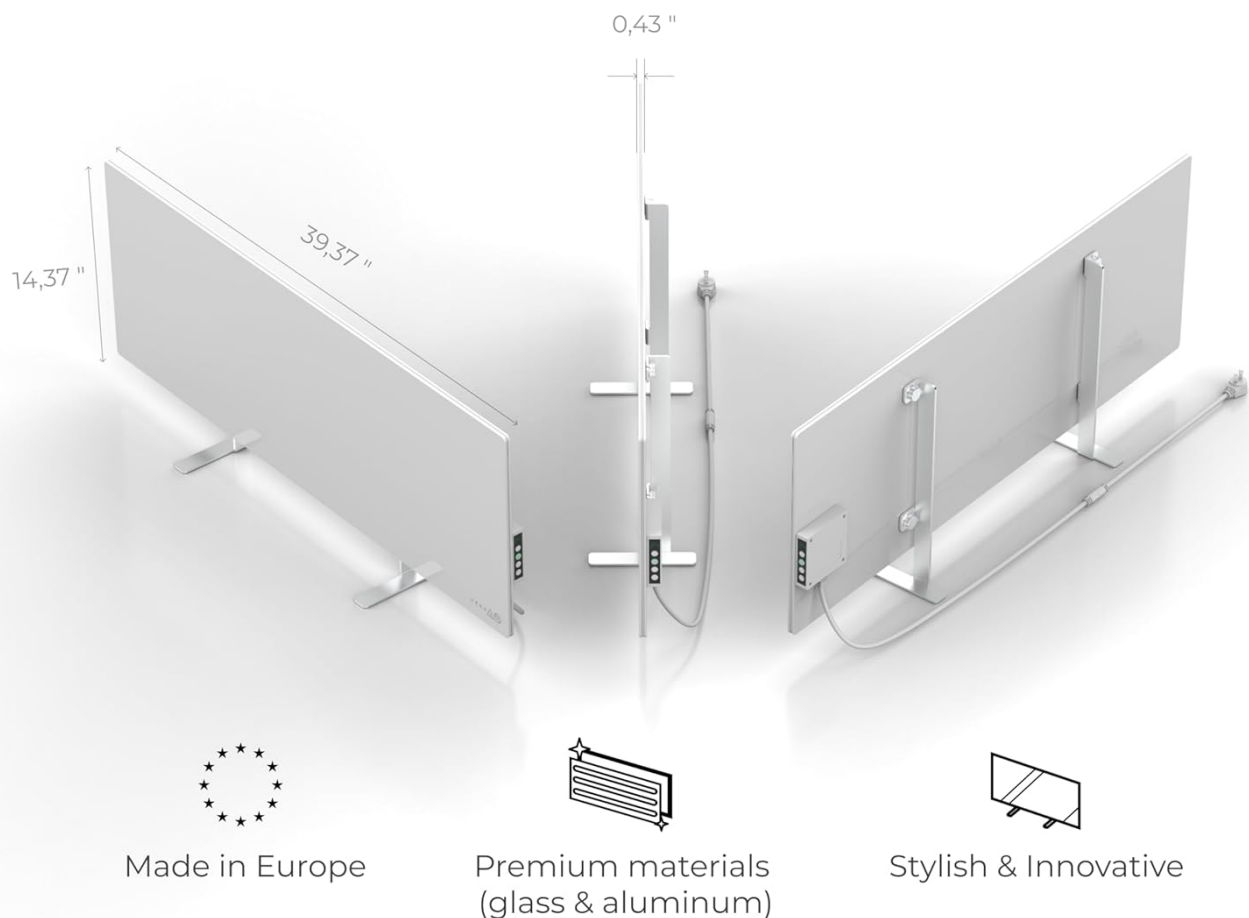
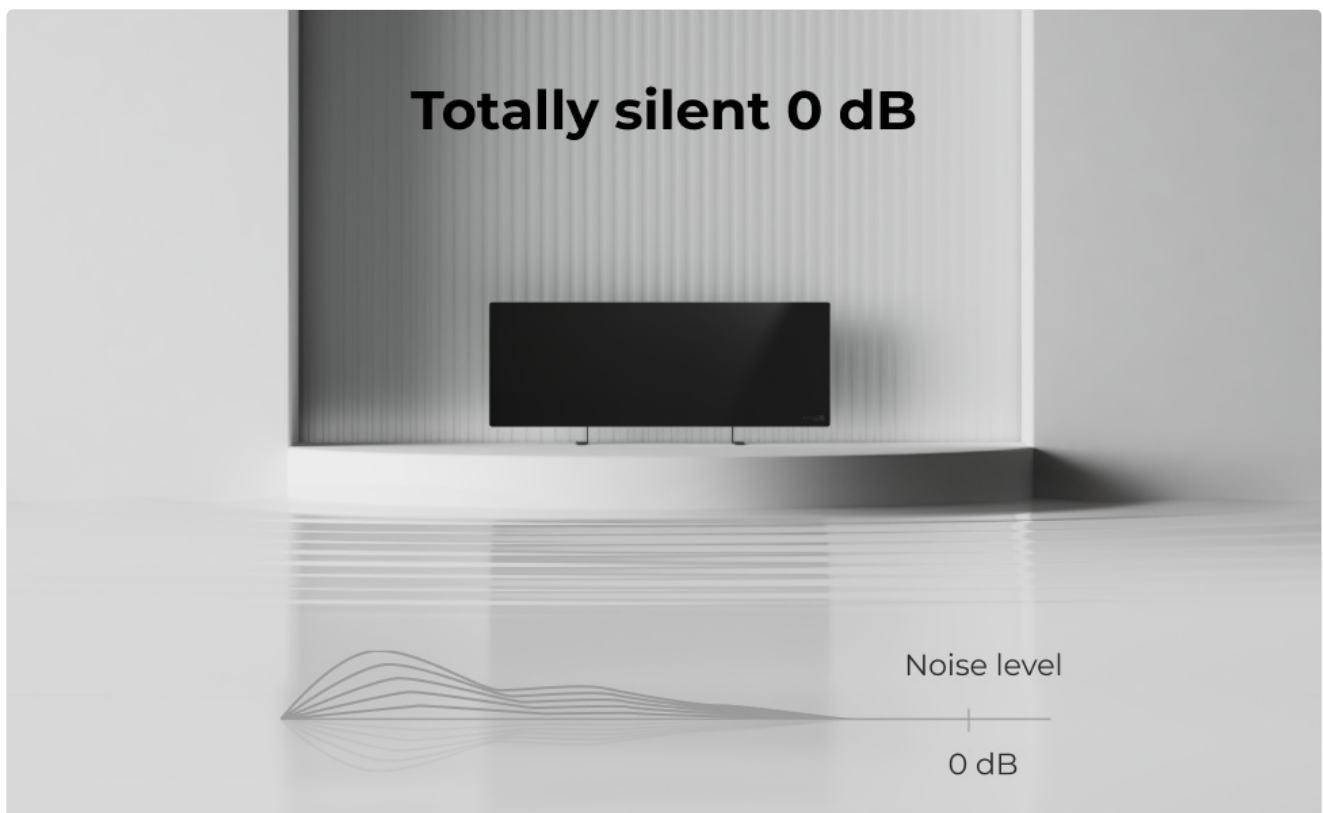


Figure 4: Detailed dimensions of the AENO Infrared Heater, illustrating its ultra-thin profile and how it integrates into various spaces.



OPERATING INSTRUCTIONS

Manual Control (On-Device):

The heater features an LED display and control buttons on its side for direct operation.

- **Power Button:** Press to turn the heater ON or OFF.
- **Temperature Setting:** Use the up and down buttons to adjust the target room temperature. The LED display shows the current and set temperature.
- **Smart Mode:** Activate or deactivate Smart Mode via its dedicated button for optimized energy saving.

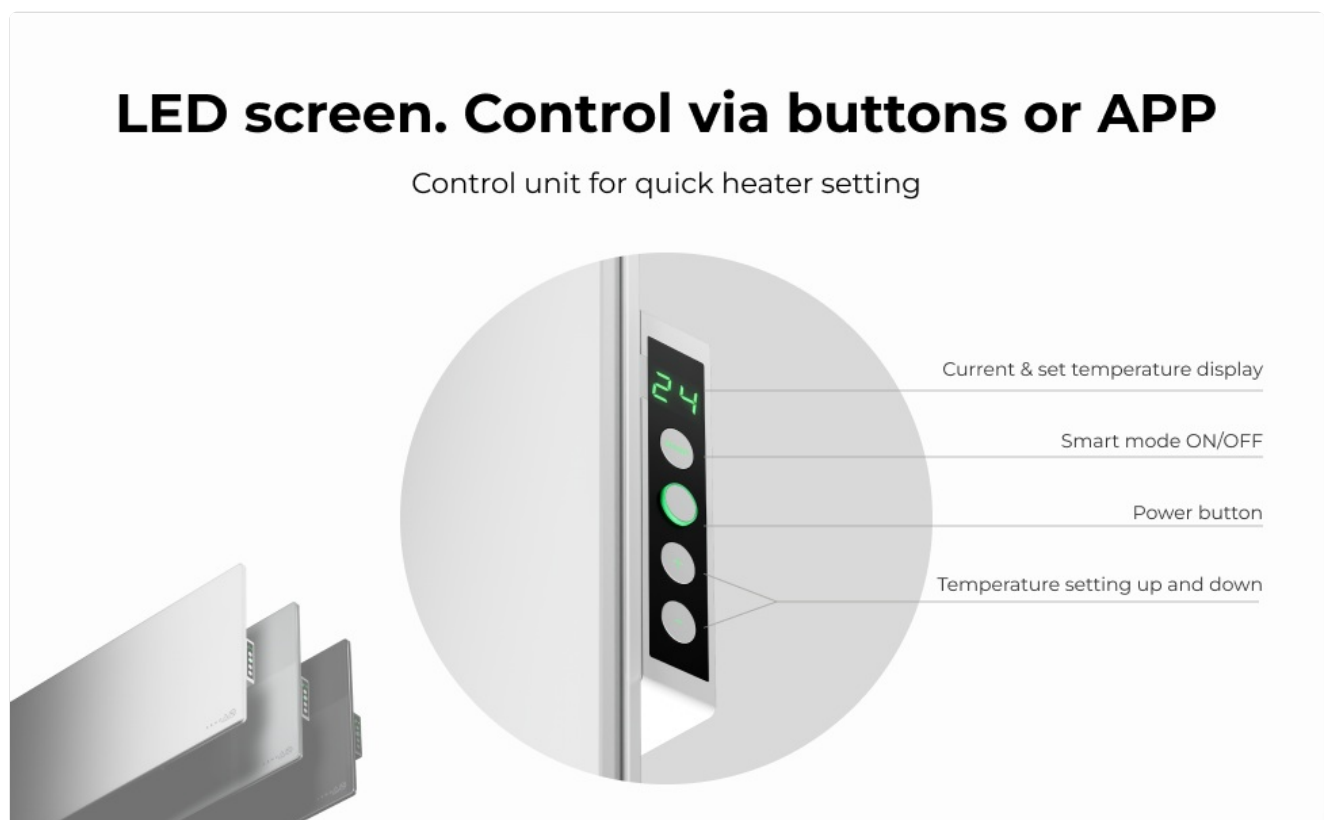


Figure 6: The LED screen and control buttons on the side of the AENO Infrared Heater, allowing for quick adjustments of temperature and operating modes.

App Control (AENO App):

For enhanced control and smart features, download the AENO App from the Google Play Store or Apple App Store.

1. **Download the App:** Search for "AENO" in your device's app store.
2. **Connect via WiFi:** Follow the in-app instructions to connect your heater to your home WiFi network.
3. **Remote ON/OFF:** Control the heater from anywhere.
4. **Set Temperature:** Adjust the desired room temperature remotely.
5. **Heating Scheduler:** Create custom schedules for automatic operation.
6. **Energy Consumption Monitoring:** Track electricity usage to manage costs.
7. **Multi-Heater Scenarios:** Control multiple AENO heaters simultaneously.

Operate from any place in the world

Heating square for 1 device is up to 215 sq.ft.



Remote on/off one
or many heaters



Adjustable panel
temperature 140-248°F



Monitor & analyze
electricity
consumption

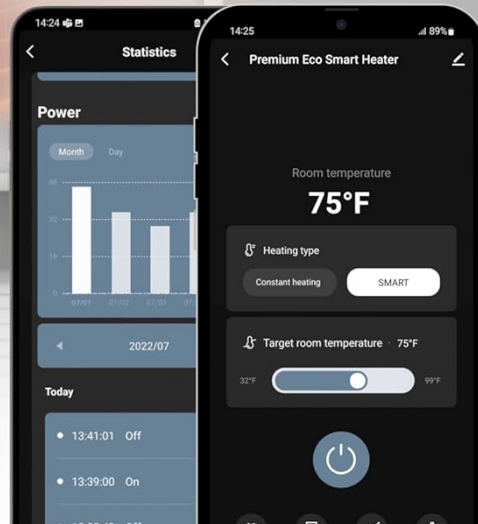


Figure 7: The AENO smartphone application interface, demonstrating remote control capabilities, temperature settings, and energy monitoring features for the heater.

Remote control via user-friendly AENO App

Control the heater from the mobile app wherever you are:

- switch on/off
- set the temperature in the room
- create a heating scheduler
- make scenarios with multiple on/off heaters
- control of energy consumption
- setup devices from AENO ecosystems



Figure 8: The user-friendly AENO App, illustrating its features for remote control, scheduling, and energy consumption management of the heater.

Understanding Infrared Heating:

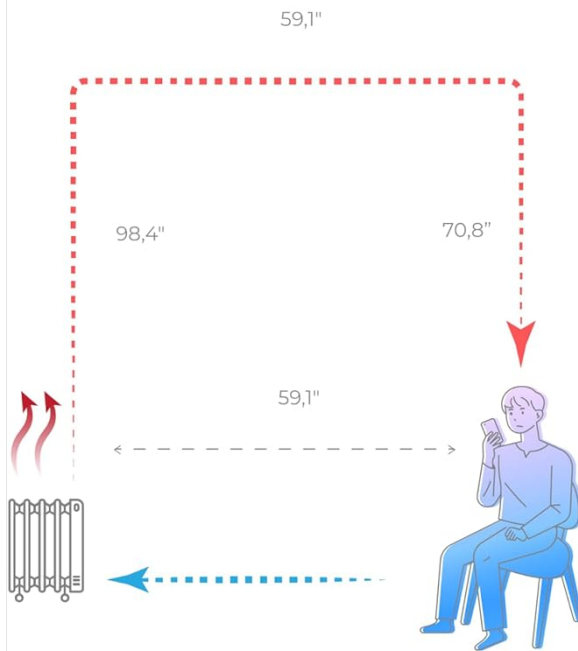
Unlike traditional convection heaters that warm the air, the AENO Infrared Heater directly warms objects and people in the room, similar to sunlight. This method provides efficient and comfortable heat, reducing energy waste.

HEATING BY CONVECTION



Total distance = 228,3"

Time heating = 58 min



INFRARED AENO HEATING



Total distance = 59,1"

Time heating = **15 min**

Heating up to 215 sq.ft

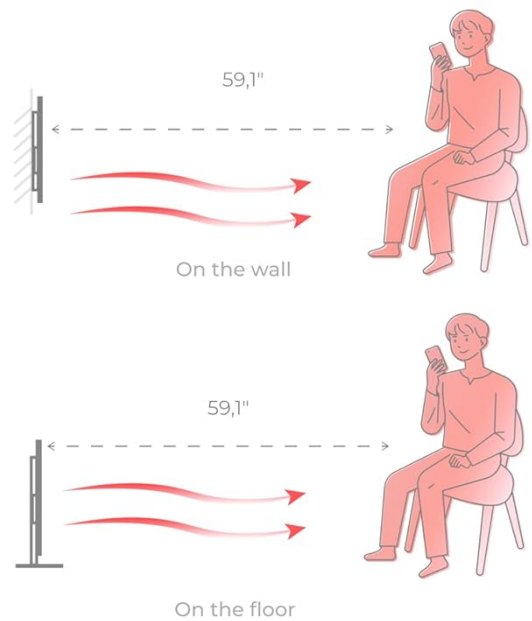


Figure 9: A comparison illustrating the difference between traditional convection heating and AENO's infrared heating, highlighting the efficiency and direct warming effect of infrared technology.

Heating for your well-being



Odourless
and silent



No air blowing,
no pollution



Does not dry air &
does not burn oxygen



Figure 10: The AENO Infrared Heater emphasizing its health benefits, such as being odorless, silent, not blowing air, and not drying the air or burning oxygen.

Proper Square for optimal heating is up to 215 sq. ft

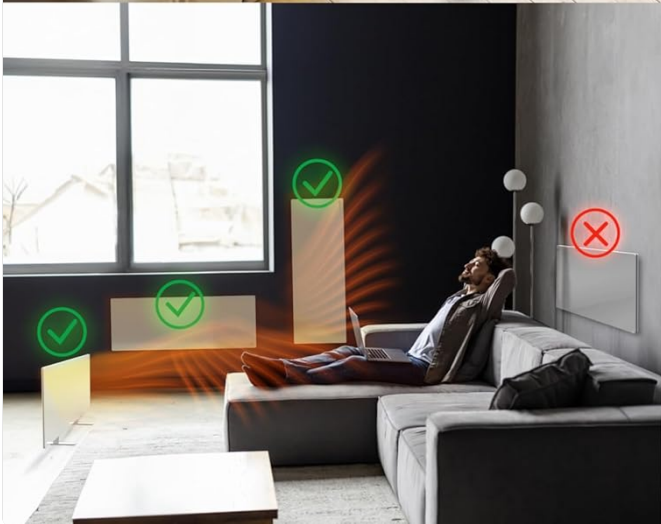


Figure 11: Visual guide for optimal placement of the AENO Infrared Heater to achieve effective heating coverage up to 215 sq. ft., showing both correct and incorrect setups.



Figure 12: The AENO Infrared Heater demonstrating its ability to reduce heating costs by up to 50% through efficient spot heating, providing warmth where needed.

Official Product Video:

Your browser does not support the video tag.

Video 1: An official product video from AENO showcasing the LED Intelligent Infrared Heater, highlighting its design and features as a Reddot Winner 2023.

MAINTENANCE

Regular maintenance ensures optimal performance and longevity of your heater.

- **Cleaning:** Always unplug the heater and allow it to cool completely before cleaning. Use a soft, damp cloth to wipe the exterior surfaces. Do not use abrasive cleaners or solvents.
- **Storage:** If storing the heater for an extended period, keep it in a cool, dry place, preferably in its original packaging.
- **Inspection:** Periodically check the power cord and plug for any signs of damage. If damage is found, do not use the heater and contact customer support.

TROUBLESHOOTING

| Problem | Possible Cause | Solution |
|---------|----------------|----------|
|---------|----------------|----------|

| Problem | Possible Cause | Solution |
|---------------------------------|--|---|
| Heater does not turn on. | Not plugged in; power outlet malfunction; power switch off; circuit breaker tripped. | Ensure plug is fully inserted. Test outlet with another device. Turn power switch ON. Reset circuit breaker. |
| Heater not heating effectively. | Room too large for coverage; heater placed incorrectly; target temperature too low. | Ensure room size is within 215 sq. ft. Refer to optimal placement guidelines (Figure 11). Increase target temperature. |
| App cannot connect to heater. | Incorrect WiFi password; heater too far from router; WiFi network issues. | Verify WiFi password. Move heater closer to router. Restart router and heater. Ensure 2.4GHz WiFi network is used. |
| Unusual noises or smells. | Dust accumulation; internal malfunction. | Unplug and clean the heater. If problem persists, discontinue use and contact customer support. |

SPECIFICATIONS

| Feature | Detail |
|-------------------------|--|
| Brand | AENO |
| Model Number | AGH0003S-US |
| Special Feature | App, Manual control, Remote control, Programmable, On/off timer, Energy saving |
| Color | White |
| Form Factor | Wall Mount, Floor Mount |
| Indoor/Outdoor Usage | Indoor |
| Product Dimensions | 0.44"D x 14.38"W x 39.4"H |
| Recommended Uses | Home |
| Room Type | Room, kitchen, living room |
| Heating Coverage | up to 215 sq. ft. |
| Burner Type | Infrared |
| Fuel Type | Electric |
| Voltage | 120 Volts (AC) |
| Amperage | 5.83 Amps |
| Max Temperature Setting | 248 Degrees Fahrenheit |
| Item Weight | 19.6 pounds |
| Country of Origin | Poland |
| Date First Available | July 5, 2023 |

WARRANTY AND SUPPORT

For warranty information and technical support, please refer to the official AENO website or contact their customer service directly. Keep your purchase receipt as proof of purchase.

Note: Specific warranty terms and support contact details may vary by region and are subject to change.

