

Montech MK105FY

Montech MKey Mechanical Gaming Keyboard User Manual

Model: MK105FY

1. INTRODUCTION

This manual provides detailed instructions for the Montech MKey Mechanical Gaming Keyboard, Model MK105FY. It covers setup, operation, customization, maintenance, and troubleshooting to ensure optimal performance and user experience. The Montech MKey keyboard features Gateron G Yellow Pro 2.0 pre-lubed switches, premium MDA profile PBT keycaps, customizable RGB LED lighting, and a hot-swappable design.



Image 1.1: Montech MKey Mechanical Gaming Keyboard with included accessories.

2. PACKAGE CONTENTS

Verify that all items are present in the package:

- Montech MKey Mechanical Gaming Keyboard (Model: MK105FY)
- USB Type-C Cable
- Keycap Puller
- Switch Puller
- Additional Themed Keycaps (Osaka Castle Theme)

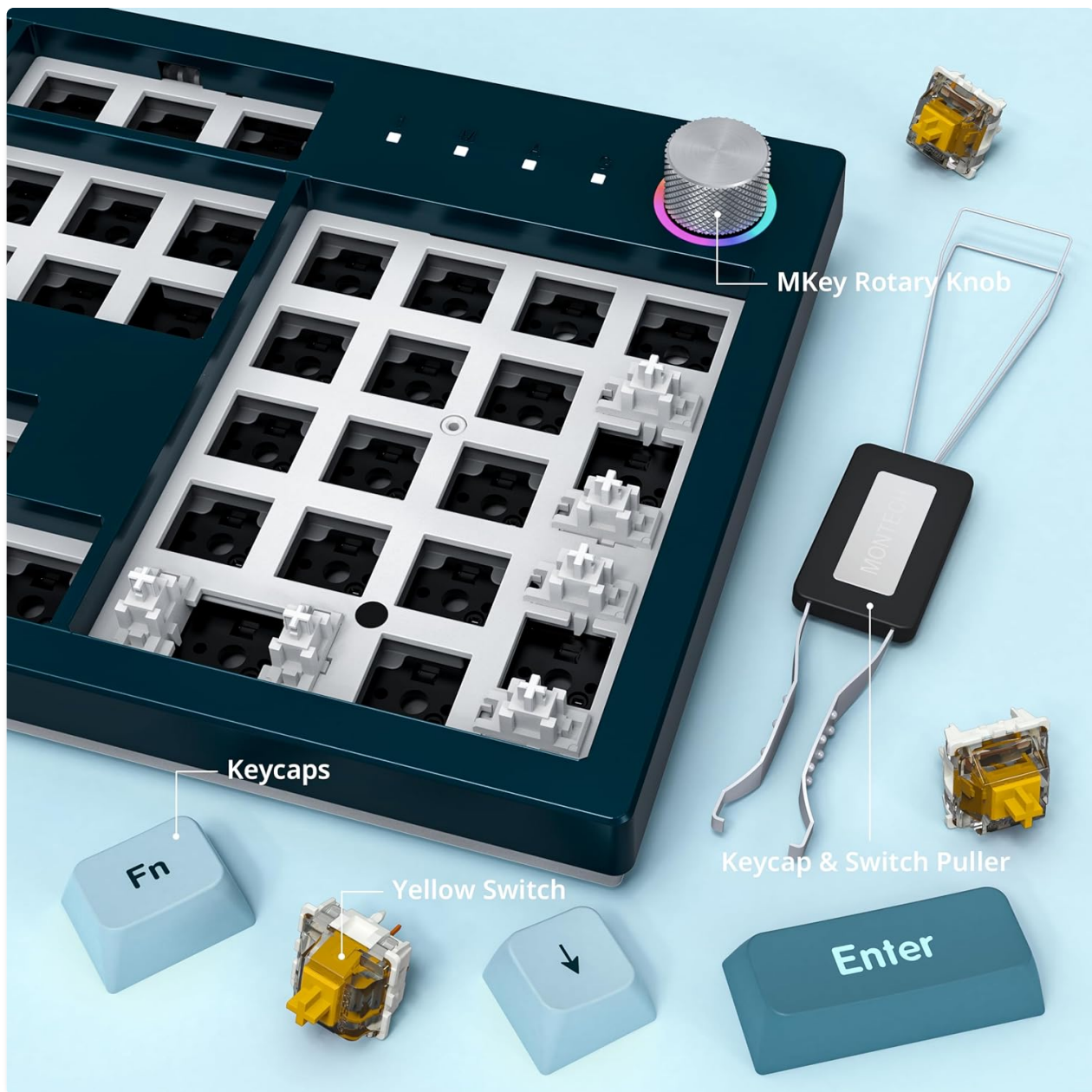


Image 2.1: Components of the Montech MKey keyboard, including keycaps, switches, and the keycap/switch puller tool.

3. SETUP GUIDE

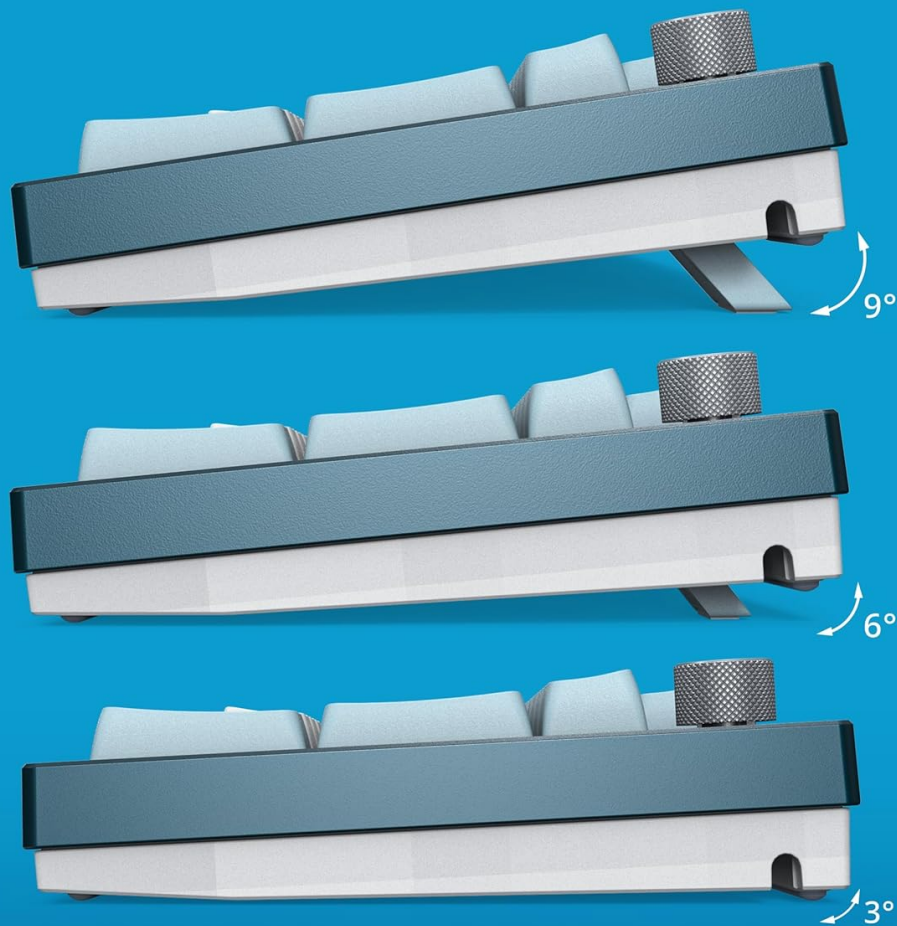
3.1 Connecting the Keyboard

1. Locate the USB Type-C port on the back of the Montech MKey keyboard.
2. Connect one end of the provided USB Type-C cable to the keyboard.
3. Connect the other end of the USB cable to an available USB port on your computer.
4. The keyboard will automatically be recognized by your operating system (Windows 10 or later recommended).

3.2 Adjusting Keyboard Tilt

The keyboard features adjustable feet to set your preferred typing angle for optimal comfort.

- **Flat Position:** Keep the feet folded for a minimal tilt.
- **Medium Tilt:** Extend the first set of feet for a moderate angle.
- **High Tilt:** Extend both sets of feet for the maximum ergonomic angle.



Ergonomic Design with Adjustable Tilt Angles for Optimal Comfort

Image 3.1: The Montech MKey keyboard offers adjustable tilt angles for ergonomic comfort.

4. OPERATING INSTRUCTIONS

4.1 Basic Keyboard Functions

The Montech MKey functions as a standard full-size keyboard. All keys perform their labeled functions directly. For special functions, use the **Fn** key in combination with other keys.

4.2 Function Key Combinations (Fn Key)

Press and hold the **Fn** key, then press the corresponding key for the desired function:

- **Fn + F1-F4:** RGB LED lighting control (e.g., mode change, brightness adjustment).
- **Fn + F7-F12:** Media control functions (e.g., Play/Pause, Stop, Previous Track, Next Track, Mute, Volume Down, Volume Up).
- **Fn + Calculator Key:** Opens the calculator application.



A Powerhouse of Features for Enhanced Productivity

Image 4.1: Overview of the Montech MKey keyboard layout, highlighting function key assignments for media and lighting control.

4.3 Rotary Knob Functions

The multi-functional rotary knob located on the top right of the keyboard provides quick access to various settings. It typically supports three modes:

- **Volume Control:** Rotate to adjust system volume. Press to mute/unmute.
- **Zoom Function:** Rotate to zoom in/out.
- **RGB Lighting Control:** Rotate to cycle through lighting effects or adjust brightness.

The specific mode can often be switched by pressing the knob or using associated function key combinations.

5. CUSTOMIZATION

5.1 Hot-Swappable Switches

The Montech MKey keyboard features hot-swappable sockets, allowing you to change mechanical switches without soldering. It supports both 3-pin and 5-pin switches.

1. **Removing a Switch:** Use the provided switch puller tool. Gently grip the top and bottom clips of the switch and pull upwards.
2. **Installing a Switch:** Align the pins of the new switch with the holes on the PCB. Press down firmly until the switch clicks into place. Ensure pins are not bent.

The keyboard comes pre-installed with Gateron G Yellow Pro 2.0 pre-lubed switches, known for their smooth linear feel.



Image 5.1: A close-up view of a Gateron Yellow switch with active RGB backlighting.

5.2 Keycaps

The keyboard is equipped with premium MDA profile PBT keycaps, which offer a unique feel and durability. The keycaps feature 5-sided dye-sublimation for vivid and long-lasting designs.

1. **Removing a Keycap:** Use the provided keycap puller. Hook the puller onto the keycap and pull upwards evenly.
2. **Installing a Keycap:** Align the keycap stem with the switch stem and press down gently until it is seated securely.

6. MAINTENANCE

6.1 Cleaning the Keyboard

Regular cleaning helps maintain the keyboard's appearance and functionality.

- **Dust Removal:** Use a can of compressed air to blow away dust and debris from between the keycaps.
- **Surface Cleaning:** Wipe the keycaps and keyboard frame with a soft, slightly damp, lint-free cloth. Avoid excessive moisture.
- **Deep Cleaning (Keycaps):** For thorough cleaning, remove the keycaps using the keycap puller and wash them with mild soap and water. Ensure they are completely dry before reattaching.

Caution: Do not spray cleaning solutions directly onto the keyboard. Always disconnect the keyboard from your computer before cleaning.

7. TROUBLESHOOTING

If you encounter issues with your Montech MKey keyboard, refer to the following common solutions:

- **Keyboard Not Responding:**
 - Ensure the USB cable is securely connected to both the keyboard and the computer.
 - Try connecting the keyboard to a different USB port on your computer.
 - Test the keyboard on another computer to rule out system-specific issues.
- **RGB Lighting Not Working/Incorrect:**
 - Check the function key combinations (Fn + F1-F4) to ensure lighting is enabled and set to the desired mode.
 - Ensure no software conflicts are present if using third-party RGB control applications.
 - Visit the Montech website for any available software or firmware updates that might resolve lighting issues.
- **Keys Not Registering:**
 - Carefully remove the keycap and switch for the affected key.
 - Inspect the switch pins for any bends or damage. Straighten bent pins gently if possible.
 - Reinsert the switch firmly into the socket. If the issue persists, try replacing the switch with a known working one.

8. SPECIFICATIONS

Feature	Specification
Brand	Montech
Model Number	MK105FY
Connectivity Technology	USB Type-C (Detachable)
Switches	Gateron G Yellow Pro 2.0 (Pre-lubed, Linear)
Keycap Material	PBT
Keycap Profile	MDA Profile
Backlighting	Customizable RGB LED
Hot-Swappable	Yes (Kailh sockets, supports 3-pin and 5-pin switches)
Operating System Compatibility	Windows 10 (PC Hardware Platform)
Product Dimensions (LxWxH)	17.44 x 5.35 x 1.61 inches (44.3 x 13.6 x 4.1 cm)
Item Weight	4.54 pounds (2.06 kg)
Special Features	Rotary Knob, Acoustic Absorb Pads

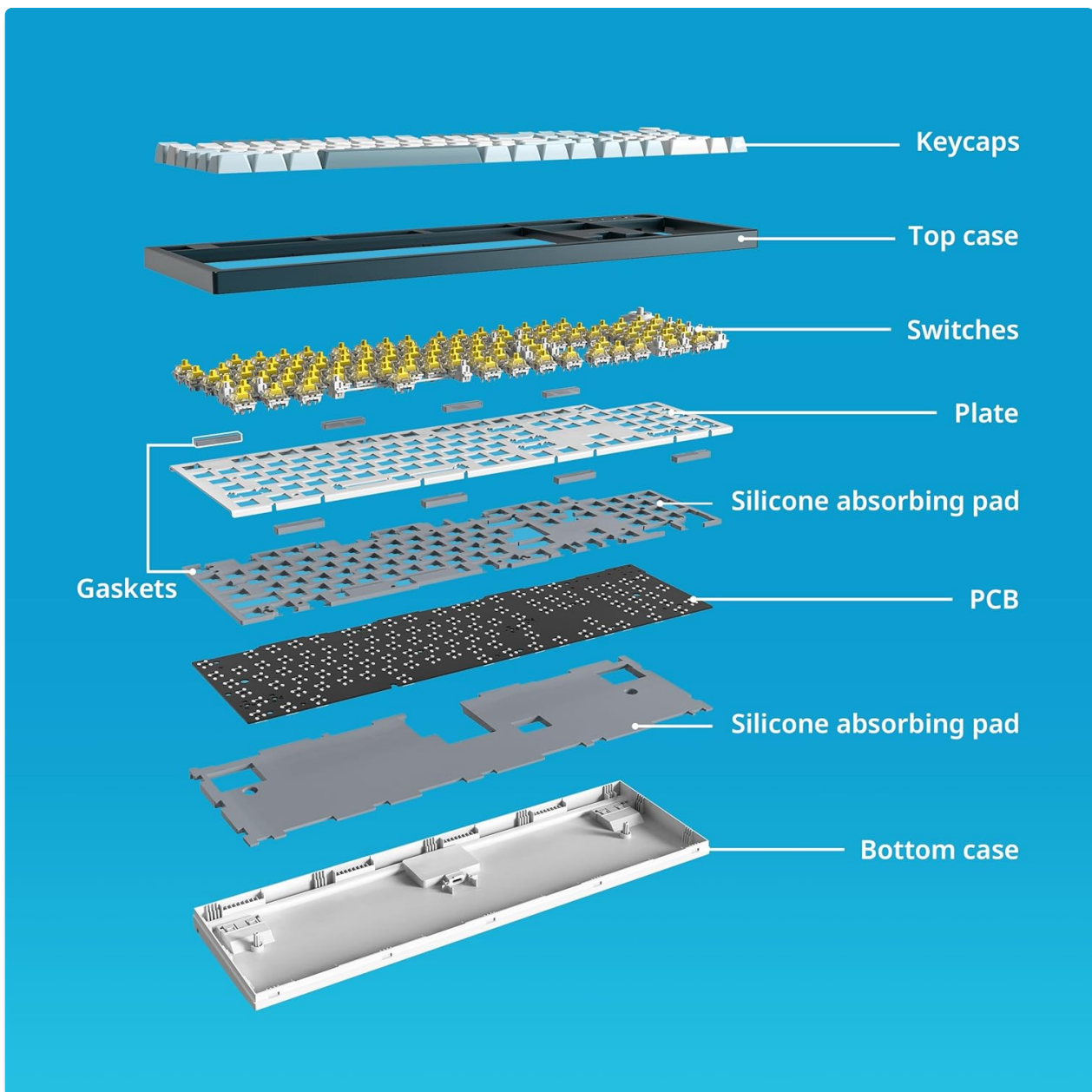


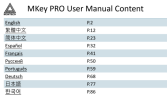





Image 8.1: Exploded view illustrating the layered construction of the Montech MKey keyboard, including acoustic dampening components.


9. WARRANTY AND SUPPORT

For warranty information, technical support, or further assistance, please refer to the official Montech website or contact Montech customer service directly. Details regarding product registration and warranty claims can typically be found on the manufacturer's support pages.

Montech Official Website: www.montechpc.com

 MKey Keyboard shortcuts directions	Montech MKey Keyboard User Manual and Features Comprehensive guide to the Montech MKey keyboard, covering installation, safe usage, disposal, specifications, and detailed shortcut key functions for enhanced productivity.
 MKey PRO User Manual & 2700dpikey manual Unleash the power of a legendary innovation Reborn from scratch	Montech MKey PRO User Manual and Connectivity Guide Comprehensive user manual for the Montech MKey PRO keyboard, detailing its features, connectivity options (Bluetooth 5.2, 2.4GHz, USB-C), dual-mode switching (Windows/macOS), shortcut keys, and safety guidelines. Available in multiple languages.
 MKey PRO User Manual Content English #1 繁體中文 #2 簡體中文 #3 Français #4 Deutsch #5 Español #6 Português #7 日本語 #8 한국어 #9	MONTECH MKey PRO User Manual and Guide - Setup, Connectivity, and Features Comprehensive user manual for the MONTECH MKey PRO keyboard. Learn about its multi-mode connectivity (Bluetooth 5.2, 2.4GHz, USB-C), dual-mode switching, ARGB lighting, warranty, and safety guidelines.
 MKey PRO Update Firmware SOP English #2 繁體中文 #8	MKey PRO Firmware Update Guide A step-by-step guide for updating the firmware of the Montech MKey PRO keyboard using the QMK Toolbox.
 MKey PRO Update Firmware SOP English #2 繁體中文 #8	MKey PRO Firmware Update Guide This guide provides step-by-step instructions for updating the firmware on the MKey PRO keyboard using QMK Toolbox. It covers downloading and installing the software, preparing the keyboard, and completing the update process.
 MKey PRO Update Firmware SOP English #2 繁體中文 #8	MKey PRO Firmware Update Guide - MONTECH Step-by-step instructions for updating the firmware on your MONTECH MKey PRO keyboard using QMK Toolbox. Learn how to download, install, and use the software to flash new firmware.

Documents - Montech – MK105FY

	[pdf] Montech Mkey сымды пернетақтасыv1drv dns shop ru oth M montech mkey 87 instrukcia 121411 20032023 Montech Mkey ... MK87DY MK87FY MK105FY MK105DY Montech RGB 18 Gateron G Pro 2... lang:it score:32 filesize: 3.12 M page_count: 8 document date: 2023-03-13
	[pdf] montech mkey 87 instrukcia 121411 20032023 Index of oth M ftp dns shop ru Montech Mkey . . - , - . . . , - , . . MK87DY MK87FY MK105FY MK105DY Montech RGB 18 Gateron G Pro 2.0 Yellow PBT MDA 87 108 3 USB 5 , 1 , , USB Type-C , USB Type-... lang:nl score:31 filesize: 3.12 M page_count: 8 document date: 2023-03-13

