

TOWODE Alarme Maison

TOWODE Home Alarm System Kit User Manual

Model: Alarme Maison

Brand: TOWODE

1. INTRODUCTION

This user manual provides detailed instructions for the installation, operation, and maintenance of your TOWODE Home Alarm System Kit. This wireless security system is designed to protect your property with a loud siren, motion detection, and door/window sensors. The system comes pre-programmed for immediate use upon plugging into an outlet and arming via remote. It is also expandable, supporting up to 40 sensors and 10 remote controls. Please read this manual thoroughly before using the product to ensure proper functionality and safety.

Unplug and plug the horn siren 3 times to pair remotes and sensors

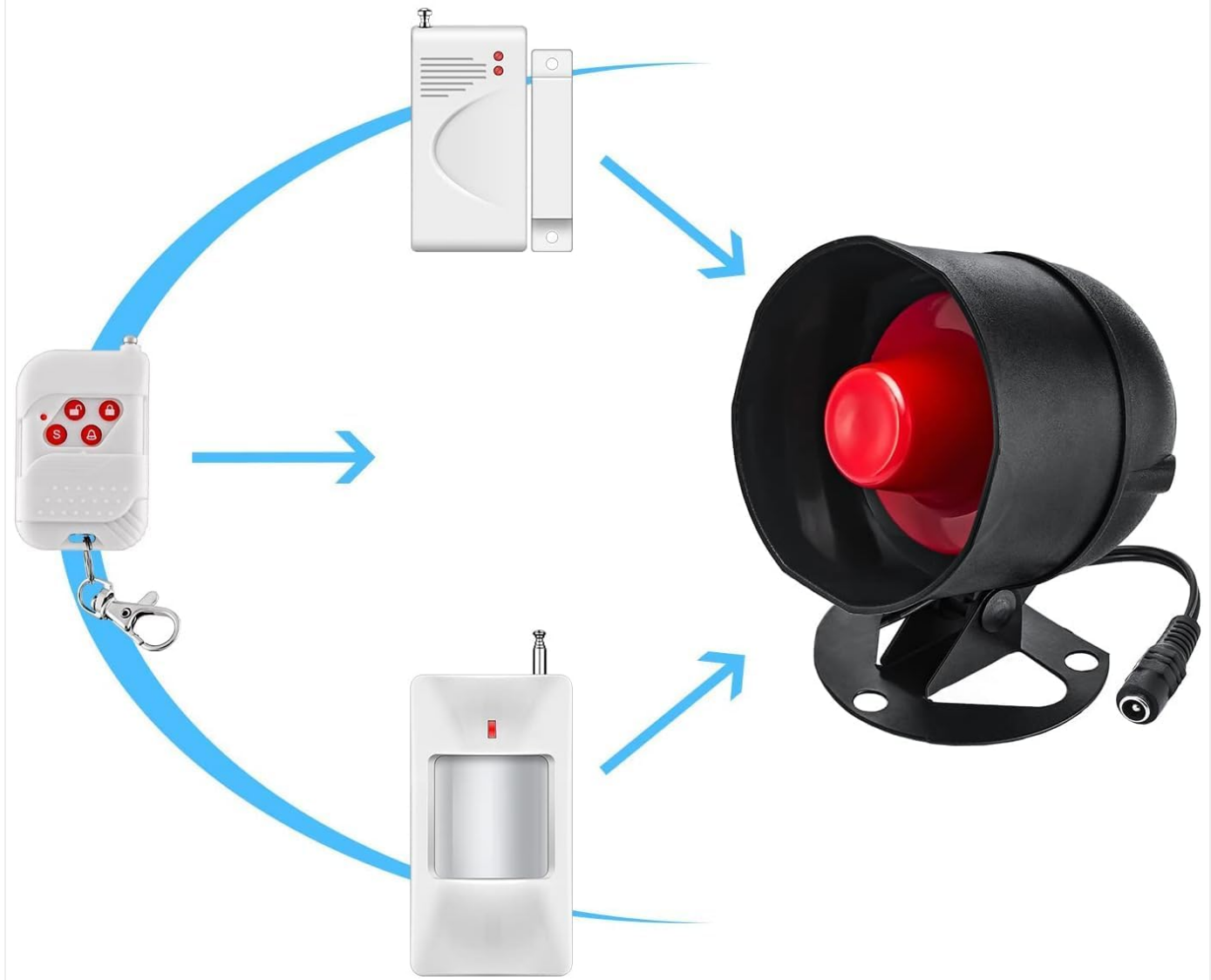


Figure 1: An overview of the TOWODE KERUI Alarm System components, highlighting its expandability with additional sensors and remotes, and noting that it comes pre-programmed for immediate use.

2. PACKAGE CONTENTS

The TOWODE Home Alarm System Kit includes the following components:

- 1x Siren (Horn)
- 1x Infrared Motion Detector
- 2x Wireless Door/Window Alarm Sensors
- 2x Remote Controls
- 1x Power Adapter (for siren)
- Mounting screws and double-sided adhesive tape

3. SETUP AND INSTALLATION

Follow these steps to set up your alarm system:

3.1 Siren Installation

1. Choose a central location for the siren, preferably where its sound can be heard clearly throughout the protected area.
2. Mount the siren to a wall using the provided screws. Drilling may be required.
3. Connect the siren to the power adapter, then plug the adapter into a standard electrical outlet.



Figure 2: Siren components and installation points.

3.2 Motion Detector (PIR Sensor) Installation

1. Install the infrared motion detector on a wall in an area where it can cover the desired detection zone. Avoid pointing it directly at heat sources or windows that receive direct sunlight.
2. Secure the detector using screws.

3. The detection angle is approximately 110° horizontal and 60° vertical, with a detection range of 6-8 meters.



Figure 3: Motion detector coverage area.

3.3 Door/Window Sensor Installation

1. Attach the two parts of the door/window sensor to the door/window frame and the movable part (door/window) using double-sided adhesive tape or screws.
2. Ensure the two parts are aligned and close to each other (within 1 cm) when the door/window is closed.
3. The sensor is powered by a 1x 23A 12V battery (included).



Figure 4: Wireless door sensor installation.

3.4 Pairing Remote Controls and Sensors

The system is typically pre-programmed before shipment. If you need to pair new accessories or re-pair existing ones:

1. Unplug the siren from the power outlet.
2. Plug the siren back into the power outlet.
3. Repeat unplugging and plugging in the siren 3 times. This puts the siren into pairing mode.
4. Within a short time after the third plug-in, trigger the sensor (e.g., open the door for a door sensor, or wave in front of the motion detector) or press any button on the remote control. The siren will emit a sound to confirm successful pairing.

KERUI Alarm System



Introduction: You can DIY this alarm system and add more sensors based on the need maximum 30pc sensors,8 remotes, 4 doorbell buttons supportable.

Using: It's programmed ready before shipment and can be used directly after receiving by plugging into outlet then pressing arming key on remote.

Figure 5: Pairing process for sensors and remotes.

The system supports up to 10 remote controls and 40 sensors. You can expand your system by adding more compatible TOWODE accessories.

4. OPERATING INSTRUCTIONS

4.1 Arming the System

To arm the system, press the **Arm** button (usually a closed padlock icon) on your remote control. The siren will emit a confirmation sound, indicating the system is armed and ready to detect intrusions.

How does this siren system protect you house ?

1. Press arm key on the remote controller, and then the siren will at work to protect your house.



2. When the door sensor, pir sensor, curtain decetors or other sensor is triggered this Host speaker will alarm and make a 110db voice to remind you.

Figure 6: How the alarm system detects and protects.

4.2 Disarming the System

To disarm the system, press the **Disarm** button (usually an open padlock icon) on your remote control. The siren will emit a confirmation sound, indicating the system is disarmed.

4.3 Emergency (SOS) Function

In case of an emergency, press the **[S]** button on your remote control. This will immediately trigger the siren to sound at 115 dB, alerting others in the vicinity and potentially deterring intruders. This function can be used for emergency calls for help.

4.4 Alarm Trigger and Duration

When a paired sensor (motion detector or door/window sensor) is triggered while the system is armed, the siren will sound for approximately 2 minutes at 115 dB. If the system is not disarmed manually after this period, the siren will stop, and the system will need to be re-armed to resume protection.

Note: The siren volume is fixed and cannot be adjusted.

5. MAINTENANCE

Regular maintenance ensures the optimal performance of your alarm system:

- **Battery Replacement:** The wireless door/window sensors and remote controls use 23A 12V batteries. Replace batteries when the indicator light on the sensor or remote appears dim or when performance degrades.
- **Cleaning:** Periodically clean the exterior of all components with a soft, dry cloth. Do not use abrasive cleaners or solvents.
- **Connection Check:** Ensure all wired connections (siren power) are secure and free from damage.
- **Functionality Test:** Test the system regularly by arming it and triggering each sensor to ensure the siren sounds correctly.

6. TROUBLESHOOTING

If you encounter issues with your TOWODE Home Alarm System, refer to the following common problems and solutions:

Problem	Possible Cause	Solution
Siren does not sound when triggered.	<ul style="list-style-type: none">◦ Siren not powered.◦ System not armed.◦ Sensor battery low or dead.◦ Sensor not paired.	<ul style="list-style-type: none">◦ Check power connection to the siren.◦ Ensure the system is armed using the remote.◦ Replace sensor batteries.◦ Re-pair the sensor with the siren (refer to Section 3.4).
Remote control not working.	<ul style="list-style-type: none">◦ Remote control battery low or dead.◦ Remote control not paired.	<ul style="list-style-type: none">◦ Replace remote control battery.◦ Re-pair the remote control with the siren (refer to Section 3.4).
False alarms from motion detector.	<ul style="list-style-type: none">◦ Incorrect placement (e.g., near heat sources, direct sunlight, pets).	<ul style="list-style-type: none">◦ Adjust the motion detector's position to avoid false triggers.
Siren stops after 2 minutes.	<ul style="list-style-type: none">◦ Normal operation.	<ul style="list-style-type: none">◦ This is by design. Re-arm the system manually if continued protection is needed.

7. SPECIFICATIONS

Feature	Detail
Brand	TOWODE
Model Number	Alarme Maison
Siren Volume	115 dB (fixed)
Power Source (Siren)	Wired (AC Power Adapter)
Voltage	230 Volts

Feature	Detail
Connectivity Technology	Wireless
Wireless Range	Up to 100 meters (open area)
Max Remote Controls	10
Max Sensors	40
Motion Detector Coverage	110° Horizontal, 60° Vertical; 6-8m range
Door/Window Sensor Battery	1x 23A 12V (included)
Dimensions (Siren)	12.45 x 15.49 x 16.51 cm
Weight	520 grams

8. SUPPORT AND CONTACT INFORMATION




For any questions, technical assistance, or support regarding your TOWODE Home Alarm System Kit, please contact the seller or manufacturer directly. Refer to your purchase documentation for specific contact details.



Manufacturer: TOWODE

We are committed to providing high-quality products and support.



Related Documents - Alarme Maison

	<p>TOWODE Water Detector User Manual: Operation and Battery Replacement Guide</p> <p>Comprehensive user manual for the TOWODE Water Detector, detailing product features, specifications, battery replacement steps, and warranty information. Learn how to effectively use and maintain your leak detection device.</p>
	<p>TOWODE Fingerprint Padlock: Setup, Usage, and Warranty Guide</p> <p>Comprehensive guide for the TOWODE fingerprint padlock, covering fingerprint setup, deletion, charging, low power alerts, warranty information, and customer support.</p>
	<p>TOWODE Water Detector User Manual: Operation and Battery Replacement Guide</p> <p>Comprehensive user manual for the TOWODE Water Detector, detailing product features, specifications, battery replacement steps, and warranty information. Learn how to effectively use and maintain your leak detection device.</p>

<p>CAPA</p>	<p>Manual e Guia de Instalação do Sistema de Alarme LOOK-OUT START KEY</p> <p>Guia completo para o sistema de alarme LOOK-OUT START KEY, cobrindo instalação, operação, características, especificações, programação e informações de garantia.</p>
	<p>Sistema de Alarme para Elevadores Helpy Compact - Guia Rápido</p> <p>Guia rápido do utilizador para o sistema de alarme para elevadores Helpy Compact da Esse-ti, em conformidade com a norma EN 81-28:2018. Detalha conexões, programação e operação.</p>
	<p>Nedis WIFIDS20WT/WIFIDS20WT3 Wi-Fi Smoke Alarm - Quick Start Guide</p> <p>Discover the Nedis WIFIDS20WT/WIFIDS20WT3 Wi-Fi Smoke Alarm. This guide provides essential information on its intended use, features, installation, and app connectivity for enhanced home safety. Learn how to set up your smoke detector for reliable smoke detection.</p>