



Manuals.plus /

› EtlIN /

› EtlIN Replacement Parts for ZiGMA Spark 980 Robot Vacuum Cleaner - Instruction Manual

EtlIN 2269

EtlIN Replacement Parts for ZiGMA Spark 980 Robot Vacuum Cleaner - Instruction Manual

Model: 2269

INTRODUCTION

This manual provides instructions for the installation, maintenance, and replacement of EtlIN brand spare parts compatible with the ZiGMA Spark 980 Robot Vacuum Cleaner. Regular replacement of these components ensures optimal performance and extends the lifespan of your robot vacuum.

PACKAGE CONTENTS

The EtlIN replacement parts kit typically includes:

- Side Brushes
- HEPA Filters
- Filter Frames (if applicable)

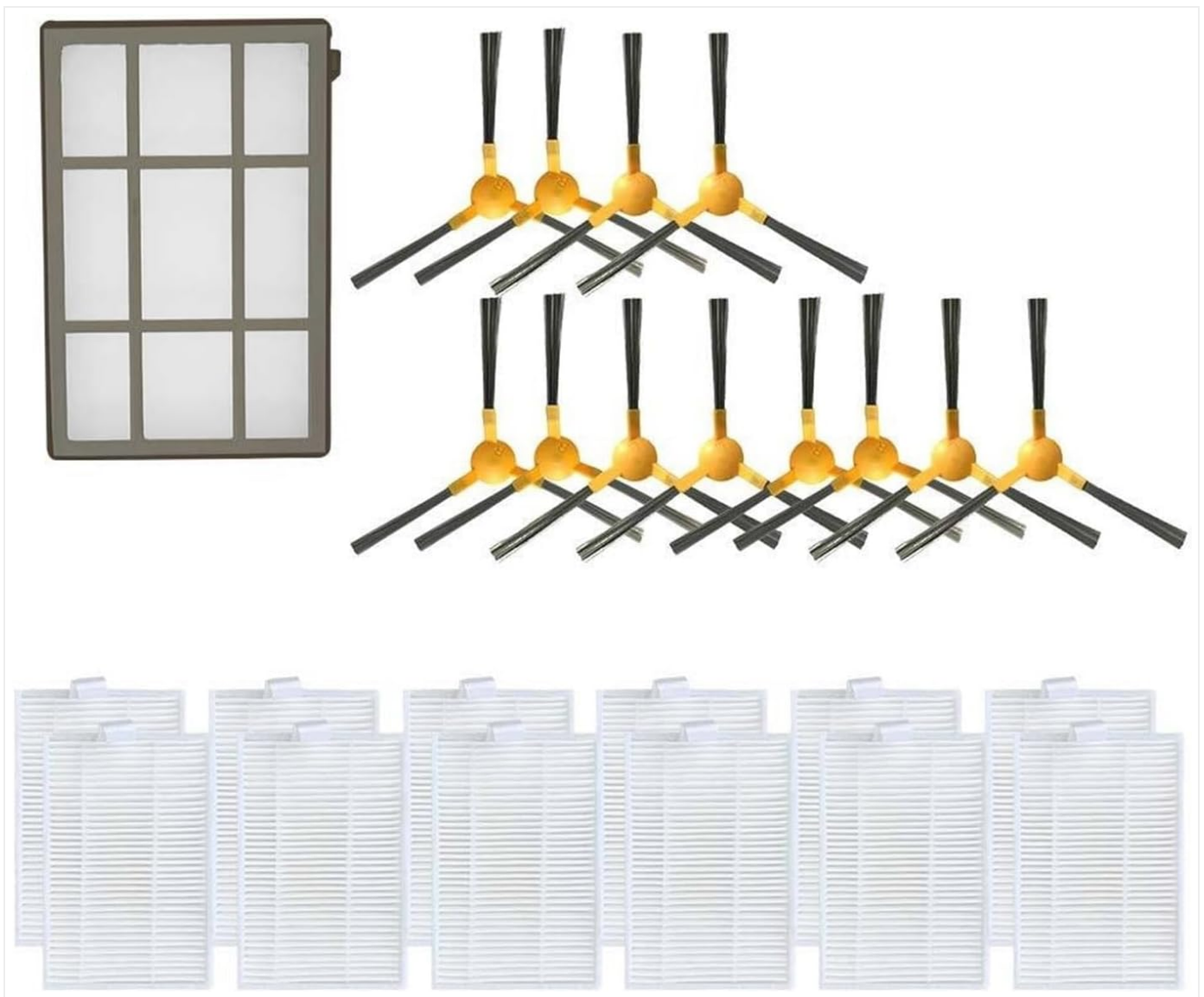


Figure 1: Overview of the EtlIN replacement parts kit, showing multiple side brushes, HEPA filters, and a filter frame.

INSTALLATION INSTRUCTIONS

1. Replacing Side Brushes

1. Turn off your ZIGMA Spark 980 robot vacuum cleaner and place it upside down on a flat surface.
2. Locate the existing side brushes. They are typically held in place by a screw.
3. Using a screwdriver (not included), carefully remove the screw holding the old side brush.
4. Remove the old side brush.
5. Align the new EtlIN side brush with the corresponding slot on the vacuum cleaner. Ensure the 'L' (left) and 'R' (right) markings on the brush match the vacuum's markings, if present.
6. Secure the new side brush with the screw. Do not overtighten.



Figure 2: Two replacement side brushes, showing the three-arm design and central attachment point.

2. Replacing HEPA Filters

1. Open the dustbin compartment of your ZiGMA Spark 980 robot vacuum cleaner. Refer to your vacuum's main manual for specific instructions on accessing the dustbin.
2. Remove the dustbin from the vacuum.
3. Locate the filter assembly within the dustbin. This usually involves removing a filter frame or cover.
4. Carefully remove the old HEPA filter and any pre-filters. Dispose of them properly.
5. Insert the new EtliN HEPA filter into the filter slot. Ensure it is seated correctly and snugly.
6. If your vacuum uses a filter frame, place the new HEPA filter into the frame and then insert the assembly into the dustbin.
7. Close the filter compartment and reinsert the dustbin into the robot vacuum until it clicks into place.

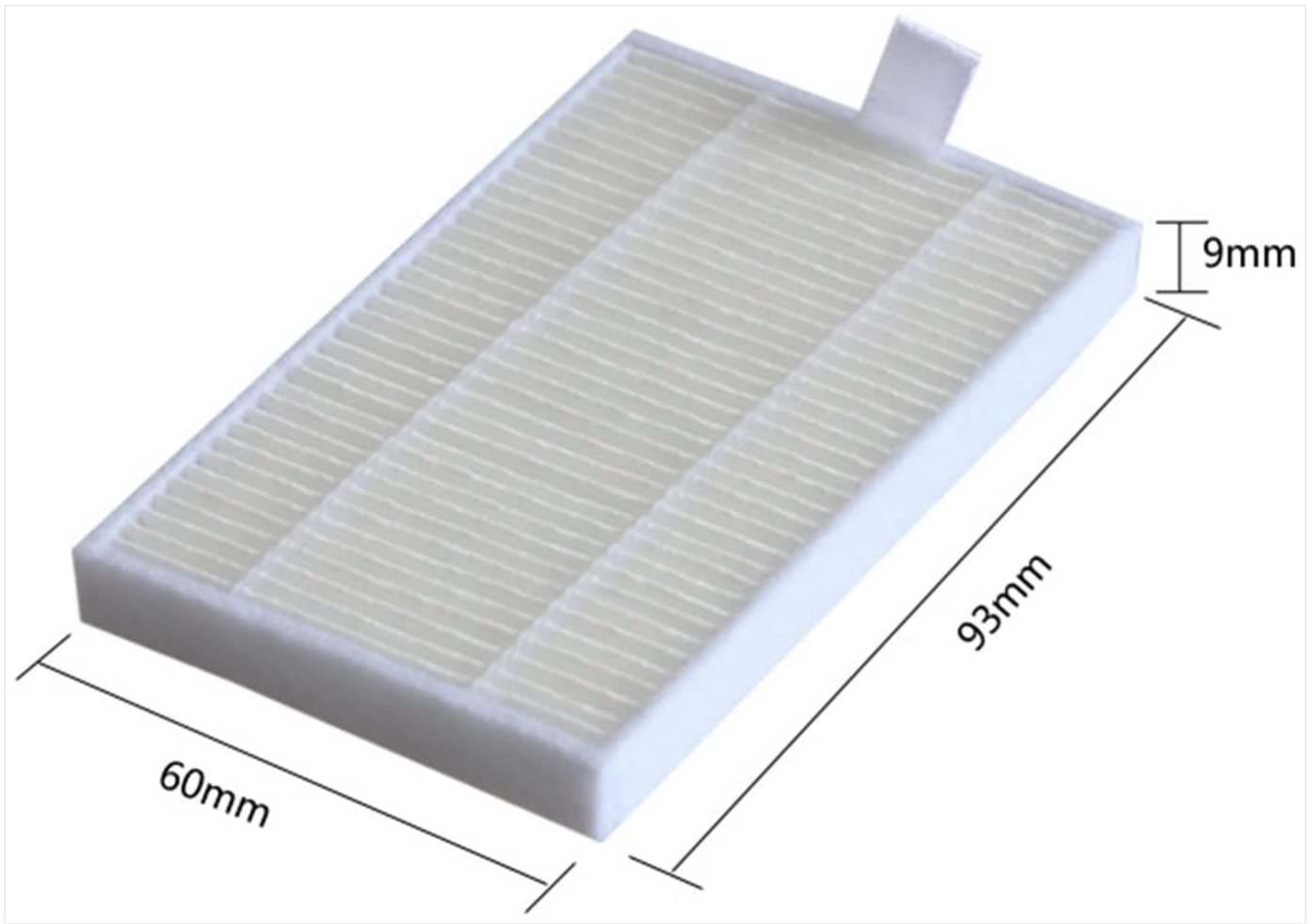


Figure 3: A single HEPA filter with indicated dimensions for proper fitment.



Figure 4: Front view of a pleated HEPA filter, designed to capture fine dust particles.

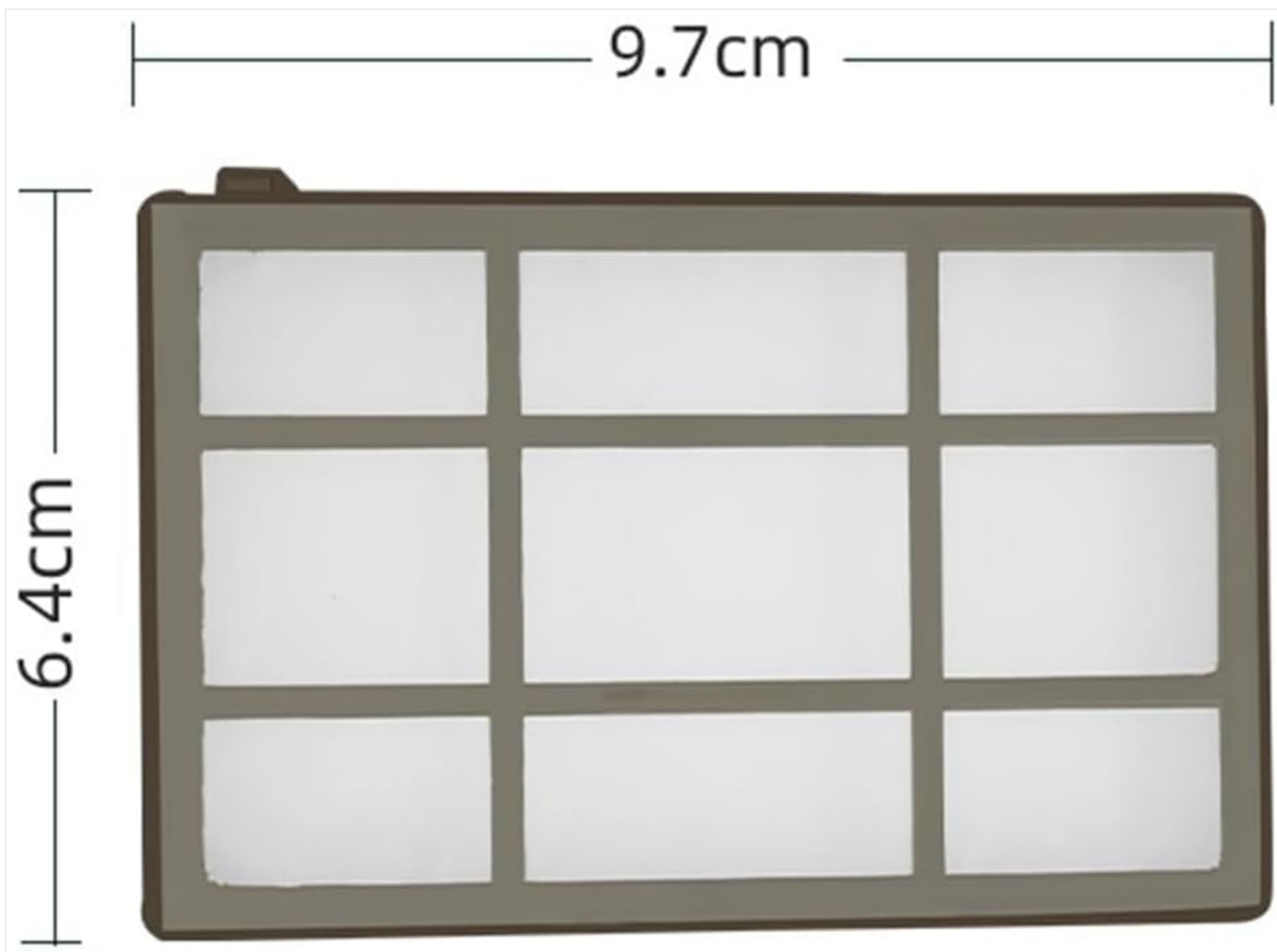


Figure 5: A filter frame, showing its dimensions for compatibility with the HEPA filter.

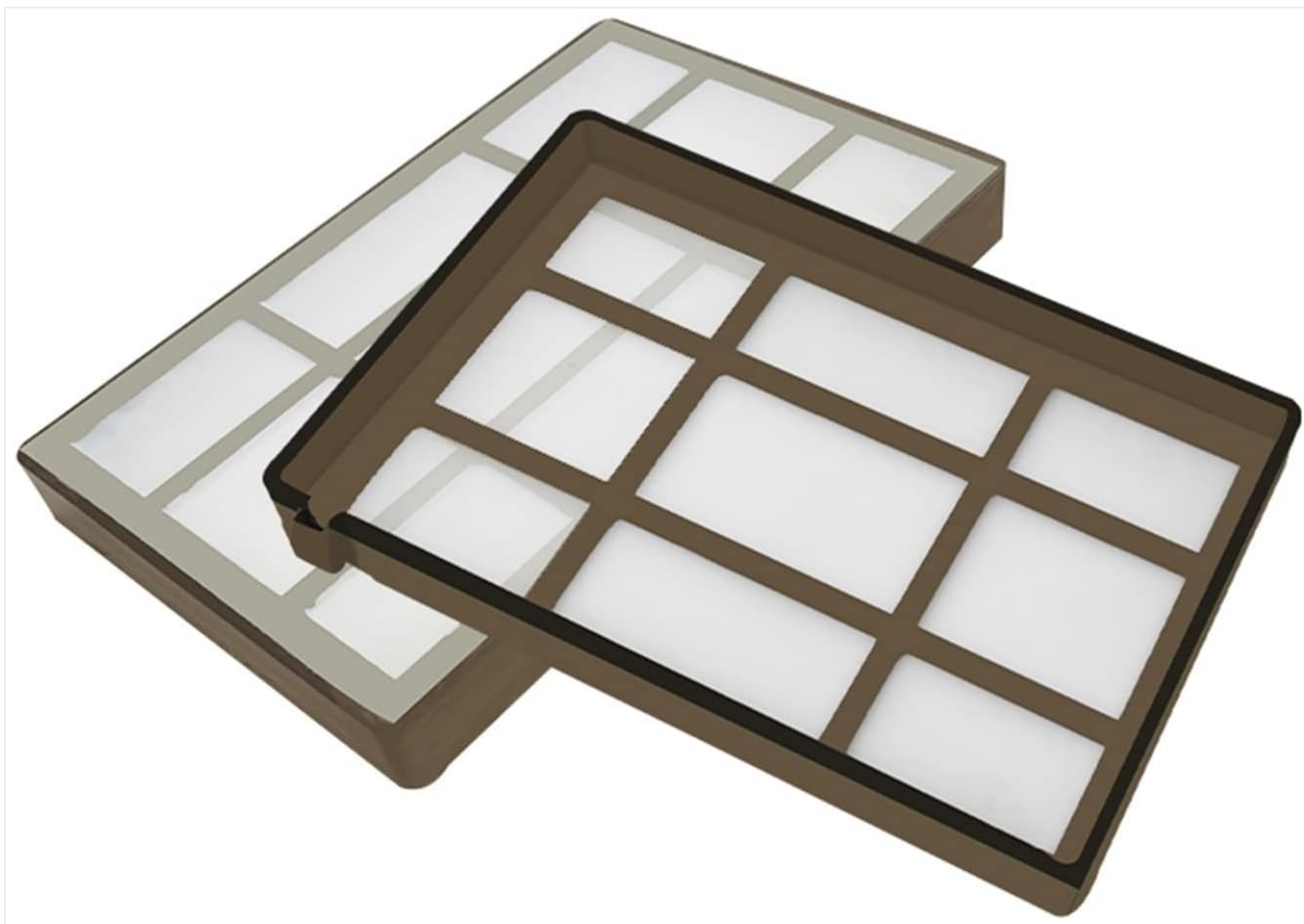


Figure 6: Two filter frames, providing a visual reference for the component.

MAINTENANCE

Side Brushes

- **Cleaning:** Regularly check side brushes for tangled hair or debris. Use scissors or a cleaning tool to remove any obstructions.
- **Replacement Frequency:** Replace side brushes every 3-6 months, or sooner if they become visibly worn, bent, or damaged, as this can affect cleaning efficiency.

HEPA Filters

- **Cleaning:** Tap the filter gently over a trash can to remove loose dust. Do not wash HEPA filters with water, as this can damage the filter material.
- **Replacement Frequency:** Replace HEPA filters every 1-3 months, depending on usage and pet presence. A clogged filter reduces suction power and air quality.

TROUBLESHOOTING

- **Side brush not spinning or cleaning effectively:**
 - Check for tangled hair or debris around the brush and its motor. Clean thoroughly.
 - Ensure the brush is securely attached with the screw.
 - If the brush is bent or damaged, replace it.
- **Reduced suction power or dust leakage:**
 - Check if the HEPA filter is clogged with dust. Clean or replace it.
 - Ensure the HEPA filter and dustbin are correctly installed and sealed.

SPECIFICATIONS

| Component | Specification |
|-----------------------------------|--------------------------------------|
| Product Model Number | 2269 |
| Compatibility | ZiGMA Spark 980 Robot Vacuum Cleaner |
| HEPA Filter Dimensions (approx.) | 93mm (L) x 60mm (W) x 9mm (H) |
| Filter Frame Dimensions (approx.) | 9.7cm (L) x 6.4cm (W) |
| Item Weight | 1.76 ounces (total kit) |
| Manufacturer | EtiIN |

WARRANTY AND SUPPORT

For any questions regarding the EtiIN replacement parts or for support, please refer to the retailer where the product was purchased or contact EtiIN customer service directly. Specific warranty information may vary by region and retailer.

