



Manuals.plus /

› RIVOODS /

› RIVOODS Suction Cup Handheld Shower Head Holder Instruction Manual (Model SH01-M-S)

RIVOODS SH01-M-S

RIVOODS Suction Cup Handheld Shower Head Holder Instruction Manual

Model: SH01-M-S

1. INTRODUCTION

Thank you for choosing the RIVOODS Suction Cup Handheld Shower Head Holder. This product is designed to provide a flexible and convenient solution for positioning your handheld shower head. It features a strong suction cup for easy installation and adjustability to suit various user needs. Please read this manual thoroughly before installation and use to ensure proper function and longevity of the product.

2. PRODUCT FEATURES

- **Enhanced Suction Cup:** Constructed from high-grade rubber, 250% thicker than standard plastic suction cups, with an epoxy resin coating for improved adhesion and durability. It is designed for easy removal without wall damage and can be cleaned for reuse.
- **Adjustable Angles:** Offers 5 positions of adjustment, allowing for optimal shower head angles. The lower part of the holder can rotate to achieve a 90° downward position, useful for sitting or pet washing.
- **Large Shower Head Compatibility:** Robust design supports heavy, metal, and large shower heads securely.
- **Surface Versatility:** Best suited for flat, smooth surfaces such as tiles, glass, and marble. For slightly textured surfaces like fiberglass, metal, plastic, wood, or granite, use the included adhesive pad for a permanent fixture.
- **Wider Input Slot:** Features a 0.92-inch diameter slot to accommodate most shower hoses, sprayers, wands, and nozzles.

WHY CHOOSE US



- | | |
|---------------------------------------------------------------------------|----------------------------------------------------------------------|
| <input checked="" type="checkbox"/> Designed for heavy duty | <input type="checkbox"/> Large/heavy/metal shower heads fits |
| <input checked="" type="checkbox"/> Wider Fitting Slot (0.92 inch) | <input type="checkbox"/> Regular holder slot (0.86 - 0.88 inch) |
| <input checked="" type="checkbox"/> Most flexible Adjustment | <input type="checkbox"/> 5 Angles adjustable
90° downward setting |
| <input checked="" type="checkbox"/> Detachable design | <input type="checkbox"/> Easy install
Easy removal |
| <input checked="" type="checkbox"/> Enhanced suction cup | <input type="checkbox"/> 250% thicker
Epoxy resin coating |
| <input checked="" type="checkbox"/> Removable/reloctable | <input type="checkbox"/> Clean under water |
| <input checked="" type="checkbox"/> Wall protection New | <input type="checkbox"/> 3 x rubber wall plugs |
| <input checked="" type="checkbox"/> Adhesive option New | <input type="checkbox"/> For porous surfaces |
| <input checked="" type="checkbox"/> Overall chrome finish | <input type="checkbox"/> Easy clean/ anti-rust |

Figure 1: Key Product Features

Most powerful suction cup! Ever!

- **250% thick rubber suction cup**
 - Reusable
- **Epoxy resin coating**
 - Assists adhesion and durability
 - Wall friendly



1.5mm thick,
Pastic suction cup



Heavy duty

Figure 2: Enhanced Suction Cup Design

3. PACKAGE CONTENTS

Verify that all components are present in the package:

- 1x RIVOODS Suction Cup Handheld Shower Head Holder
- 1x Adhesive Pad (for textured surfaces)
- 2x Thicker Gaskets
- 3x Silicon Plugs

Product Upgrade-Log



Figure 3: Package Contents

4. INSTALLATION INSTRUCTIONS

4.1 Surface Preparation

1. Ensure the installation surface is clean, dry, and free from dust, soap scum, or oils.
2. For optimal suction, the surface should be smooth and non-porous (e.g., smooth tile, glass, marble).



Figure 4: Surface Compatibility for Installation

4.2 Suction Cup Installation (for Smooth Surfaces)

1. Position the shower head holder on the desired clean, smooth surface.
2. Press the suction cup firmly against the wall to expel air.
3. Twist the dial on the suction cup clockwise until it is securely locked and you feel resistance.
4. Test the holder by gently pulling on it to ensure it is firmly attached before placing the shower head.

4.3 Adhesive Pad Installation (for Slightly Textured Surfaces)

If your surface is slightly textured (e.g., fiberglass, metal, plastic, wood, granite), use the backup adhesive pad for a permanent fixture. Note that once the adhesive pad is used, the holder cannot be relocated without damaging the adhesive.

1. Clean and dry the desired surface thoroughly.
2. Peel off the protective film from one side of the adhesive pad and apply it to the back of the suction cup.
3. Peel off the remaining protective film from the adhesive pad.
4. Press the holder firmly against the wall in the desired location for at least 30 seconds.
5. Allow the adhesive to cure for 24 hours before placing the shower head or applying weight.

4.4 Shower Head Fitment

The holder features a wider input slot (0.92 inches) to accommodate most shower hoses with conical connectors. If your shower hose connector is smaller, the included thicker gaskets can be used to ensure a snug fit. The slot is tapered, designed for conical ends only. Straight-end hoses (e.g., Waterpik) are not compatible.



Figure 5: Shower Head Compatibility

5. OPERATION

Once installed, the RIVOODS shower head holder allows for flexible positioning of your handheld shower head.

- **Placing the Shower Head:** Gently insert the conical end of your handheld shower head into the holder's slot.
- **Angle Adjustment:** The holder offers 5 tilt angles. Simply push or pull the shower head to adjust its vertical angle.
- **90° Downward Adjustment:** The lower part of the holder can be rotated to achieve a unique 90° downward angle, providing flexibility for specific showering needs.
- **Side Rotation:** The holder also allows for side rotation, mimicking a rain showerhead experience.

The **Most Flexible** angle adjustment!

- **5** Angles tilt
- Unique **Horizontal** setting



Figure 6: Flexible Angle Adjustment

6. MAINTENANCE

Regular maintenance ensures optimal performance and extends the product's lifespan.

- **Cleaning the Suction Cup:** If the suction cup loses adhesion over time, detach the holder by twisting the dial counter-clockwise. Clean the suction cup under running water with mild soap, then allow it to air dry completely before re-installation.
- **General Cleaning:** Wipe the holder with a soft, damp cloth and mild soap. Avoid abrasive cleaners or harsh chemicals, as these can damage the polished chrome finish.

Detachable Construction

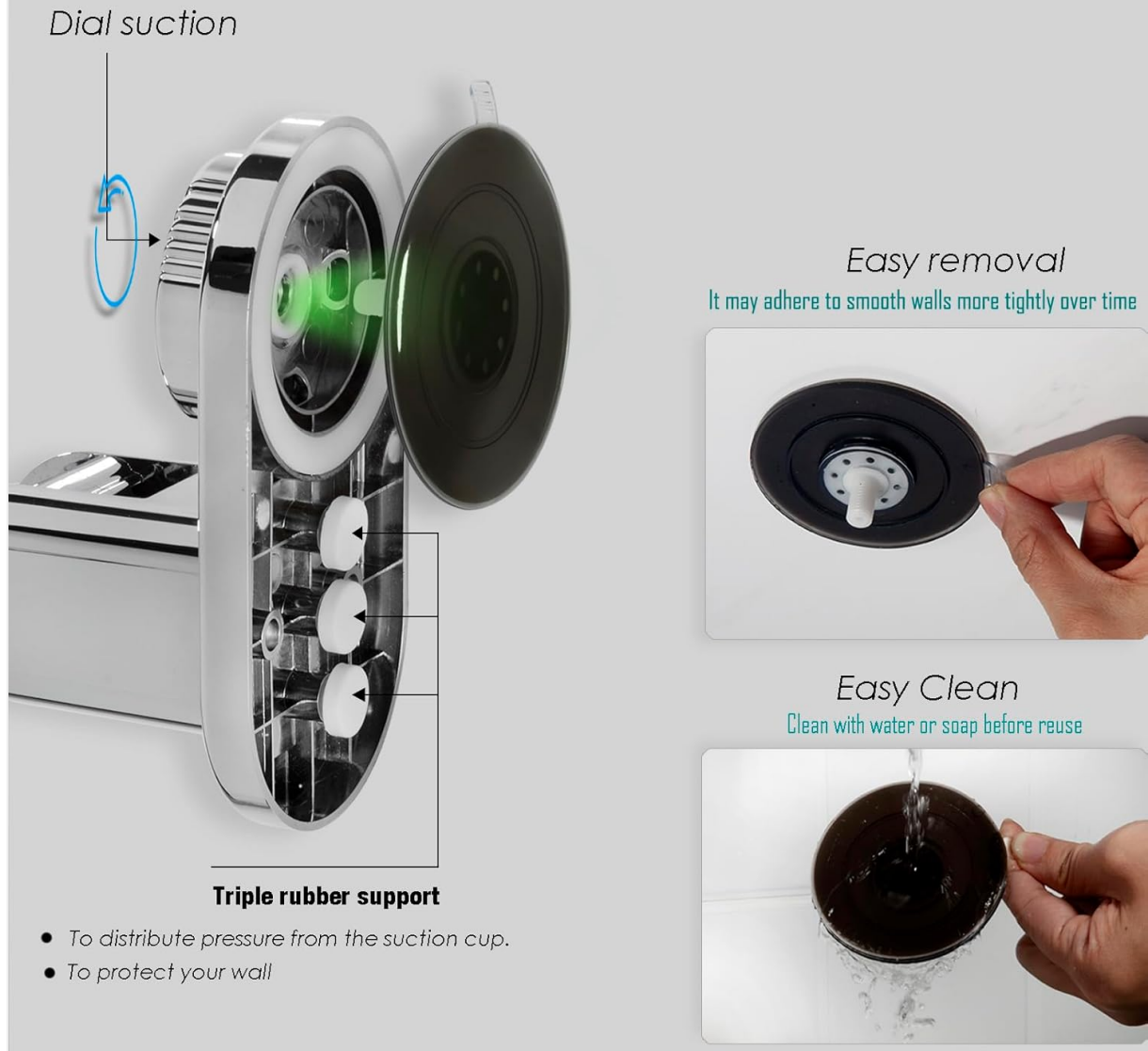


Figure 7: Detachable Construction for Easy Cleaning

7. TROUBLESHOOTING

Problem	Possible Cause	Solution
Suction cup does not hold	Surface is not clean or dry; surface is porous or textured; suction cup is dirty or damaged.	Clean and dry the surface thoroughly. Ensure the surface is smooth and non-porous. If the surface is slightly textured, use the included adhesive pad. Clean the suction cup with water and soap, then air dry before re-installation.
Shower head feels loose in the holder	Shower hose connector is smaller than the holder's slot.	Use the included thicker gaskets to create a more secure fit for smaller shower hose connectors.
Holder wobbles or moves after adjustment	Not securely tightened; heavy shower head causing movement.	Ensure the suction cup dial is twisted clockwise until fully tightened. Verify the shower head is properly seated.

8. SPECIFICATIONS

- **Brand:** RIVOODS
- **Model Number:** SH01-M-S
- **Material:** Acrylonitrile Butadiene Styrene (ABS)
- **Finish Type:** Polished Chrome
- **Installation Type:** Wall Mounted (Suction Cup / Adhesive)
- **Product Dimensions:** 5.8 x 2.9 x 3.5 inches
- **Item Weight:** 14 ounces
- **Number of Angle Settings:** 5
- **Special Features:** 5 angles adjustment, 90 degree downward adjustment

9. WARRANTY AND SUPPORT

RIVOODS is committed to providing high-quality products. For any questions, concerns, or support needs regarding your shower head holder, please refer to the retailer's return policy or contact RIVOODS customer service through the official brand store or your purchase platform. Please retain your proof of purchase for any warranty claims.