

Crucial CT2000X10PROSSD902

Crucial X10 Pro 2TB Portable SSD Instruction Manual

Model: CT2000X10PROSSD902

1. PRODUCT OVERVIEW

The Crucial X10 Pro Portable SSD is a high-performance external solid state drive designed for rapid data transfer and reliable storage. It offers advanced durability features and broad compatibility across various devices.

- **Ultra-fast Speeds:** Achieve up to 2,100MB/s read and 2,000MB/s write speeds for efficient file handling.
- **Durable Design:** Features IP55 water and dust resistance, along with drop protection up to 7.5 feet (2 meters). Includes a lanyard loop for secure portability.
- **Broad Compatibility:** Connects seamlessly with Windows, Mac, iPad Pro, Chromebooks, Android, Linux, PS4, PS5, and Xbox via USB-C and USB-A.
- **Massive Storage Capacity:** This 2TB model provides ample space for high-resolution photos, 4K/8K videos, and large project files.
- **Enhanced Security:** Supports SSD password protection for data security.



Figure 1: Crucial X10 Pro Portable SSD (Black)

This manual provides essential information for setting up, operating, and maintaining your Crucial X10 Pro Portable SSD.

2. SETUP INSTRUCTIONS

The Crucial X10 Pro Portable SSD is designed for plug-and-play functionality, making setup straightforward.

2.1 What's in the Box

- Crucial X10 Pro Portable SSD
- USB-C cable
- Mylio Photos+ redemption code

2.2 Connecting the SSD

1. Locate the USB-C port on your computer, tablet, or gaming console.
2. Connect one end of the included USB-C cable to the USB-C port on the Crucial X10 Pro SSD.
3. Connect the other end of the USB-C cable to the compatible USB-C port on your device.
4. The SSD should be automatically recognized by your operating system. If prompted, follow any on-screen instructions for initial setup or formatting.

Complete compatibility

Plug and play for Windows, Mac, Android and more



Figure 2: Broad compatibility with various devices.

For optimal performance, ensure your device supports USB 3.2 Gen2 2x2 if you wish to achieve the maximum advertised speeds.

2.3 Initializing and Formatting (If Required)

In some cases, especially with new drives or specific operating systems, you may need to initialize and format the SSD before use. Refer to your operating system's documentation for detailed instructions on disk management.

3. OPERATING INSTRUCTIONS

Once connected and recognized, your Crucial X10 Pro SSD functions like any other external storage device.

3.1 Transferring Files

To transfer files, simply drag and drop them to and from the SSD's drive icon or folder in your file explorer/finder. The high read/write speeds enable quick transfers of large files.

Powerful performance for video professionals

Blaze through multi-cam timelines with read/write speeds up to 2,100/2,000MB/s¹



Figure 3: Connecting the SSD for high-performance tasks.

3.2 Working Directly from the Drive

The Crucial X10 Pro's high speeds allow you to work directly on files stored on the SSD, such as editing 4K/8K videos or large photo projects, without experiencing significant lag.

3.3 Password Protection

The SSD supports password protection for enhanced data security. Refer to the included software documentation (Mylio Photos+ and Acronis True Image) or Crucial's official website for instructions on enabling and managing password protection.

4. MAINTENANCE

The Crucial X10 Pro is built with durability in mind, requiring minimal maintenance.

4.1 Physical Durability

- **Water and Dust Resistance:** The drive is IP55 rated, meaning it is protected against dust ingress and low-pressure water jets from any direction. Avoid submerging the device in water.
- **Drop Protection:** Designed to withstand drops from up to 7.5 feet (2 meters).
- **Lanyard Loop:** Utilize the integrated lanyard loop to secure the drive and prevent accidental drops.

Durable design for all-weather shoots

Splash, dust and drop resistant



Figure 4: The SSD's durable design for various environments.

4.2 Cleaning

Wipe the exterior of the SSD with a soft, dry cloth. Avoid using harsh chemicals or abrasive materials.

5. TROUBLESHOOTING

If you encounter issues with your Crucial X10 Pro SSD, consider the following common solutions:

- **Drive Not Detected:**
 - Ensure the USB-C cable is securely connected to both the SSD and your device.

- Try a different USB-C port on your device.
- Test with a different compatible USB-C cable.
- Restart your computer or device.
- Check your operating system's Disk Management (Windows) or Disk Utility (Mac) to see if the drive is visible but uninitialized/unformatted.

• **Slow Transfer Speeds:**

- Ensure your device's USB-C port supports USB 3.2 Gen2 2x2 for maximum performance. Older USB standards will result in lower speeds.
- Close any unnecessary applications running in the background that might be consuming system resources.
- Verify the cable is the original included cable or another high-quality USB 3.2 Gen2 2x2 compatible cable.

• **Password Protection Issues:**

- Ensure you are using the correct password.
- Refer to the documentation for the password protection software you are using (e.g., Acronis True Image) for specific recovery or reset procedures.

6. SPECIFICATIONS

Feature	Detail
Hard Drive Type	Solid State Drive (SSD)
Capacity	2 TB
Model Number	CT2000X10PROSSD902
Read Speed (Max)	Up to 2100 MB/s
Write Speed (Max)	Up to 2000 MB/s
Interface	USB-C (USB 3.2 Gen2 2x2)
Connectivity Technology	USB
Water & Dust Resistance	IP55
Drop Protection	Up to 7.5 ft (2 meters)
Dimensions (LxWxH)	2.56 x 1.97 x 0.39 inches
Weight	1.48 ounces

Compatible
Devices

Camera, Gaming Console, Laptop, Tablet (Windows, Mac, iPad Pro, Chromebooks,
Android, Linux, PS4, PS5, Xbox)

7. WARRANTY AND SUPPORT

7.1 Limited Warranty

The Crucial X10 Pro Portable SSD comes with a limited 5-year warranty. Please retain your proof of purchase for warranty claims. For full terms and conditions, visit the official Crucial website.

7.2 Included Software

Your purchase includes redemption codes for three months of Mylio Photos+ and Acronis True Image. Register your external drive on the Crucial website to access these bonus software offers.

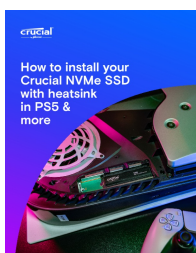
7.3 Customer Support

For further assistance, technical support, or to access additional resources, please visit the official Crucial support website or contact their customer service.

8. OFFICIAL PRODUCT VIDEO

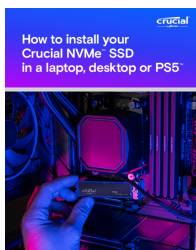
Video 1: An official overview of the Crucial X10 Pro Portable SSD, highlighting its features and benefits. This video is provided by Crucial.

Related Documents - CT2000X10PROSSD902



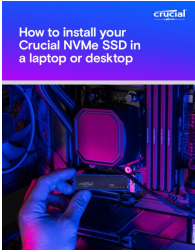



[Crucial NVMe SSD with Heatsink Installation Guide for PS5 and Desktops](#)

Step-by-step instructions from Crucial for installing their NVMe SSD with heatsink into a PlayStation 5 console or desktop computer, covering compatibility, preparation, and installation procedures.



[Crucial NVMe SSD Installation Guide for Laptops, Desktops, and PS5](#)

Comprehensive guide on how to install your Crucial NVMe SSD in laptops, desktops, and PlayStation 5 consoles. Includes steps for installation with and without heatsinks, cloning data, and using Crucial Storage Executive.

	<p>Crucial NVMe SSD Installation Guide: Laptop & Desktop</p> <p>Learn how to install your new Crucial NVMe SSD in a laptop or desktop with this comprehensive guide from Crucial by Micron. Follow step-by-step instructions to ensure compatibility, prepare your workspace, and successfully upgrade your computer's storage.</p>
	<p>Crucial m4 SSD Firmware Update Guide (Revision 070H)</p> <p>Step-by-step guide for updating the Crucial m4 2.5-inch SSD firmware to revision 070H using the Windows update utility. Includes instructions, troubleshooting, and release notes.</p>
	<p>How to Install a Crucial SSD in Your Computer</p> <p>A step-by-step guide on how to install a Crucial SSD in your computer, including preparation, data cloning, and physical installation. Learn how to improve your computer's speed and performance with a new SSD.</p>
	<p>How to Install a Crucial NVMe PCIe M.2 SSD in Your Computer</p> <p>A step-by-step guide on how to install a Crucial NVMe PCIe M.2 SSD into your computer, including preparation, installation, data cloning, and software setup for optimal performance.</p>