

manuals.plus /

- › [Bouncepad](#) /
- › [Bouncepad Go Adjustable Tablet Stand User Manual](#)

Bouncepad BP-GO-WHT

Bouncepad Go Adjustable Tablet Stand User Manual

Model: BP-GO-WHT

1. PRODUCT OVERVIEW

The Bouncepad Go is a versatile and adjustable tablet stand designed for both business and leisure use. It allows for effortless customization of your tablet's height and viewing angle, making it suitable for various applications such as point-of-sale (POS) systems, guest check-ins, or personal use. Its lightweight and compact design ensures portability, while the premium diecast aluminum and rubber construction provides durability and protects surfaces.



Image 1.1: The Bouncepad Go stand in white, holding an iPad, with a folded stand shown next to it.

Key Features:

- **Adjustable Viewing Angles:** Customize height and angle for optimal interaction.
- **Travel-Friendly Design:** Lightweight and compact for easy portability.
- **Durable Construction:** Made from premium diecast aluminum and rubber.
- **Vibrant Color Options:** Available in white, black, blue, and yellow.
- **Universal Compatibility:** Supports all tablet and iPad models, including iPad Mini, Air, and Pro.
- **Orientation Support:** Easily switch between landscape and portrait modes.

2. PACKAGE CONTENTS

Please verify that all items are present in the package:

- 1 x Bouncepad Go Adjustable Tablet Stand

3. SETUP INSTRUCTIONS

Follow these steps to set up your Bouncepad Go Adjustable Tablet Stand:

1. **Unpack the Stand:** Carefully remove the Bouncepad Go stand from its packaging.
2. **Place on a Stable Surface:** Position the stand on a flat, stable surface where you intend to use your tablet. Ensure the rubber feet on the base are making full contact with the surface to prevent slipping.
3. **Mount Your Tablet:** Gently place your tablet onto the stand's holding arms. The arms are designed to securely grip various tablet sizes. Ensure the tablet is centered and stable.



Image 3.1: Two Bouncepad Go stands in blue, demonstrating different adjustable angles for tablet viewing.

4. OPERATING INSTRUCTIONS

The Bouncepad Go stand offers flexibility in positioning your tablet:

- **Adjusting Angle:** The stand features a hinge mechanism that allows you to tilt your tablet to your desired viewing angle. Gently push or pull the tablet to adjust the angle. The stand is designed to hold its position firmly once set.
- **Changing Orientation:** To switch between landscape and portrait mode, simply rotate your tablet while it is mounted on the stand. The design accommodates both orientations seamlessly.

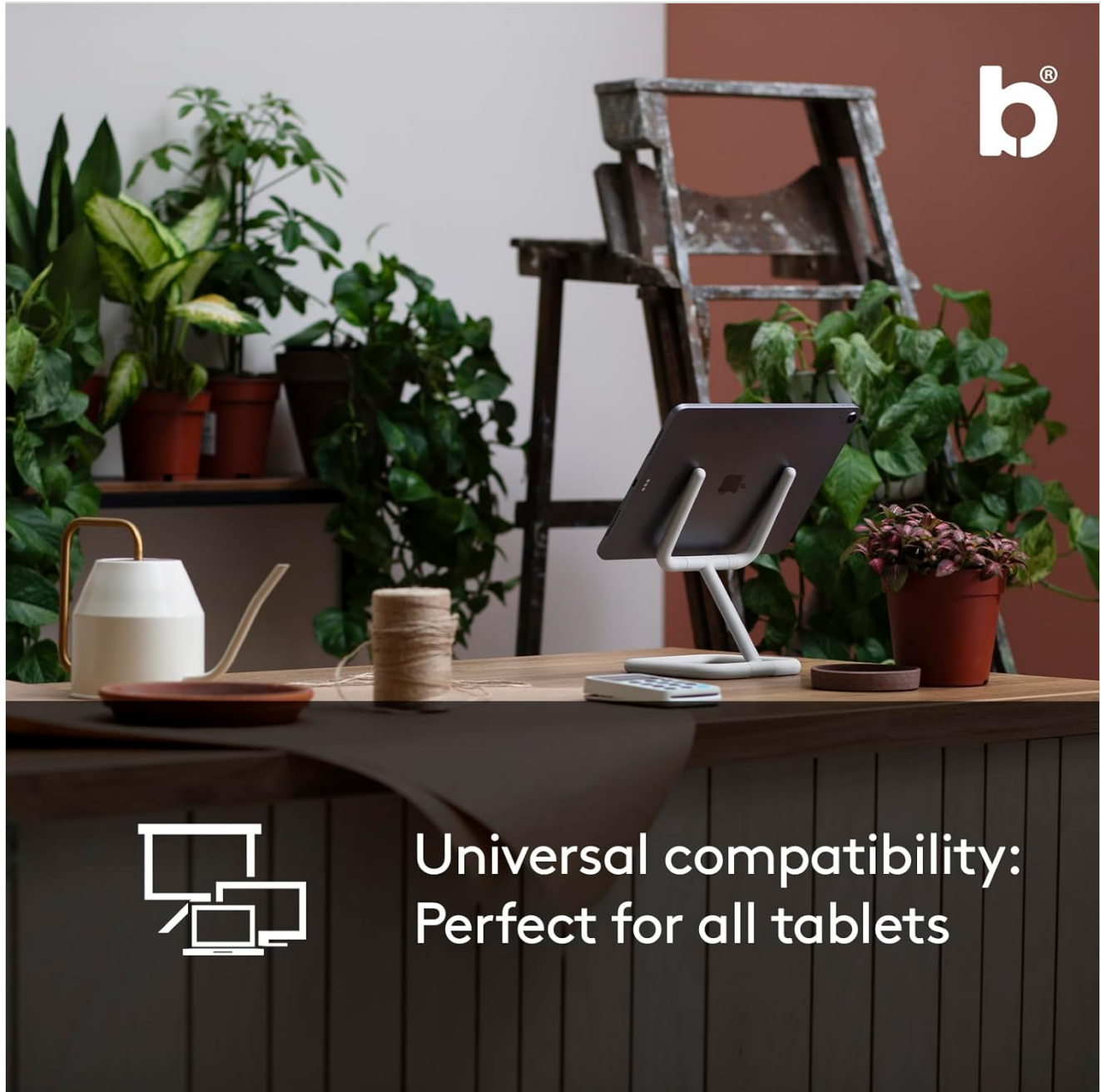


Image 4.1: A Bouncepad Go stand in black, holding a tablet in landscape orientation, illustrating its ability to support both landscape and portrait modes.

5. MAINTENANCE

To ensure the longevity and appearance of your Bouncepad Go stand:

- **Cleaning:** Wipe the stand with a soft, damp cloth. Avoid using abrasive cleaners or solvents, as these can damage the finish.
- **Storage:** When not in use, the stand can be folded for compact storage. Store in a dry place away from extreme temperatures.
- **Inspection:** Periodically check the stand for any signs of wear or damage. Ensure all components are secure.

6. TROUBLESHOOTING

If you encounter any issues with your Bouncepad Go stand, refer to the following:

- **Stand feels unstable:** Ensure the stand is placed on a completely flat and stable surface. Verify that the rubber feet are clean and making full contact. If the tablet feels loose, ensure it is properly seated in the holding arms.
- **Difficulty adjusting angle:** The hinge mechanism is designed to be firm to hold the tablet's position. Apply gentle, consistent pressure when adjusting. Do not force the mechanism.
- **Scratches on tablet/surface:** Ensure the rubber padding on the stand's arms and base are intact. These are designed to protect your tablet and surfaces. If damaged, contact support.

7. SPECIFICATIONS

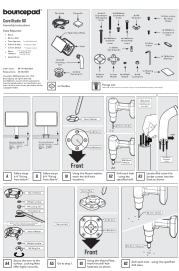
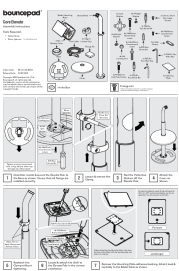
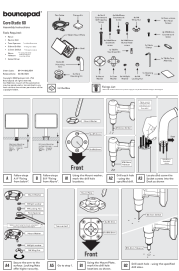
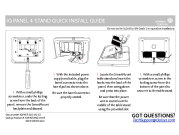
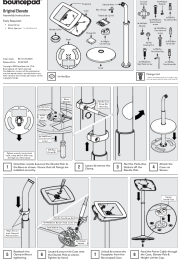
Feature	Detail
Product Dimensions	6.69 x 6.3 x 1.38 inches
Item Weight	10.6 ounces
Model Number	BP-GO-WHT
Brand	Bouncepad
Color	White (other colors available)
Form Factor	Tower
Compatible Devices	All Samsung Tablets, Apple iPad 9.7, 10.2 and 10.9 (all generations), Apple iPad Mini and Air (all generations), Apple iPad Pro 11.0 (all generations), Apple iPad Pro 12.9 (all generations)
Manufacturer	Bouncepad
Date First Available	June 30, 2023

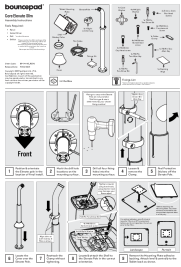
8. WARRANTY AND SUPPORT

For warranty information or technical support, please refer to the official Bouncepad website or contact their customer service directly. Keep your purchase receipt as proof of purchase.

© 2023 Bouncepad. All rights reserved.

Related Documents - BP-GO-WHT

	<p>Bouncepad Core Static 60 Assembly Instructions - Secure Tablet Mounting</p> <p>Comprehensive assembly instructions for the Bouncepad Core Static 60 tablet stand, detailing tools, parts, and step-by-step guidance for secure installation on various surfaces.</p>
	<p>Bouncepad Core Elevate Assembly Instructions Secure Tablet Mounting</p> <p>Step-by-step guide to assembling the Bouncepad Core Elevate, a versatile and secure tablet and iPad mounting solution. Includes parts list, tools required, and installation tips.</p>
	<p>Bouncepad Core Static 60 Desk Mounted Tablet Holder Assembly Guide</p> <p>Detailed assembly guide for the Bouncepad Core Static 60 desk-mounted tablet holder. Learn how to install your tablet holder with clear, step-by-step instructions, including tools required, parts list, and mounting options for fixing from below or above.</p>
	<p>IQ Panel 4 Stand Quick Install Guide</p> <p>A quick installation guide for the Qolsys IQ Panel 4 Stand, detailing how to attach the stand to the panel using a Phillips screwdriver and connect the power supply.</p>
	<p>Bouncepad Original Elevate Assembly Instructions</p> <p>Comprehensive, step-by-step assembly guide for the Bouncepad Original Elevate tablet stand, detailing parts, tools, and installation procedures for a secure and functional setup.</p>



[Bouncepad Core Elevate Slim Assembly Instructions](#)

Step-by-step assembly instructions for the Bouncepad Core Elevate Slim tablet and iPad mount.