

[Manuals.plus](#) /

> [Espelho](#) /

> Espelho Automatic Pet Feeder User Manual

## Espelho DU5L-VH-JP

# Espelho Automatic Pet Feeder

Model: DU5L-VH-JP

## INTRODUCTION

---

Thank you for choosing the Espelho Automatic Pet Feeder. This device is designed to provide convenient and consistent feeding for your pets, whether you are at home or away. With its smart features, including WiFi connectivity, remote control via smartphone, voice recording, and precise portion control, it helps maintain a healthy feeding schedule for your beloved cats and dogs. This manual provides detailed instructions for setup, operation, maintenance, and troubleshooting to ensure optimal performance and a seamless experience.

## PRODUCT OVERVIEW

---



The Espelho Automatic Pet Feeder, shown with its dual stainless steel bowls and a smartphone displaying a cat, indicating remote monitoring capabilities.



A view of the Espelho Automatic Pet Feeder, highlighting its compact design and the transparent food reservoir.

The Espelho Automatic Pet Feeder features a 5-liter capacity food tank, suitable for multi-pet households. It comes with two stainless steel trays for hygienic feeding. The device supports remote operation via a dedicated smartphone app, allowing you to manage feeding schedules and dispense food from anywhere. It also includes a 10-second voice recording function to call your pet at meal times.

## SETUP

---

### 1. Unboxing and Components

Carefully remove all components from the packaging. Ensure you have the main feeder unit, two stainless steel bowls, the bowl holder, adjustable feet (large and small), a USB-C power adapter, and a desiccant bag.

### 2. Power Supply

The feeder supports 2-way power: via the included USB-C adapter or 3 D-cell batteries (not included) for emergency backup. It is recommended to use both for uninterrupted operation.

- **USB-C Adapter:** Connect the USB-C cable to the port on the back of the feeder and plug the adapter into a wall outlet.
- **Battery Installation:** Open the battery compartment at the bottom of the unit and insert 3 D-cell batteries, ensuring correct polarity.



### 3. App Installation and Connection

Download the dedicated Espelho app from the App Store (iOS) or Google Play Store (Android). Follow the in-app instructions to connect the feeder to your home WiFi network. Ensure your smartphone is connected to a 2.4GHz WiFi network during the initial setup.

### 4. Food Tank Filling

Open the top lid of the feeder. Pour dry pet food into the transparent tank. The 5L capacity can hold enough food for approximately 26 days for a 2kg cat or 6 days for a 10kg dog (based on calculations for two pets).





## 透明化のフードタンク エサの残量を簡単にチェック

The transparent food tank allows for easy monitoring of the remaining food level.

### 5. Tray Height Adjustment

The feeder comes with two types of adjustable feet (large and small) to customize the height of the feeding tray. The tray height can be adjusted in 3 stages from 4.8cm to 9.8cm to suit your pet's growth and comfort.

## ペットにも健康的な食事を 給餌時間を科学化、さらに個性化する

1日最大8食まで      1食につき最大20ポーション数の  
ペットフードが給餌できます

1/8  
1ポーションにつき  
8±2グラム

A photograph of a grey kitten standing on a light-colored wooden floor, eating from a white automatic pet feeder. The feeder has a black top section with a digital display and a white base with two circular food bowls. The background shows a modern kitchen with white cabinets and a washing machine.

The feeder supports healthy eating habits by allowing precise portion control and adjustable height for growing pets.

## OPERATING INSTRUCTIONS

### 1. Timed Feeding Schedule

Using the Espelho app, you can set up a customized feeding schedule for your pet. You can program up to 8 meals per day, specifying the day of the week, time, and feeding amount for each meal. The feeding amount can be set from 10g to 200g in 20 stages (10g per stage).




### 2. Manual Feeding

For immediate feeding, you can dispense food manually through the app or by pressing the manual feed button on the device.

### 3. Voice Recording

The feeder allows you to record a 10-second voice message that will play at each scheduled mealtime. This helps to call your pet to eat and makes them feel more comfortable.

## 留守中でもあなたの声が届く

 最大10秒間の録音再生



The voice recording feature allows you to call your pet to their meal, even when you are away.

## 録音でペットを 呼び出し



Record a personalized message to play at feeding times, making mealtime more engaging for your pet.

### 4. Anti-Clogging Design

The feeder features a patented anti-clogging design and a 45-degree inclined feeding outlet to prevent food from getting stuck. It is suitable for dry pet food kibble ranging from 2mm to 13mm in size.

# 詰まり防止設計

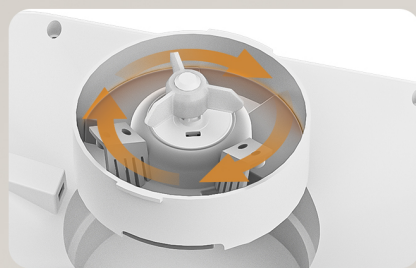
外出時の食べ詰まりの心配もありません



The feeder's anti-clogging design ensures smooth food dispensing, preventing blockages.



45°傾斜の給餌出口



特許を取った詰まり防止デザイン

Detailed view of the 45-degree inclined feeding outlet and the patented anti-clogging mechanism.

## エサが詰まることはありません

2~13mm以下のあらゆる種類の粒に適しています

ご使用するエサのサイズ

2 mm

8 mm

10 mm

A  
13 mm  
>13 mm

ご使用するエサの種類



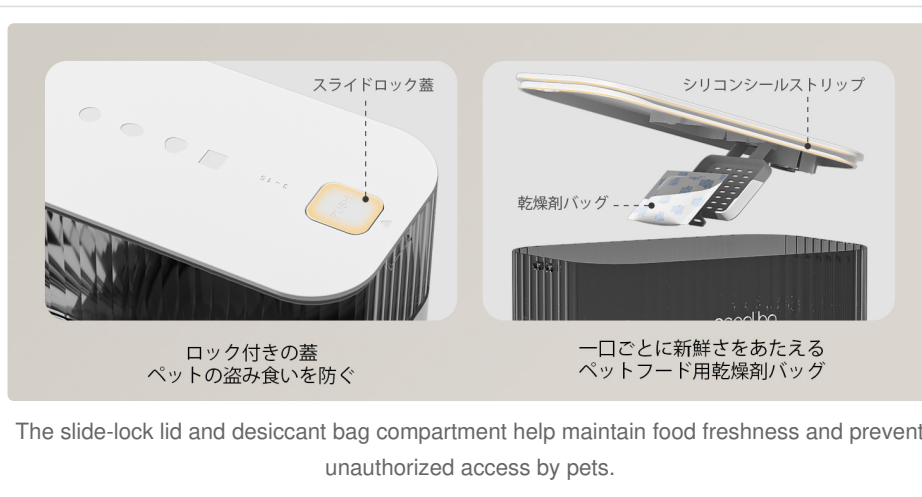
注意事項: 2~13mmの範囲を超える粒は使用しないでください。フィーダー内で詰まり、ペットに餌を与えることができない可能性があります。



The feeder is compatible with various types of dry pet food, provided the kibble size is between 2mm and 13mm.

## 5. Anti-Theft Lid

The feeder is equipped with a slide-lock lid and a silicone seal strip to keep food fresh and prevent pets from accessing the food outside of scheduled feeding times.



## MAINTENANCE

### 1. Cleaning Instructions

Regular cleaning of the feeder is essential for your pet's health and hygiene. The food tank, stainless steel bowls, and bowl holder are removable for easy cleaning.

- Disconnect the power before cleaning.
- Remove the food tank and bowls. Wash them with mild soap and water. Rinse thoroughly and dry completely before reassembling.
- Wipe the main unit with a damp cloth. Do not immerse the main unit in water.

### 2. Desiccant Bag Replacement

The feeder includes a desiccant bag to keep the food fresh. Replace the desiccant bag every 1-2 months, or as needed, to ensure optimal freshness.

## TROUBLESHOOTING

Problem	Possible Cause	Solution
Feeder not connecting to app/WiFi	Incorrect WiFi password; 5GHz WiFi network; QR code not scanning; device not found.	Ensure correct 2.4GHz WiFi network and password. Try rescanning the QR code. Reset the device and attempt connection again. Move feeder closer to router.
Food not dispensing	Food clogging; low food level; dispenser mechanism jammed; power issue.	Check food size (must be 2-13mm). Refill food tank. Clear any obstructions in the dispenser. Ensure stable power supply (check adapter and batteries).
Frequent device resets/disconnections	Unstable WiFi connection; app issues.	Ensure strong and stable WiFi signal. Update app to the latest version. Re-pair the device if necessary.
Voice recording not playing	Recording error; volume too low.	Re-record the voice message. Check app settings for volume control.

## SPECIFICATIONS

Feature	Detail
Model Number	DU5L-VH-JP
Brand	Espelho
Capacity	5 Liters
Connectivity	WiFi (2.4GHz)
Control Method	Smartphone App (iOS/Android)
Feeding Schedule	Up to 8 meals per day
Portion Control	10g to 200g per meal (20 stages)
Voice Recording	10 seconds
Power Supply	USB-C Adapter (included), 3 x D-cell Batteries (not included)
Tray Material	Stainless Steel
Kibble Size Compatibility	2mm - 13mm

Feature	Detail
Adjustable Tray Height	4.8cm - 9.8cm (3 stages)
Target Species	Cat, Dog

## WARRANTY AND SUPPORT

---

The Espelho Automatic Pet Feeder comes with a 1-year warranty from the date of purchase. This warranty covers manufacturing defects and malfunctions under normal use. Please retain your proof of purchase for warranty claims.

For technical support, troubleshooting assistance, or warranty inquiries, please contact Espelho customer service through the contact information provided in the product packaging or on the official Espelho website. When contacting support, please have your model number (DU5L-VH-JP) and a description of the issue ready.